



Toshiba Portege R835-P56X HDMI Port Replacement

Following this guide will assist you in replacing the HDMI port.

Written By: Anay Sanchez



INTRODUCTION

With this guide, you will be able to replace the HDMI port on the Toshiba Portege R835-P56X. Before you begin this process, refer back to the Battery Replacement Guide in order to take out the battery.



TOOLS:

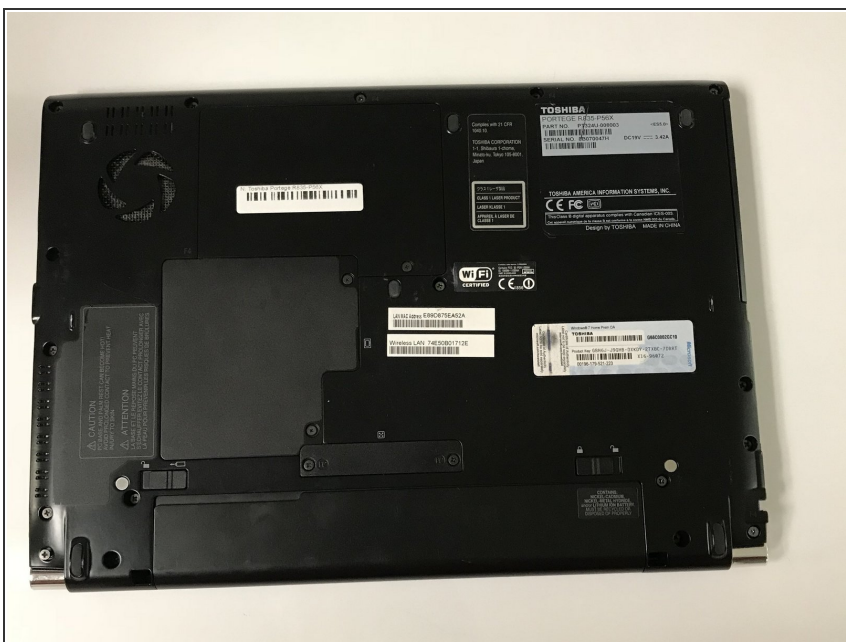
- [Phillips #0 Screwdriver](#) (1)
- [iFixit Opening Tools](#) (1)



PARTS:

- [HDMI port](#) (1)

Step 1 — HDMI Port



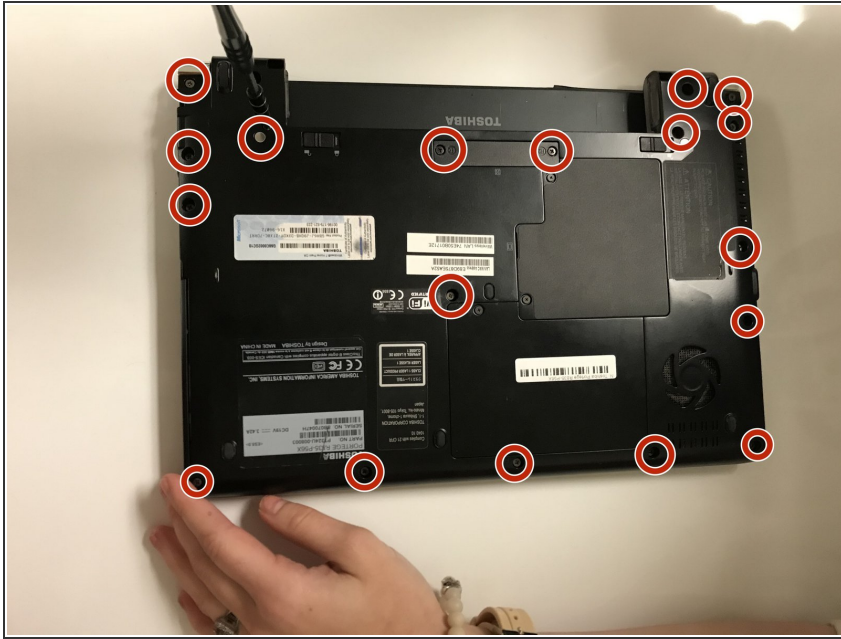
- Place the laptop with the battery facing up

Step 2



⚠ Take out the battery to avoid getting electrocuted.

Step 3



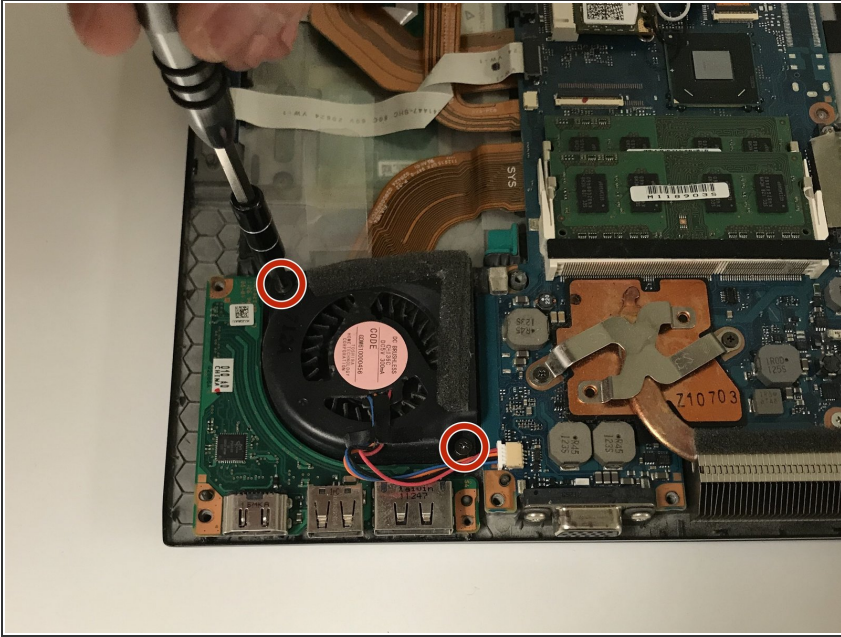
- Use the screwdriver to unscrew 18 screws.
- Place them to the side for the reassembly process.

Step 4



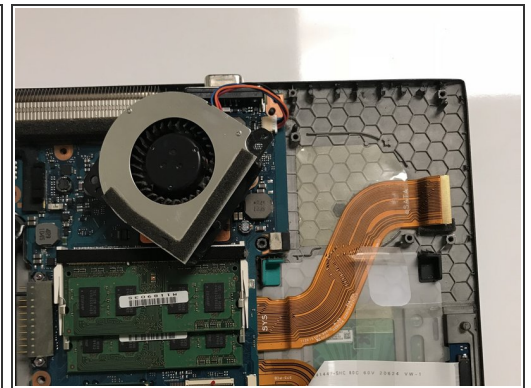
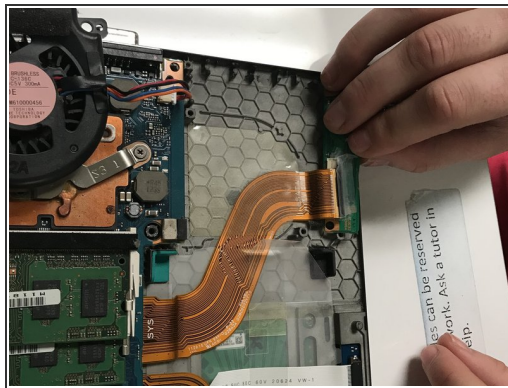
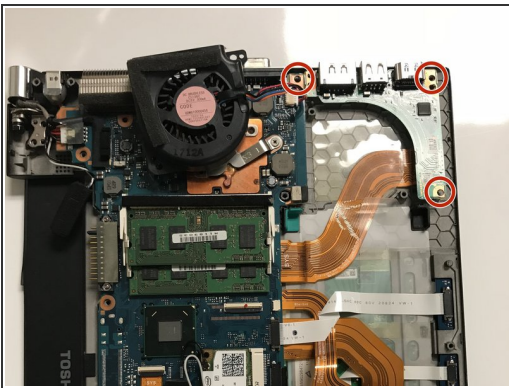
- Use the plastic tool to help pry the back off of the laptop

Step 5



- Remove the fan by unscrewing the screws with the screwdriver
- Place the screws aside for reassembly process.

Step 6



- Locate the HDMI port.
- Unscrew the screws using the screwdriver.
- Pull the HDMI port off by gently holding the orange band and pulling the HDMI port at the same time.

To reassemble your device, follow these instructions in reverse order.