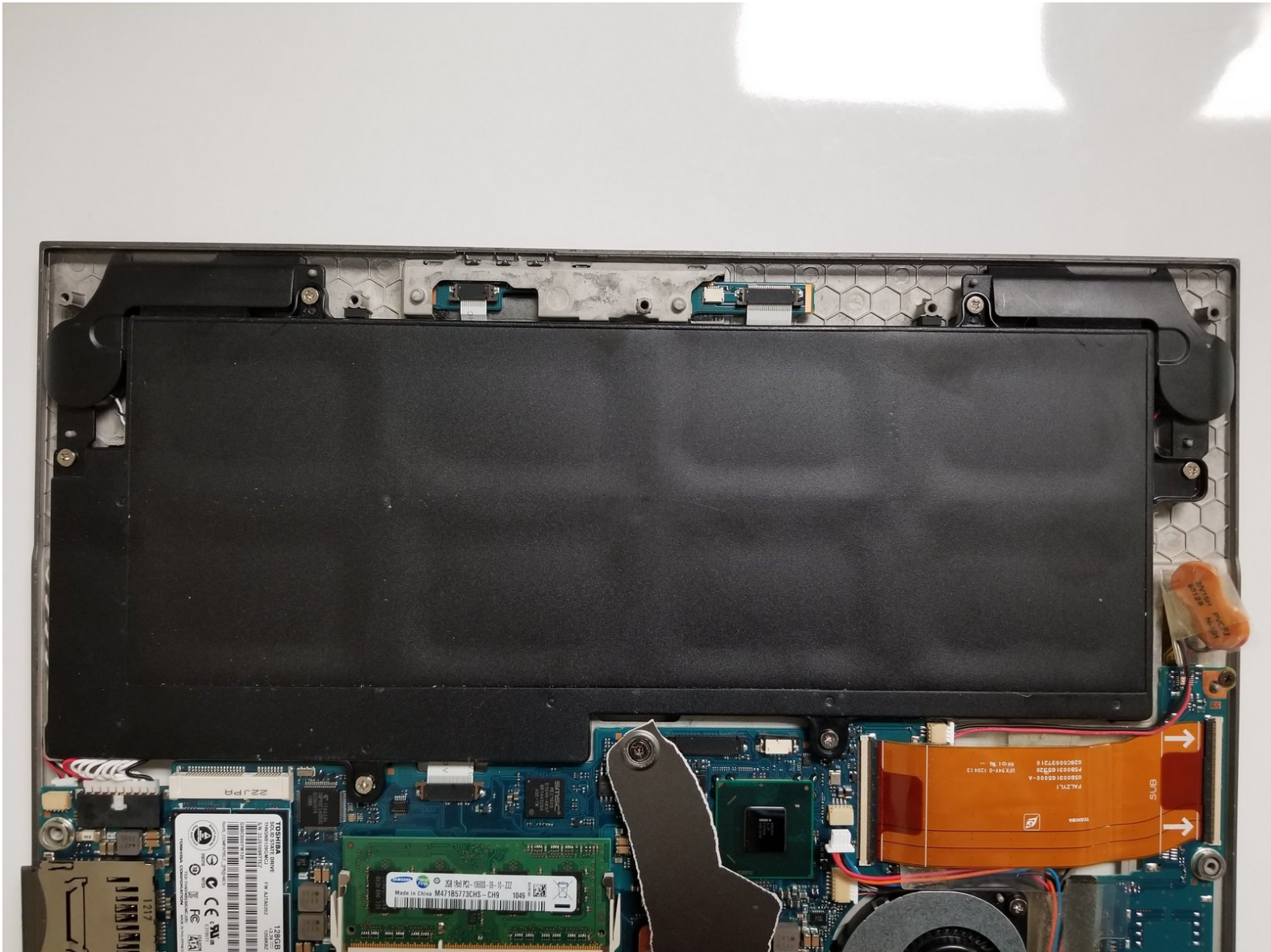




Toshiba Portege Z835-P330 Battery Replacement

This guide will help you replace the battery in your device.

Written By: Dominic Whiting



INTRODUCTION

This guide will teach you how to replace the battery of the Toshiba Portege Z835-P330.



TOOLS:

- [Phillips #1 Screwdriver](#) (1)
- [Phillips #2 Screwdriver](#) (1)
- [TR7 Torx Security Screwdriver](#) (1)



PARTS:

- [Toshiba Portege Z835-P330 Battery](#) (1)

Step 1 — Battery



- Remove the thirteen 1.4mm screws on back of device using a Phillips #2 screwdriver.

Step 2



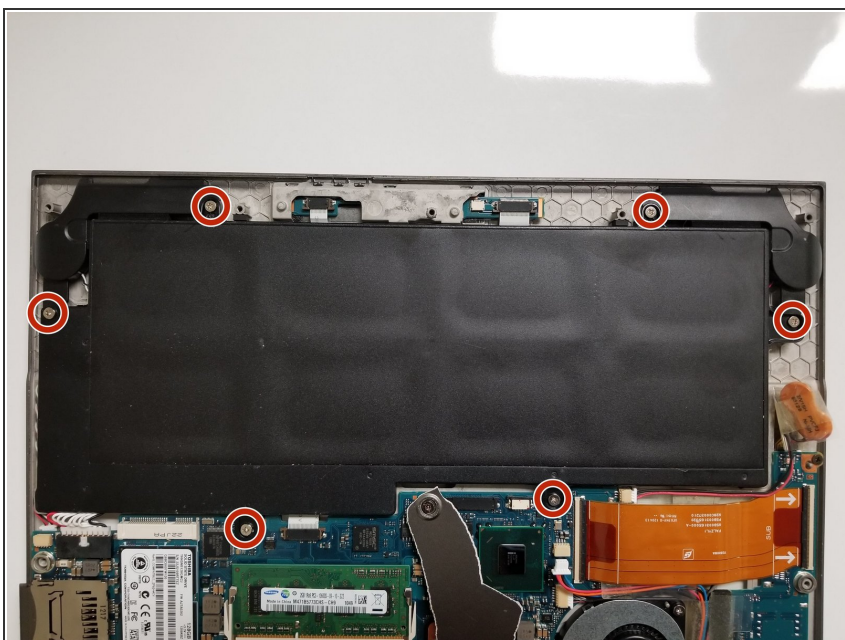
- Locate hidden screw found in the middle of back hardcover.
- *i* Found under rubber covering shown in picture.
- Remove the single Torx Security screw using a TR7 screwdriver.

Step 3



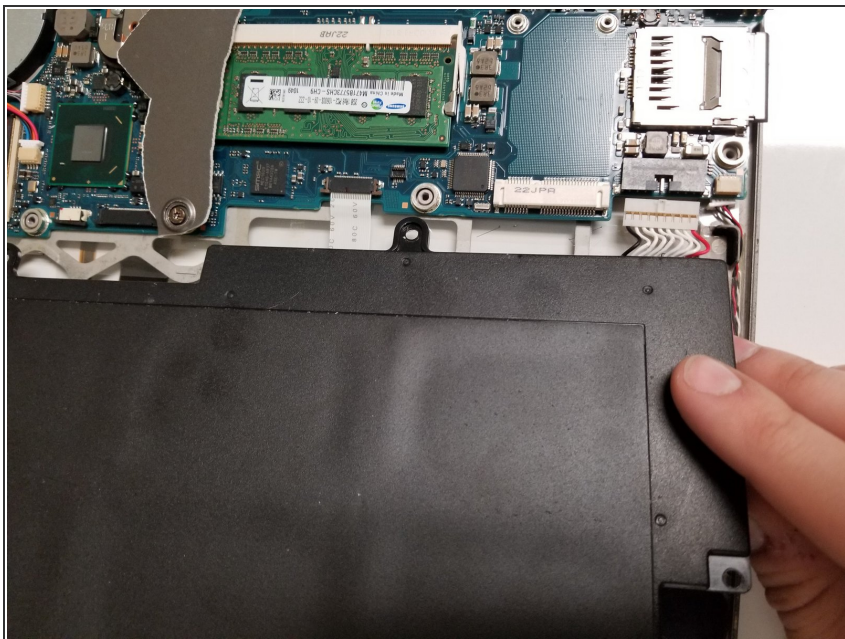
- Peel off hardcover to expose interior of device.
- ✦ Force may be required but hardcover should detach smoothly.

Step 4



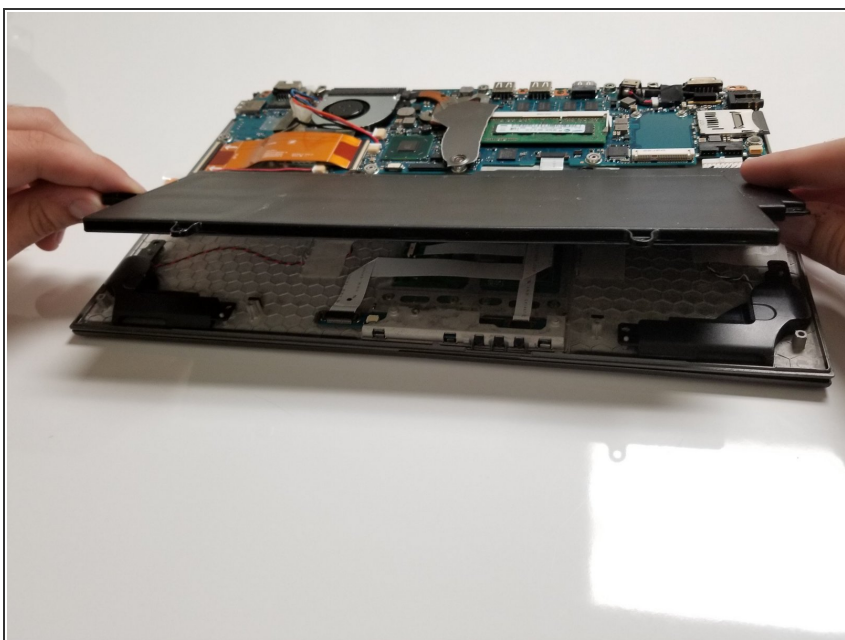
- Remove the six 1 mm screws using a Phillips #1 screwdriver.

Step 5



- Remove the white plug connected to the battery by gently pulling it out of the socket.
- ⓘ Plug should easily detach without force.

Step 6



- Lift battery up by its sides, and it should easily come off.

To reassemble your device, follow these instructions in reverse order.