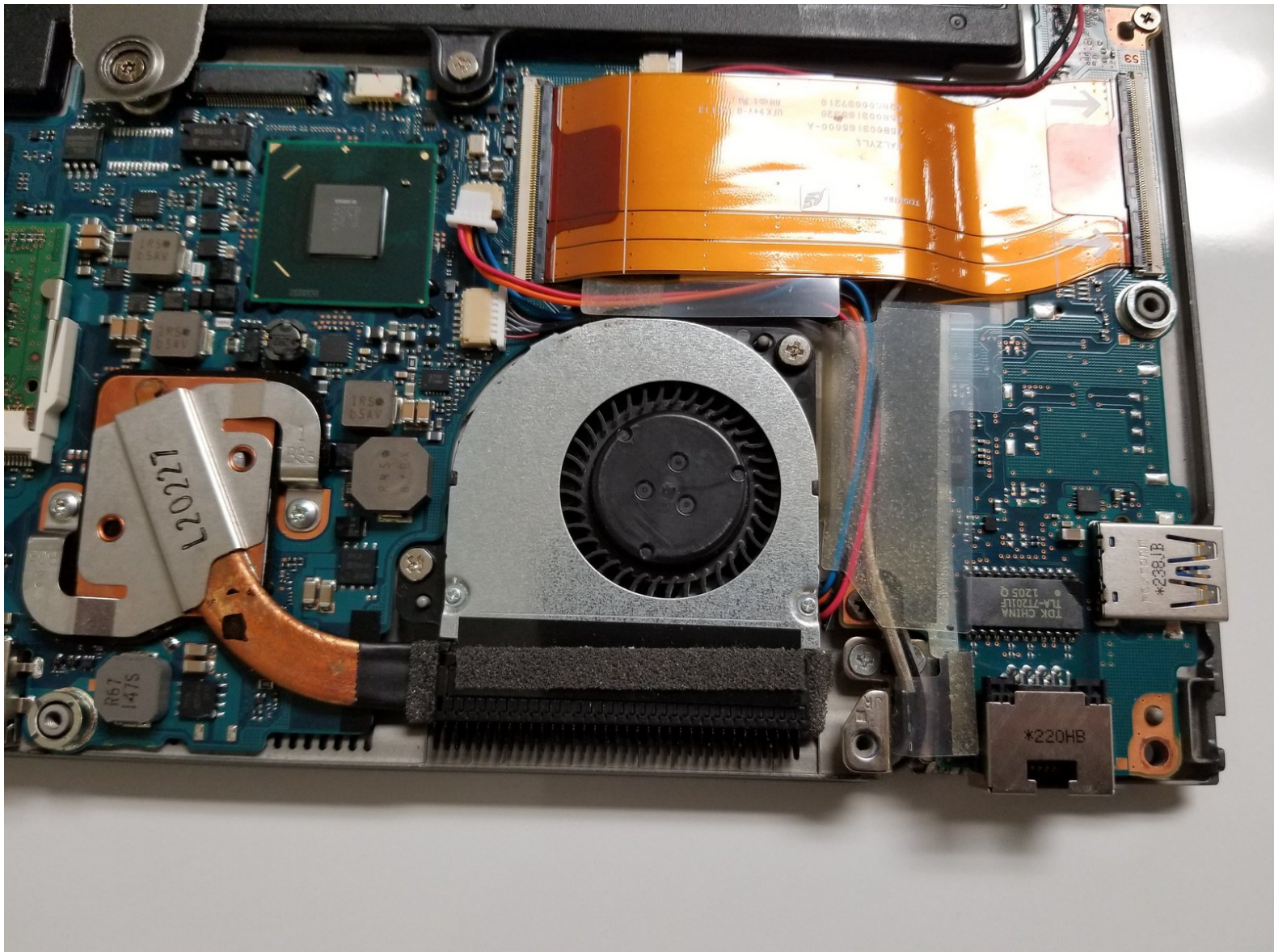




# Toshiba Portege Z835-P330 Internal Cooling Fan Replacement

This guide will help you replace the Internal Cool Fan in your device.

Written By: Dominic Whiting





## TOOLS:

- [Metal Spudger Set](#) (1)
- [Phillips #1 Screwdriver](#) (1)
- [Phillips #2 Screwdriver](#) (1)

## Step 1 — Internal Cooling Fan



- Remove the thirteen 1.4mm screws using a Phillips #2 screwdriver.

## Step 2



- Locate hidden screw found in the middle of back hardcover.
- ⓘ Here you will find a proprietary Japanese Screw Head.
- ⚠ Remove screw by using tool not provided by iFixit or by using the methods found [here](#).

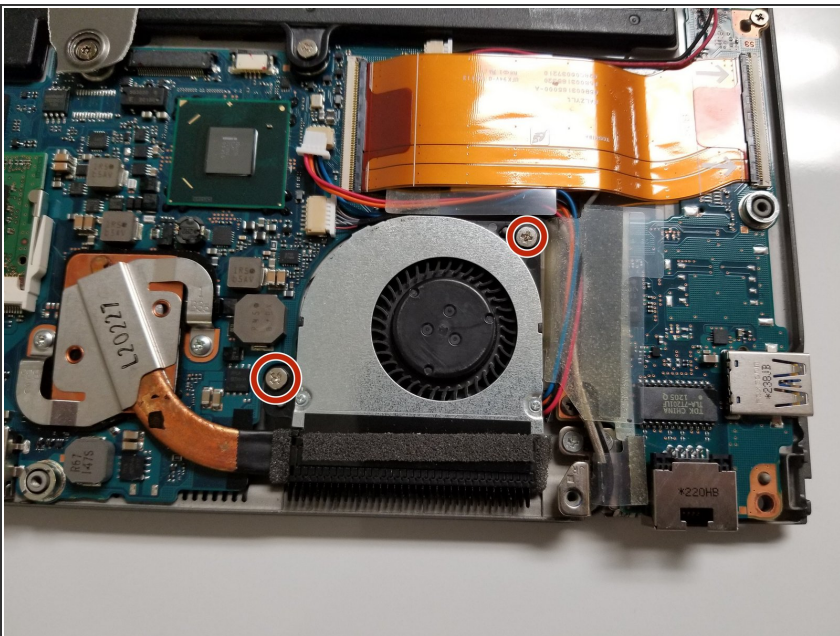


### Step 3



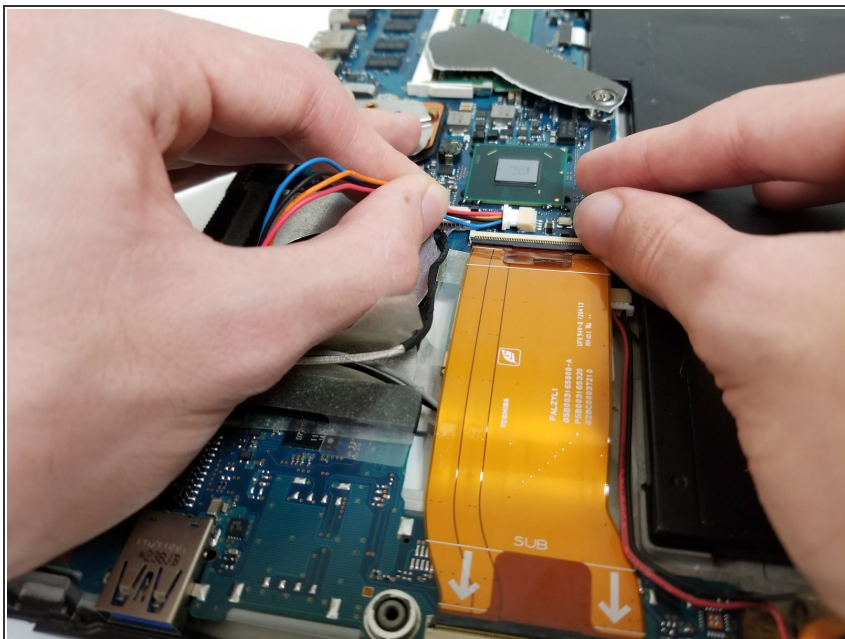
- Peel off hard cover to expose interior of device

### Step 4



- Remove the two 1 mm screws using a Phillips #2 screwdriver.

## Step 5



- Unplug the internal cooling fan by tugging gently on the wire attached to the device's motherboard

## Step 6



- Lift the internal cooling fan to remove the fan from the device

To reassemble your device, follow these instructions in reverse order.