



Toshiba Portege Z835-P330 Keyboard Replacement

This guide will help you in replacing the keyboard of this device.

Written By: Dominic Whiting



INTRODUCTION

This repair guide will give you the steps to follow to replace the keyboard of your device.



TOOLS:

- [iFixit Opening Tools](#) (1)
- [Phillips #1 Screwdriver](#) (1)
- [Phillips #2 Screwdriver](#) (1)



PARTS:

- [Toshiba Portege Z835-P330 Keyboard](#) (1)

Step 1 — Keyboard



- Remove the thirteen 1.4mm screws using a Phillips #2 screwdriver

Step 2



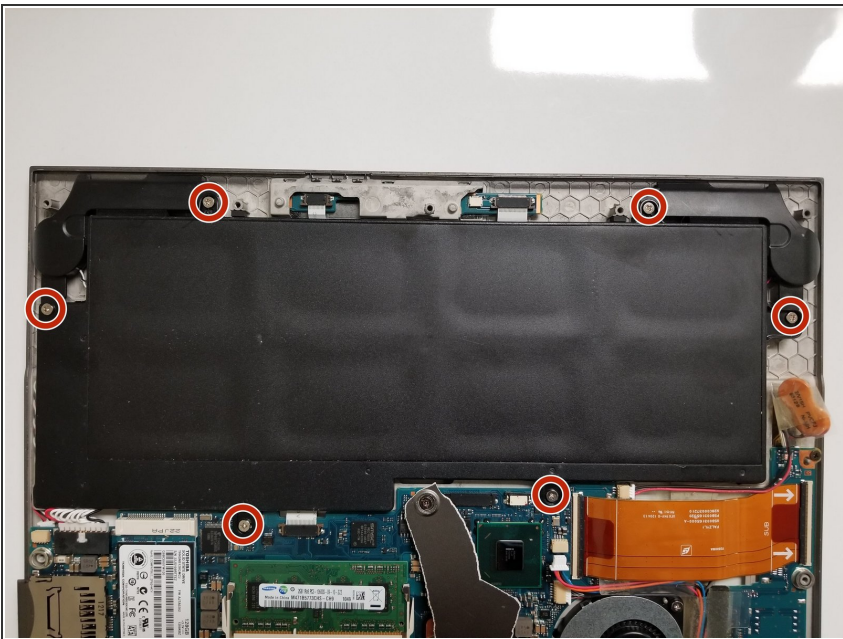
- Locate the hidden screw found in the middle of the back hard cover.
 - i The hidden screw is found under the rubber cover shown in picture.
- Here you will find a proprietary Japanese screw head.
 - i Remove the screw with your own tool (not provided by iFixit) or by using the methods found [here](#).

Step 3



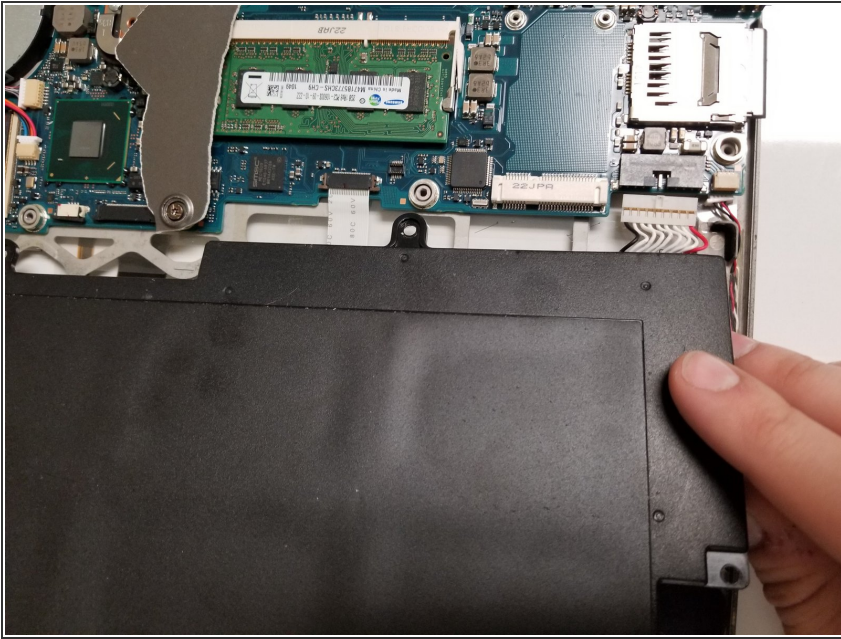
- Peel off the hardcover on the back of the device to expose the interior of the device.
- ☑ Force may be required, but the hardcover should detach smoothly.

Step 4



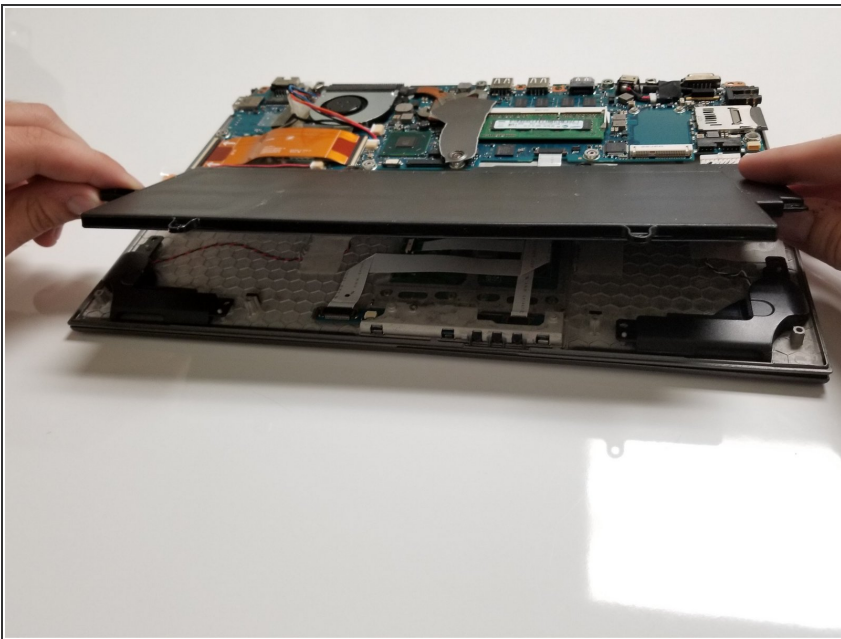
- Remove the six screws using a Phillips #1 screwdriver.

Step 5



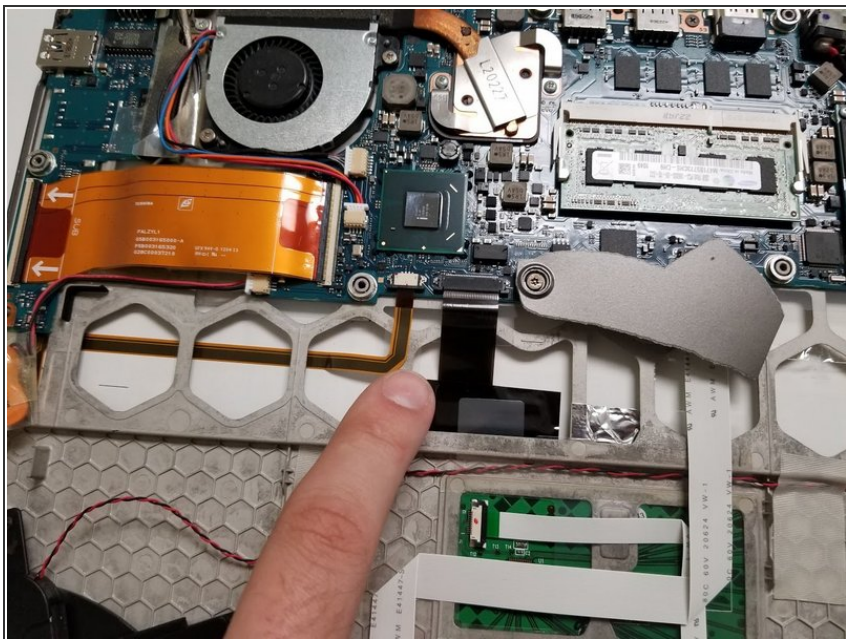
- Remove the white [Bundled Cable Connector](#) by gently pulling it out of the socket. Follow the guide [here](#).
- ⓘ Plug should easily detach with little force.

Step 6



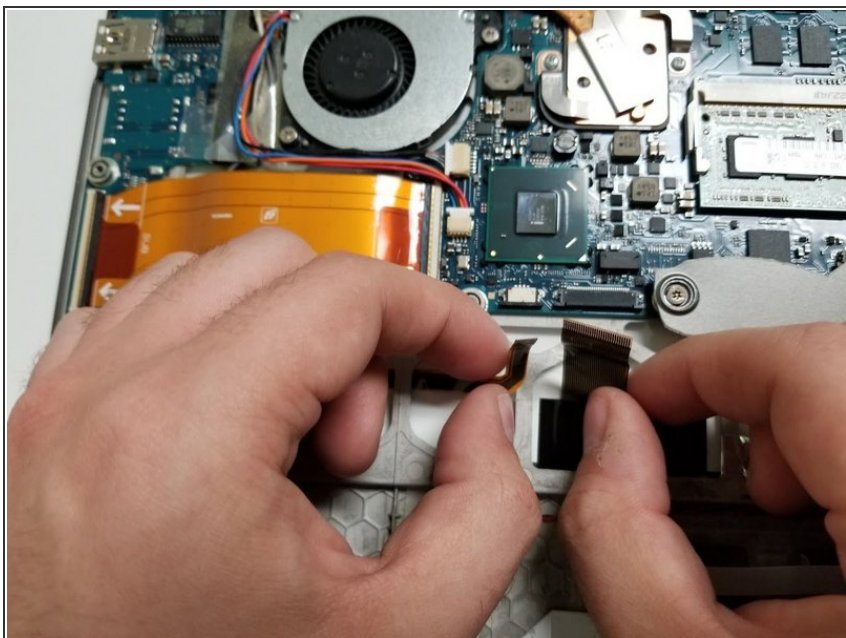
- Lift the battery up by its sides. The battery should easily come off.

Step 7



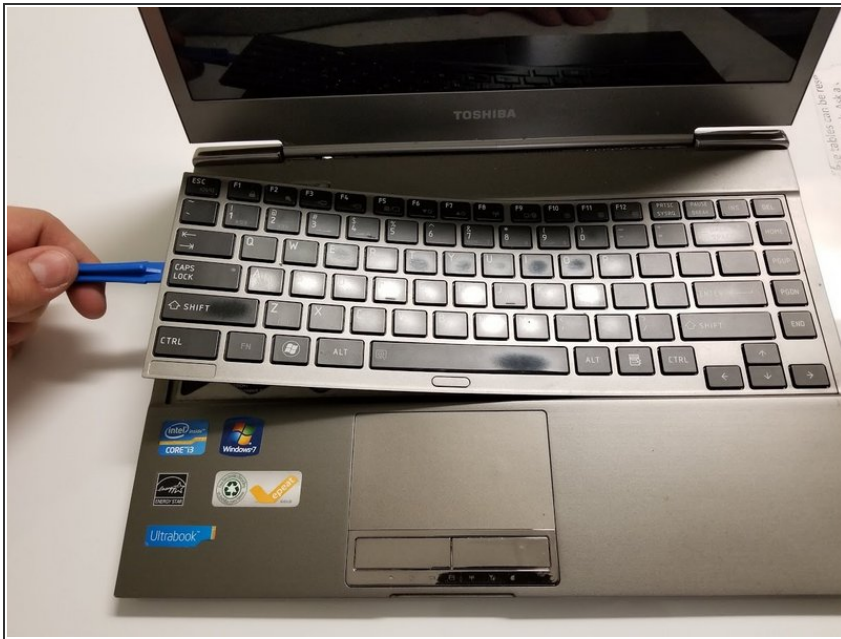
- Locate two [ZIF \(Zero Insert Force\)](#) connector cables underneath the battery.

Step 8



- Remove the two cables by following the direction [here](#).
- ⓘ The cables should come off easily.

Step 9



- Flip the device over to access the keyboard.
- Insert the [Opening Tool](#) into the crevice on one side of keyboard frame.
- Pry off the keyboard using the tool.

Step 10



- Pull off the rest of the keyboard with your hands when you're able to easily grab underneath the keyboard.
- ⓘ The keyboard will be taped underneath but will easily detach.

To reassemble your device, follow these instructions in reverse order.