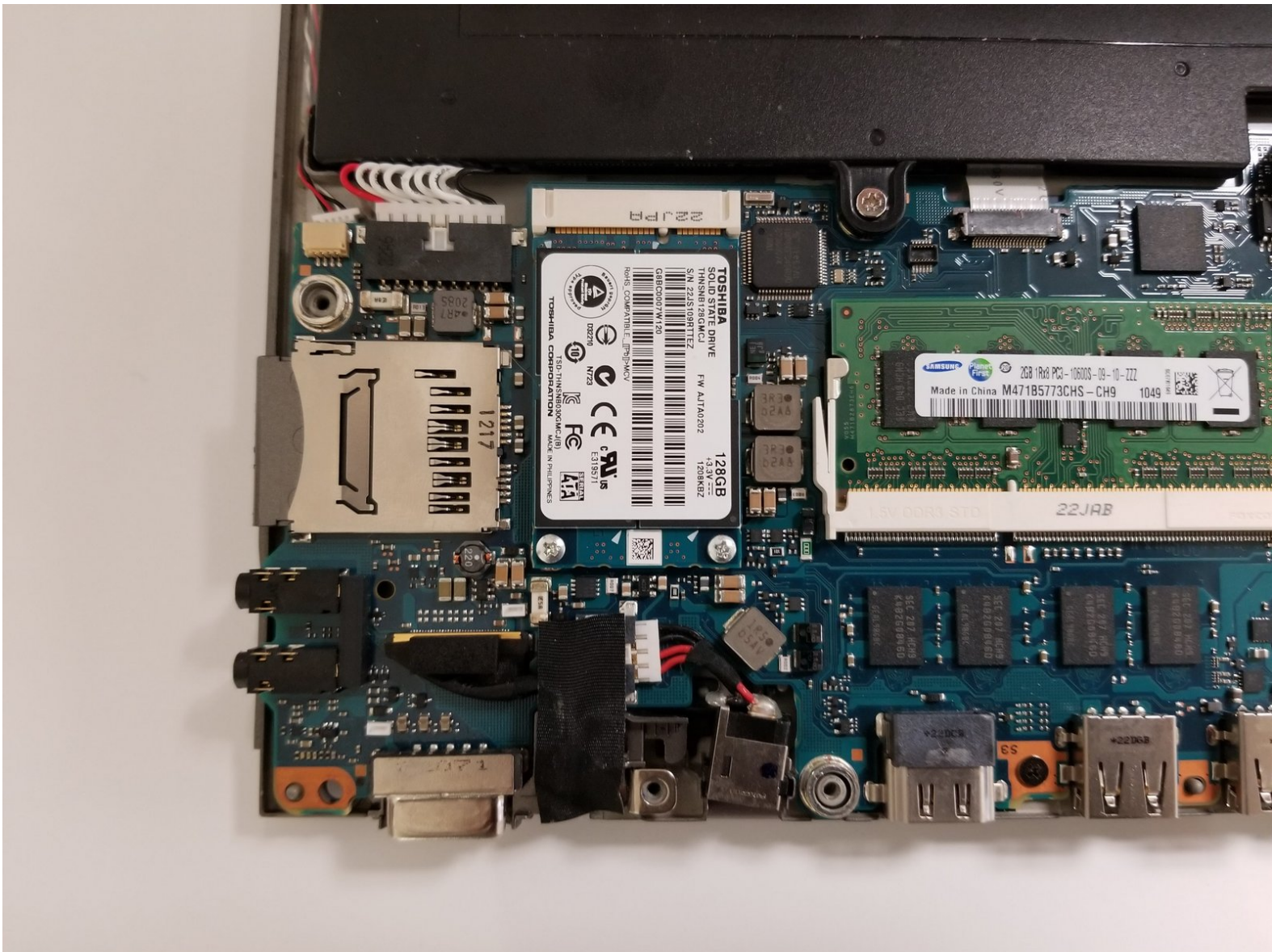




Toshiba Portege Z835-P330 Solid-State Drive Replacement

This guide will help you replace the solid-state drive in your laptop.

Written By: Dominic Whiting





TOOLS:

- [Phillips #1 Screwdriver](#) (1)
- [Phillips #2 Screwdriver](#) (1)
- [TR7 Torx Security Screwdriver](#) (1)

Step 1 — Solid-State Drive



- Remove the thirteen 1.4mm screws using a Phillips #2 screwdriver.

Step 2



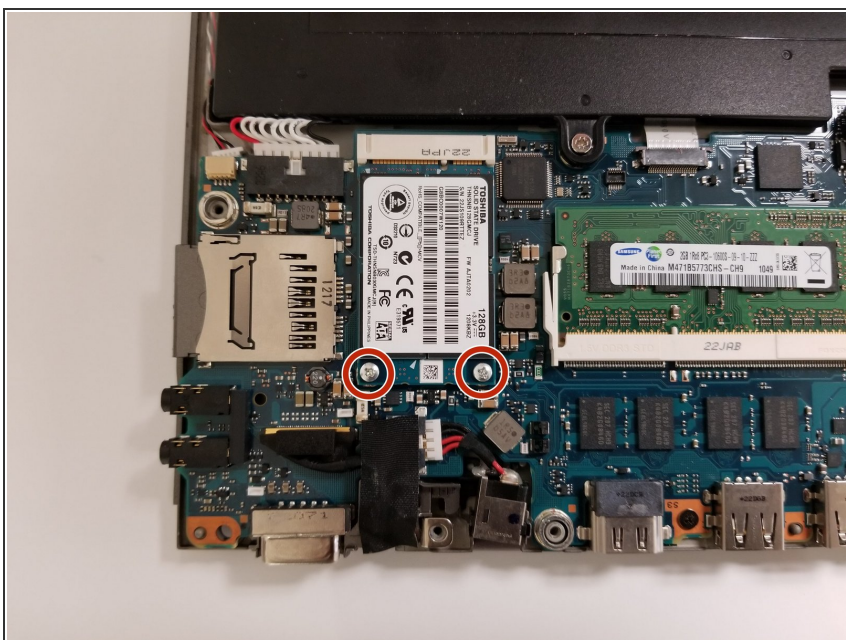
- Locate hidden screw found in the middle of back hardcover.
 - ⓘ Found under rubber covering shown in picture.
- Remove the single Torx Security screw using a TR7 screwdriver.

Step 3



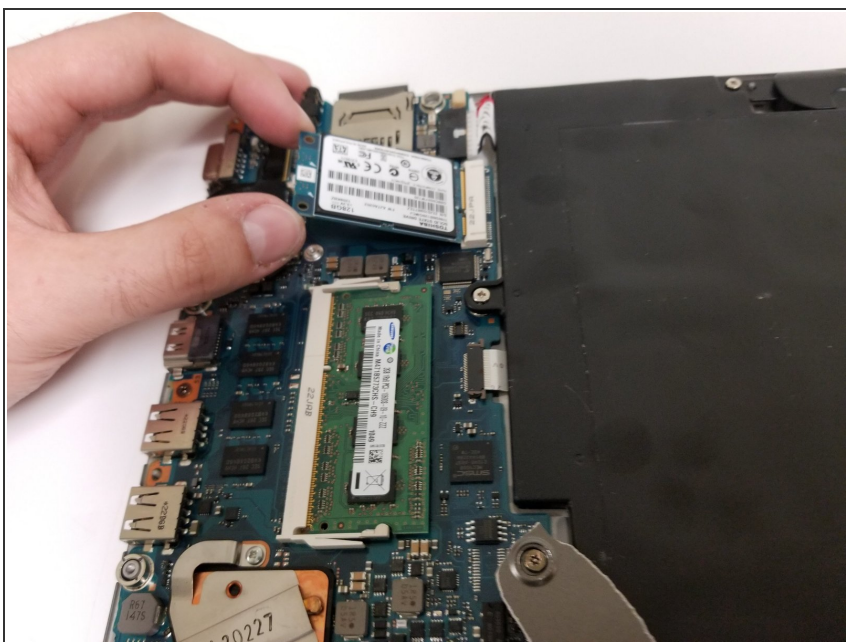
- Peel off hard cover to expose interior of device.

Step 4



- Find the solid-state drive located below the battery, and next to the RAM.
- Unscrew the two 1mm screws located at the top of the solid-state drive with a Phillips #1 screwdriver.

Step 5



- Pull the solid-state drive from its socket
- ⓘ The solid-state drive should automatically pop-up from its housing once the screws are removed.

To reassemble your device, follow these instructions in reverse order.