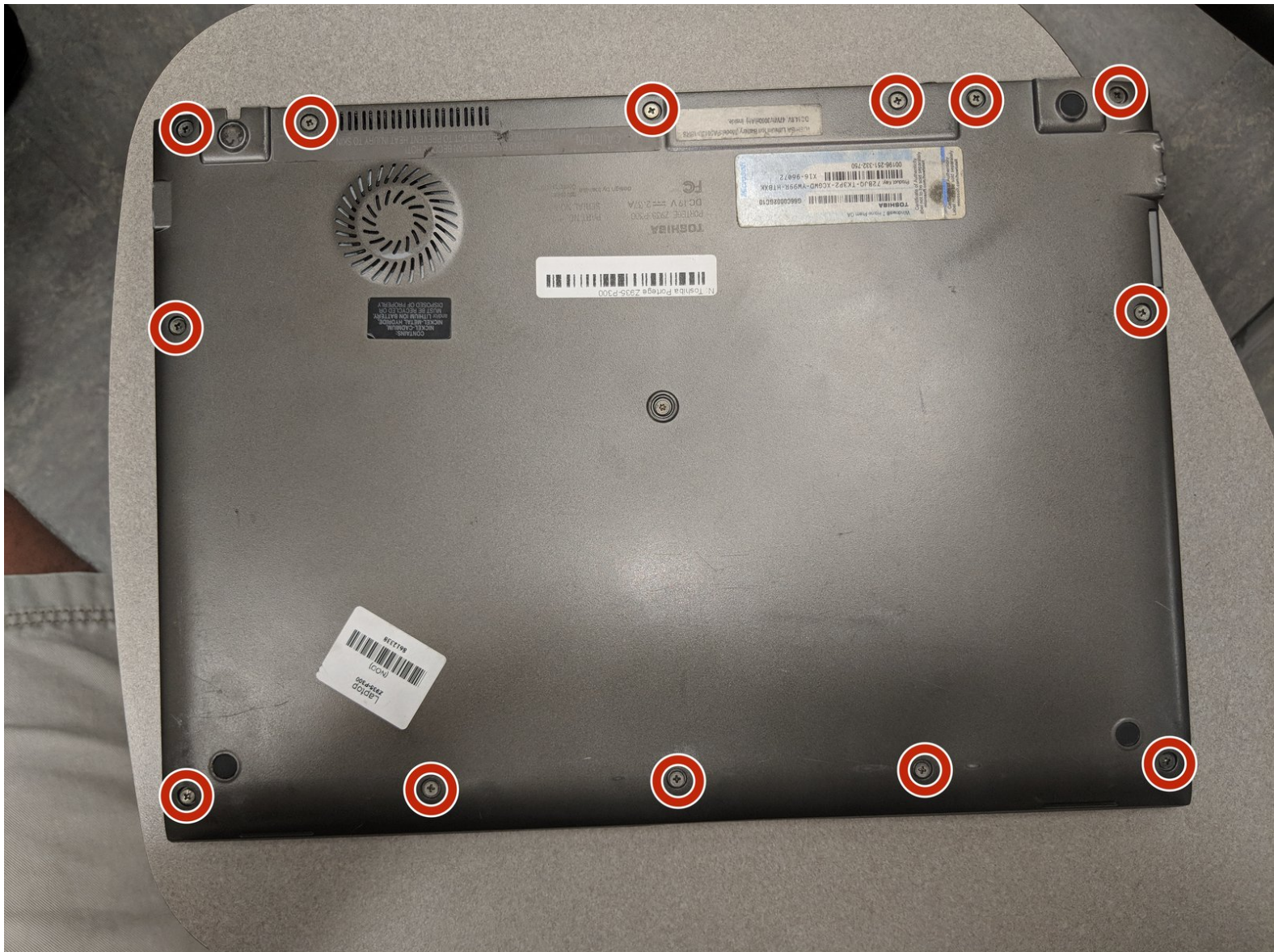




Toshiba Portege Z935-P300 Battery Replacement

Replace the battery on a Toshiba Portege Z935-P300

Written By: David Lopossa



INTRODUCTION

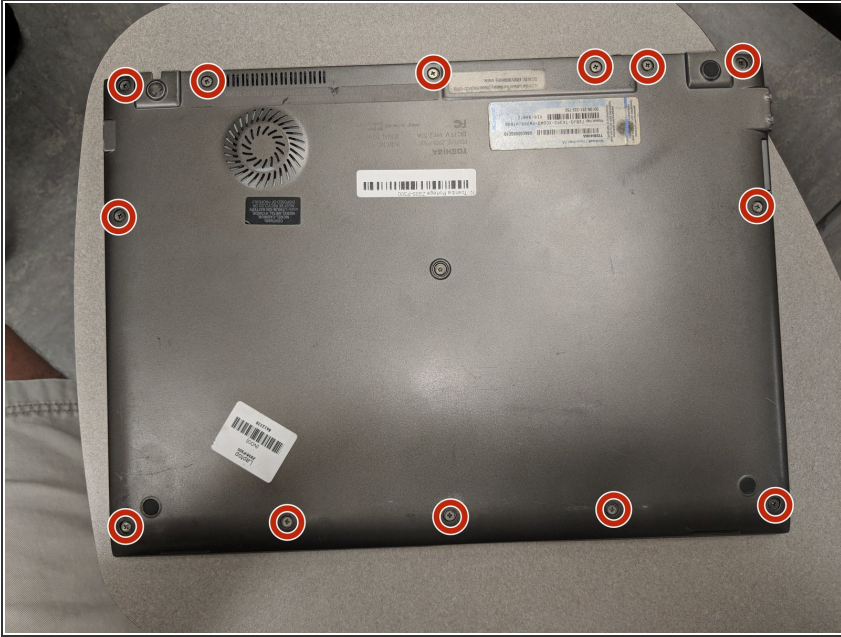
The battery in the laptop is the power source for all components in the laptop. This part may need replaced in order to prevent expansion, or simply because the old one no longer works. It is important to keep the battery away from electrical discharge, due to the potential for damage to occur.



TOOLS:

- [T7 Torx Screwdriver](#) (1)
 - [JIS #1](#) (1)
 - [Spudger](#) (1)
-

Step 1 — Battery



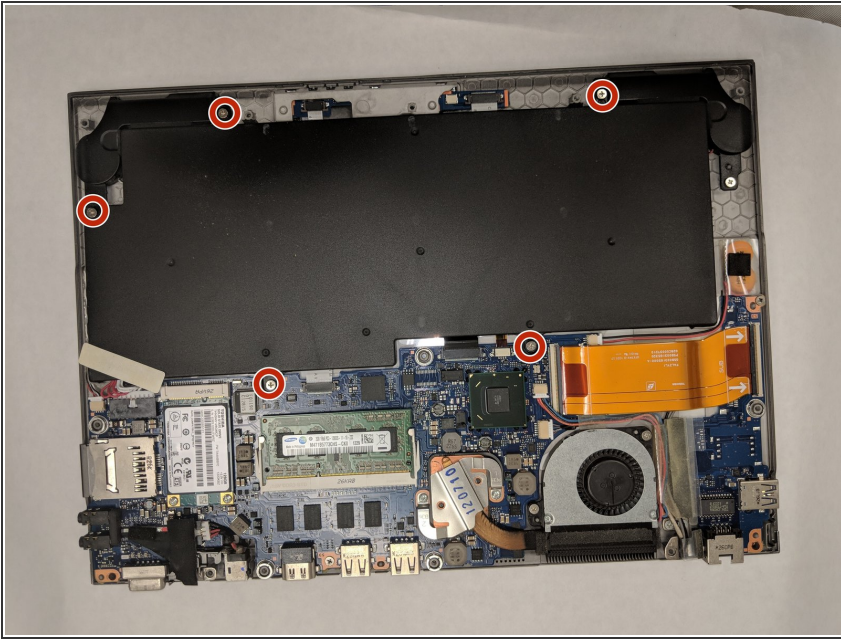
- Remove thirteen 2.5 mm JIS #1 screws.

Step 2



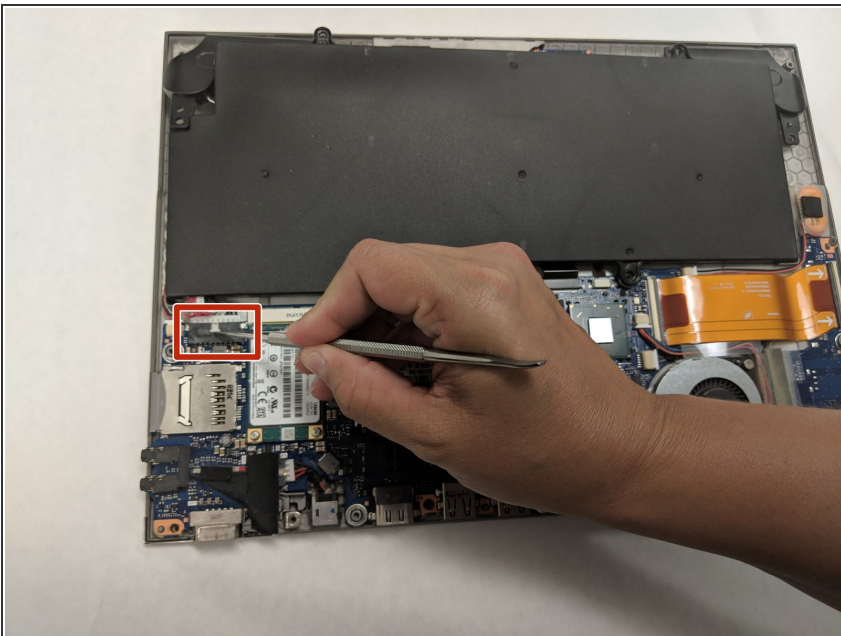
- Remove one 3 mm screw with a T7 Torx screwdriver.

Step 3



- Remove five 2 mm JIS #1 screws.

Step 4



- Push out tab with spudger and remove connector.

To reassemble your device, follow these instructions in reverse order.