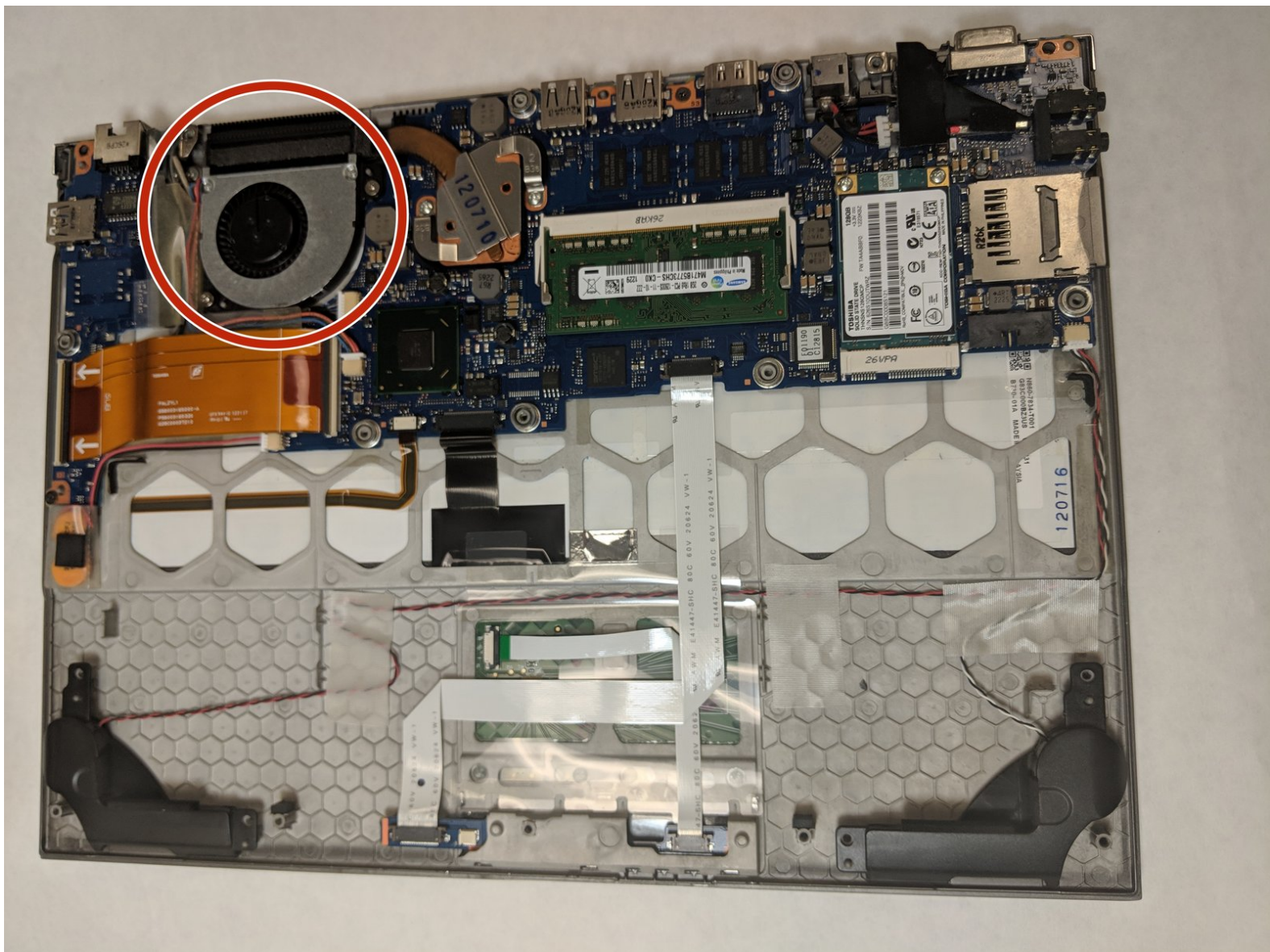




Toshiba Portege Z935-P300 Fan Replacement

Fan replacement on a Toshiba Portege Z935-P300

Written By: David Lopossa



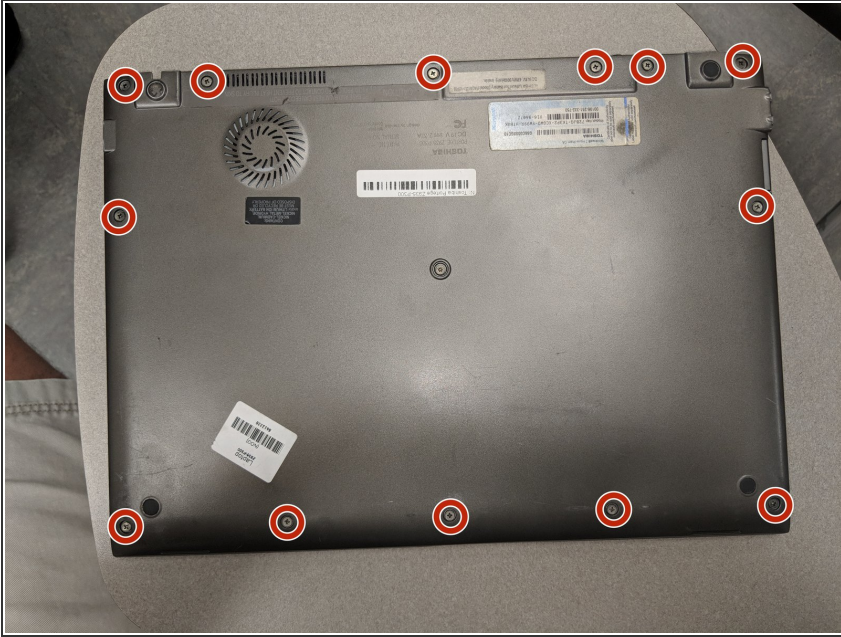
INTRODUCTION

The fan in the laptop helps keep the components in the laptop from over heating. This part may need replaced in order to prevent overheating, or simply because the old fan no longer works. It is important to keep the fan away from electrical discharge, due to the potential for damage to occur.

TOOLS:

- [JIS #1](#) (1)
 - [Spudger](#) (1)
 - [T7 Torx Screwdriver](#) (1)
-

Step 1 — Battery



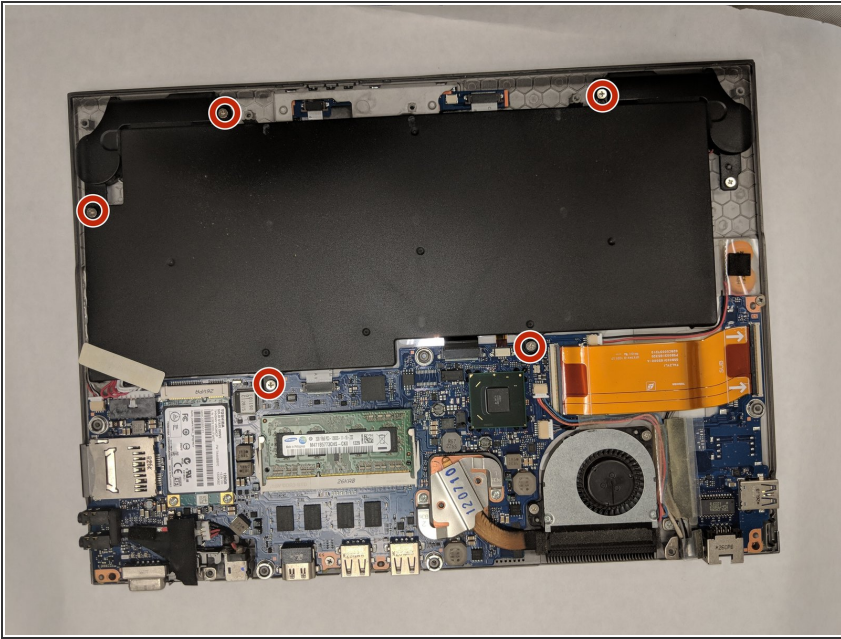
- Remove thirteen 2.5 mm JIS #1 screws.

Step 2



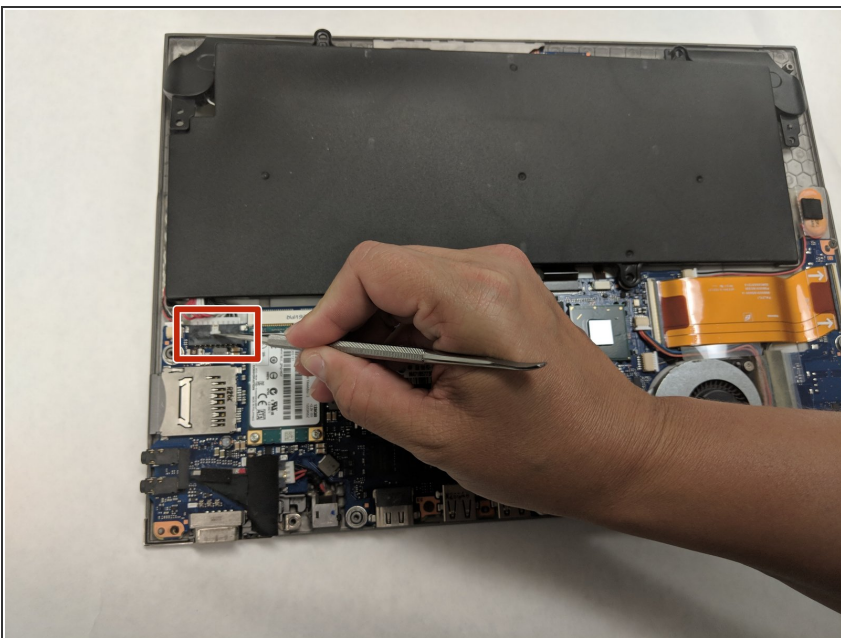
- Remove one 3 mm screw with a T7 Torx screwdriver.

Step 3



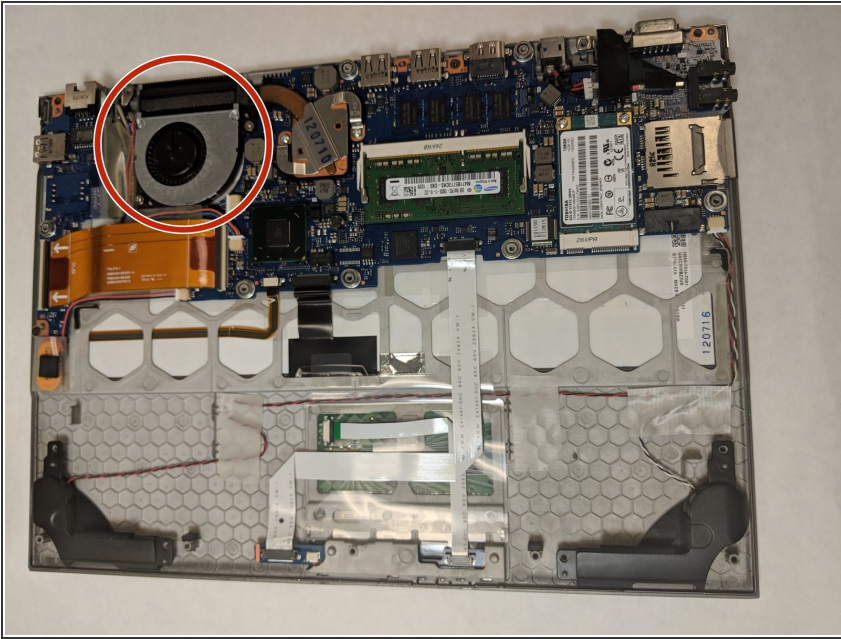
- Remove five 2 mm JIS #1 screws.

Step 4



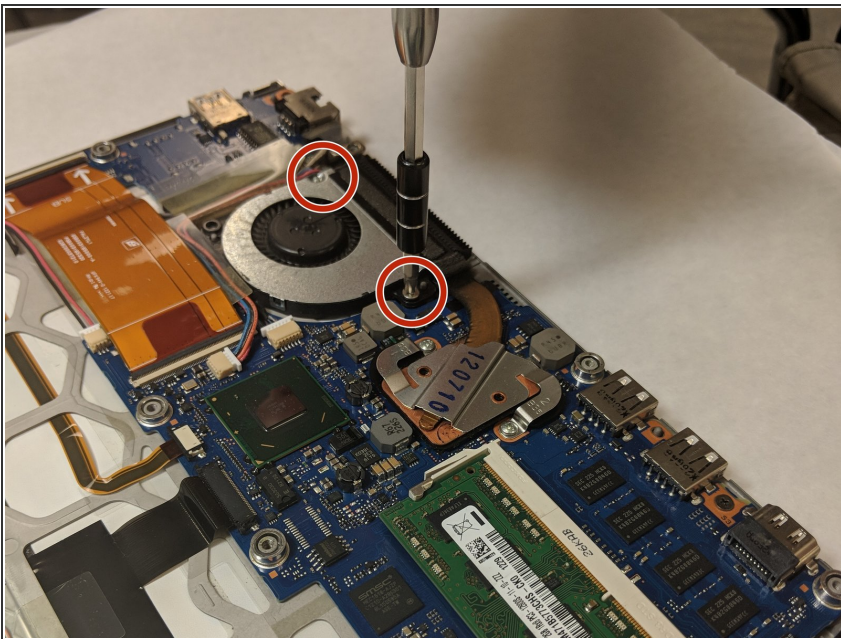
- Push out tab with spudger and remove connector.

Step 5 — Fan



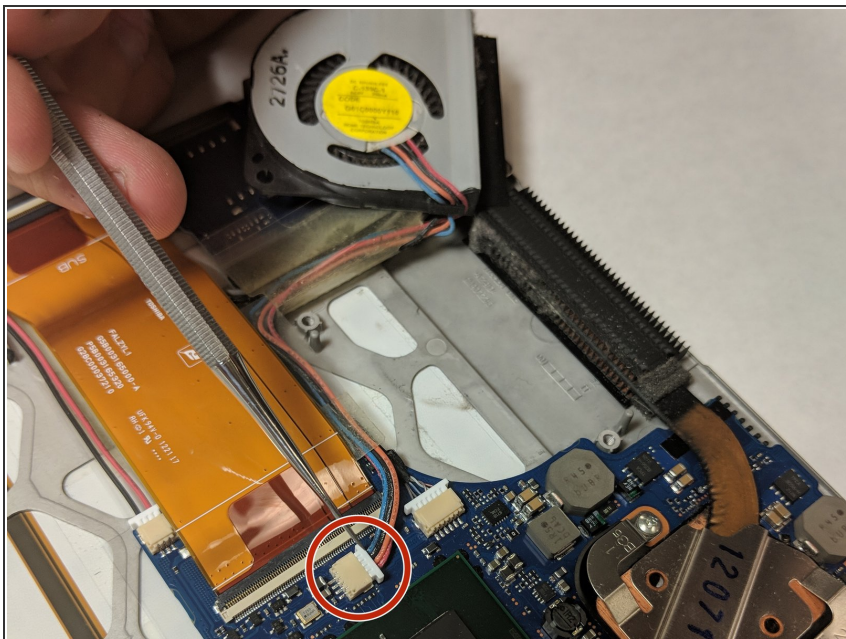
- Remove the backing plate and battery. Identify the fan.

Step 6



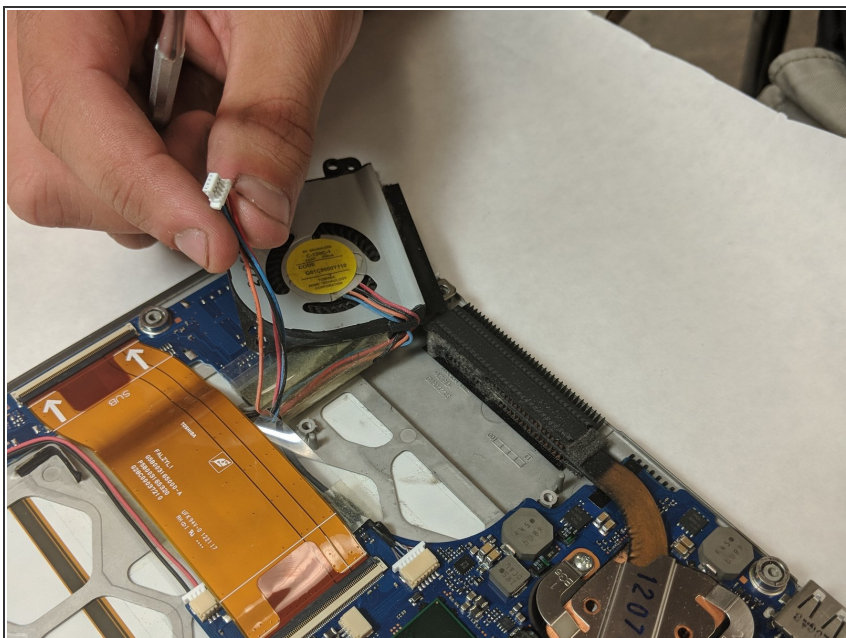
- Remove two 2.5 mm JIS #1 screws.

Step 7



- Disconnect attached wires using a spudger. Press down tab shown and remove.

Step 8



- Completely remove wires, and remove fan assembly from laptop.

To reassemble your device, follow these instructions in reverse order.