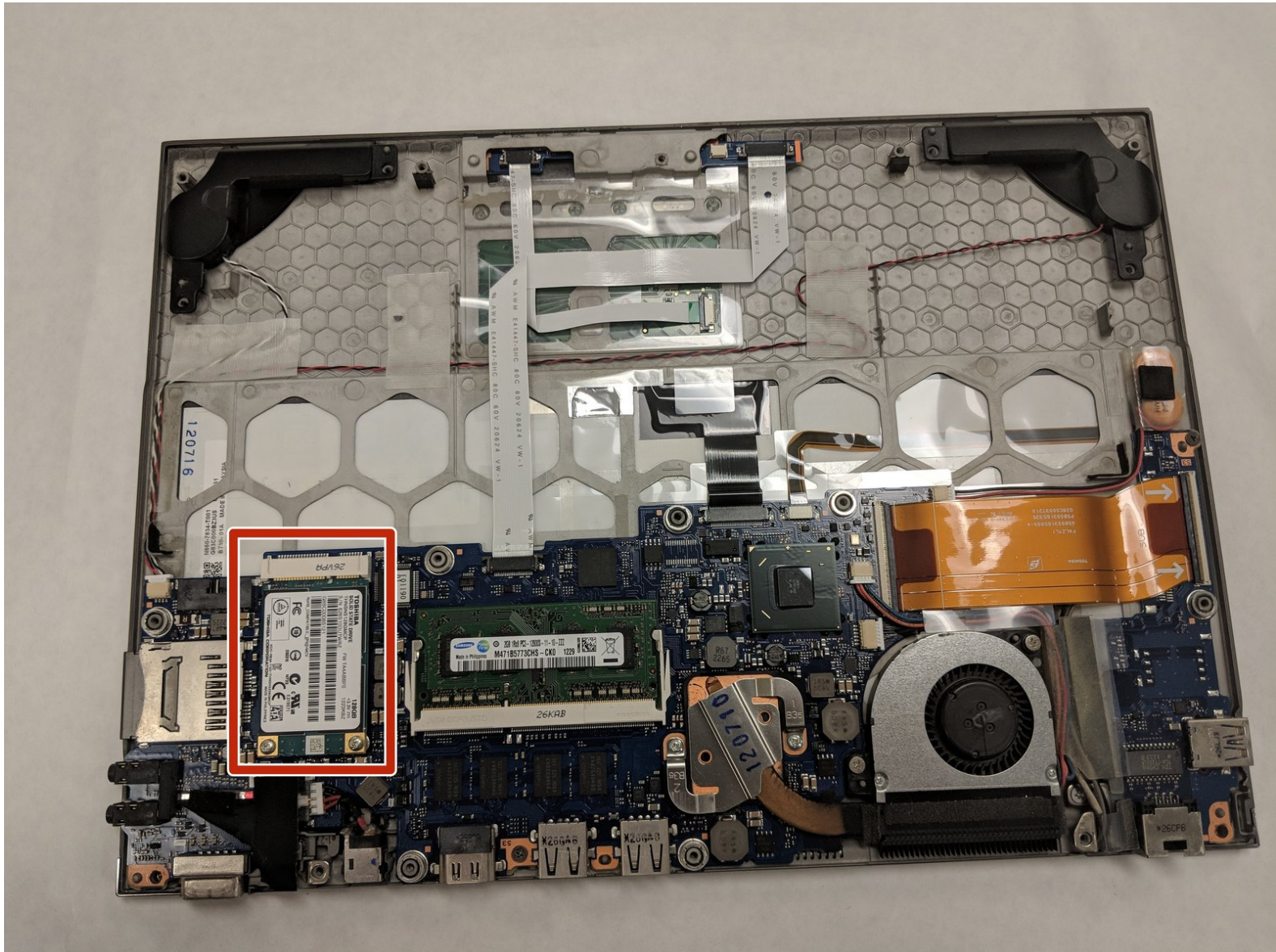




Toshiba Portege Z935-P300 Hard Drive Replacement

Replacing the Hard Drive on a Toshiba Portege Z935-P300.

Written By: David Lopossa



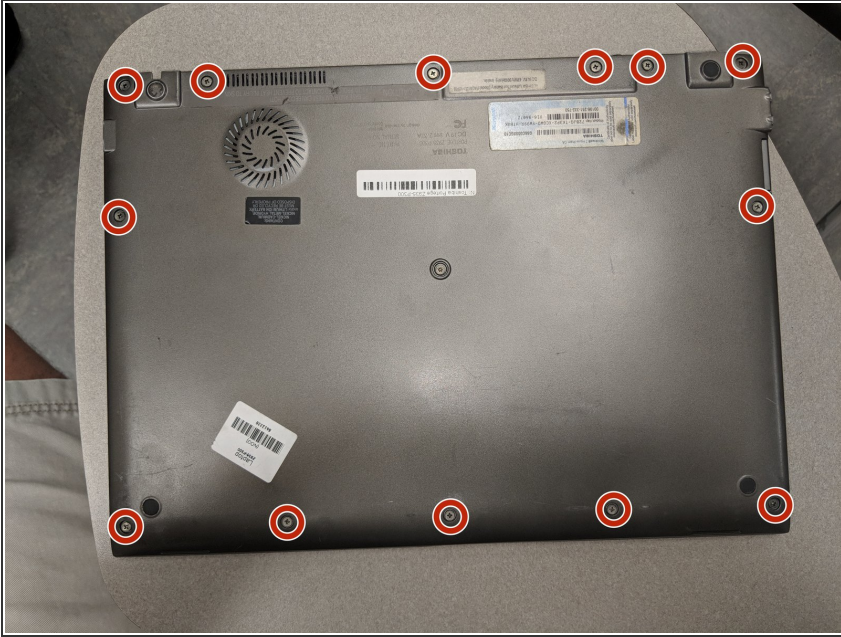
INTRODUCTION

A hard drive acts as a memory bank for a computer. This part may need replaced in order to expand memory, or simply because there is a memory error. It is important to keep the hard drive away from electrical discharge, as well as magnetic devices, due to the potential for damage to occur.

TOOLS:

- [JIS #1](#) (1)
 - [Spudger](#) (1)
 - [T7 Torx Screwdriver](#) (1)
-

Step 1 — Battery



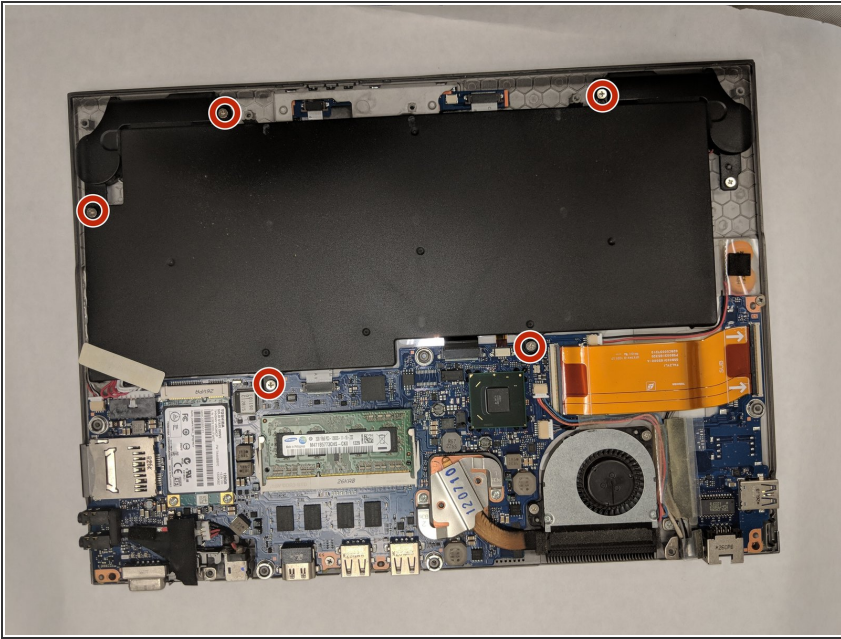
- Remove thirteen 2.5 mm JIS #1 screws.

Step 2



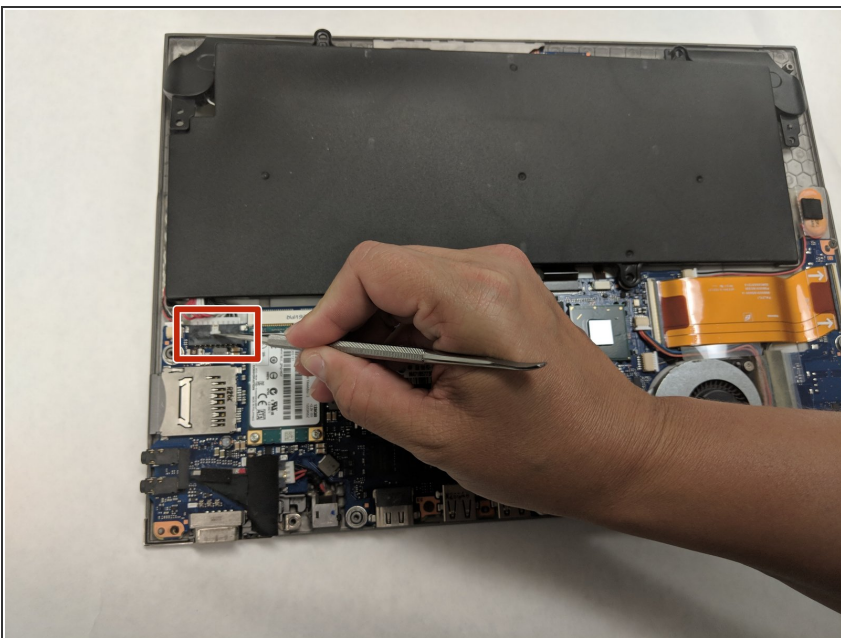
- Remove one 3 mm screw with a T7 Torx screwdriver.

Step 3



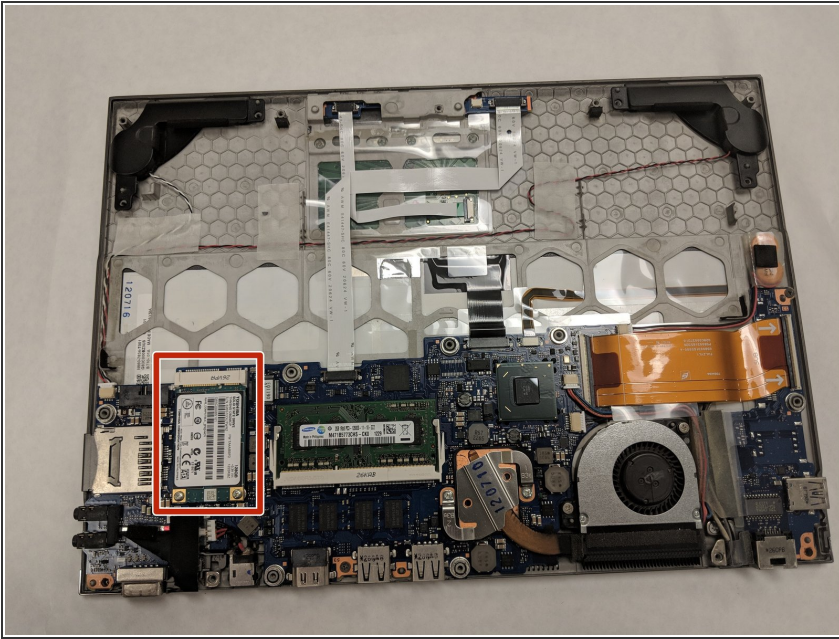
- Remove five 2 mm JIS #1 screws.

Step 4



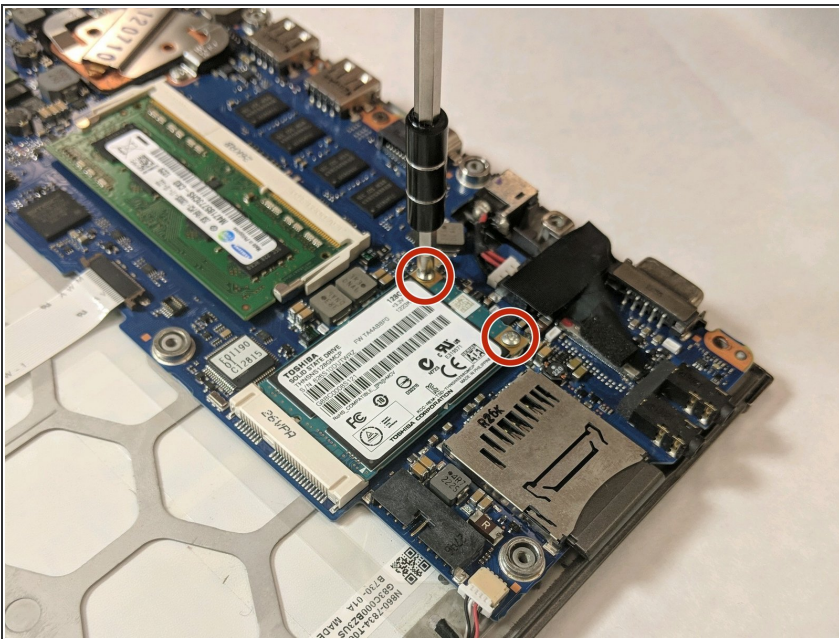
- Push out tab with spudger and remove connector.

Step 5 — Hard Drive



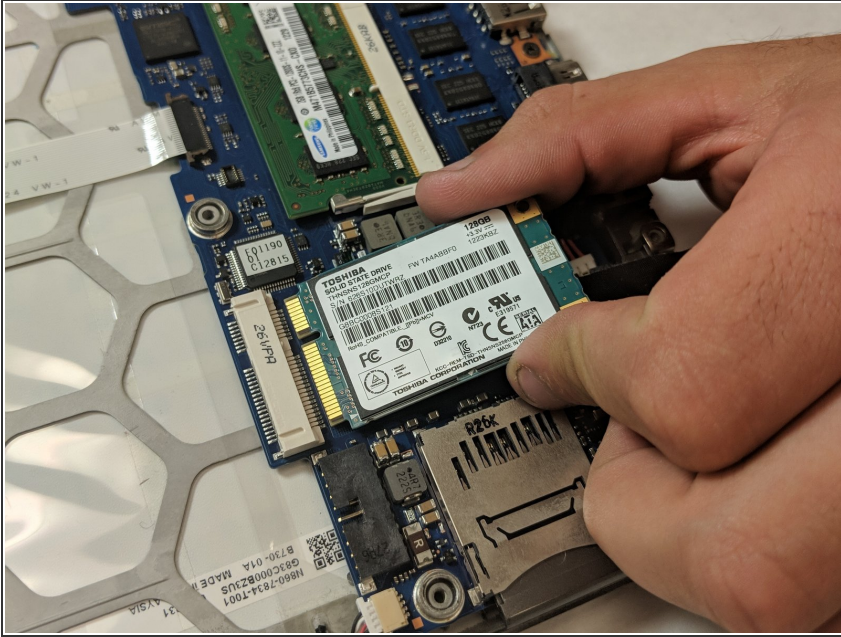
- Remove the backing plate and battery. Identify the hard drive.

Step 6



- Remove two 2 mm screws with a JIS #1 screwdriver.

Step 7



- Lift and grasp firmly, and pull away from slot.

To reassemble your device, follow these instructions in reverse order.