



Toshiba Qosmio X505-Q860 Hard Disk Drive Cover Panel Replacement

This guide will show you how to remove the cover panel of the Hard Disk Drive.

Written By: Danielle Lapensee-Rankine



INTRODUCTION

If you need to get to the Hard Disk Drive or need to remove the CD drive, use this guide.



TOOLS:

- [JIS #0 Screwdriver](#) (1)
-

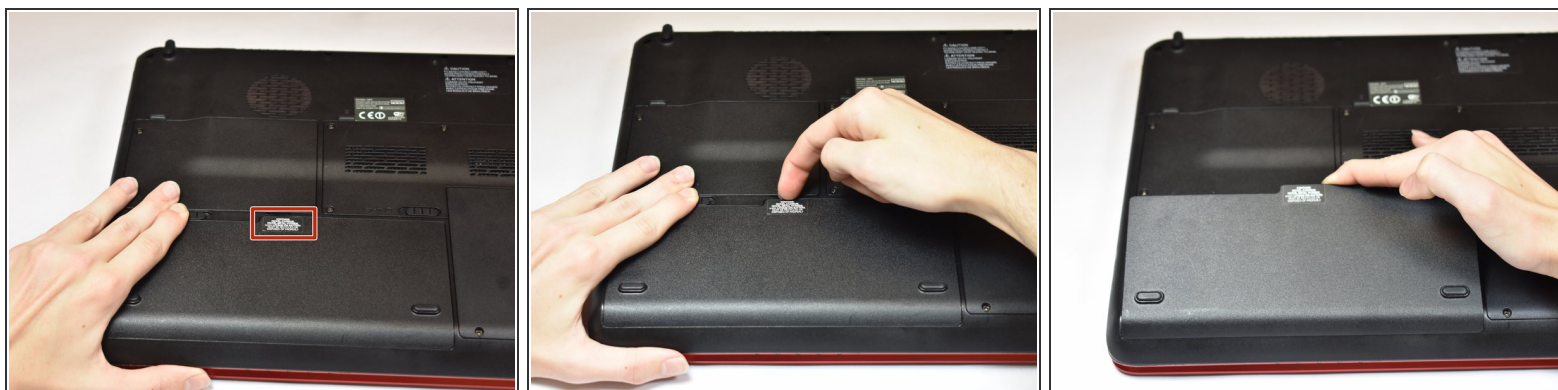
Step 1 — Battery



⚠ Turn off laptop before starting.

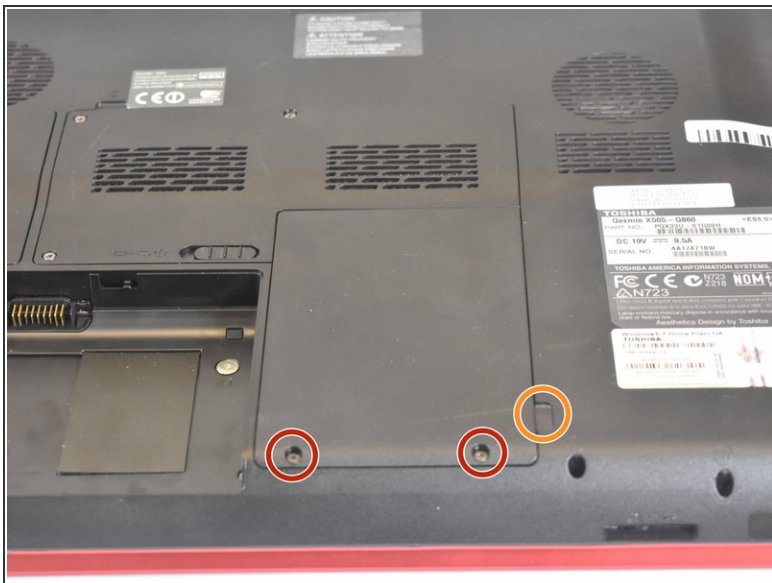
- Flip the switch on the right to the unlocked position.

Step 2



- Hold the switch on the left and pull the battery up towards you, using the marked tab, to take it out.

Step 3 — Hard Disk Drive Cover Panel



- Use a JIS #0 screwdriver to unscrew the two 4.6 mm screws at the base of the casing.
- Pull off the part of the case that's now loose by the indicated tab.

To reassemble your device, follow these instructions in reverse order.