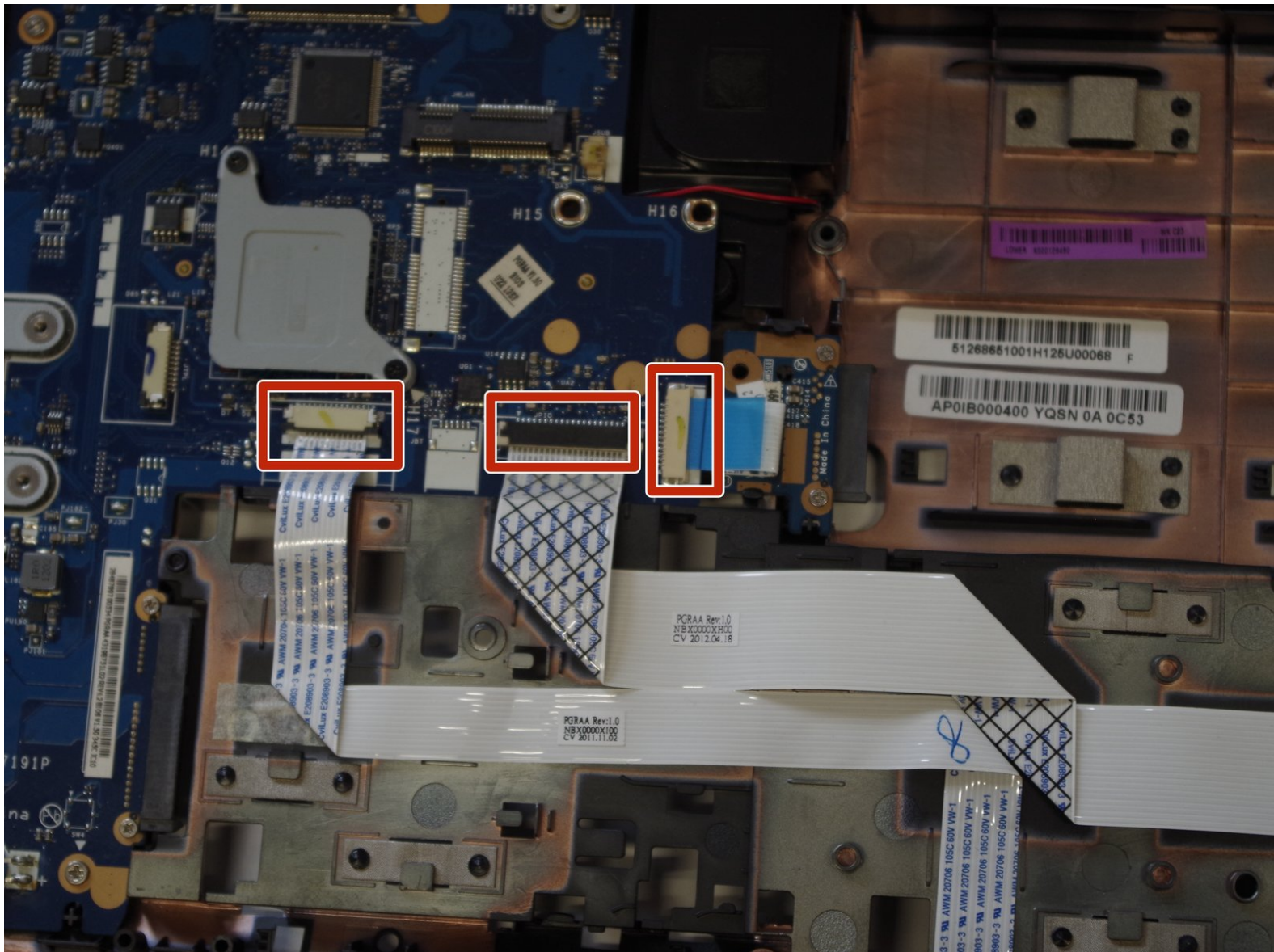




Toshiba Qosmio X775-3DV80 Motherboard Replacement

This guide shows how to replace the motherboard in your Toshiba Qosmio X775-3DV80.

Written By: Jesse Adam Ory





TOOLS:

- [Spudger](#) (1)
 - [Tweezers](#) (1)
 - [Phillips #00 Screwdriver](#) (1)
 - [iFixit Opening Tools](#) (1)
-

Step 1 — Battery



- Turn your laptop over so the underside is facing up.

Step 2



- Identify the two sliding locks on either side of the battery.
- Simultaneously slide both locks outward to release the battery.

Step 3



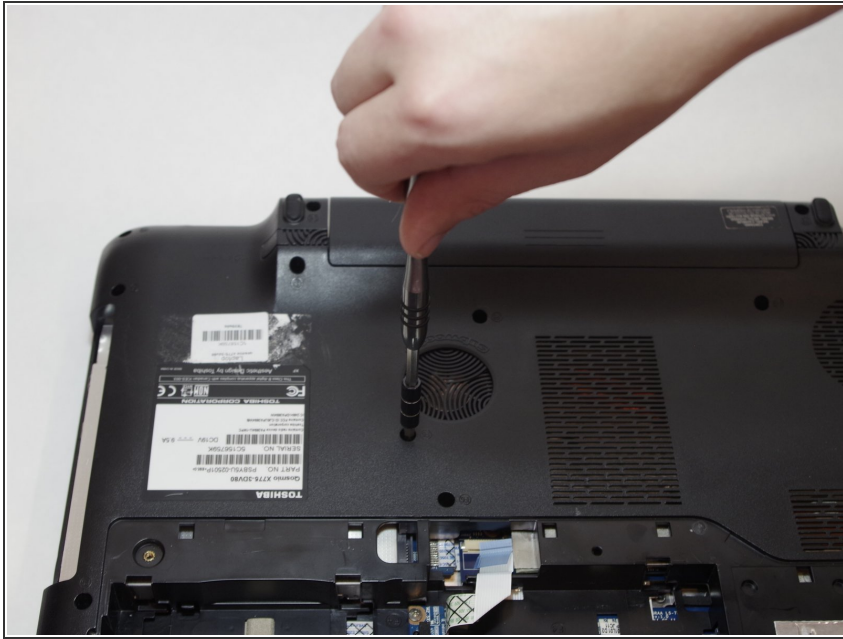
- Pull the battery straight out of its slot to remove it.

Step 4 — Optical Drive



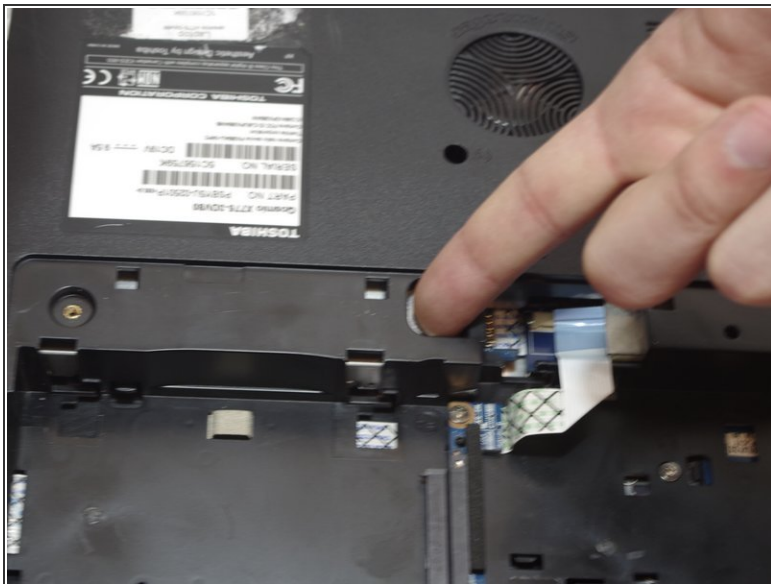
- Locate the optical drive retaining screw on the underside of the laptop.

Step 5



- Using a Phillips #00 screwdriver, remove the optical drive retaining screw.

Step 6



- Using your finger or a spudger, push the optical drive out of its compartment so you can grab it.
- Pull the optical drive out of its slot in the side of the laptop.

Step 7 — RAM



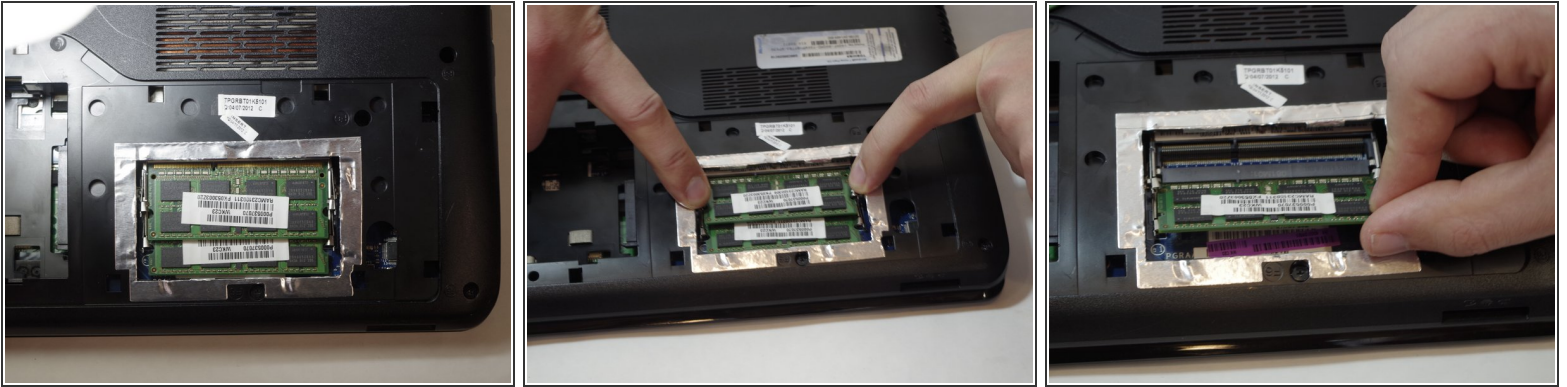
- Loosen the single screw on the service panel by twisting counterclockwise with a Phillips #00 screwdriver.
- ⓘ It is a captive screw that will remain attached to the service panel.

Step 8



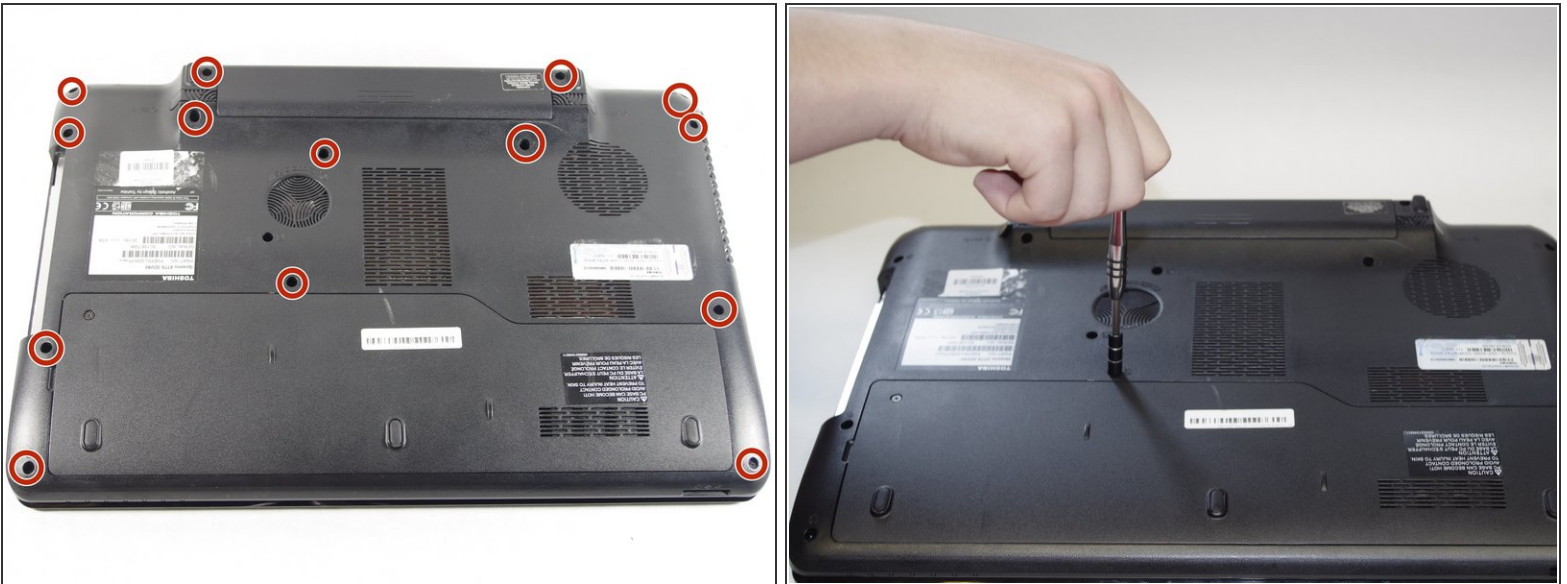
- Using a spudger or plastic opening tool, pry off the service panel.

Step 9



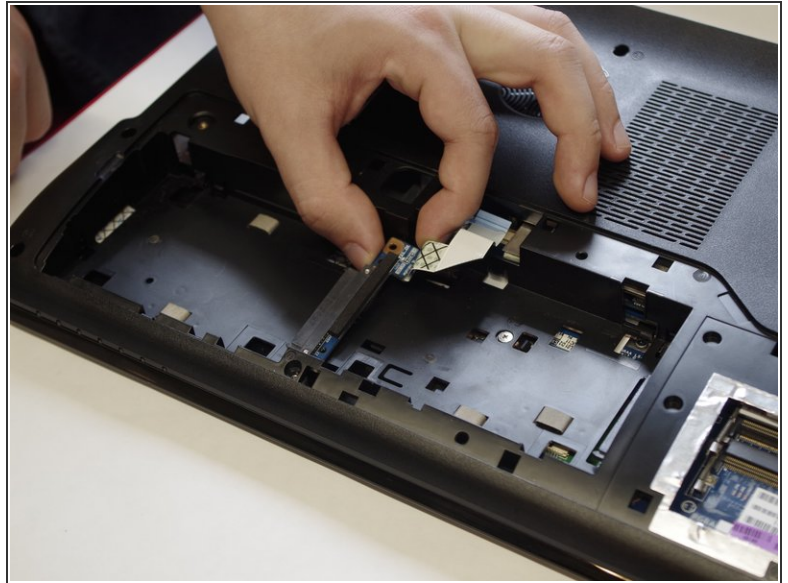
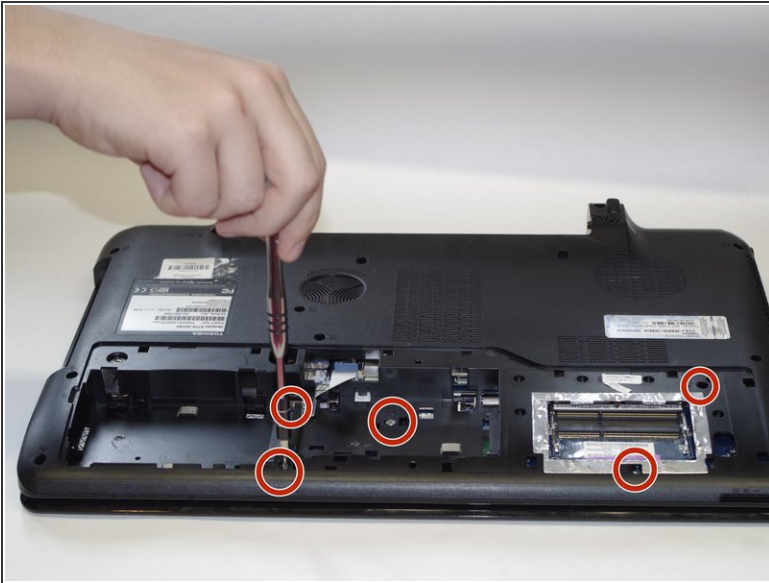
- Using your fingers, pull the retaining clips away from the RAM sticks.
- Pull the RAM sticks out of the slots.

Step 10 — Keyboard



- Using a Phillips #00 screwdriver, remove all the remaining fourteen screws from the bottom case of the laptop.
- ⓘ The service panel should already be removed.

Step 11



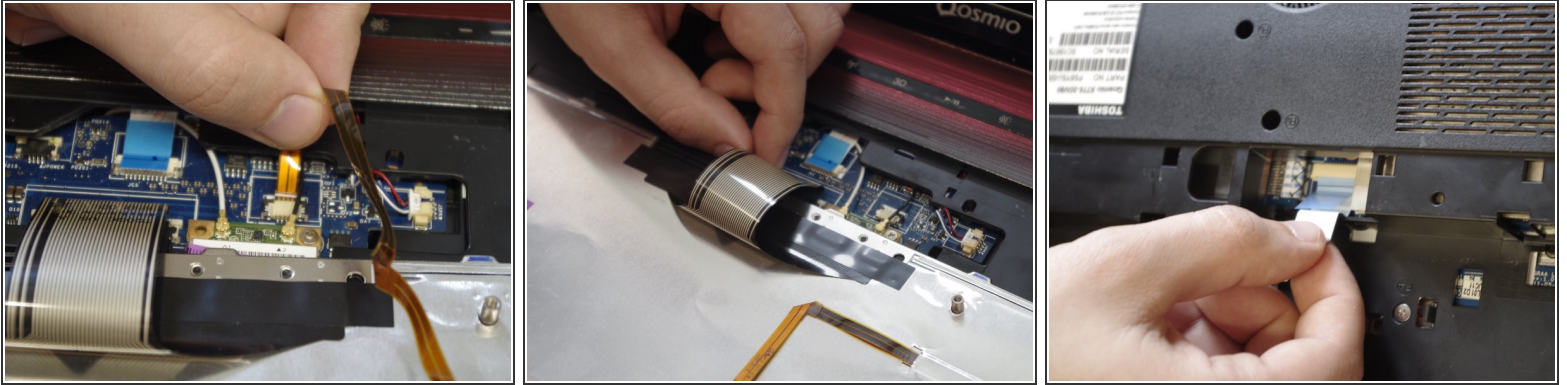
- Using a Phillips #00 screwdriver, remove the five screws under the service panel.
- Remove the retaining clip.

Step 12



- Using a spudger, pry the keyboard from the top panel of the laptop.
- ① Make sure to pry it off all around.

Step 13



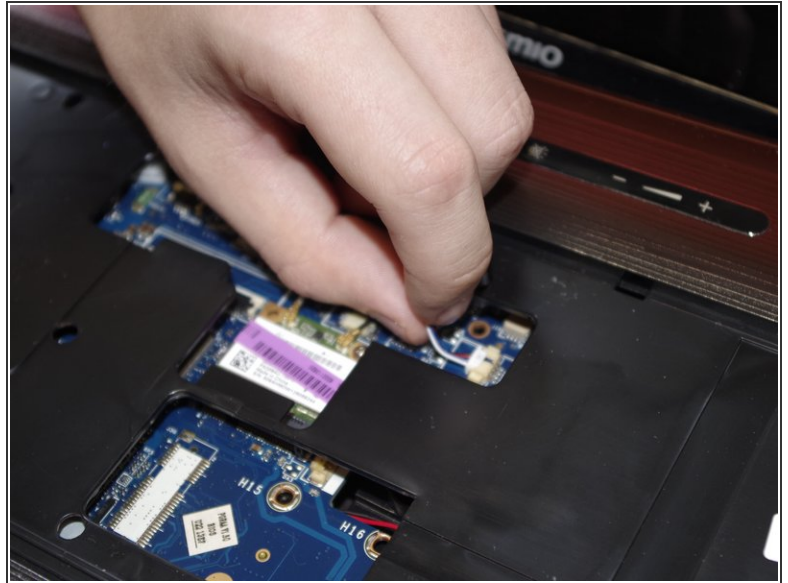
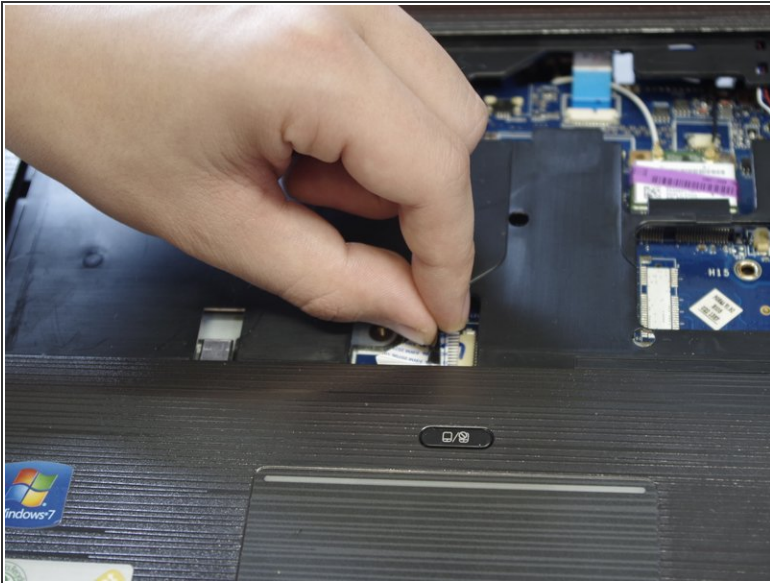
- Disconnect the two ribbon cables connecting the keyboard to the laptop.
- Unplug the connector on the bottom of the laptop.

Step 14 — Fan



- Separate the two halves of the base of the laptop.

Step 15



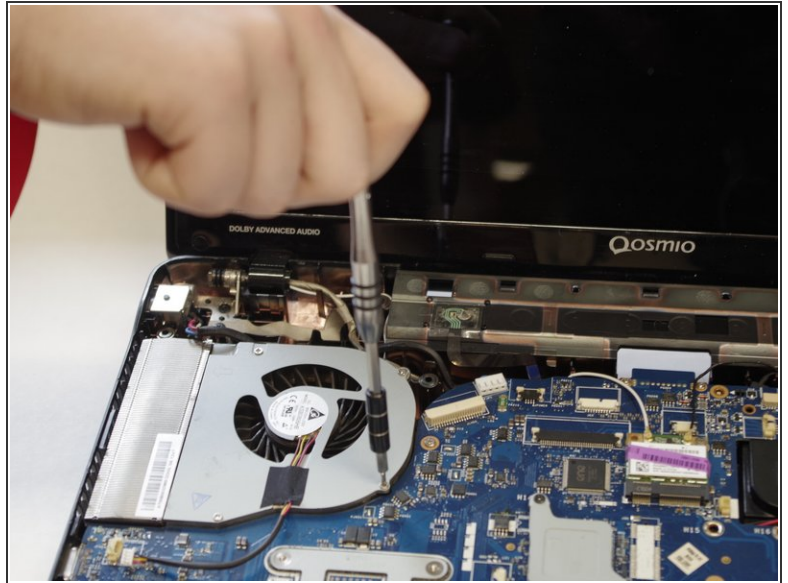
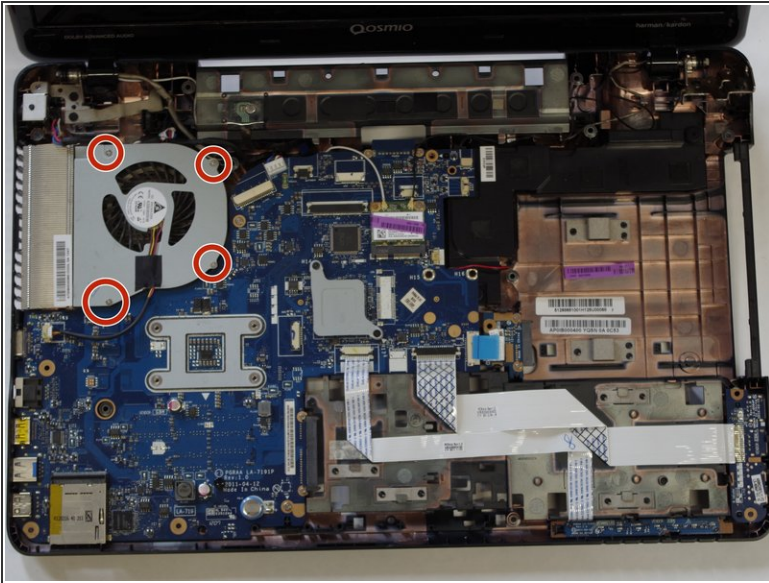
- Disconnect the two cables.

Step 16



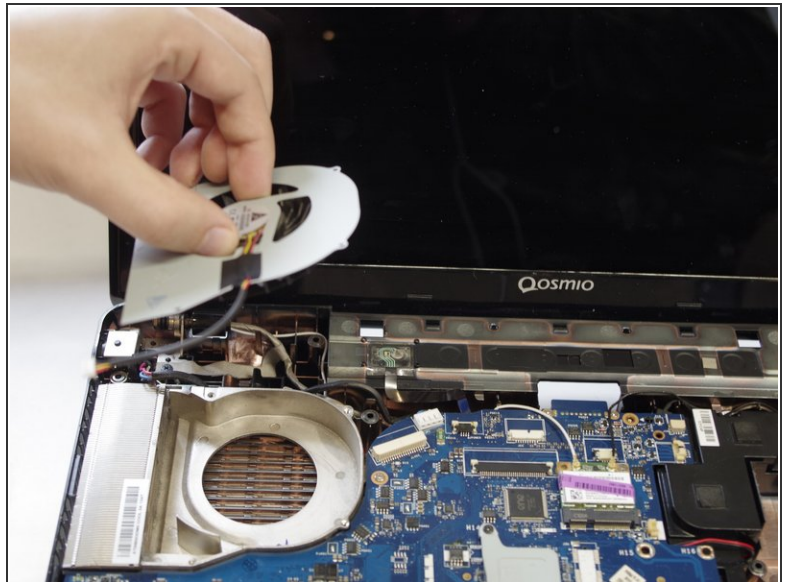
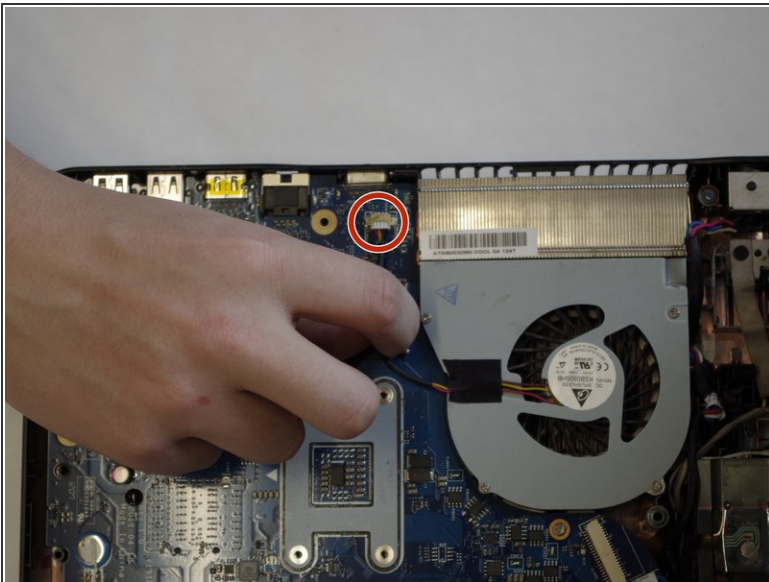
- Remove the palmrest assembly.

Step 17



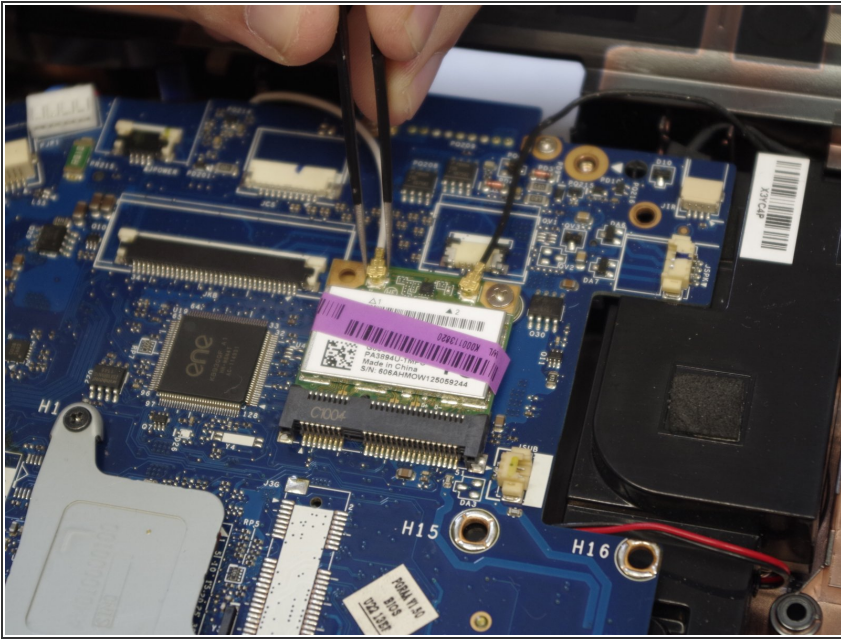
- Using a Phillips #00 screwdriver, remove the four screws securing the fan assembly to the laptop.

Step 18



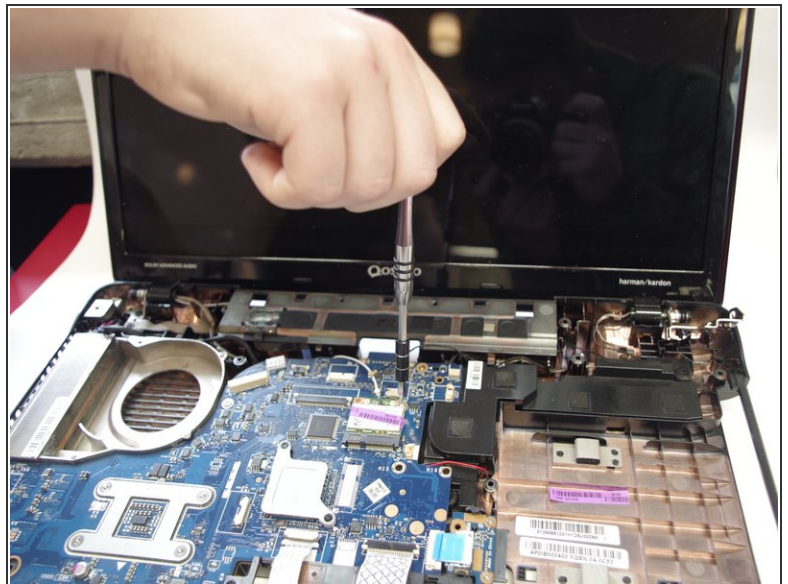
- Unplug the fan-motherboard connector.
- Remove the fan unit.

Step 19 — Wifi Chip



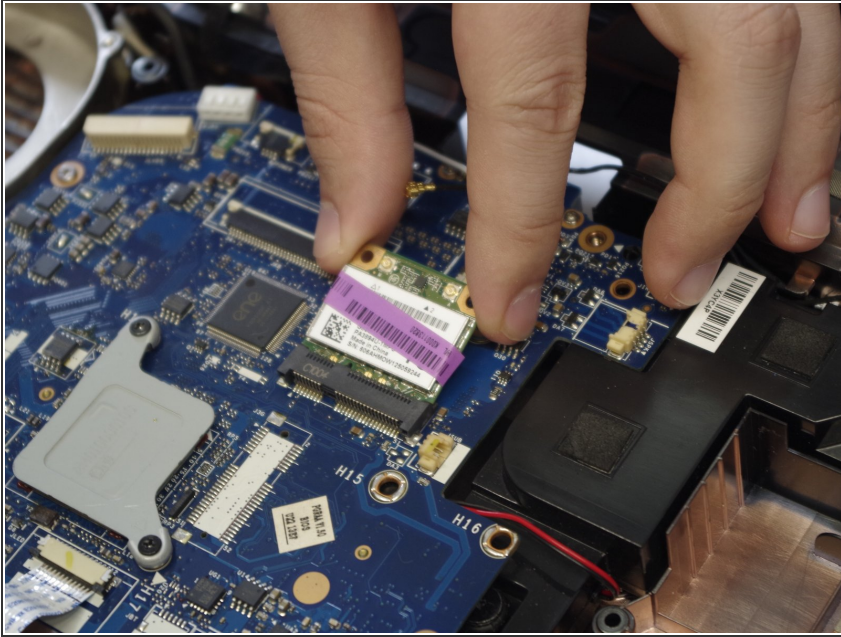
- Detach the two coaxial connections from the wifi chip.

Step 20



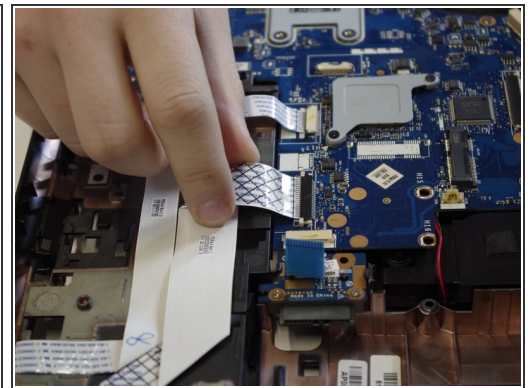
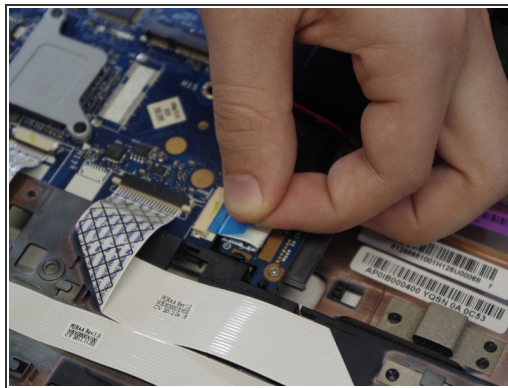
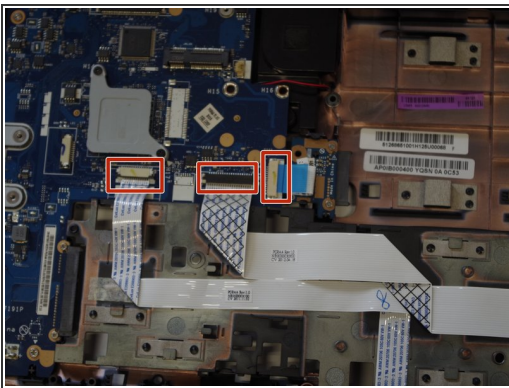
- Using a Phillips #00 screwdriver, remove the two screws from the wifi chip.

Step 21



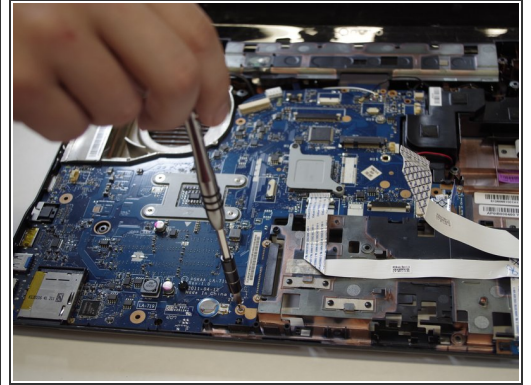
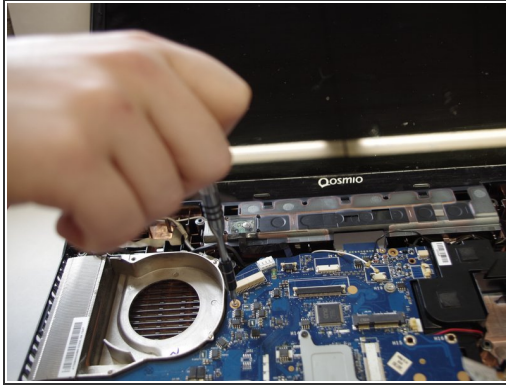
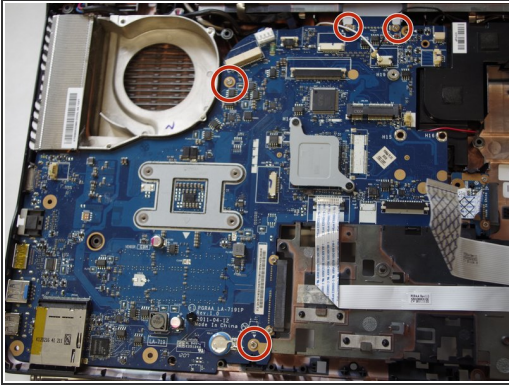
- Remove the wifi chip by pulling it out of the PCIe slot.

Step 22 — Motherboard



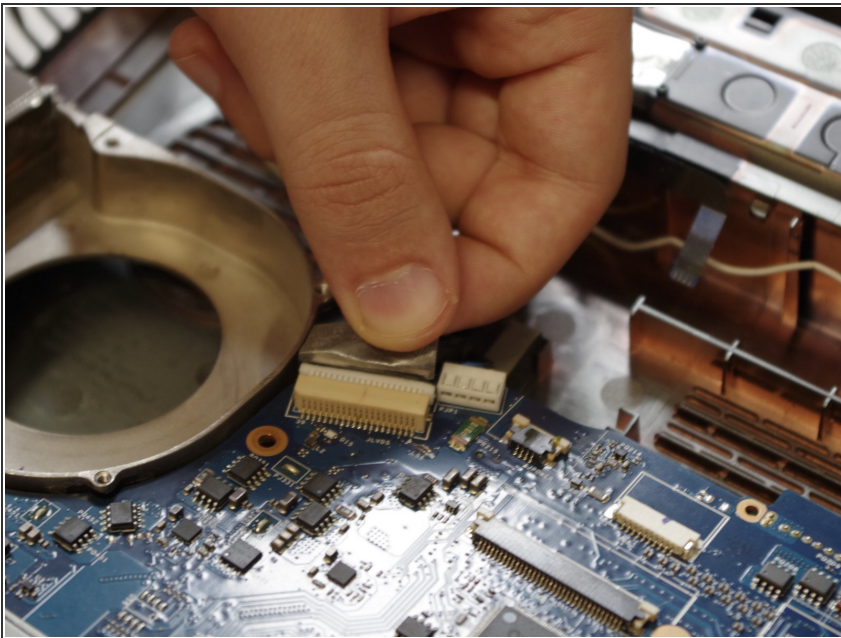
- Disconnect the three ribbon cables.

Step 23



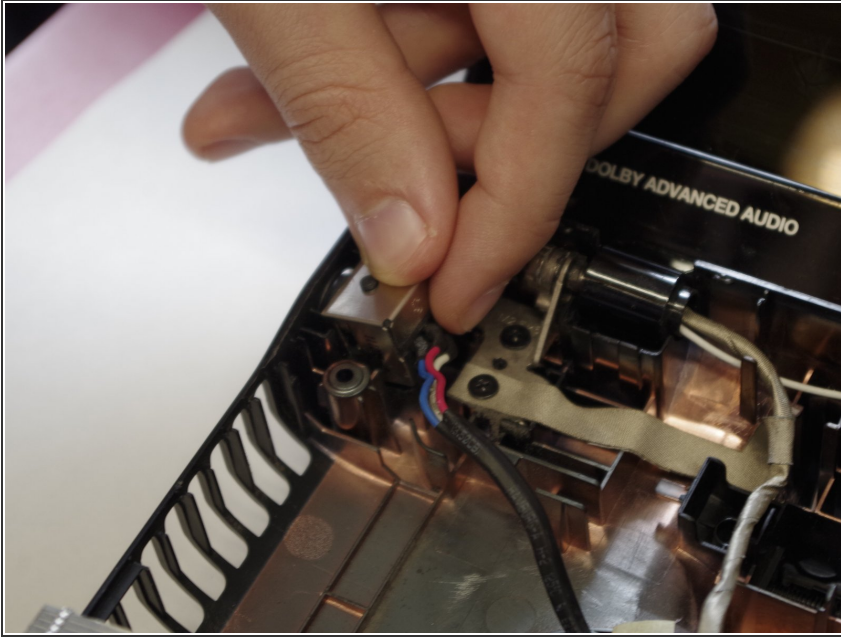
- Using a Phillips #00 screwdriver, remove the four screws securing the motherboard to the laptop.

Step 24



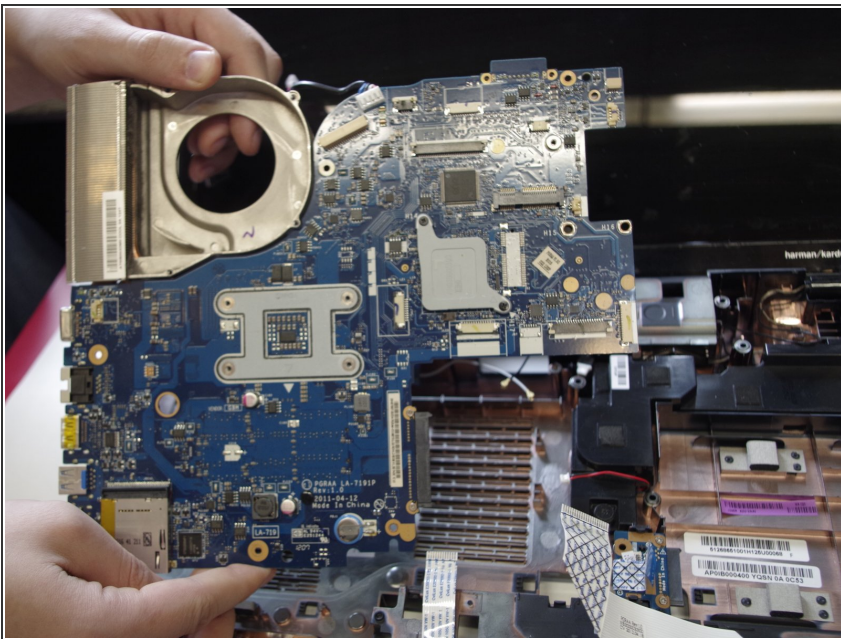
- Disconnect the pinned connector.

Step 25



- Remove the 4-pin connector housing by gently wiggling it back and forth.

Step 26



- Remove the motherboard.

To reassemble your device, follow these instructions in reverse order.