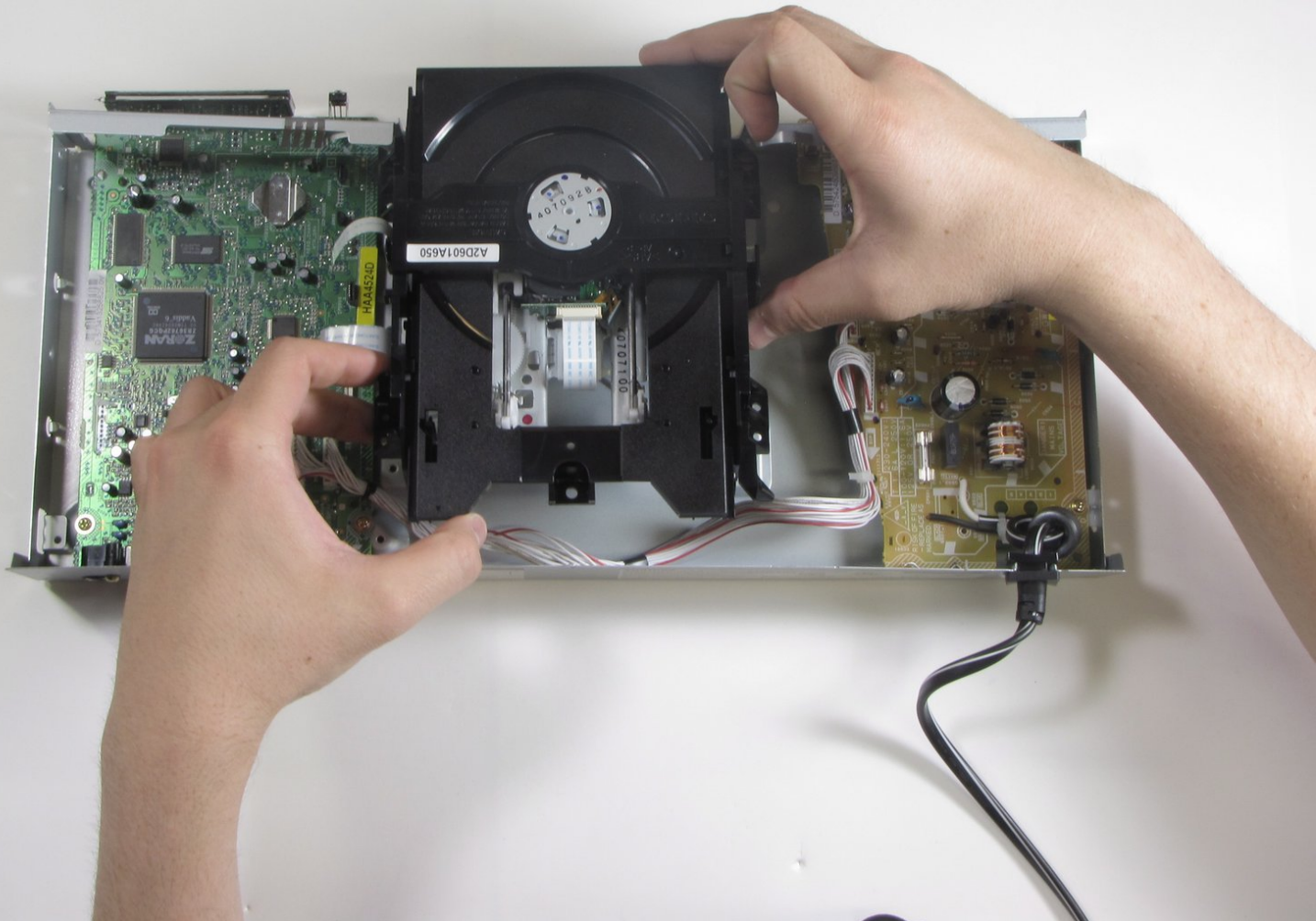




Toshiba SD-K740 Disc Drive Replacement

This is a guide to remove the disc drive of the Toshiba SD-K740 DVD player.

Written By: Joe Murphy



INTRODUCTION

This guide gives instructions on how to remove the disc drive of the Toshiba SD-K740 DVD player.



TOOLS:

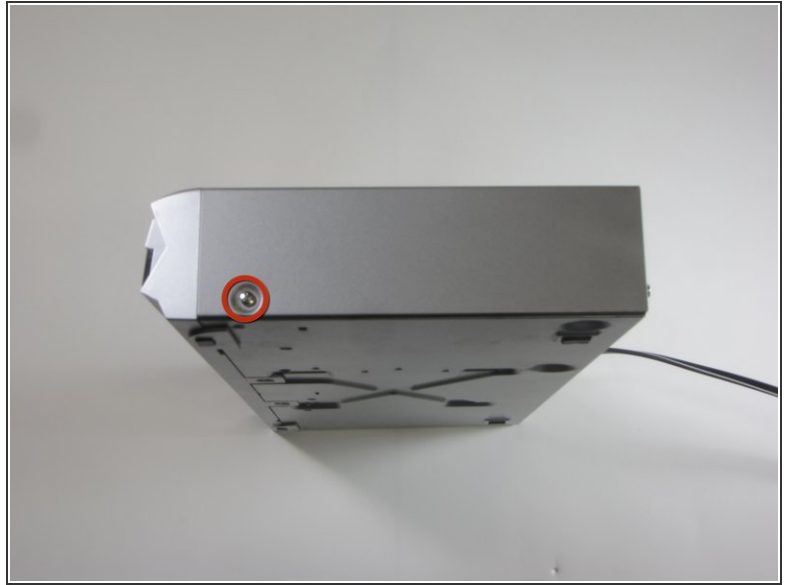
- [Phillips #2 Screwdriver](#) (1)
-

Step 1 — Top Panel



- ⚠ Make sure the DVD player is unplugged before beginning.
- Remove the three .303 inch screws from the back panel using a #0 Phillips head screwdriver.

Step 2



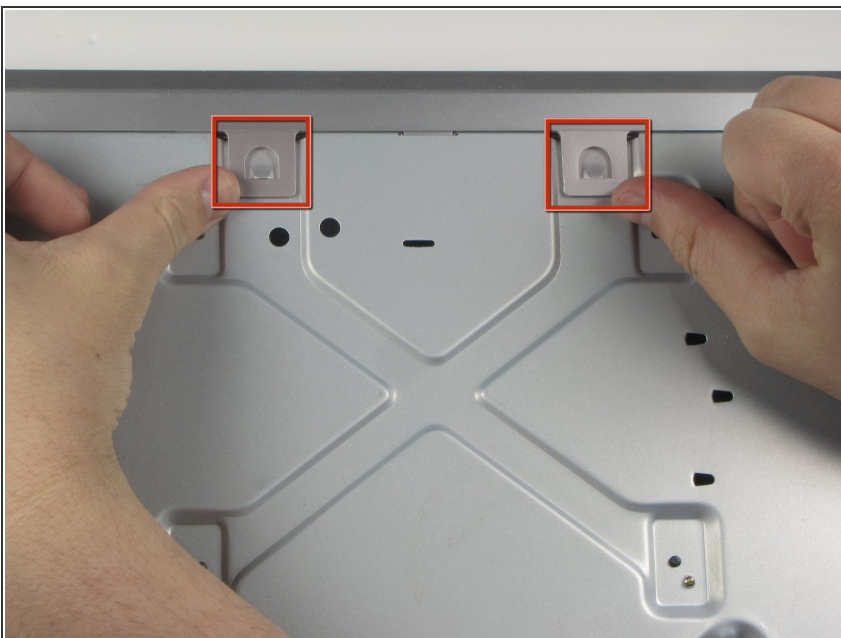
- i* Turn the DVD player on its side.
 - Remove the .303 inch screw.
- i* Now flip the DVD player onto its other side.
 - Remove the .303 inch screw from this side.

Step 3



- ① Flip the DVD player over onto its front face.
- Remove the back panel by lifting up and pulling it towards yourself.

Step 4 — Front Panel



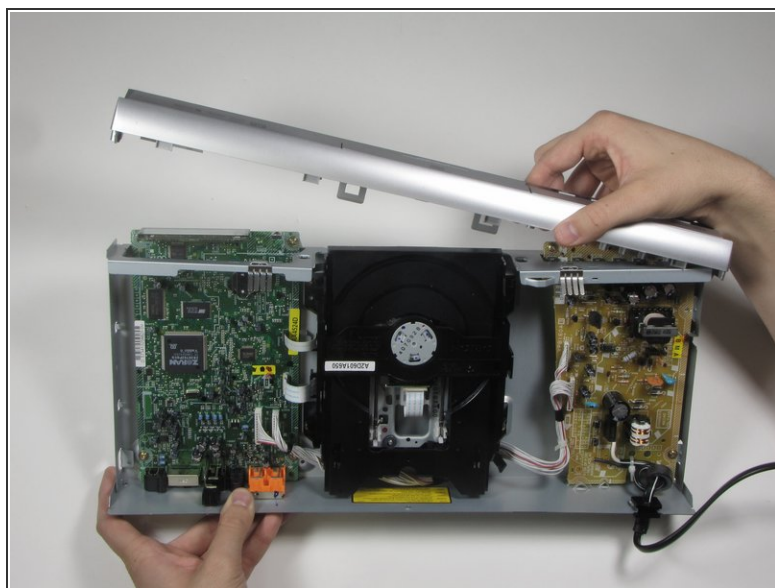
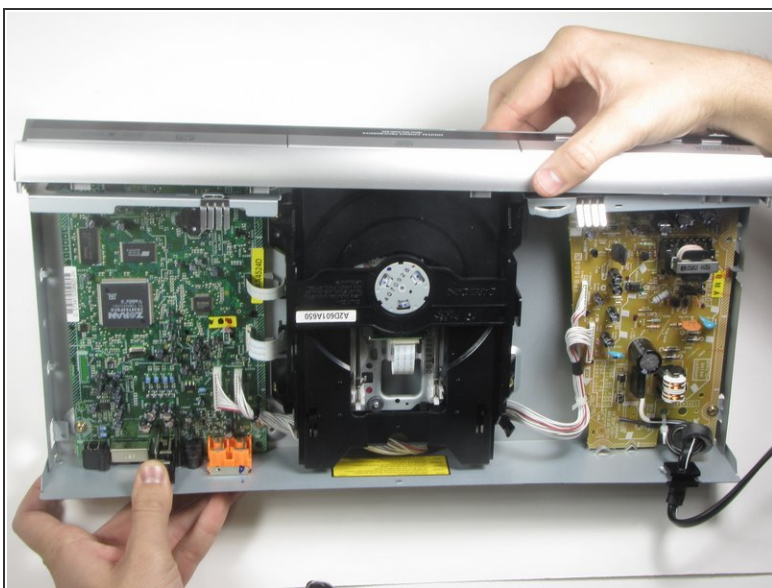
- ① Flip the DVD player so its top is sitting on your working surface.
- Lift and push away each of the two tabs located in the middle of the player.
- ⚠ The front panel will not come off during this step, so do not force it.

Step 5



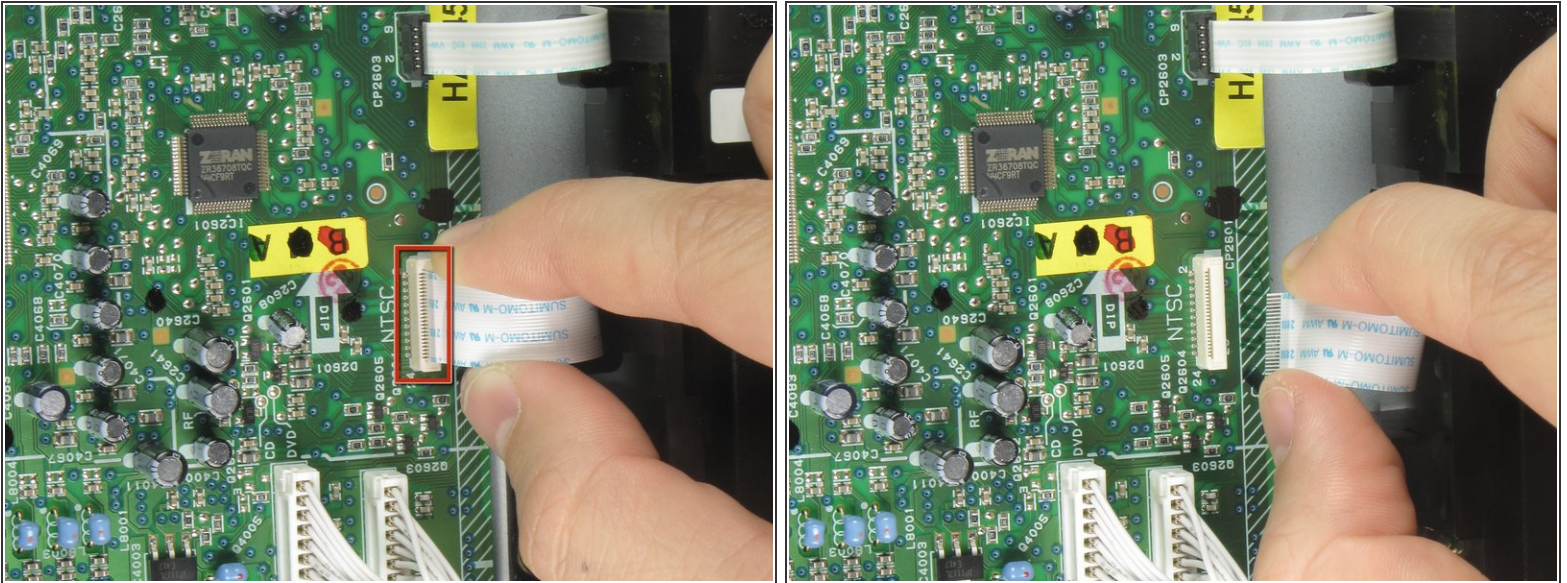
- ❗ Flip the DVD player on its side.
- Lift and slide forward a single tab on the side.
- ⚠ The front panel will not come off during this step, so do not force it.

Step 6



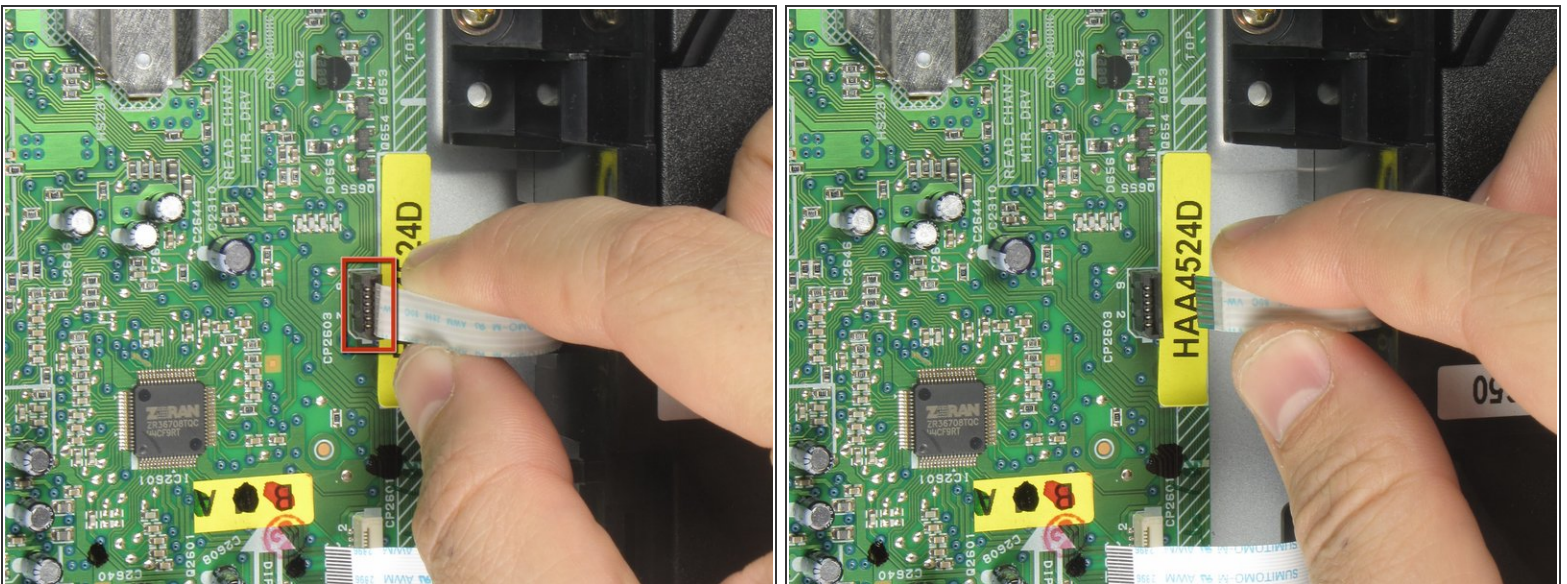
- Grasp the front panel and pull forward and to your right to remove.

Step 7 — Disc Drive



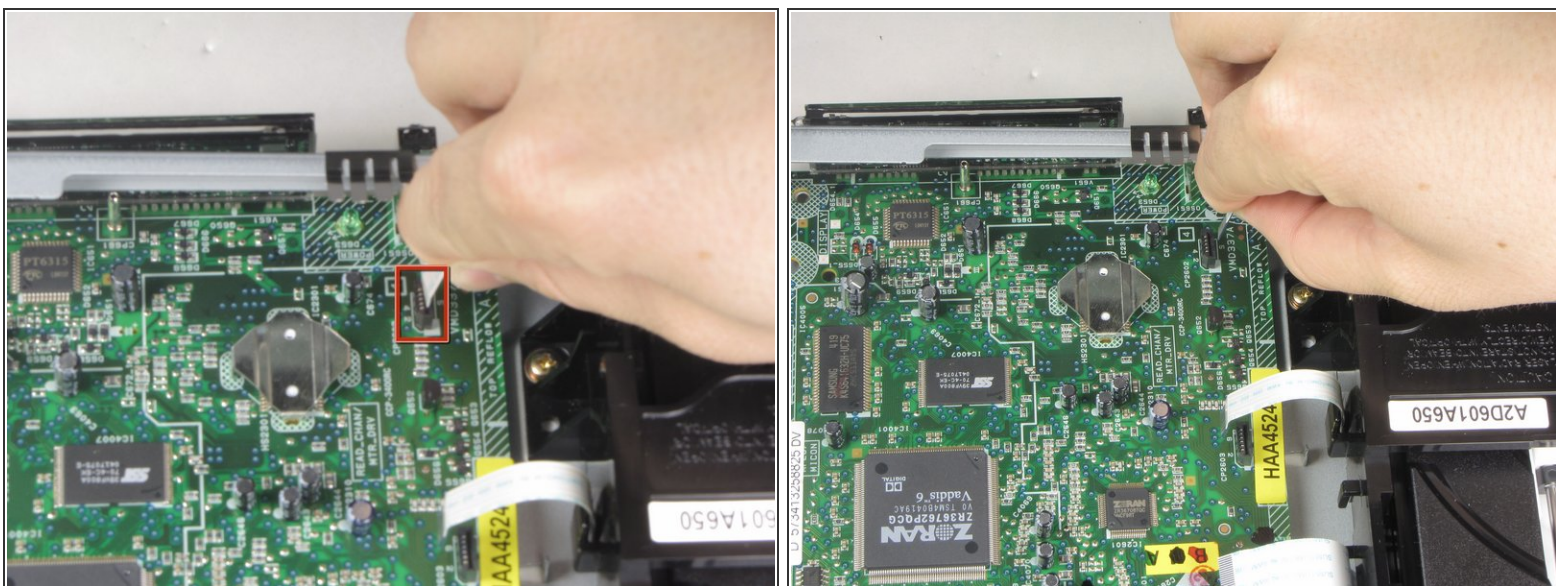
- Remove the first of three ribbon cables on left hand side of disc drive by pulling vertically.

Step 8



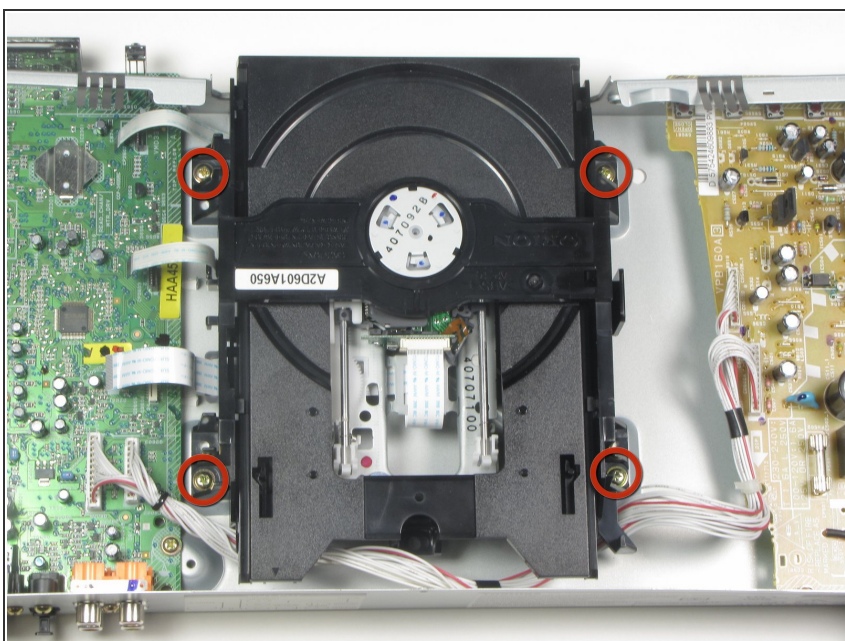
- Remove the second of three ribbon cables on left hand side of disc drive by pulling vertically.

Step 9



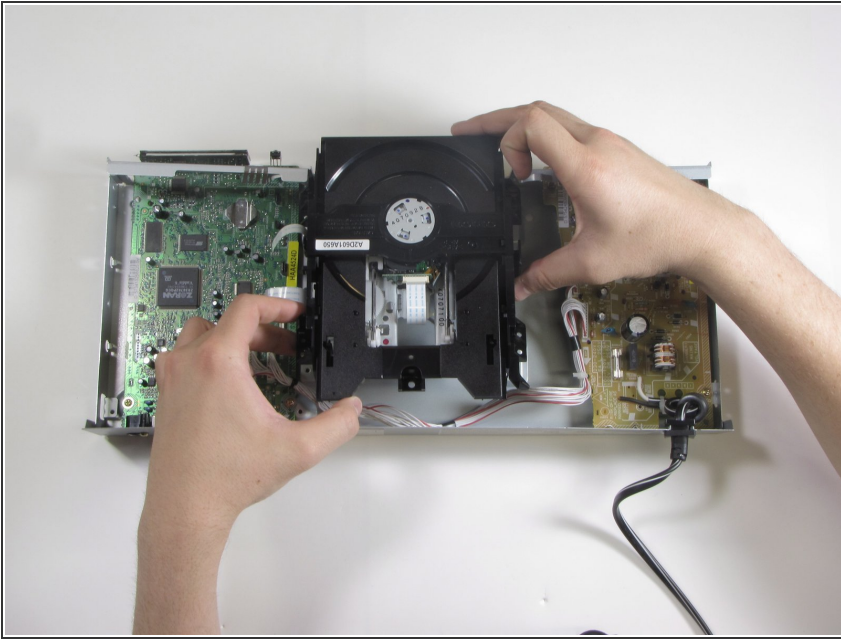
- Remove the third of three ribbon cables on left hand side of disc drive by pulling vertically.

Step 10



- Remove the four screws holding the disc drive in place using a #0 Phillips screwdriver.

Step 11



- Lift disc drive vertically to remove.

To reassemble your device, follow these instructions in reverse order.