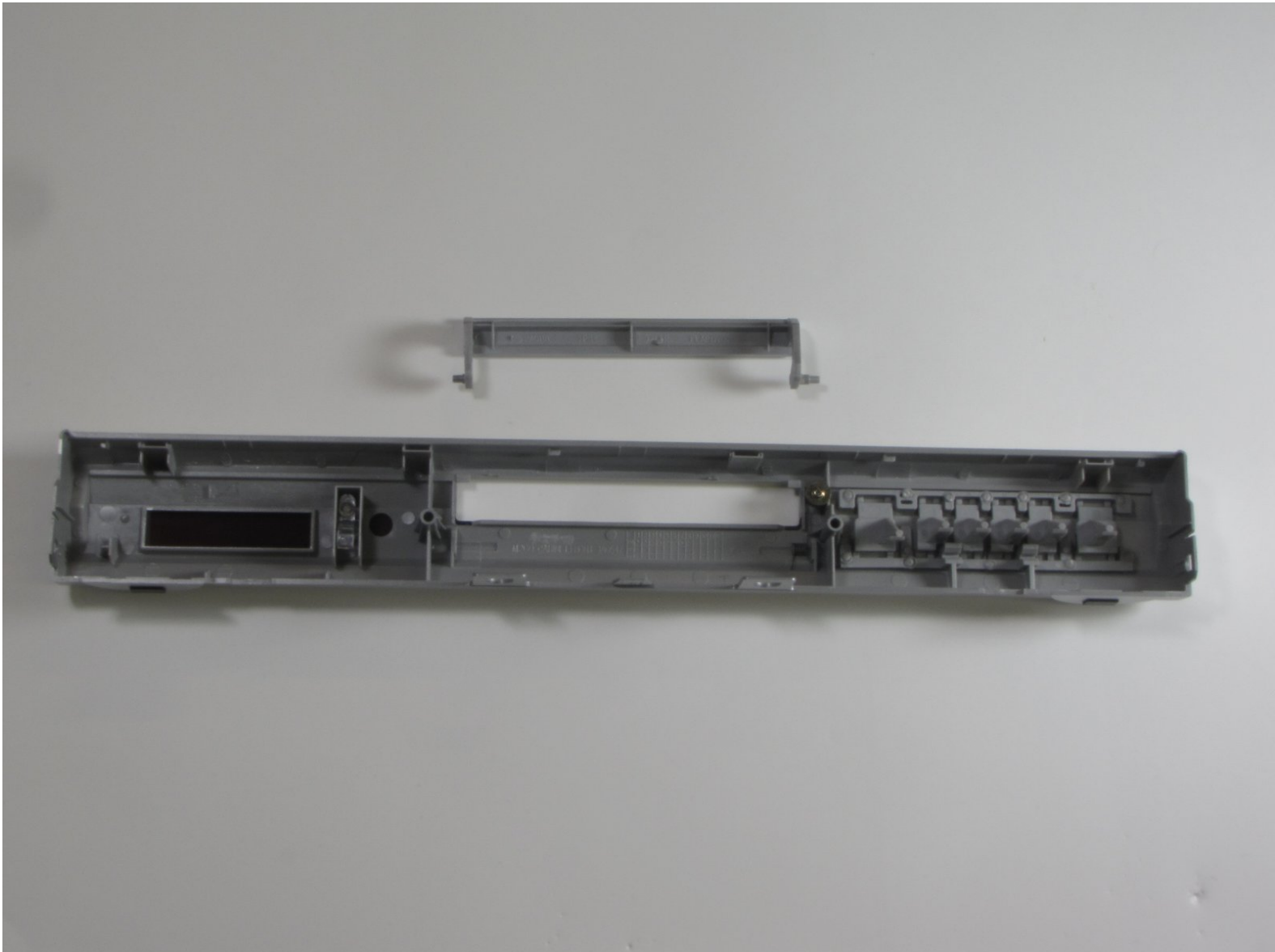




Toshiba SD-K740 Front Flap Tray Door Replacement

This is a guide to remove the Disc Drive Front Flap of the Toshiba SD-K740 DVD player.

Written By: John Lokker



INTRODUCTION

This guide gives instructions on how to remove the disc drive front flap of the Toshiba SD-K740 DVD player.



TOOLS:

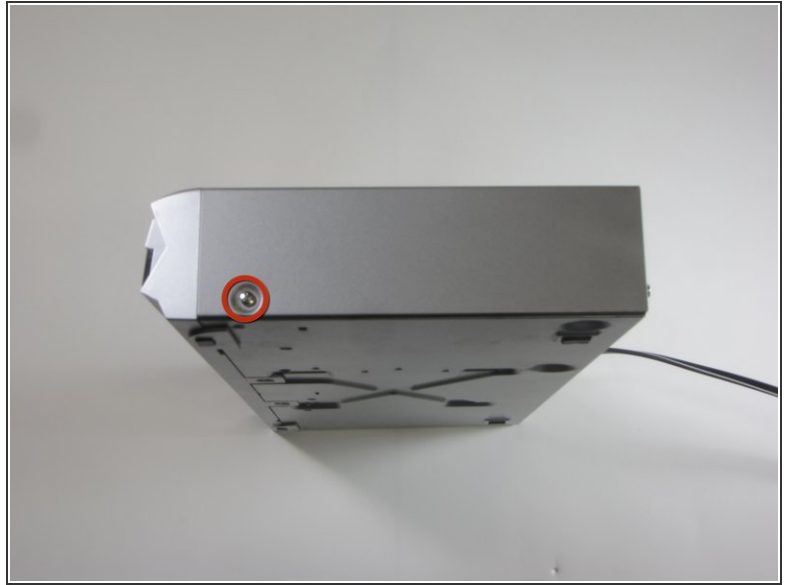
- [Phillips #2 Screwdriver](#) (1)
-

Step 1 — Top Panel



- ⚠ Make sure the DVD player is unplugged before beginning.
- Remove the three .303 inch screws from the back panel using a #0 Phillips head screwdriver.

Step 2



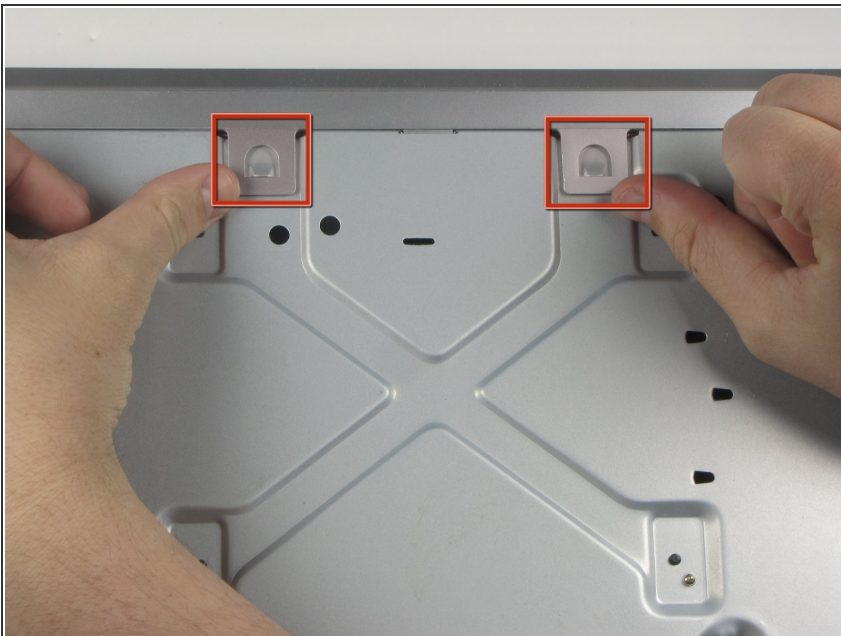
- i* Turn the DVD player on its side.
 - Remove the .303 inch screw.
- i* Now flip the DVD player onto its other side.
 - Remove the .303 inch screw from this side.

Step 3



- ① Flip the DVD player over onto its front face.
- Remove the back panel by lifting up and pulling it towards yourself.

Step 4 — Front Panel



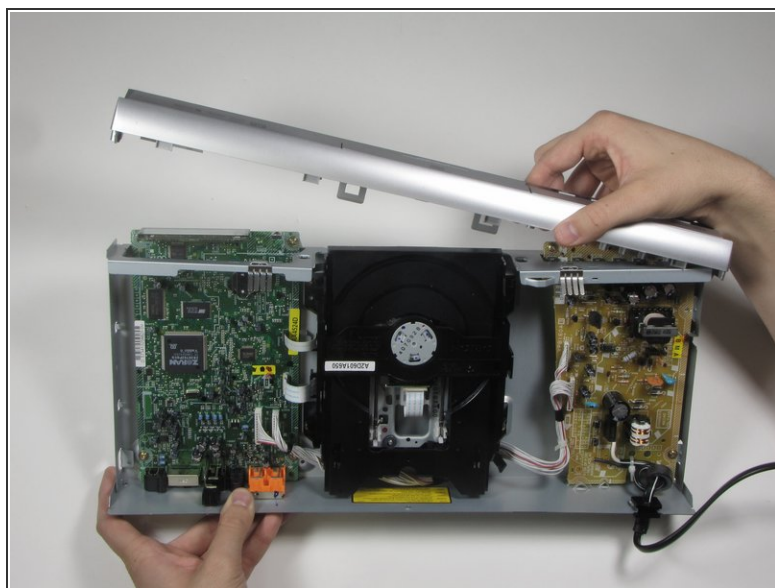
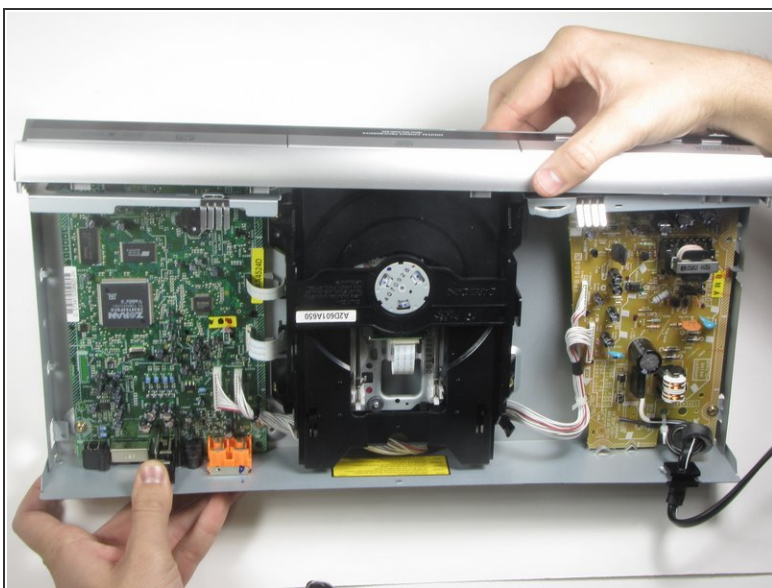
- ① Flip the DVD player so its top is sitting on your working surface.
- Lift and push away each of the two tabs located in the middle of the player.
- ⚠ The front panel will not come off during this step, so do not force it.

Step 5



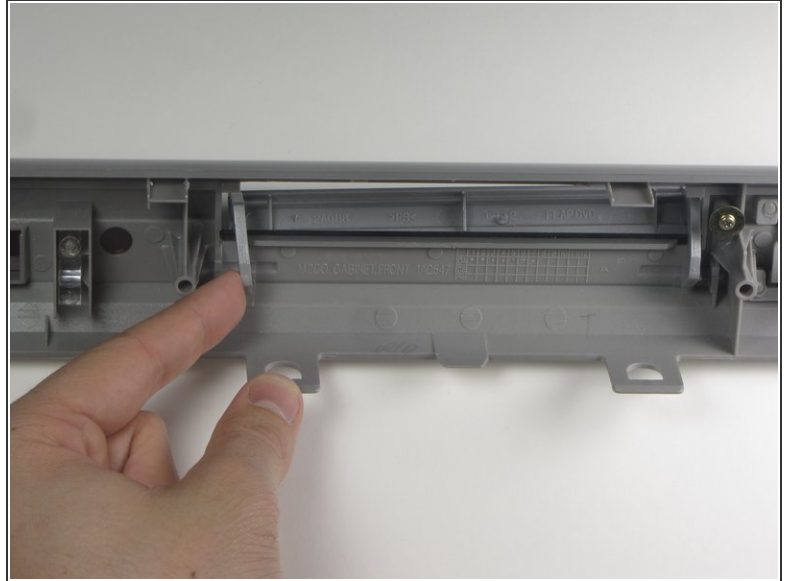
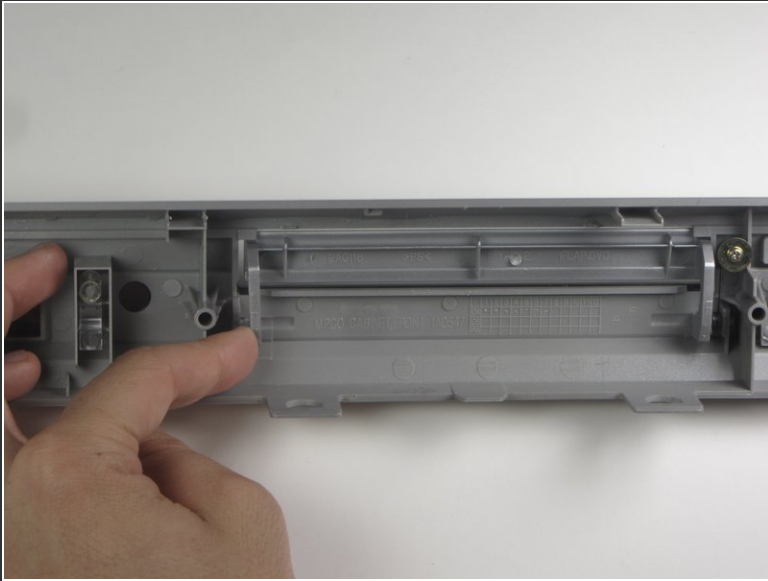
- ❗ Flip the DVD player on its side.
- Lift and slide forward a single tab on the side.
- ⚠ The front panel will not come off during this step, so do not force it.

Step 6



- Grasp the front panel and pull forward and to your right to remove.

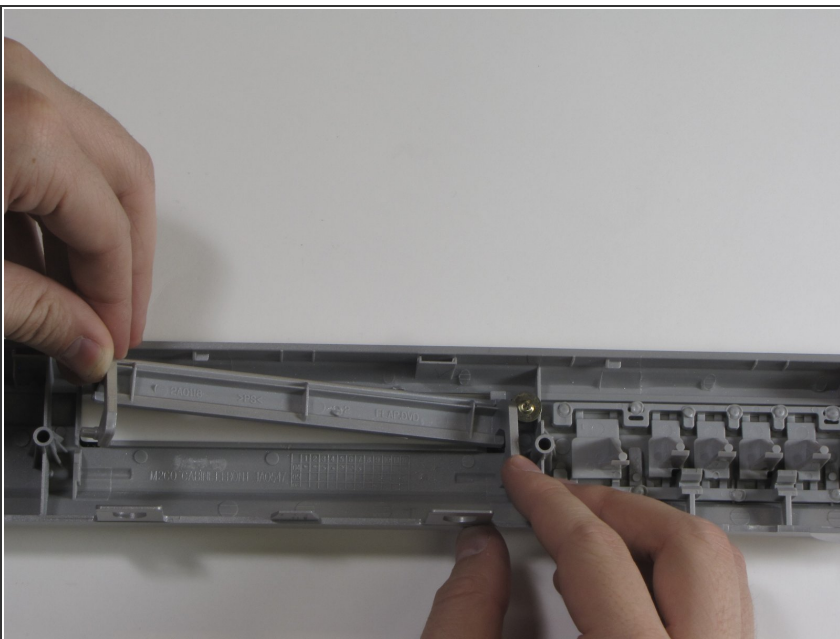
Step 7 — Front Flap Tray Door



- On back side of front panel very carefully apply pressure to the left hand side of the flap hinge.

⚠ There is just enough tolerance in the plastic to allow removal, be careful of brittle plastic.

Step 8

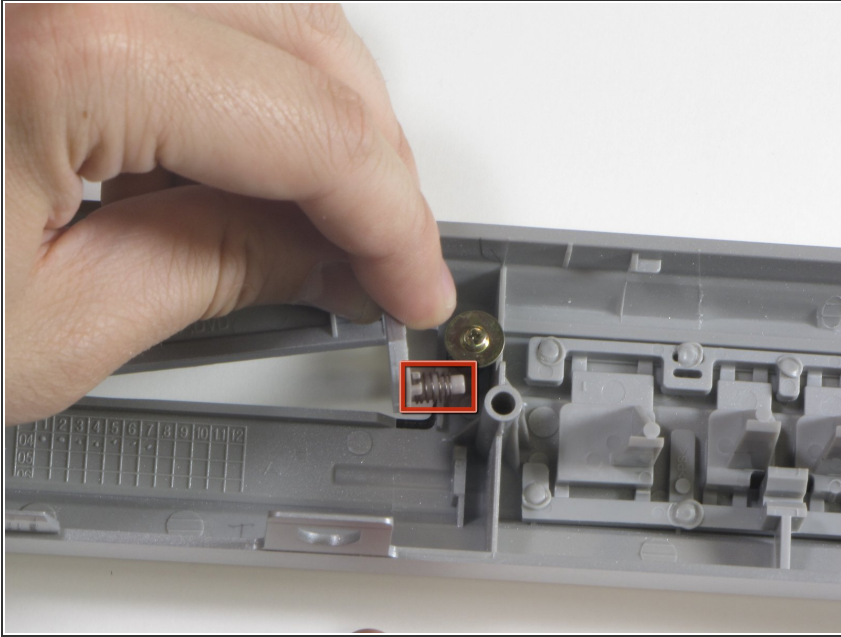


- Once the peg is free from the left restraint, carefully remove the left part of the flap.
- Carefully remove the right peg from the restraint.

⚠ Do not pull away from the front panel because the spring is still attached.

⚠ Do not force the plastic.

Step 9



- Remove the spring from the end of the right peg by pulling the door away from the spring.
- ⚠ Do not pull away from the front panel until the spring has been removed from the flap.

To reassemble your device, follow these instructions in reverse order.