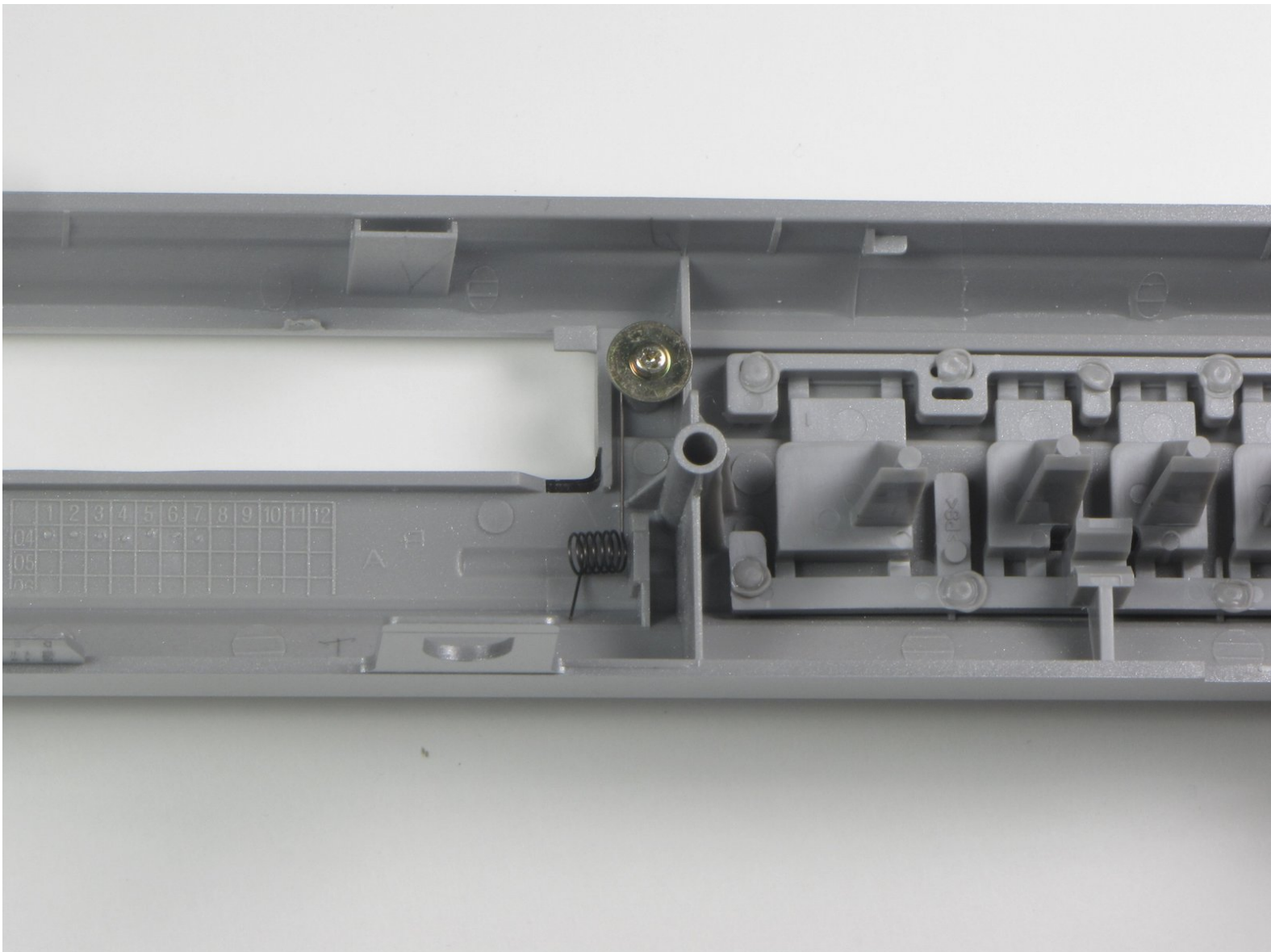




Toshiba SD-K740 Front Flap Tray Door Spring Replacement

This is a guide to remove the spring connected to the disc drive front flap of the Toshiba SD-K740 DVD player.

Written By: John Lokker



INTRODUCTION

This guide gives instructions on how to remove the spring connected to the disc drive front flap of the Toshiba SD-K740 DVD player.



TOOLS:

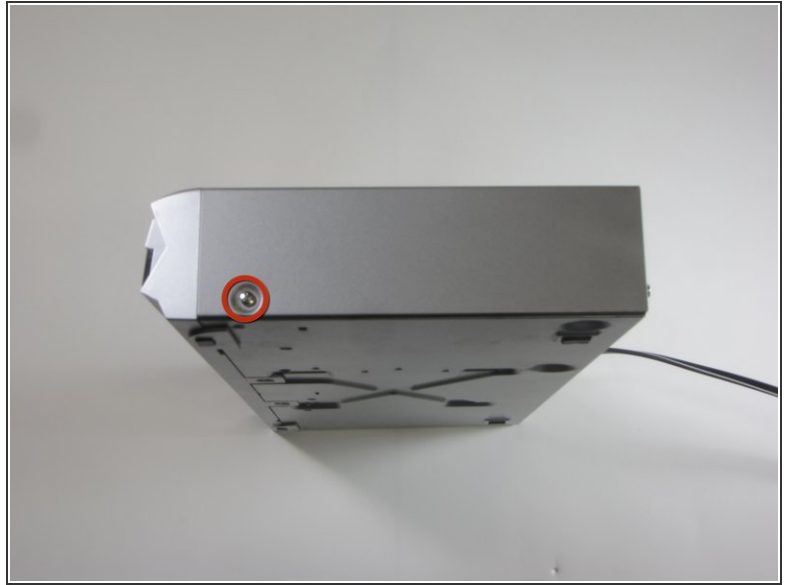
- [Phillips #2 Screwdriver](#) (1)
-

Step 1 — Top Panel



- ⚠ Make sure the DVD player is unplugged before beginning.
- Remove the three .303 inch screws from the back panel using a #0 Phillips head screwdriver.

Step 2



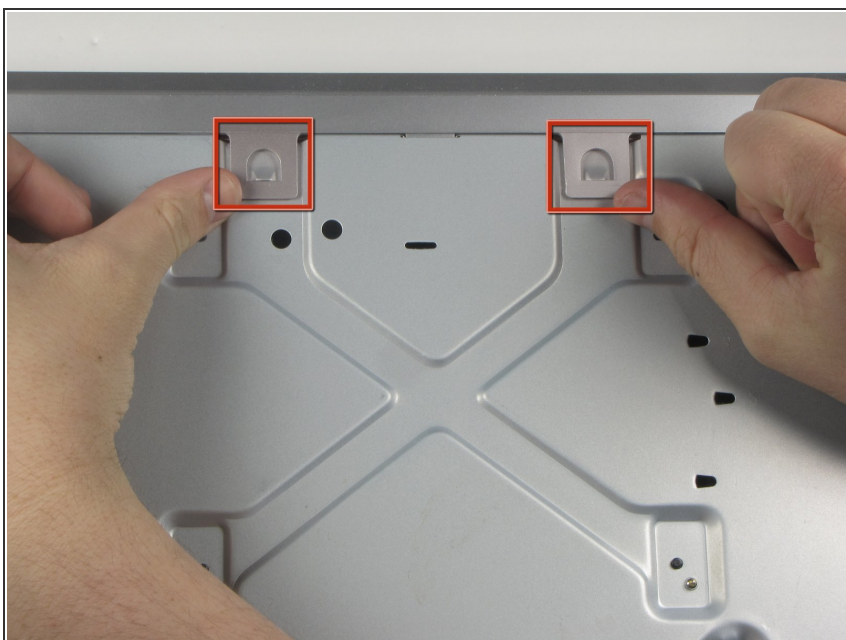
- i* Turn the DVD player on its side.
 - Remove the .303 inch screw.
- i* Now flip the DVD player onto its other side.
 - Remove the .303 inch screw from this side.

Step 3



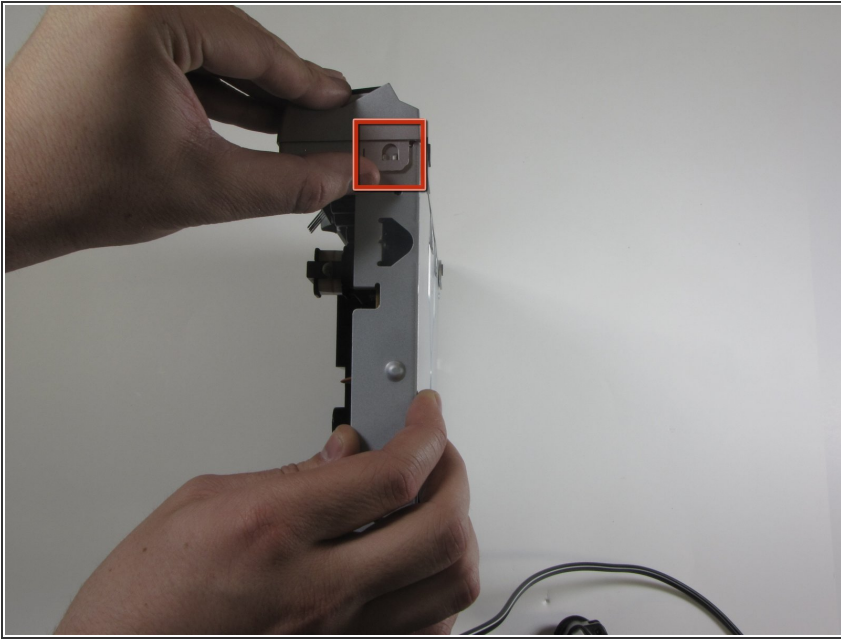
- ❗ Flip the DVD player over onto its front face.
- Remove the back panel by lifting up and pulling it towards yourself.

Step 4 — Front Panel



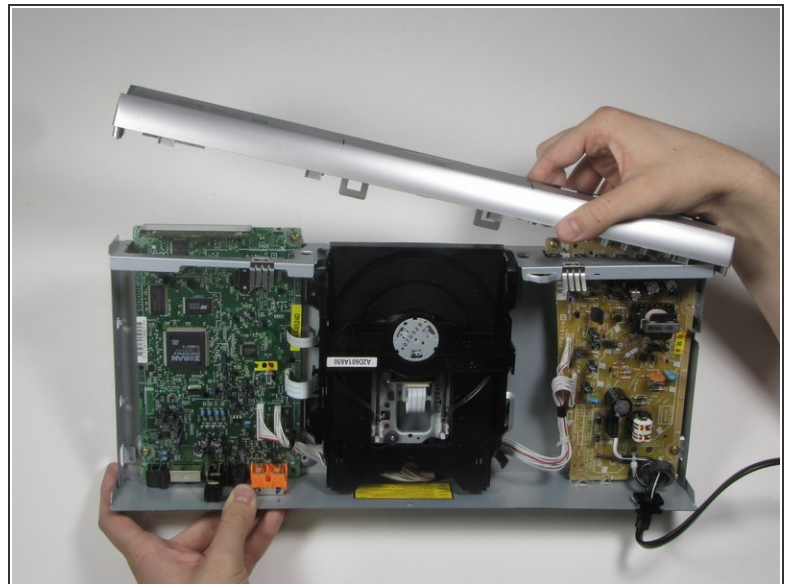
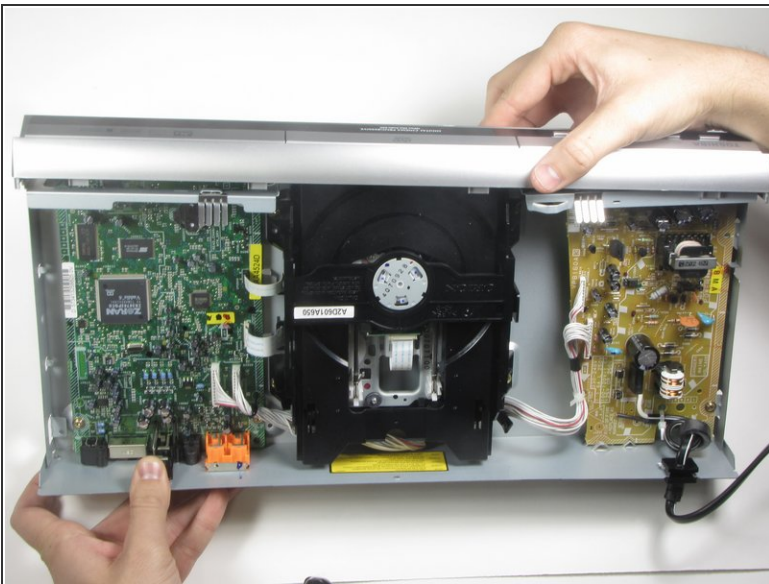
- ❗ Flip the DVD player so its top is sitting on your working surface.
- Lift and push away each of the two tabs located in the middle of the player.
- ⚠ The front panel will not come off during this step, so do not force it.

Step 5



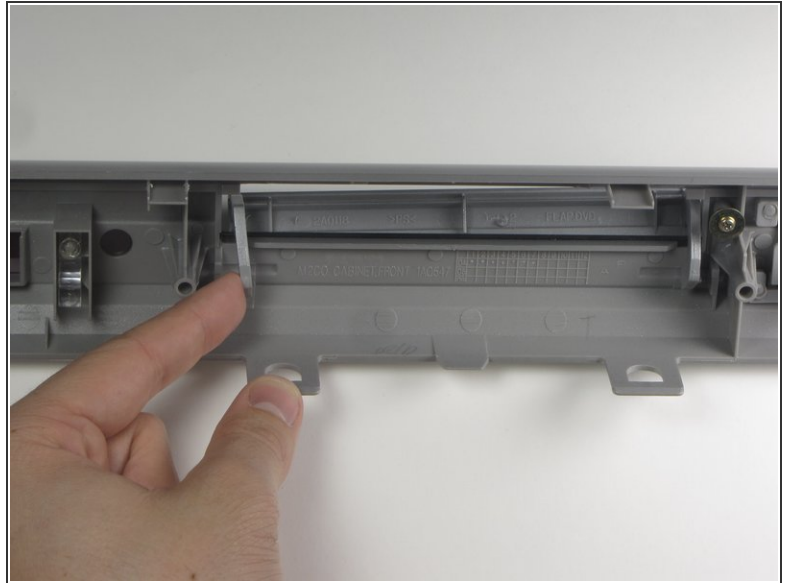
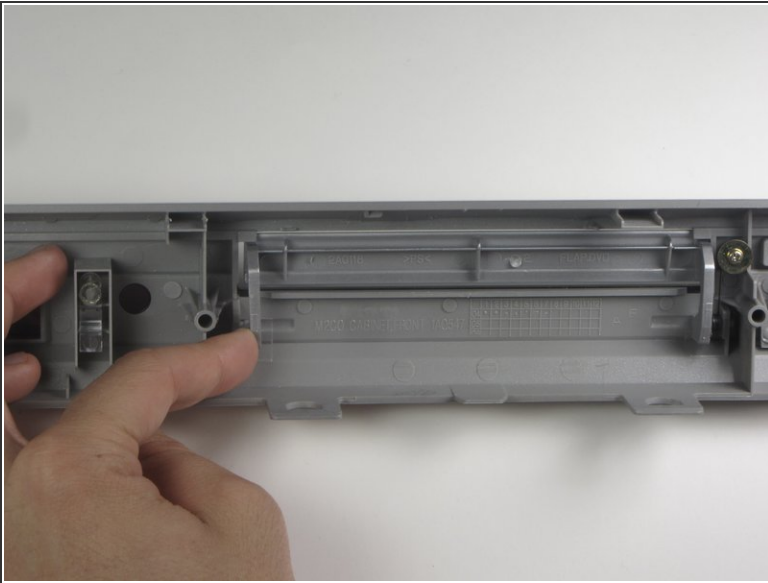
- ❗ Flip the DVD player on its side.
- Lift and slide forward a single tab on the side.
- ⚠ The front panel will not come off during this step, so do not force it.

Step 6



- Grasp the front panel and pull forward and to your right to remove.

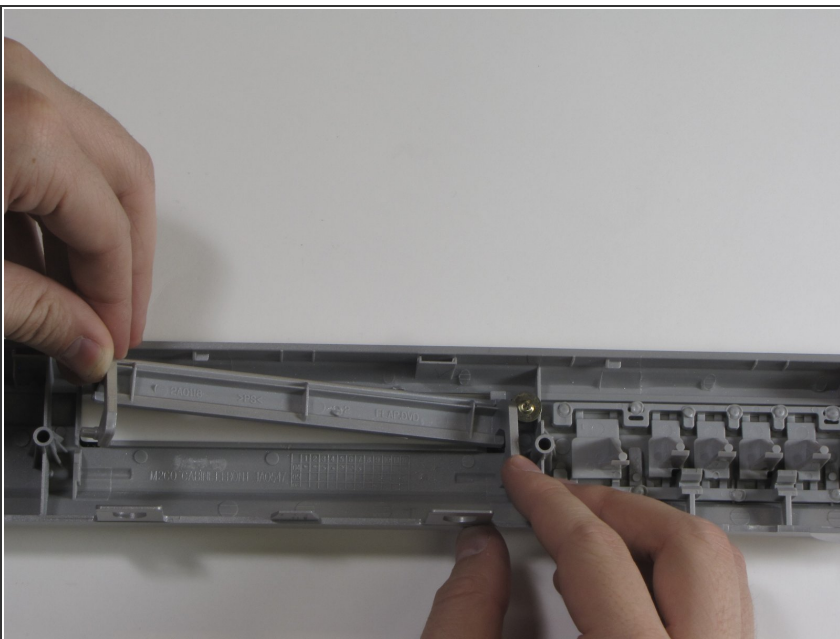
Step 7 — Front Flap Tray Door



- On back side of front panel very carefully apply pressure to the left hand side of the flap hinge.

⚠ There is just enough tolerance in the plastic to allow removal, be careful of brittle plastic.

Step 8

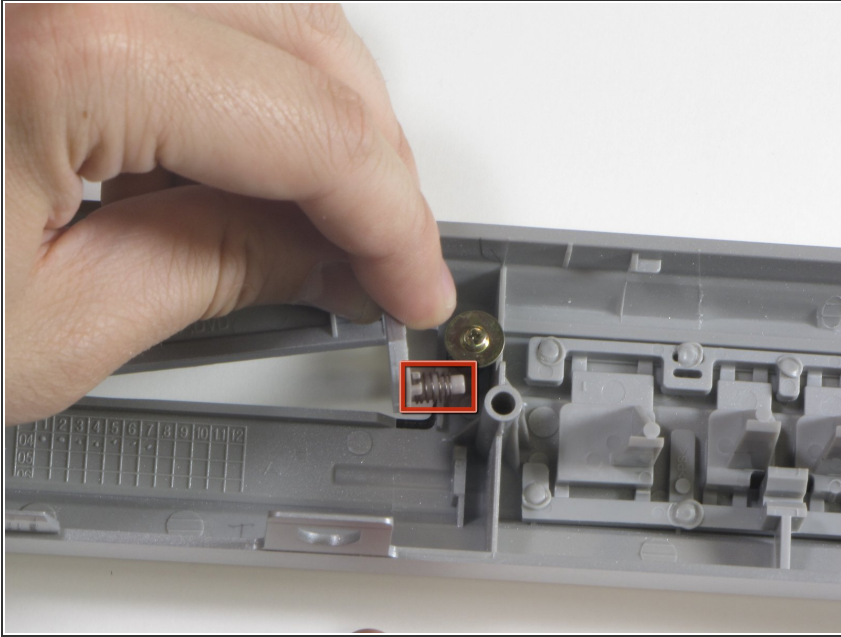


- Once the peg is free from the left restraint, carefully remove the left part of the flap.
- Carefully remove the right peg from the restraint.


⚠ Do not pull away from the front panel because the spring is still attached.

⚠ Do not force the plastic.

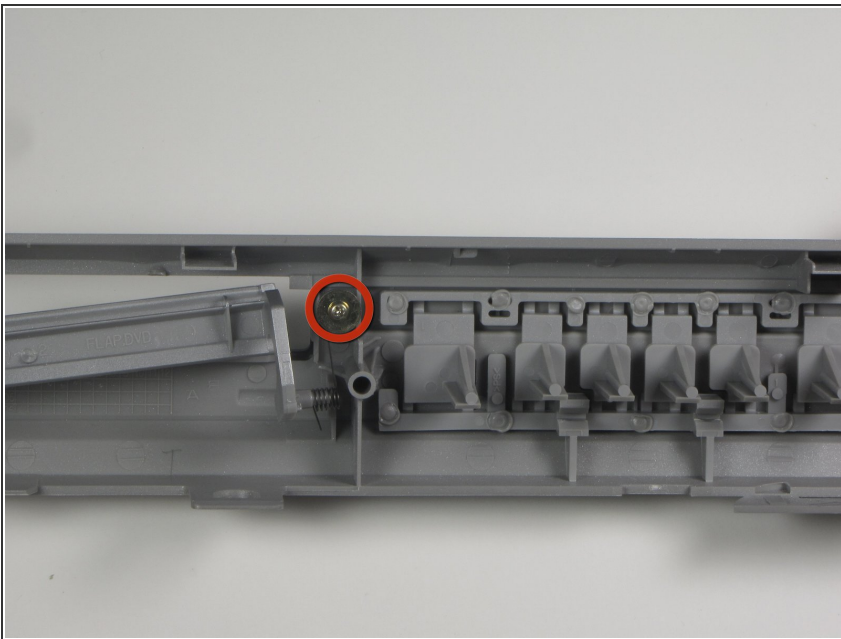
Step 9



- Remove the spring from the end of the right peg by pulling the door away from the spring.

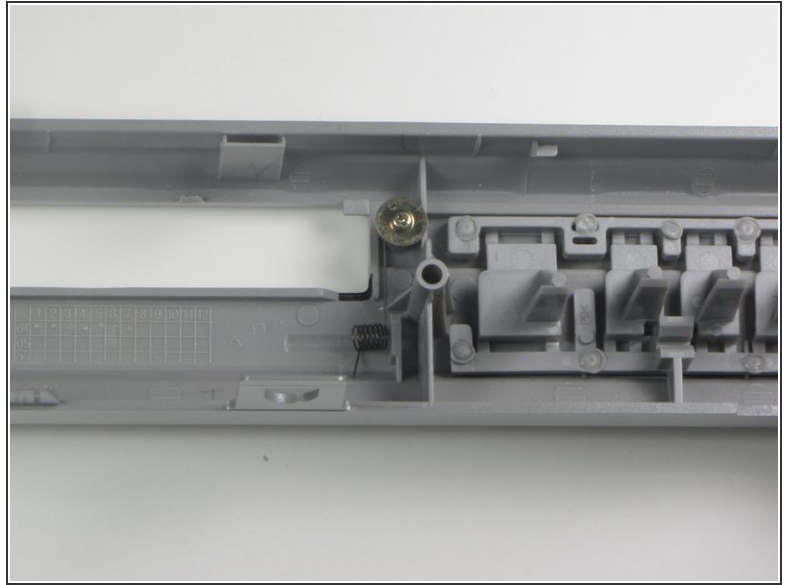
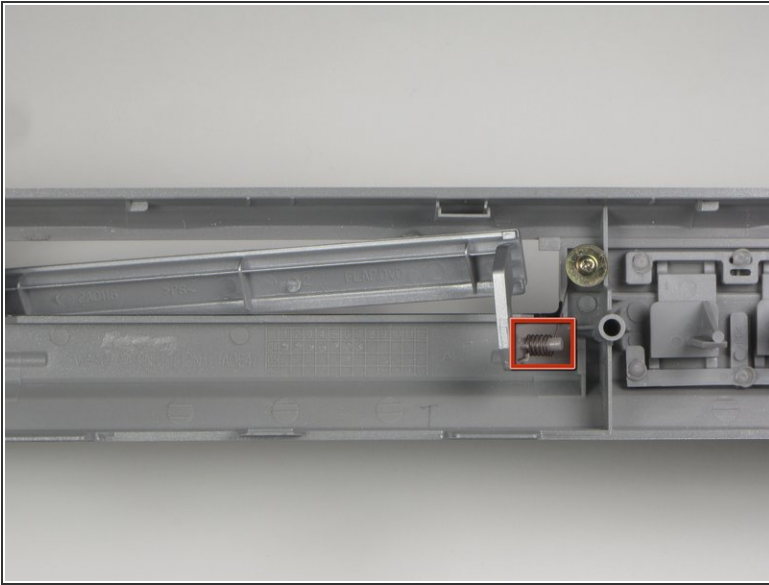
 Do not pull away from the front panel until the spring has been removed from the flap.

Step 10 — Front Flap Tray Door Spring



- Remove the .384 inch screw holding the spring to front panel.

Step 11



- Slide the spring off of the underlying peg.

To reassemble your device, follow these instructions in reverse order.