



# Toshiba SD-K740 Front Panel Replacement

This is a guide to remove the front panel of the Toshiba SD-K740 DVD player.

Written By: Joe Murphy



---

## INTRODUCTION

This guide gives instructions on how to remove the front panel of the Toshiba SD-K740 DVD player, a necessary step to access all parts for repair/replacement.



### TOOLS:

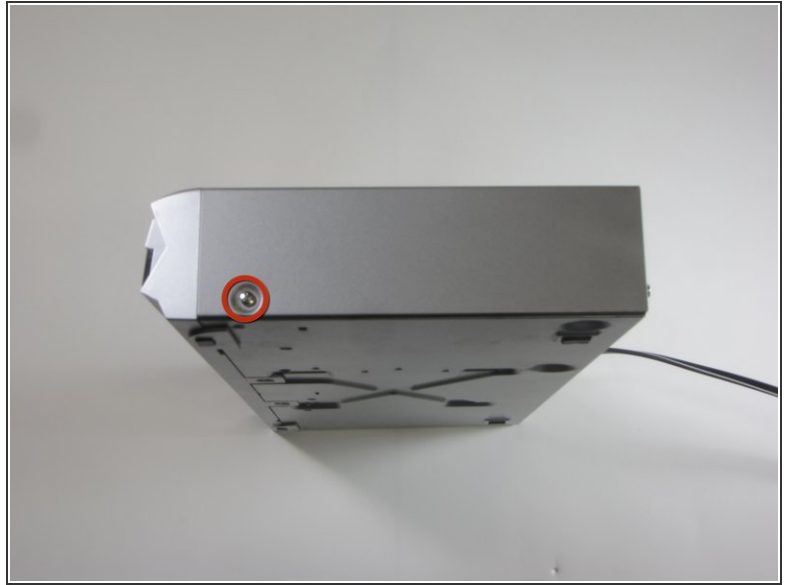
- [Phillips #2 Screwdriver](#) (1)
-

## Step 1 — Top Panel



- ⚠ Make sure the DVD player is unplugged before beginning.
- Remove the three .303 inch screws from the back panel using a #0 Phillips head screwdriver.

## Step 2



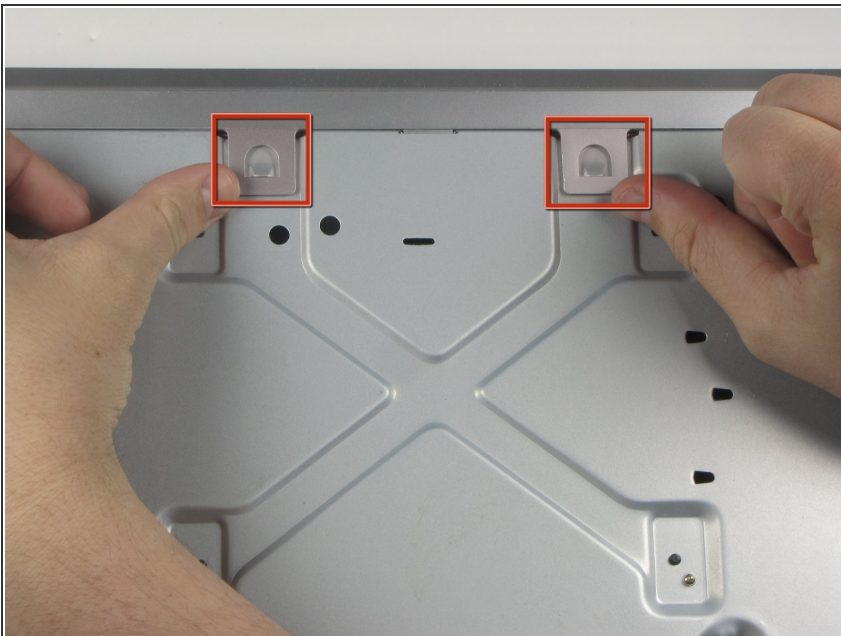
- ⓘ Turn the DVD player on its side.
  - Remove the .303 inch screw.
- ⓘ Now flip the DVD player onto its other side.
  - Remove the .303 inch screw from this side.

### Step 3



- ① Flip the DVD player over onto its front face.
- Remove the back panel by lifting up and pulling it towards yourself.

### Step 4 — Front Panel



- ① Flip the DVD player so its top is sitting on your working surface.
- Lift and push away each of the two tabs located in the middle of the player.
- ⚠ The front panel will not come off during this step, so do not force it.

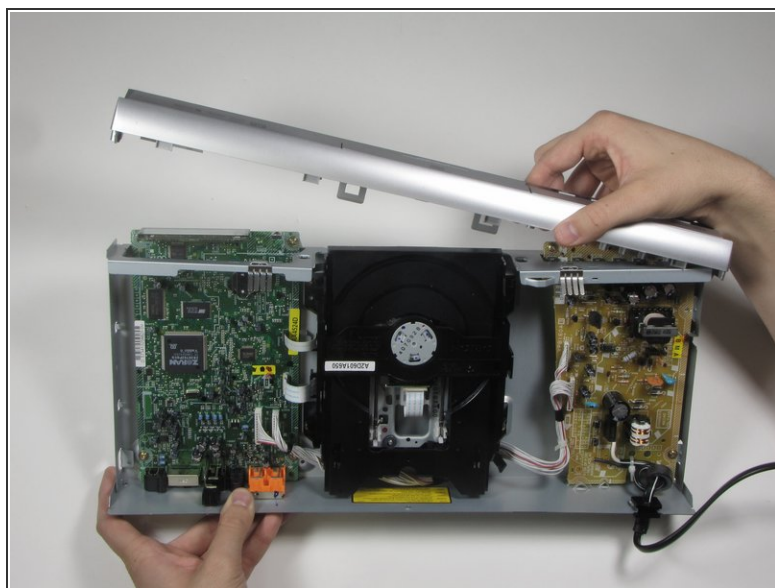
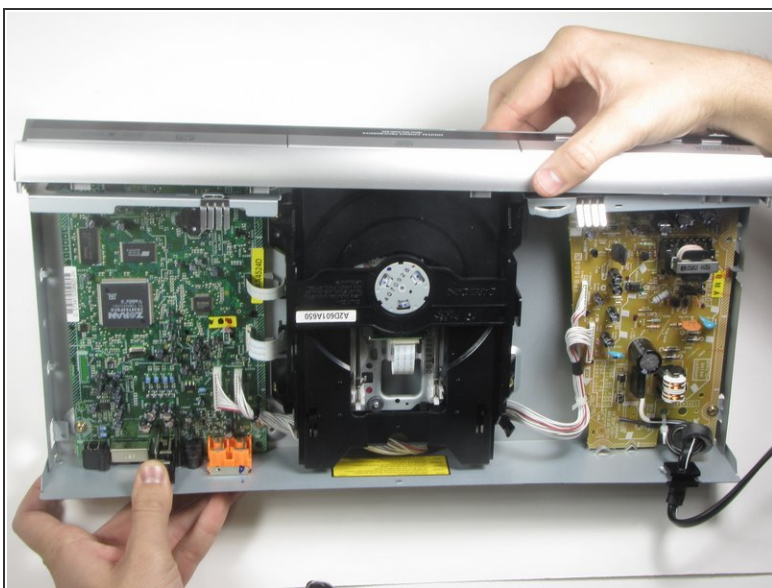


## Step 5



- ❗ Flip the DVD player on its side.
- Lift and slide forward a single tab on the side.
- ⚠ The front panel will not come off during this step, so do not force it.

## Step 6



- Grasp the front panel and pull forward and to your right to remove.

To reassemble your device, follow these instructions in reverse order.