



Toshiba Satellite 1415-S105 Optical Drive Replacement

Removal of the optical drive in a Toshiba Satellite 1451

Written By: Kiril Lange



INTRODUCTION

An optical drive allows your computer to read and write to media such as CDs and DVDs. Upgrading or replacing your drive may be necessary to get the most out of your laptop.



TOOLS:

- [Phillips #0 Screwdriver](#) (1)
 - [iFixit Opening Tools](#) (1)
 - [Spudger](#) (1)
-

Step 1 — Battery



- The battery is located on the front right corner of the laptop.

Step 2



- With one finger on the raised grip, slide the latch towards the front of the laptop.

Step 3



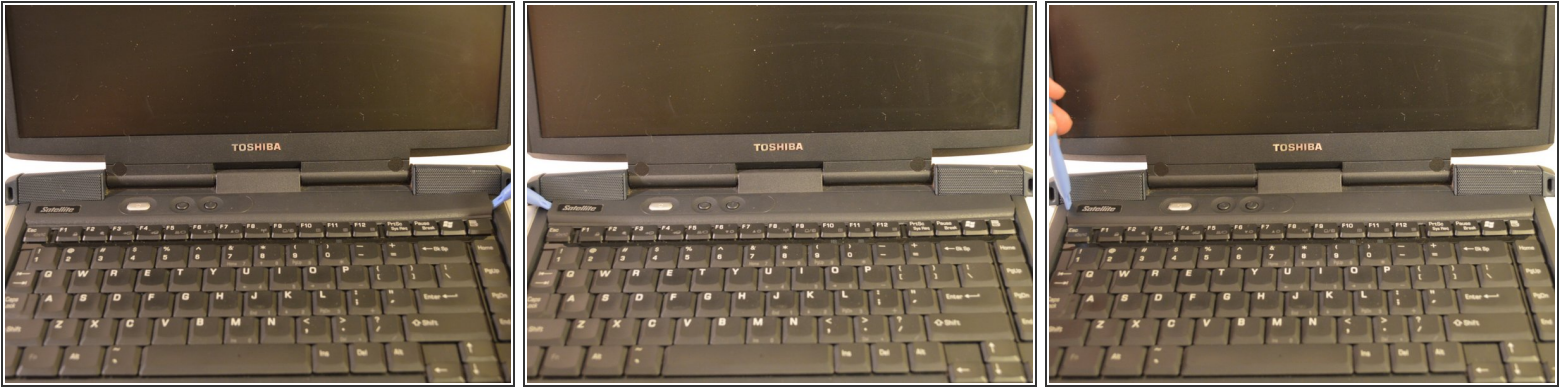
- Pull the battery out towards the side.

Step 4



- Lift the battery straight up, out of the computer.

Step 5 — Keyboard



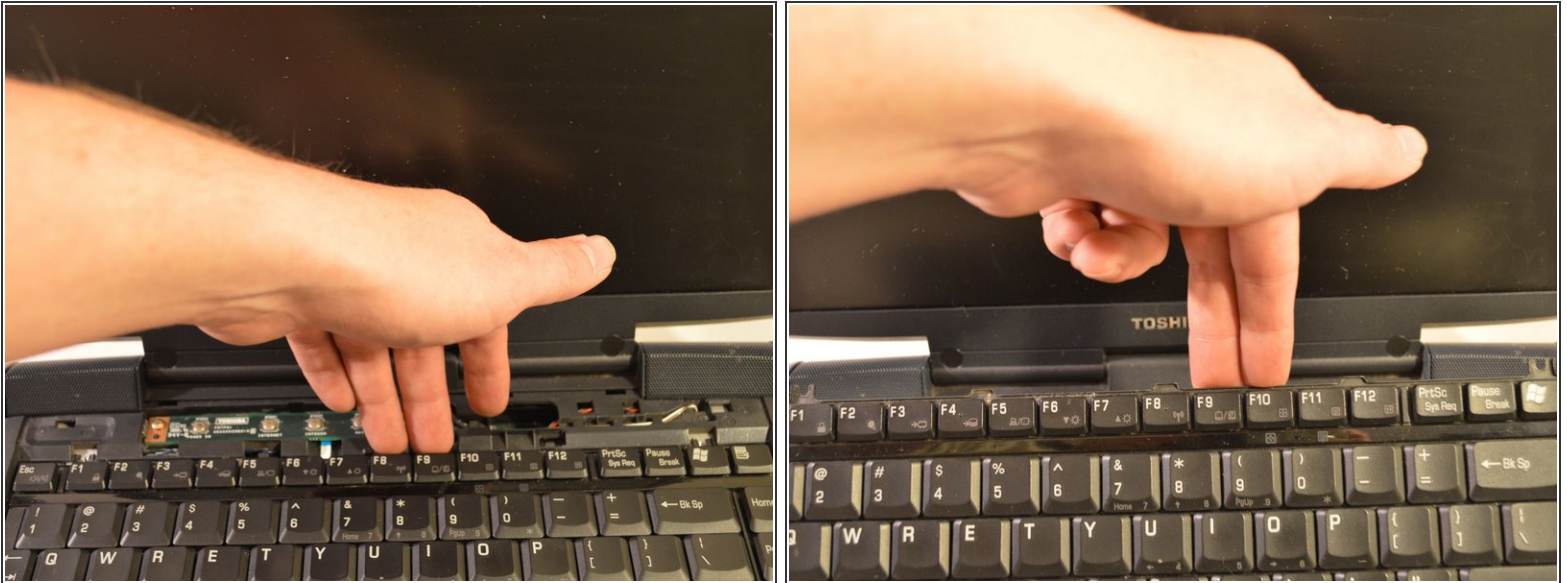
- Using a set of case opening tools, pry open the left and right sides of the black plastic strip above the keyboard.
- Fully detach the strip.

Step 6



- Unscrew the two screws near the top of the keyboard.

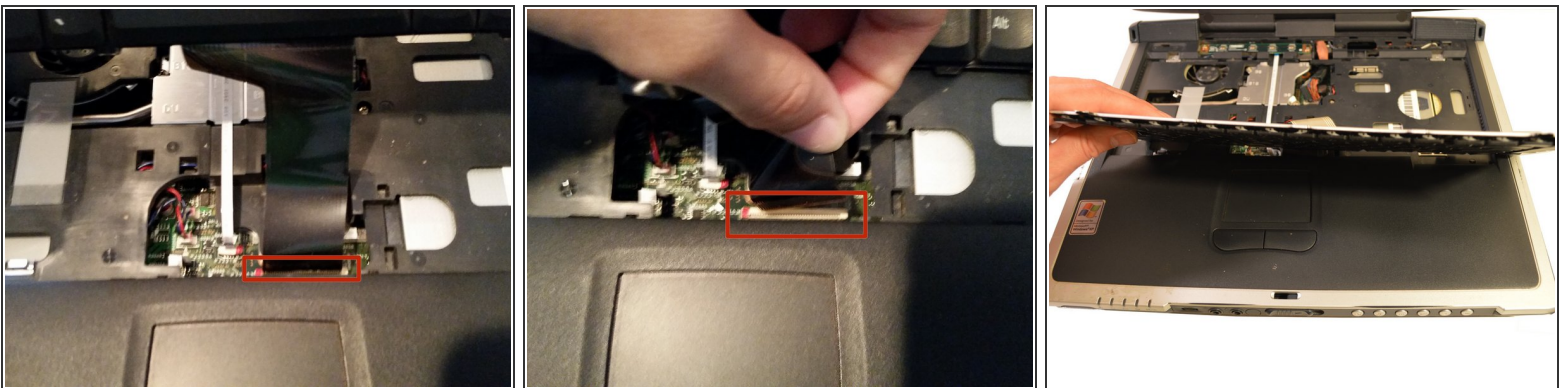
Step 7



- Lift the keyboard by holding the middle top of the keyboard.

⚠ The keyboard is still connected by a ribbon cable to the motherboard.

Step 8



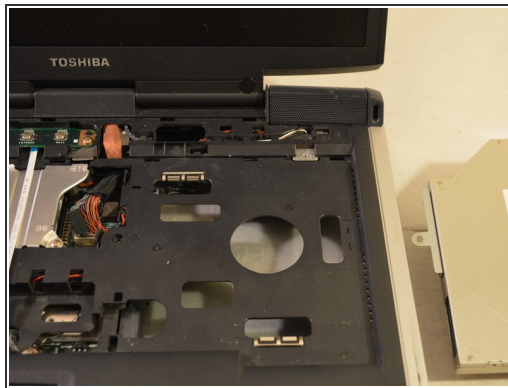
- Carefully pull upwards on the ribbon cable to detach.
- Remove keyboard.

Step 9 — Optical Drive



- Unscrew the screw located on the left side of the optical drive near the heat sink cover in the middle of the laptop.

Step 10



- Using spudger, push the optical drive out to the right.

To reassemble your device, follow these instructions in reverse order.