



Toshiba Satellite 1415-S105 RAM Replacement

Toshiba Satellite 1451-S105 RAM replacement or upgrade.

Written By: Kiril Lange



INTRODUCTION

Upgrading the RAM is a straightforward process that can significantly improve performance.

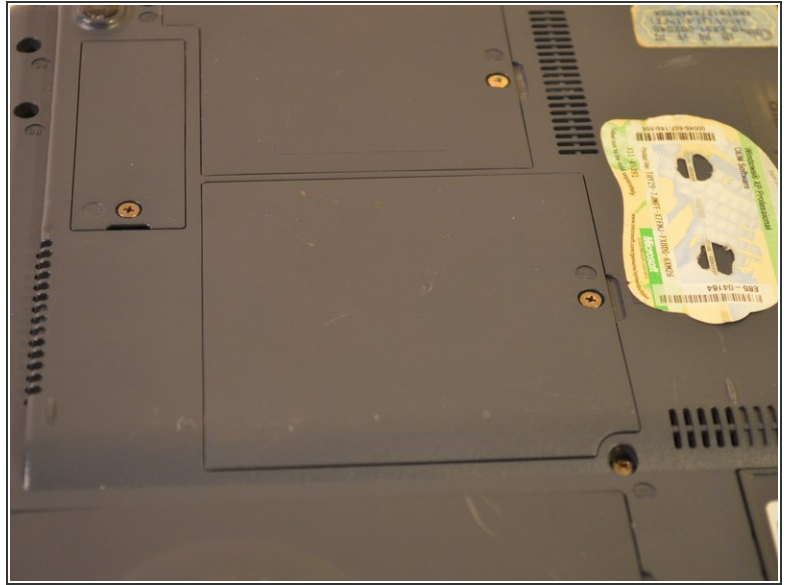
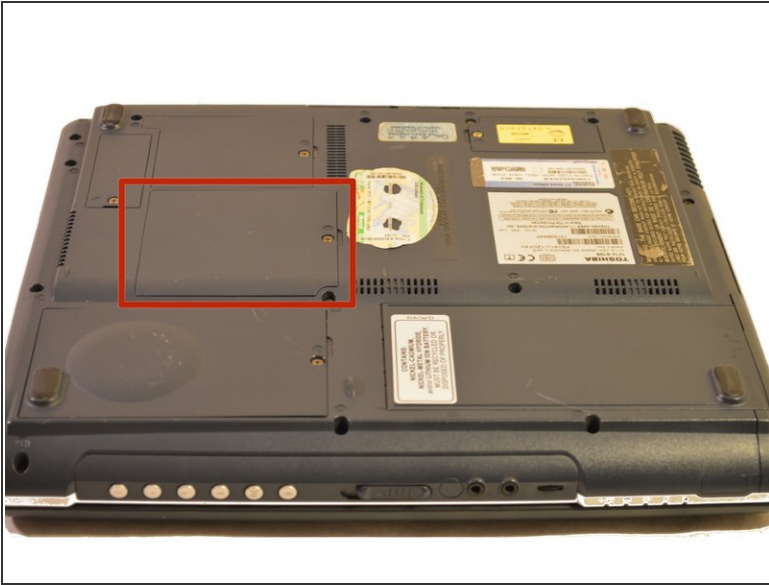
Two RAM slots allow up to 512MB of PC1600 DDR SDRAM.



TOOLS:

- [Phillips #0 Screwdriver](#) (1)
 - [Spudger](#) (1)
-

Step 1 — Memory Cover



- The RAM access panel is located near the middle of the bottom.

Step 2



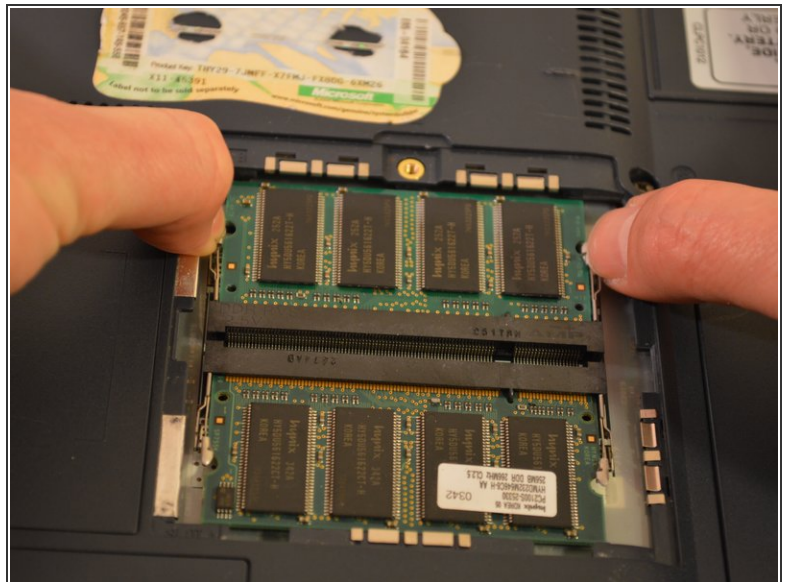
- Unscrew the single screw labeled F4 on the panel.

Step 3



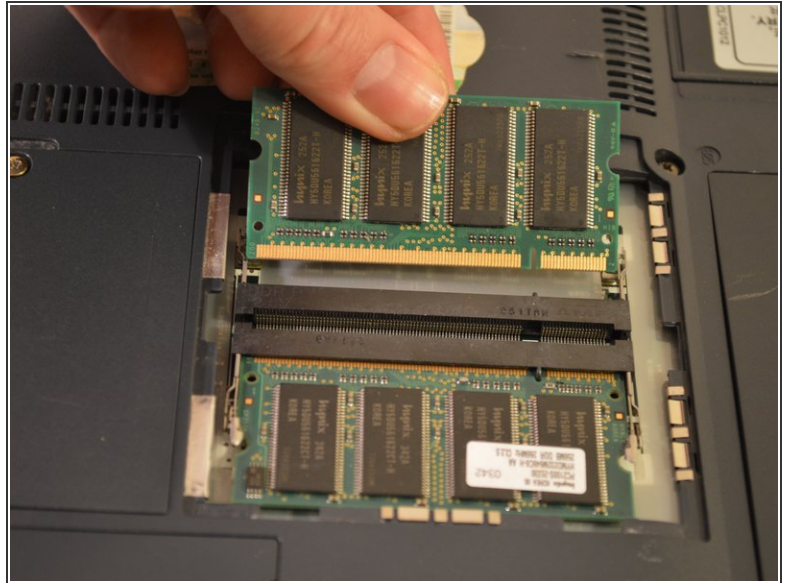
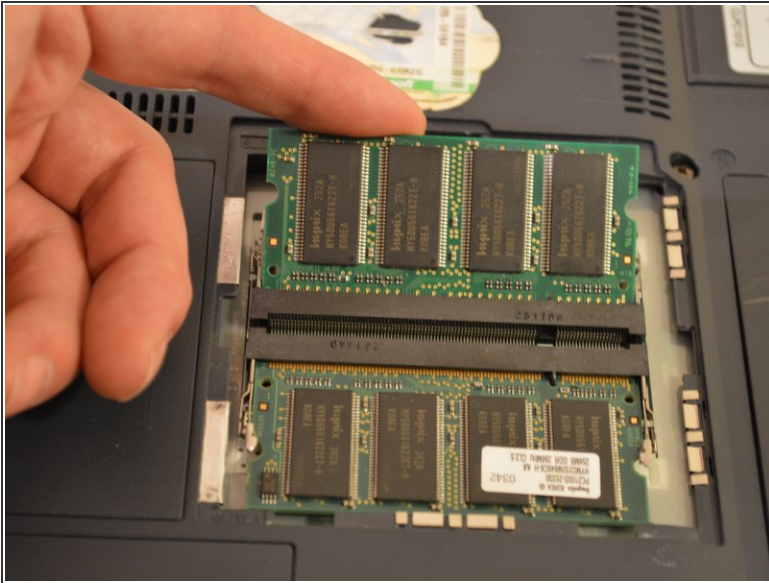
- Using a spudger, inserted into the notch under the screw hole, pry open and remove the cover.

Step 4 — RAM



- Pull outward on each pair of restraining clips to free each chip.

Step 5 — Removal



- The RAM chips can now be pulled out.
- ⓘ This laptop supports a maximum of two memory modules. The largest capacity for each is 256MB of PC1600 DDR SDRAM.

To reassemble your device, follow these instructions in reverse order.