



# Toshiba Satellite 1805-S177 TrackPad Replacement

This guide shows you how to replace the trackpad of your laptop.

Written By: Hannah





## TOOLS:

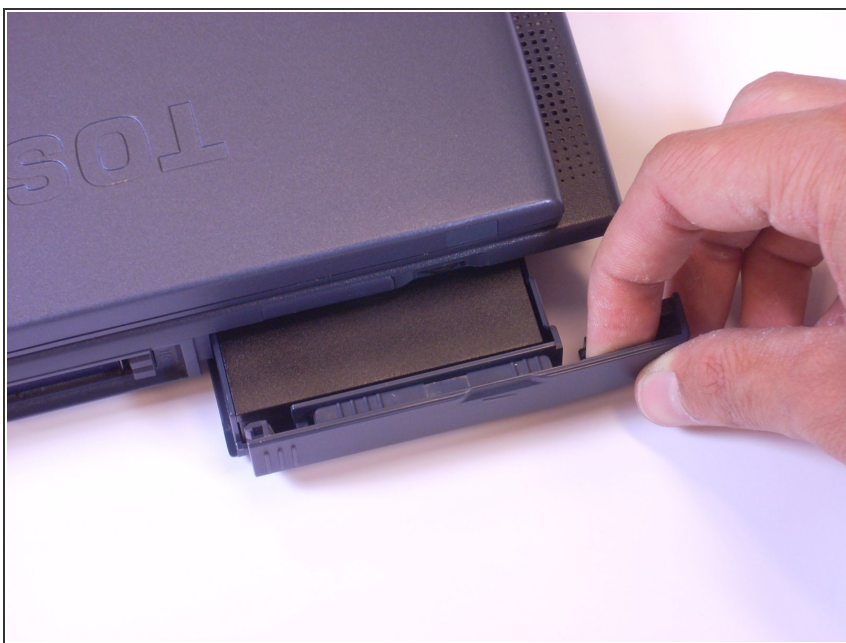
- [Flathead Screwdriver](#) (1)
- [Phillips #00 Screwdriver](#) (1)
- [Spudger](#) (1)

## Step 1 — Battery



- Placing your finger on the raised grip, push the battery casing to the right. It will slide over.

## Step 2



- Pull the battery casing gently out toward yourself, until you hear a clicking sound.
- ⓘ The battery should pull out to about 2 inches.



## Step 3



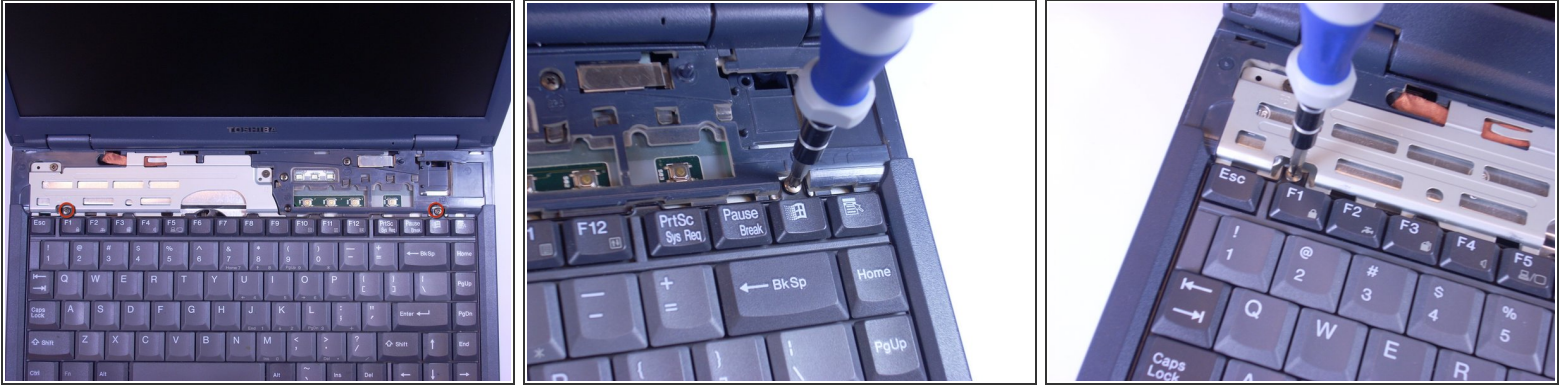
- Lift the battery casing out of the laptop.

## Step 4 — Keyboard



- Stick a spudger in one of the sides of the top panel. Lift slowly from one side to the other and it will pop off.

## Step 5



- Using an Phillips screwdriver, unscrew and remove two screws labeled B2.6.

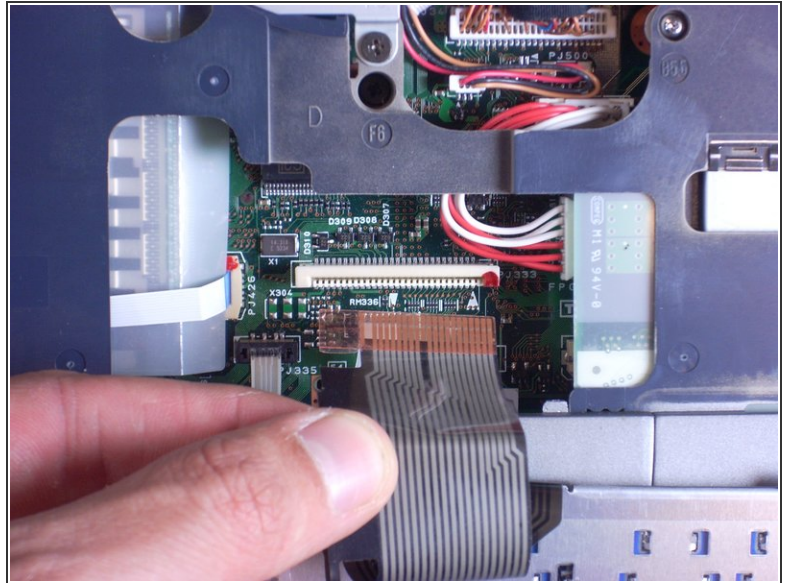
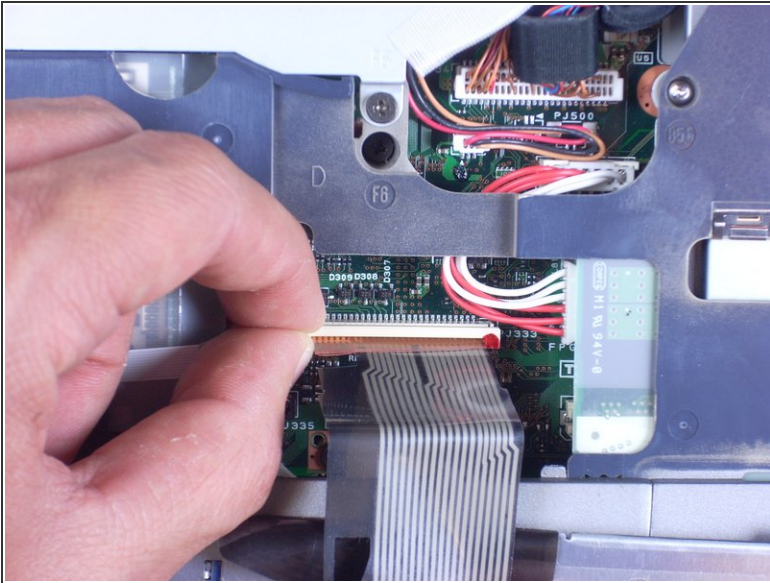
## Step 6



- Using your hands, lift keyboard up toward you, starting from the edge closest to the screen.
- ⚠ The keyboard is still connected to the laptop by a ribbon. Place the keyboard gently on top of the trackpad, keys side down.



## Step 7



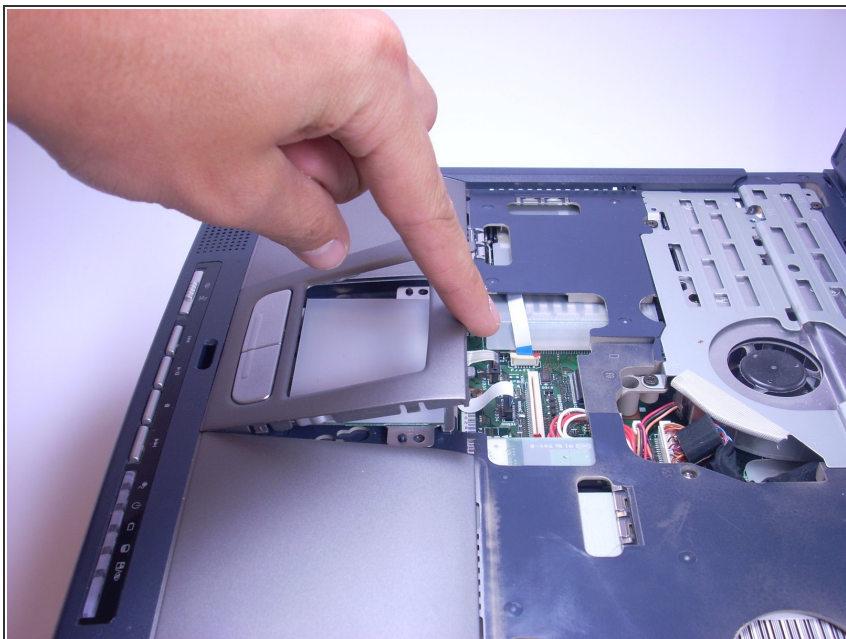
- Find the white ribbon connector (where the keyboard is still attached to the rest of the laptop).
- Slide the white ribbon connector up and lift the ribbon out of it.

## Step 8 — TrackPad



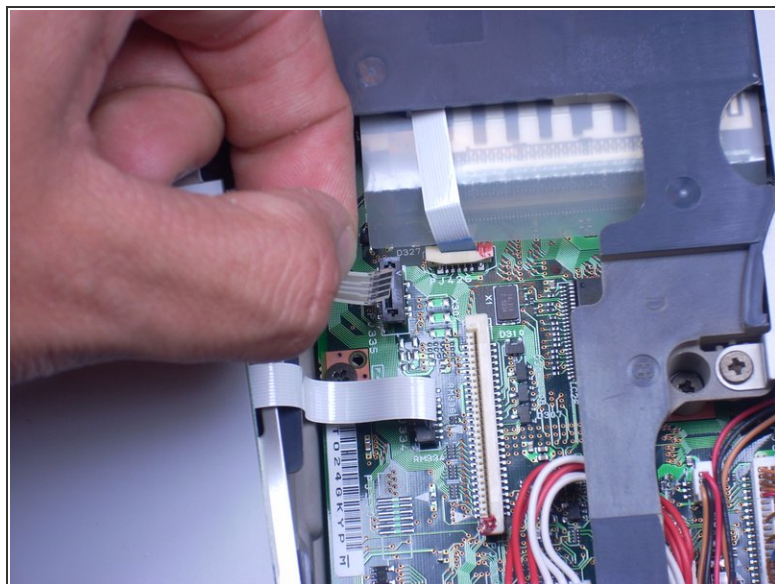
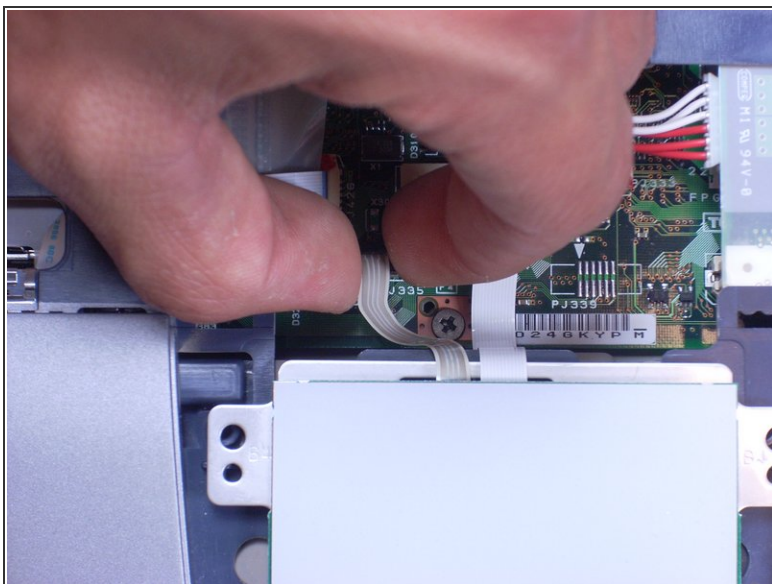
- Using a Phillips Screwdriver, unscrew and remove the one F4 screw closest to the center of the laptop.
- ⓘ This screw is underneath the battery casing, located on the bottom of the laptop directly under the trackpad.

## Step 9



- Using your finger, lift off the plastic covering the trackpad by putting your finger underneath the plastic and pulling towards you. The plastic should just pop off.

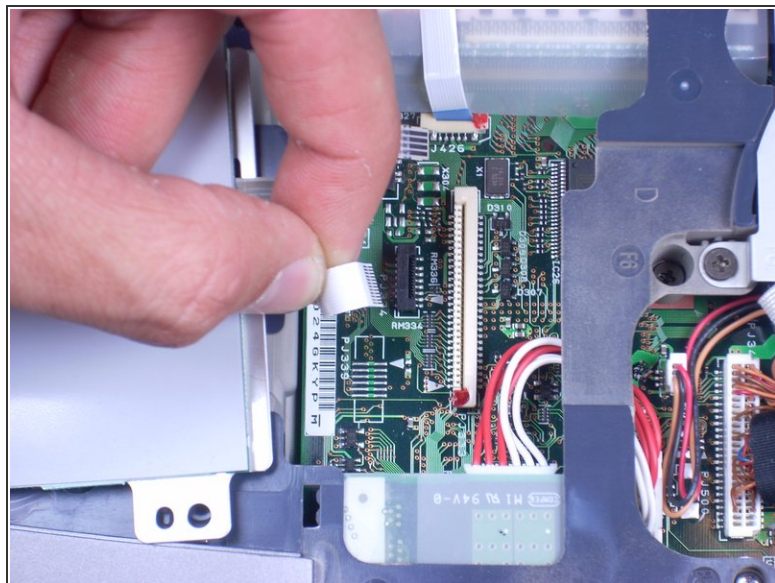
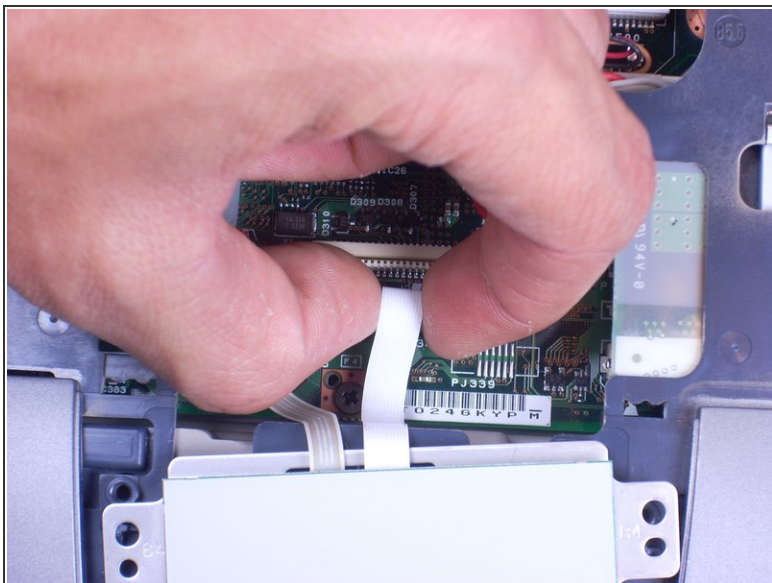
## Step 10



- Remove the left, brown ribbon by pinching the part of the ribbon connected to the computer and lifting towards you.

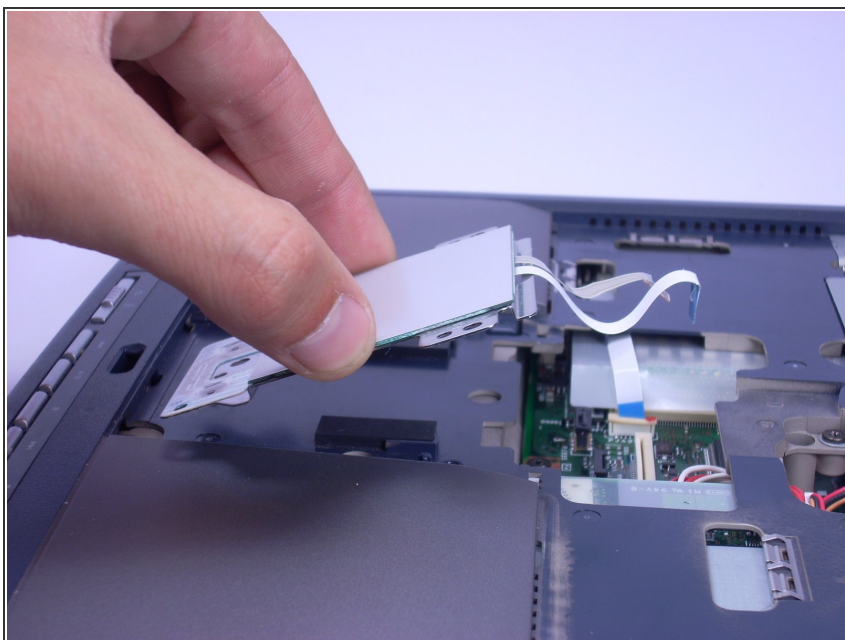


## Step 11



- Remove the white ribbon on the right by pinching the part connected to the laptop with your fingers and pulling towards you.

## Step 12



- Lift the track pad gently towards you, using your fingers.

To reassemble your device, follow these instructions in reverse order.

This document was generated on 2019-09-22 07:02:39 AM (MST).



