



# Toshiba Satellite 2430-S255 Screen Replacement

Removing and replacing a broken screen on a Toshiba Satellite 2430-S255.

Written By: Benjamin Macedo



---

## INTRODUCTION

This repair guide is for replacing a screen that may have been damaged or otherwise no longer functions. Before beginning this guide, make sure you have a Spudger and a Philip's Head 0 screwdriver bit.

To make sure the screen is not properly working and is in need of replacement, refer to this [troubleshooting guide](#)



### TOOLS:

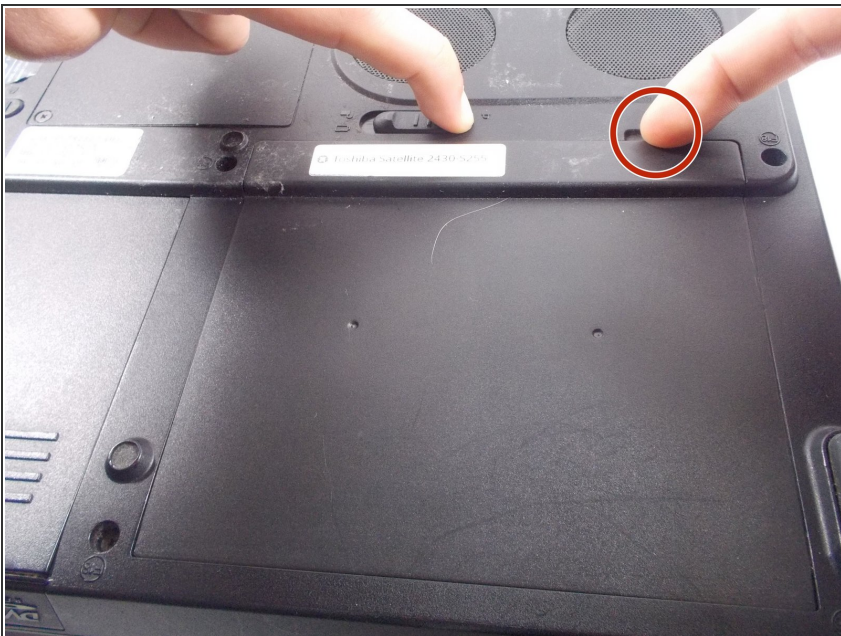
- [Spudger](#) (1)
  - [Phillips #0 Screwdriver](#) (1)
-

## Step 1 — Battery



- Locate the battery locking mechanism on the back side of the laptop. It is labeled with a lock and unlock symbol to indicate its function. The mechanism also has a serrated texture to increase grip.

## Step 2



- Place your left hand on the locking mechanism and slide it all the way to the left. This will move it into the unlocked position. While holding the mechanism in the unlocked position place another finger in the cavity to the right of the locking mechanism.



### Step 3



- Pulling up with your right hand while the locking mechanism is in the unlocked position will release the battery from its socket.

### Step 4 — Screen



- Open the laptop and remove the two highlighted screws using a PH 0 screw bit.
- ⓘ When opening the laptop, place the screen against a wall or object. This is done due to removing any structural integrity to the screen portion of the laptop later in the guide.

## Step 5



- Take the spudger and insert it between the screen and plastic frame
  - Tilt the spudger towards you until you hear a click, this means that a clasp has been released
- Do this process along the right side, going up, across the frame, and back down to the left side.
- ⓘ To be sure every clasp has been released, try gently pulling the top of the frame towards you. If frame does not come away from the screen, then there are still claps connected.

## Step 6



- Once all of the clasps have been released, the screen should be able to swivel back and forth from the bottom frame.
- Place a hand on either side of the plastic frame, and lift up and away from the screen to release the last two hinges on the left side of the screen.

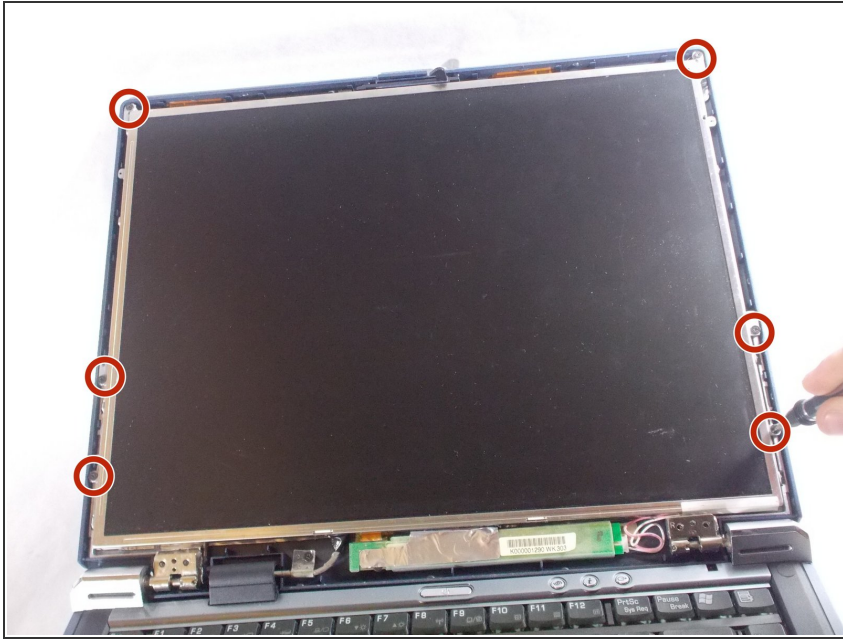
## Step 7



- Remove the two screws holding the screen to the frame using the PH 0 screwdriver bit.



## Step 8



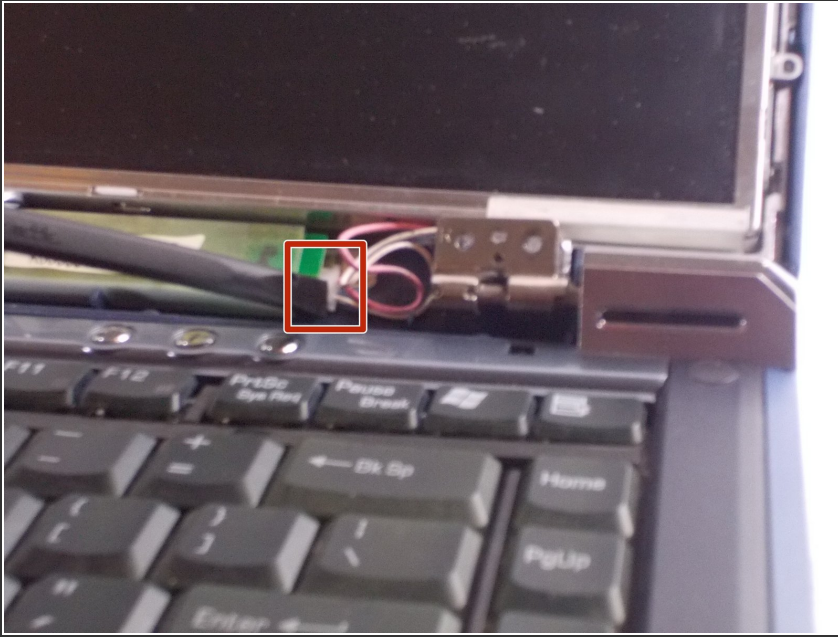
- Remove the six screws along the outside of the screen using the PH 0 screwdriver bit.

## Step 9



- Next remove the screw holding down the white wire using the PH 0 screwdriver bit.

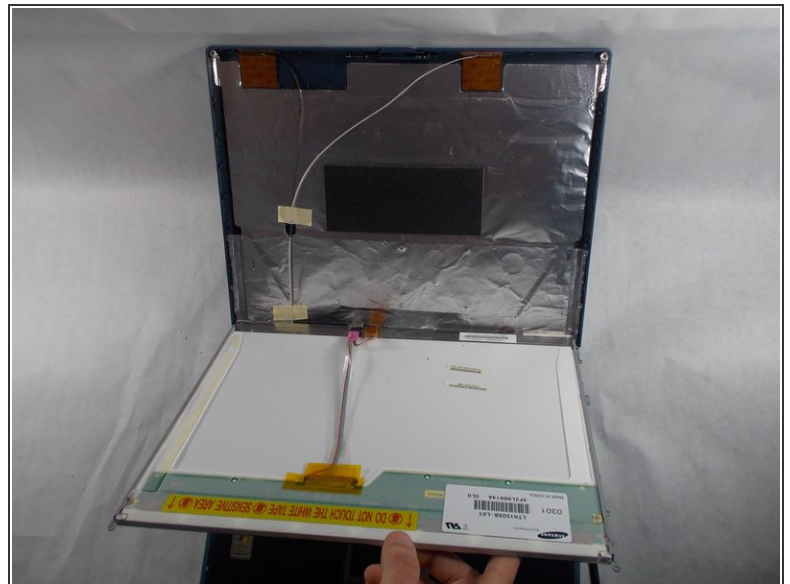
## Step 10



- Place the edge of the spudger against the edge of the connector.
- Push towards the right side of the frame with a light force until the cable comes loose.

⚠ Be careful when removing the cable, as it is weak and easily breakable.

## Step 11

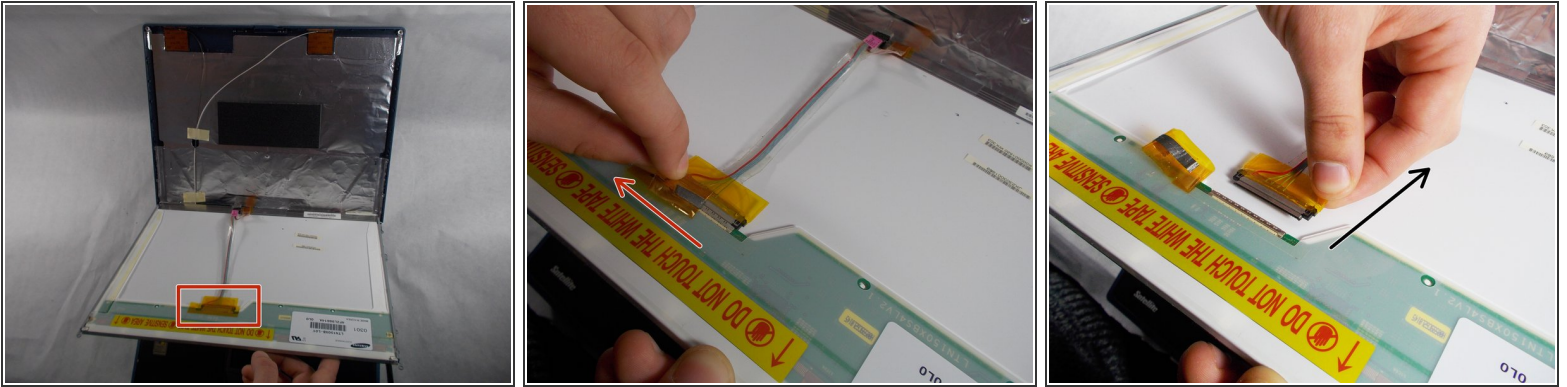


- Now tilt the screen away from the frame

⚠ Be careful when tilting the screen from the frame, there is a ribbon cable connected to the backside of the screen.



## Step 12



- To remove the ribbon cable, peel away the ESD tape.
  - Hold one side of the tape on the cable, and gently pull down along the screen.
- ⚠ Be careful on this step, using too much force when removing the cable can damage either end of the connection.

To reassemble your device, follow these instructions in reverse order.