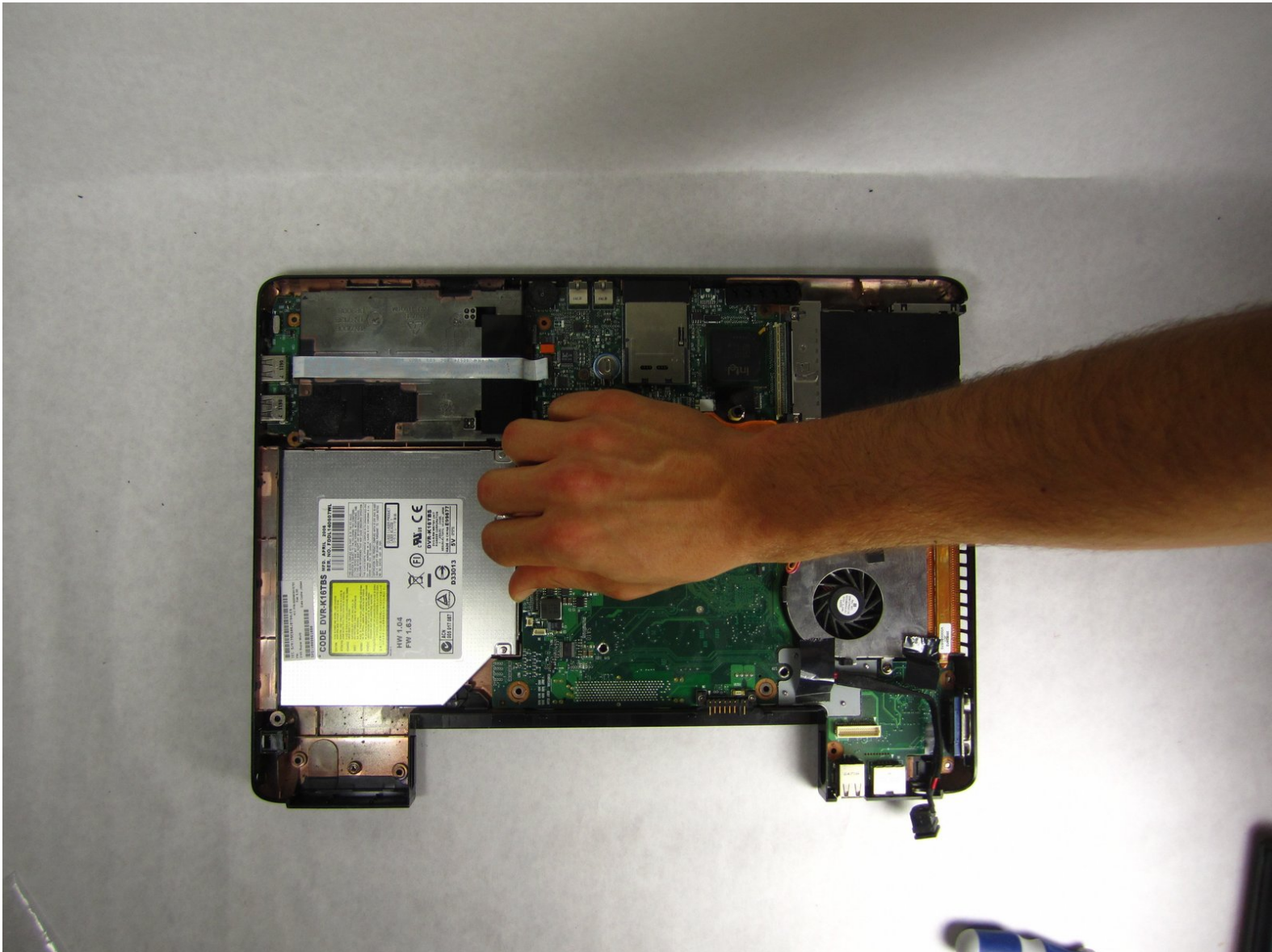




Toshiba Satellite A105-S4011 Optical Drive Replacement

Install a new optical drive in your Toshiba A105.

Written By: Cara Sloth



INTRODUCTION

Installing a new optical drive is quite simple, and only requires removing one screw. The difficulty comes from removing the display from the computer, which allows you to then remove the optical drive.

TOOLS:

- [Phillips #00 Screwdriver](#) (1)
-

Step 1 — Battery



- Turn the laptop over and locate the lock and battery release switches. Unlock the battery by changing the switch on the right from locked to unlocked by sliding the switch outward.

Step 2



- Hold the release switch and pull out the battery towards you.

Step 3 — Keyboard



i Make sure to turn off the laptop, unplug the device and/or remove any batteries.

- Open the laptop so the display screen is bent fully back with the display facing upward, parallel to the surface you are working on.
- Wedge the Phillips 00 screwdriver above the F1 key, and separate the top piece of plastic from the body of the laptop. Don't worry about breaking it! You will need to forcefully wedge the screwdriver under the plastic, simultaneously pushing upward and forward.
- Once that section has popped up, work on pulling the rest of the plastic piece up and out, alternating from left to right.

Step 4



- Completely remove the plastic piece from the body of the laptop.
- Using the Phillips 1 screwdriver, unscrew the two 3mm screws located at the top corners of the keyboard. (See the second picture for additional clarification.)

Step 5



- Without yanking, lift the keyboard up carefully.
- Now that the board is free, cautiously undo and pull free the ribbon that connects the keyboard to the body of the laptop.

Step 6 — Display



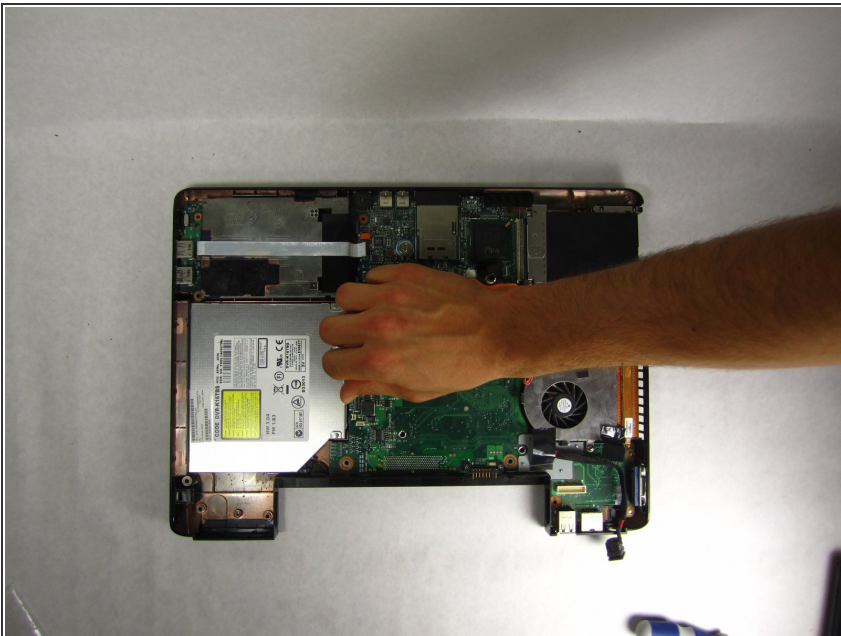
- Turn the laptop over, so that you are now looking at the bottom of the laptop.
 - Using the Phillips #1 screwdriver remove the fourteen 6mm screws.
 - Using the Phillips #1 screwdriver remove the three 4mm screws.
- ⚠ Before beginning this guide, make sure you have disconnected the seven wires described in step 4 of the keyboard guide (the guide that proceeds this one).

Step 7



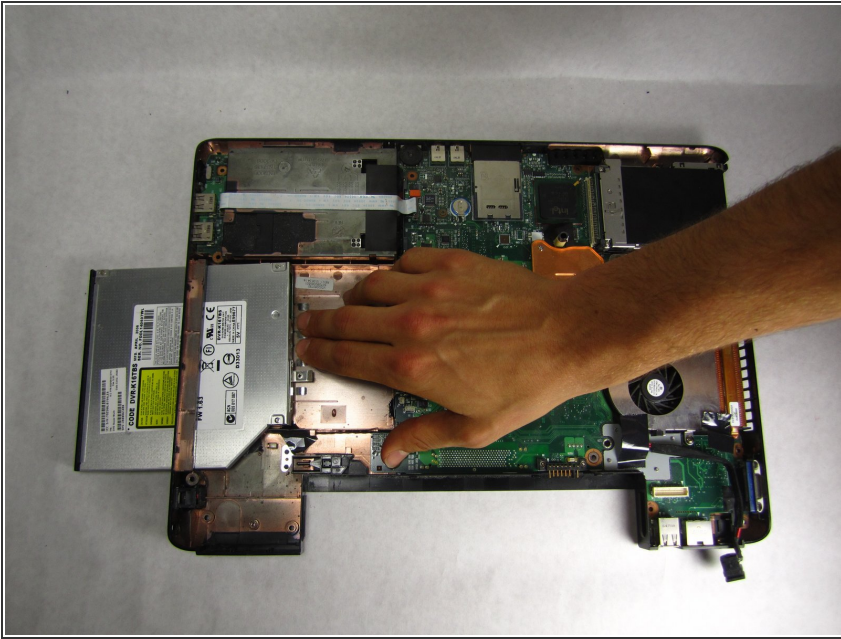
- Completely remove the display piece by pulling between the silver display-component and the black bottom-component. The display-component is an all-in-one component pictured here.
- ⓘ You may need to use the plastic opening tool to pry the two sections apart
- ⓘ Manufacturer sells the display piece, pictured here, as a complete piece for replacement purposes.

Step 8 — Optical Drive



- Using the #00 Phillips Screwdriver, remove the single screw that holds the optical drive in place.
- ⓘ Once again you may want to consider grounding yourself before touching the disk drive.

Step 9



- Simply push the disk drive to the left, as demonstrated in the picture, until the disk drive is completely outside of the casing.
- ☑ Keep the disk drive in a place that is cool and dry. This will help prevent any damage from occurring.

Step 10



i This disk drive model appears to not have any connecting wires, however your disk drive might need additional steps to connect it to the motherboard.

To reassemble your device, follow these instructions in reverse order.