



Toshiba Satellite A105-S4074 Hard Drive Replacement

Replacing a non-functioning hard drive of the Toshiba Satellite A105-S4074. If the drive will not boot, your computer could have hard drive failure.

Written By: Ryan Bortnick



INTRODUCTION

After diagnosing your Toshiba Satellite A105-S4074, should hard drive failure be imminent and replacement necessary, these easy to follow instructions will guide you through the process.



TOOLS:

- [Phillips #1 Screwdriver](#) (1)




PARTS:

- [Toshiba L200 1TB 5400RPM SATA Notebook Internal Hard Drive](#) (1)

Step 1 — Battery



 To prevent electrical shock, make sure the computer is turned off; and disconnect the power adapter from the computer and electrical outlet prior to beginning any repairs on this device.

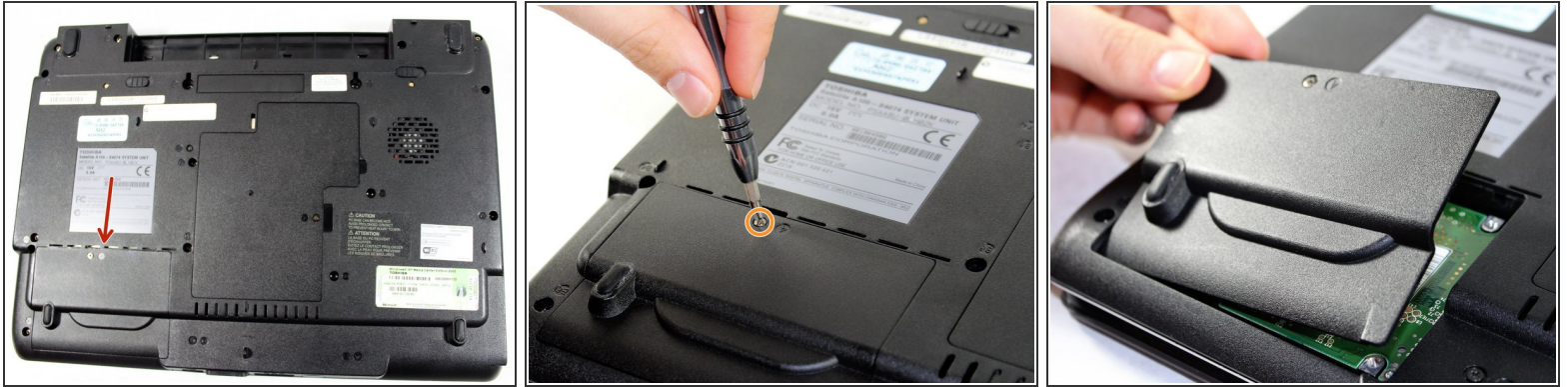
- Turn the laptop upside down with the battery facing you.

Step 2



- Slide both the left and right battery release tabs outwards away from center of the laptop.
 - ⓘ Right release tab will remain locked in place.
- While still holding the left release tab, slide the battery towards you using your right hand.
- Fully remove the battery from the laptop.

Step 3 — Hard Drive



- Turn the laptop around so that the battery slot is facing away from you, and locate the hard drive access panel in the lower left-hand corner.
- Locate the hard drive access panel in the lower left-hand corner on the bottom of the laptop, and loosen the 4.0 mm screw in the top center of the panel using the Phillips #1 screwdriver.
- ⓘ This is a captive screw and will remain intact with the panel.
- Carefully remove the panel with your fingers by lifting the edge at the indent.

Step 4



- You should now have full access to the hard drive.
- Slide the hard drive to the left.
- Gently lift the hard drive from the side closest to you and remove it.

To reassemble your device after replacing the hard drive, follow these instructions in reverse order.