



Toshiba Satellite A105-S4074 Keyboard Replacement

Replacing the keyboard of the Toshiba Satellite A105-S4074 should it become non-responsive.

Written By: Ryan Bortnick



INTRODUCTION

Should the keyboard of your Toshiba Satellite A105-S4074 become non-responsive—one or more keys slow, stuck, or producing multiple characters; or the entire keyboard is not functioning—and need to be replaced, these easy to follow instructions will guide you through the process.



TOOLS:

- [iFixit Opening Tools](#) (1)
- [Phillips #0 Screwdriver](#) (1)




PARTS:

- [Toshiba Satellite A105-S4074 Keyboard](#) (1)

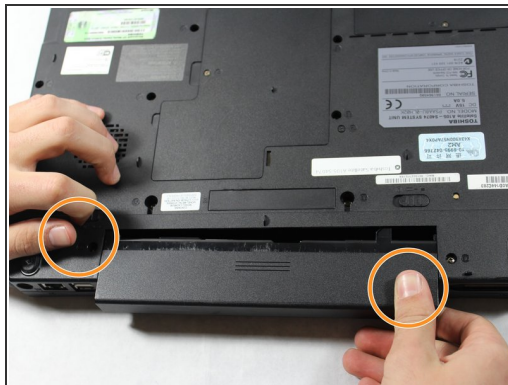
Step 1 — Battery



 To prevent electrical shock, make sure the computer is turned off; and disconnect the power adapter from the computer and electrical outlet prior to beginning any repairs on this device.

- Turn the laptop upside down with the battery facing you.

Step 2



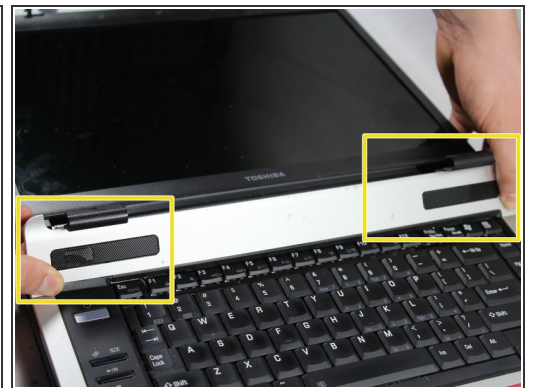
- Slide both the left and right battery release tabs outwards away from center of the laptop.
 - ⓘ Right release tab will remain locked in place.
- While still holding the left release tab, slide the battery towards you using your right hand.
- Fully remove the battery from the laptop.

Step 3 — Keyboard



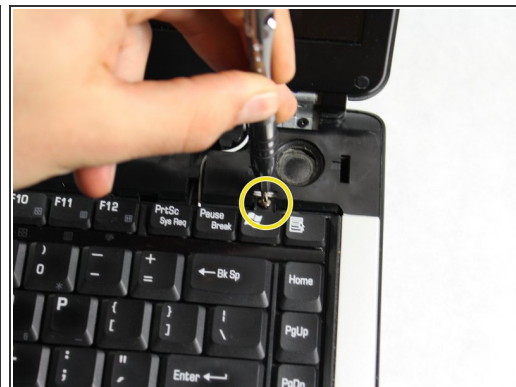
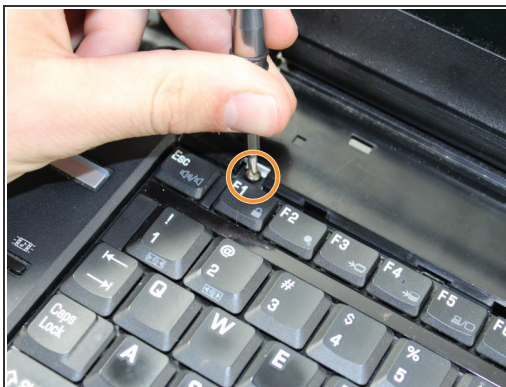
- Turn the laptop back over so it is right-side up, with the cover facing up.
- Open the laptop all the way so that the screen is horizontal with the body.

Step 4



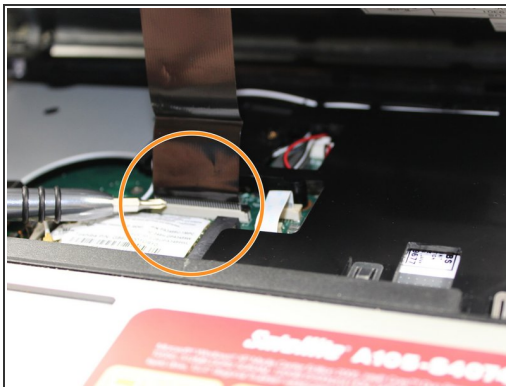
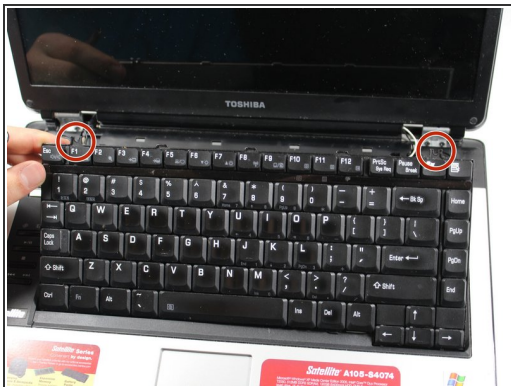
- Using the iFixit plastic opening tool, pop up the left tab along the top of the panel that is connected to the hinge for the widescreen display.
- Using the plastic opening tool, pop up the right tab along the top of the panel that is connected to the hinge for the widescreen display.
- Pry up and remove the cover panel that is located above the keyboard.

Step 5



- Position laptop so that both screws connecting the keyboard to the laptop are visible.
- Unscrew the left 3.0 mm screw that is holding the keyboard onto the laptop using the Phillips #0 screwdriver.
- Unscrew the right 3.0 mm screw that is holding the keyboard onto the laptop using the Phillips #0 screwdriver.

Step 6



- Gently lift the keyboard from either side where the screws were located.
 - Locate where the ribbon cable connects to the motherboard, and gently open clamp.
 - Pull out the ribbon cable connecting the keyboard to the laptop.
- ⚠ Avoid pulling directly on the ribbon cable while removing it, as this will cause permanent damage.

To reassemble your device after replacing the keyboard, follow these instructions in reverse order.