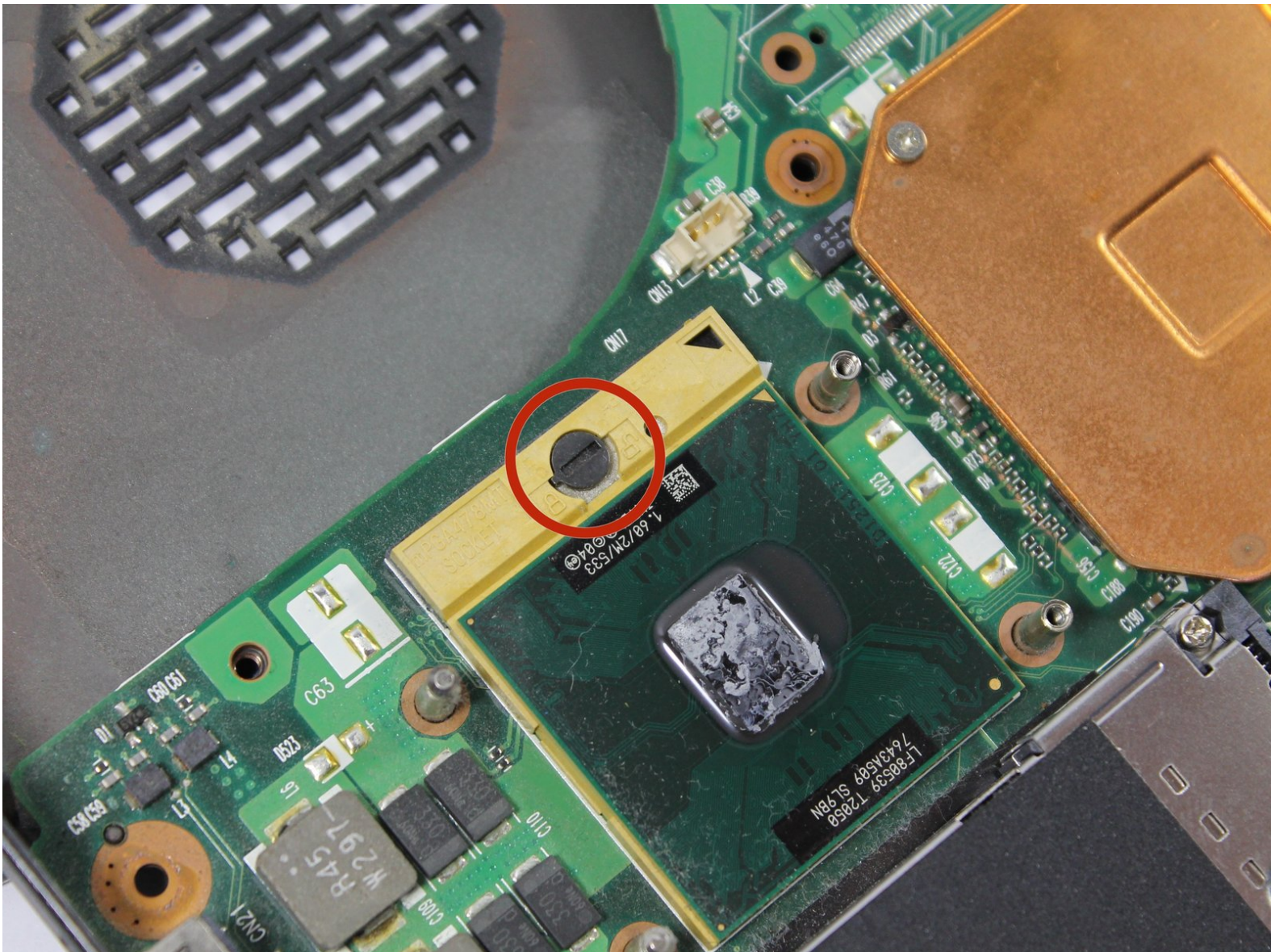




Toshiba Satellite A105-S4284 CPU(Central Processor Unit) Replacement

The CPU for this computer can be removed and replaced. This guide will show how to access the CPU and remove it for replacement.

Written By: Josh

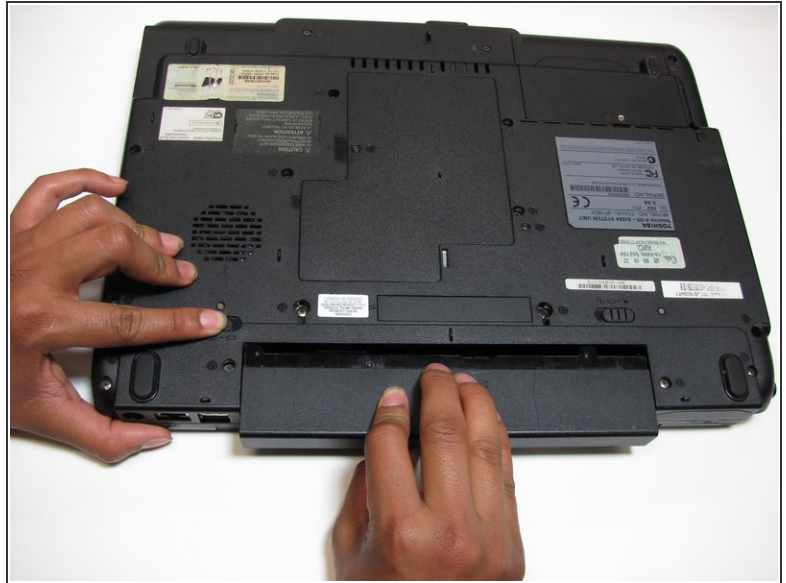





TOOLS:

- [64 Bit Driver Kit](#) (1)
- [iFixit Opening Tools](#) (1)

Step 1 — Battery




 Make sure your computer is turned off and the computer is not plugged in.

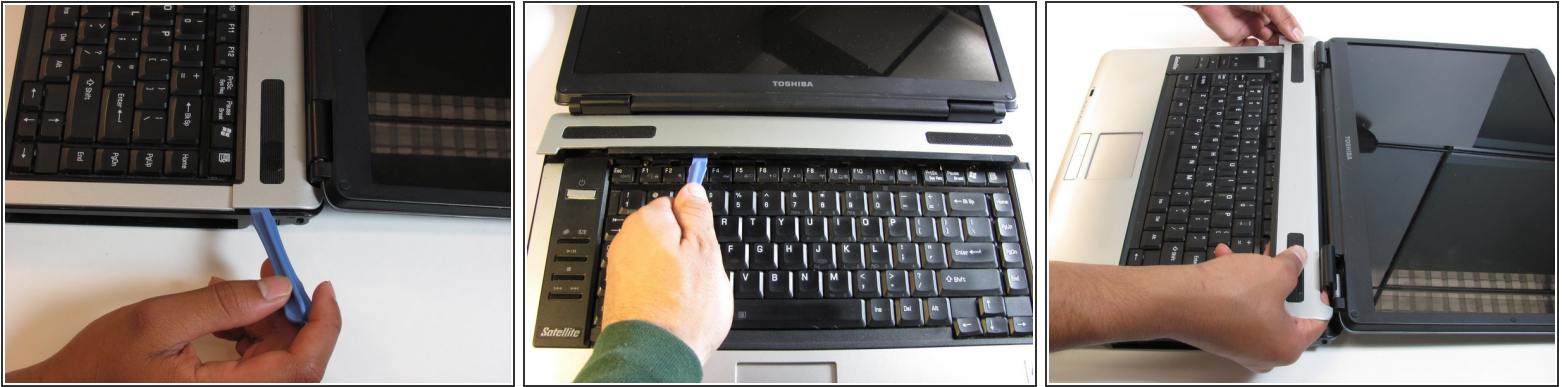
- Turn your laptop upside down, and slide the right release tab outward.
- Using your left hand, hold the left release tab towards the left side and then pull the battery out.

Step 2 — Keyboard



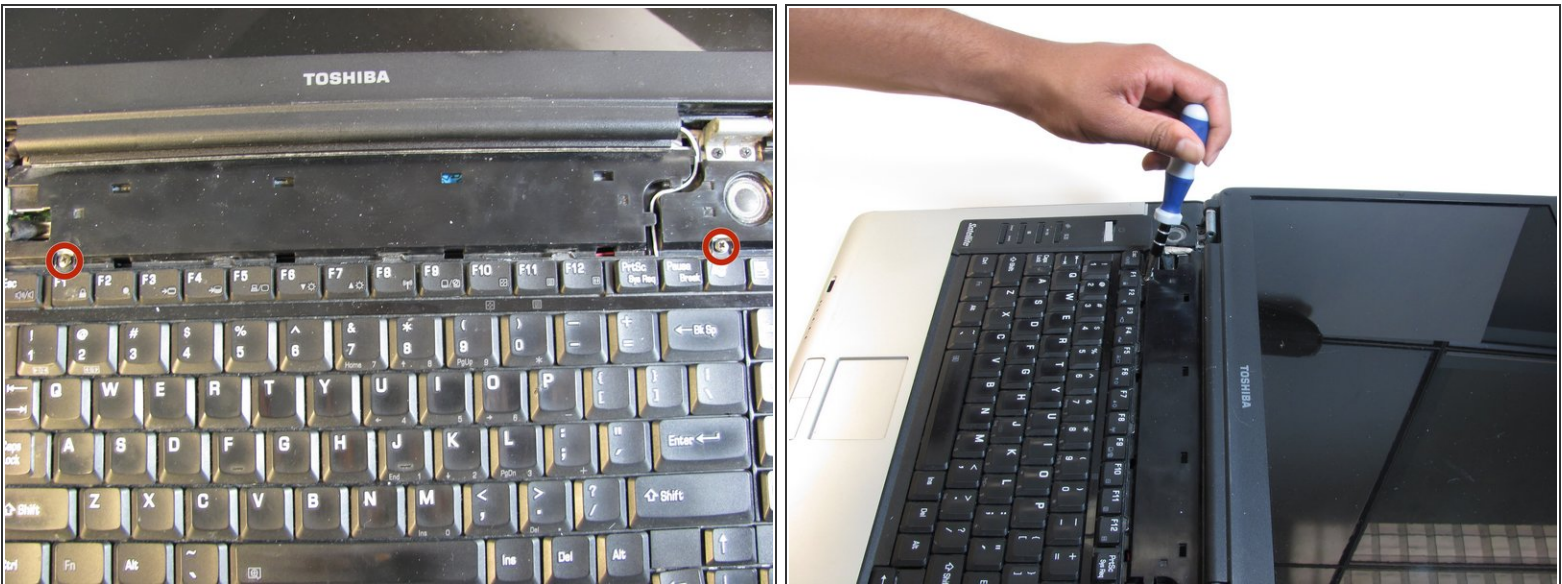
-  Flip the laptop over so it is rightside up, and open the laptop all the way so that the screen is horizontal.

Step 3



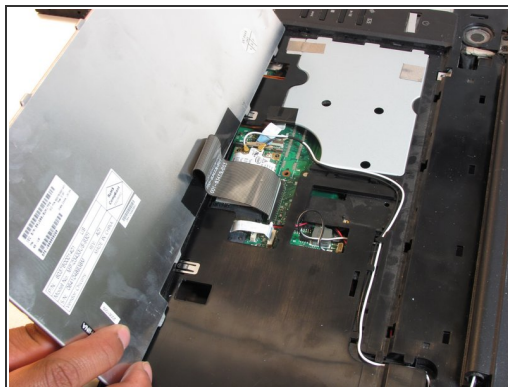
- Using the plastic opening tool, pry off the panel above the keyboard, starting near the right front speaker.
- Use the plastic opening tool to pop off tabs along the length of this panel.
- ❗ This may feel like you're about to break something, but as long as you work your way down the panel and don't yank it out, the laptop will be fine.

Step 4



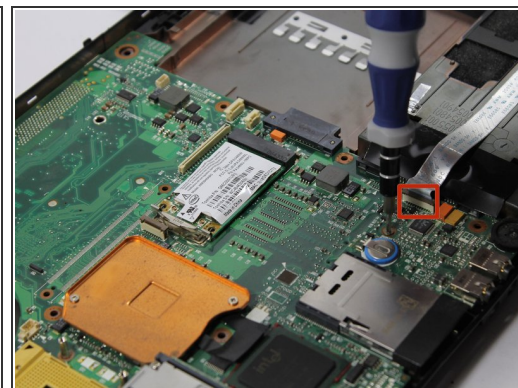
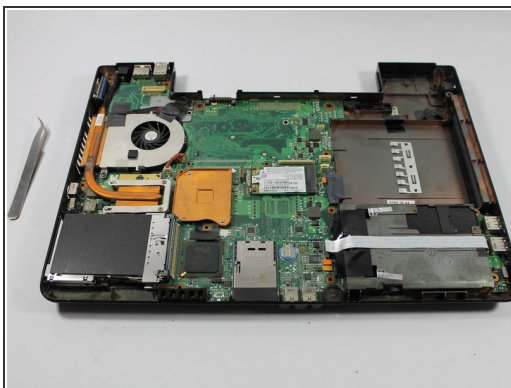
- Unscrew the two 4.5 mm screws holding the keyboard on with the Phillips #1 screwdriver.

Step 5



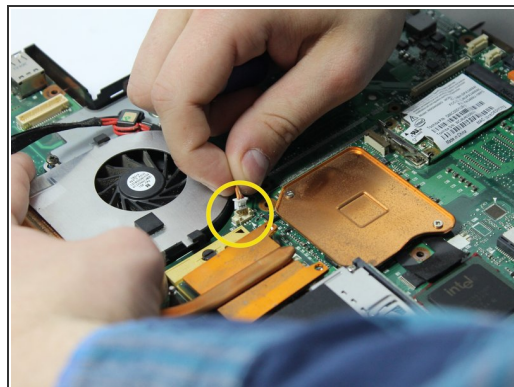
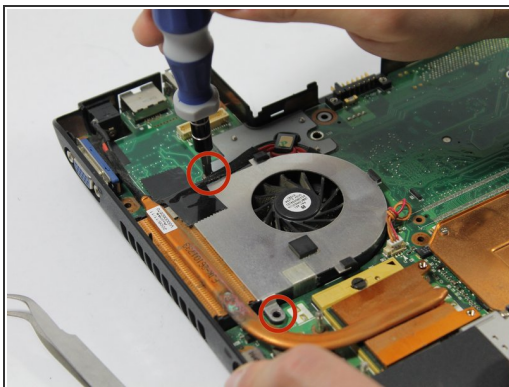
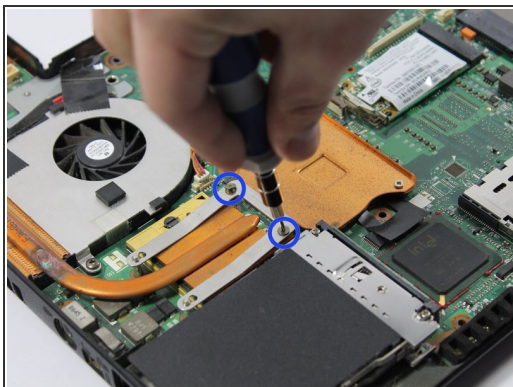
- Lift the keyboard gently from the side closest the screen.
- Pull out the ribbon connecting the keyboard to the laptop.

Step 6 — Motherboard



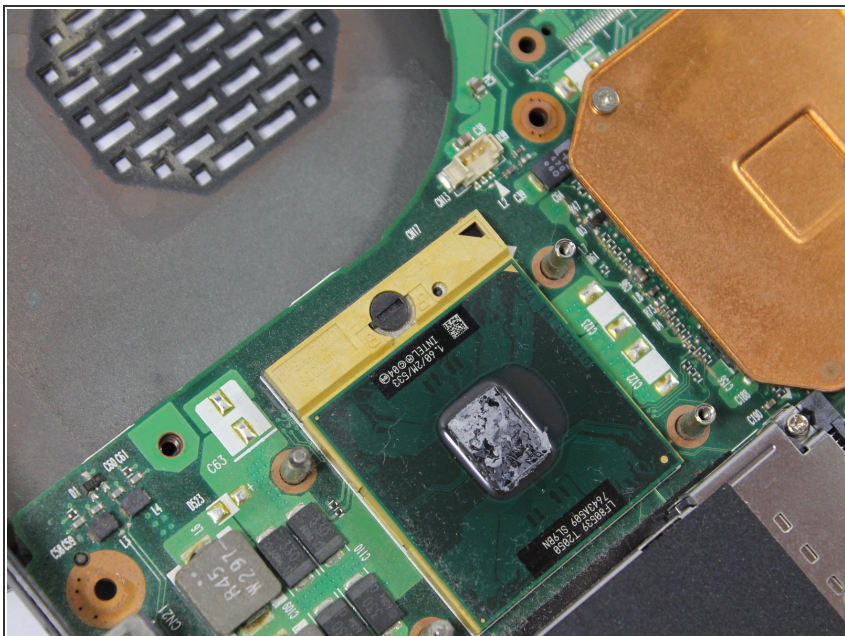
- Remove the upper half of laptop and place bottom half in the center of your workspace.
- Remove the one 2.00mm phillips screw.
- Remove the ribbon cable connecting the USB ports to the motherboard.

Step 7



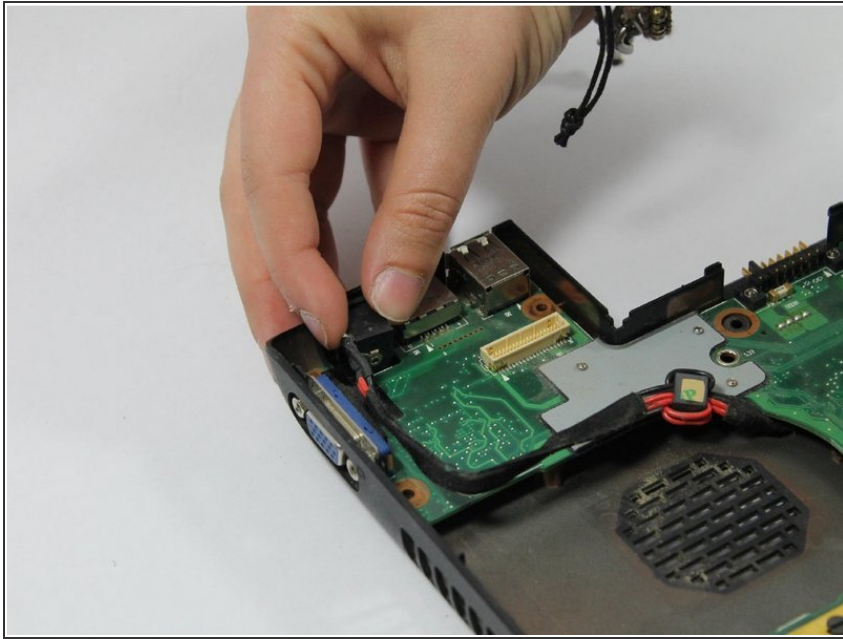
- Remove the two 2.5mm phillips screws holding the spring retainer for the heat sink.
- Remove the two 4.0mm phillips screws holding the fan in place.
- Remove the fan power connector.

Step 8



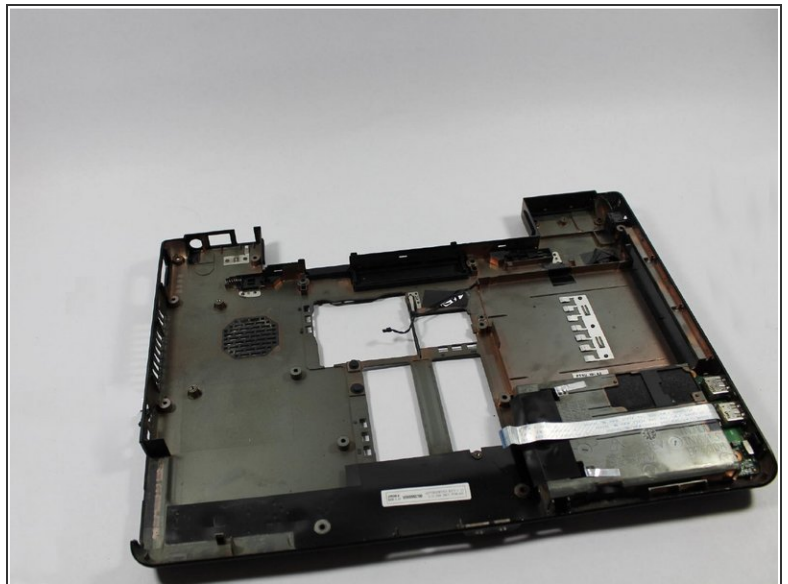
- Lift fan and heat sink out of case.

Step 9



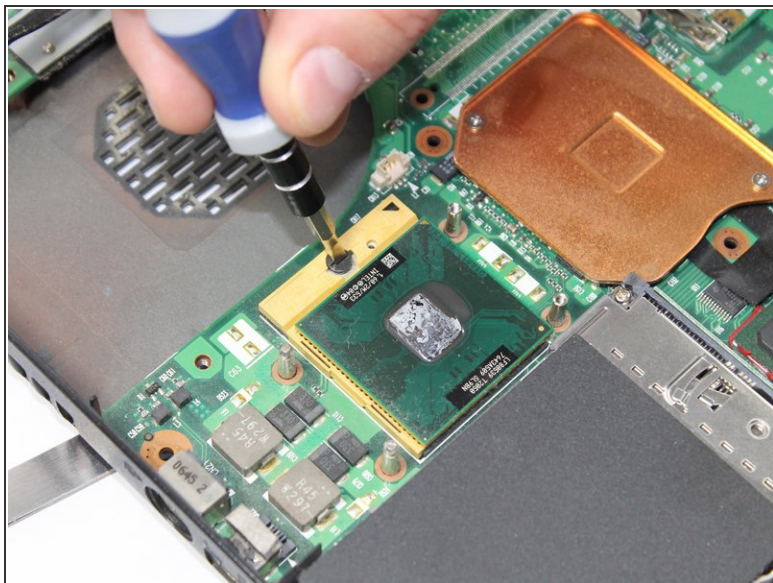
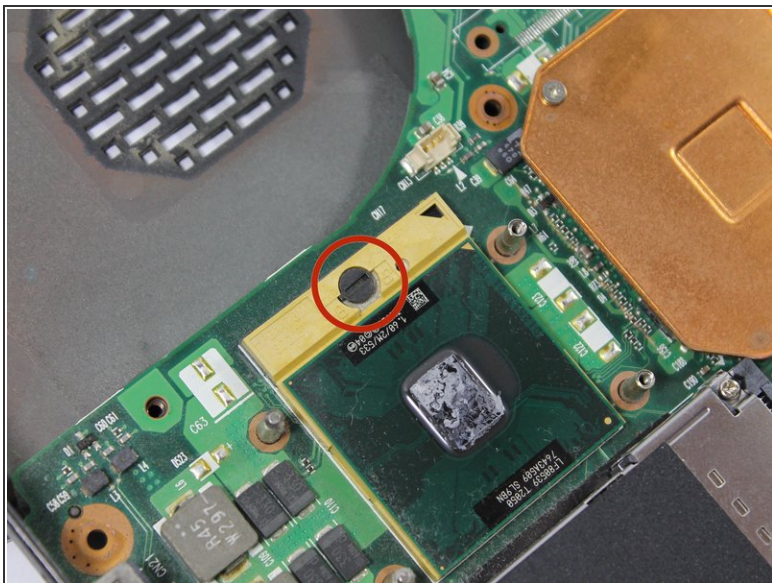
- Lift the power jack straight up and out of the slots that hold it in.

Step 10



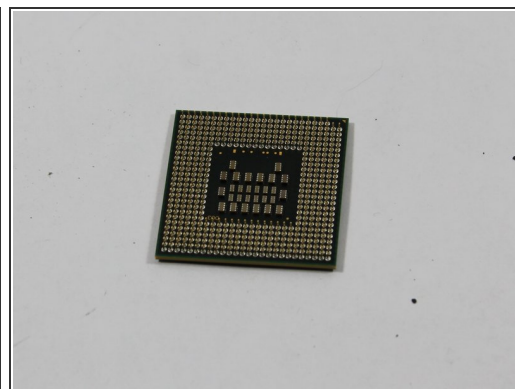
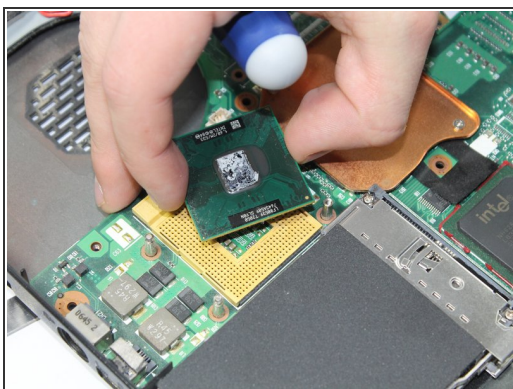
- Lift the motherboard out of the bottom case.

Step 11 — CPU(Central Processor Unit)



- Rotate the locking screw holding the CPU in, counter clockwise 180 degrees.

Step 12



- Lift CPU straight out of place.

⚠ Hold CPU by the sides so you do not damage the small pins.

To reassemble your device, follow these instructions in reverse order.