



Toshiba Satellite A105-S4284 Casing Replacement

To disassemble the main body of the laptop to gain access to several key components for repair.

Written By: Josh





TOOLS:

- [Phillips #1 Screwdriver](#) (1)
 - [iFixit Opening Tools](#) (1)
-

Step 1 — Keyboard



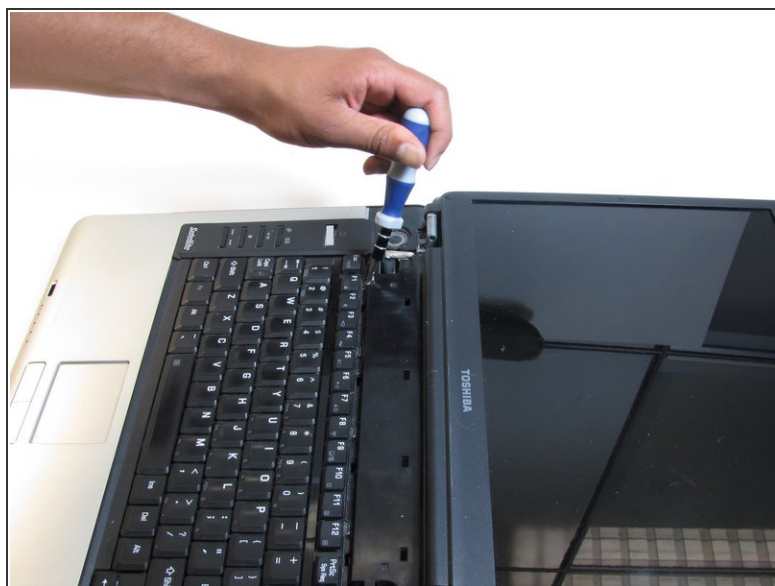
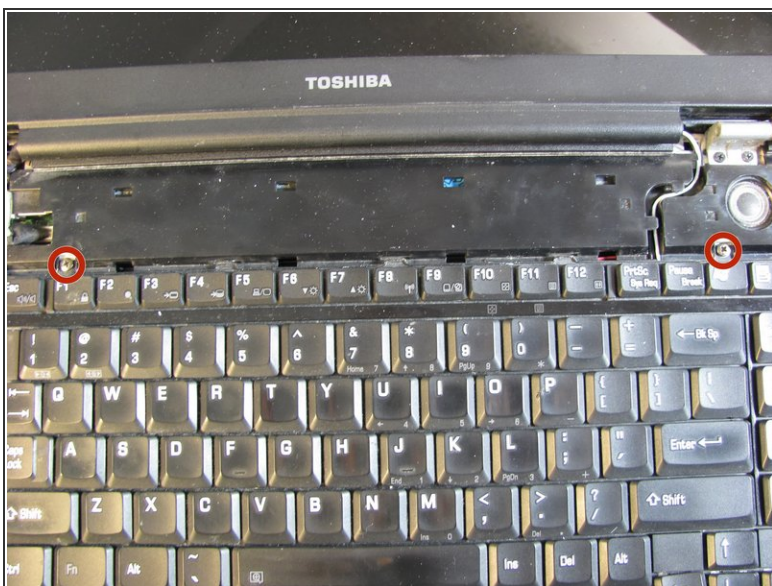
- i** Flip the laptop over so it is rightside up, and open the laptop all the way so that the screen is horizontal.

Step 2



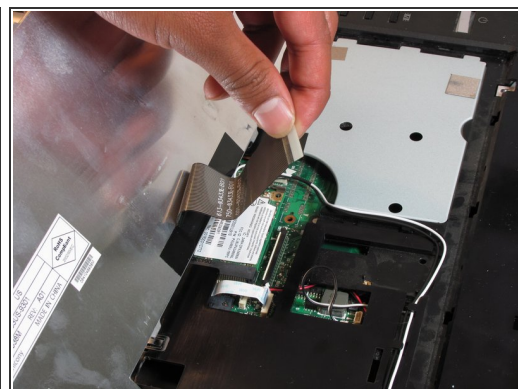
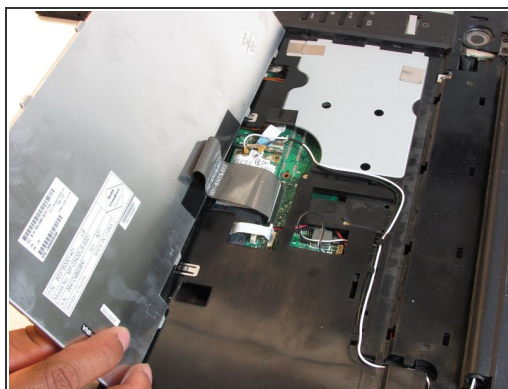
- Using the plastic opening tool, pry off the panel above the keyboard, starting near the right front speaker.
 - Use the plastic opening tool to pop off tabs along the length of this panel.
- i** This may feel like you're about to break something, but as long as you work your way down the panel and don't yank it out, the laptop will be fine.

Step 3



- Unscrew the two 4.5 mm screws holding the keyboard on with the Phillips #1 screwdriver.

Step 4



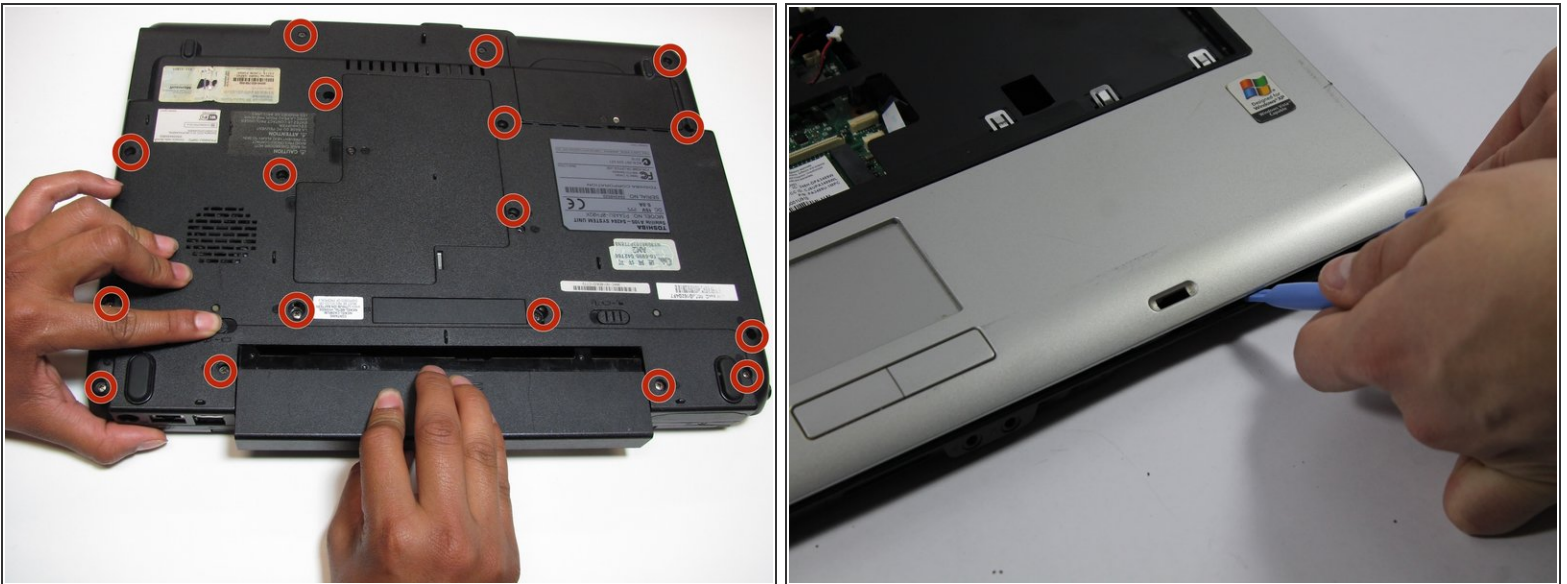
- Lift the keyboard gently from the side closest the screen.
- Pull out the ribbon connecting the keyboard to the laptop.

Step 5 — Casing



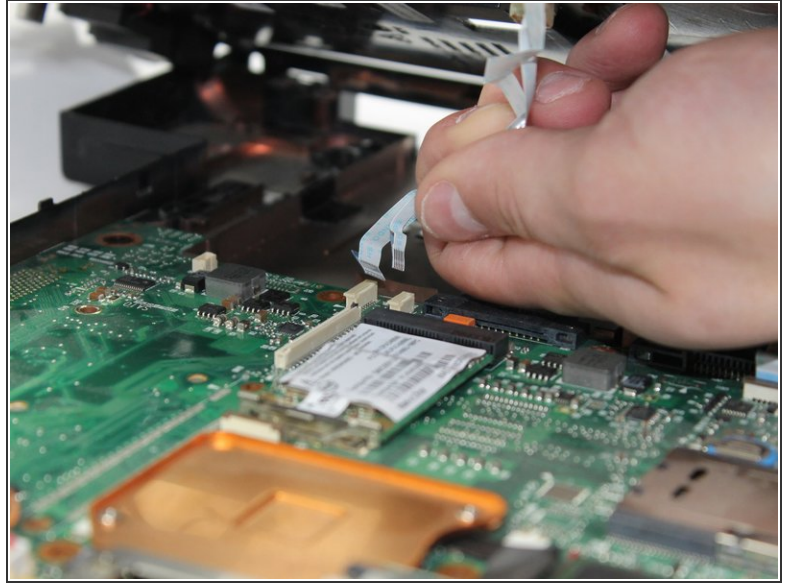
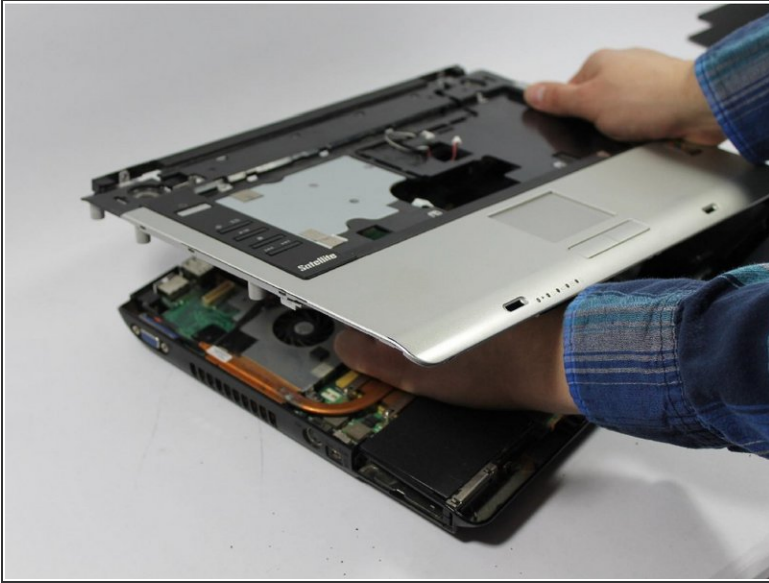
- Disconnect wire attaching LCD to motherboard
- Using the Phillips screwdriver remove the two 4.0mm screws from each hinge above speakers
- Partially close the lid and remove the last two 4.0mm screws from the back of the laptop.

Step 6



- Remove the seventeen 4.5mm phillips screws on the bottom of the laptop.
 - Using the pry tool separate the two halves of the laptop base.
- ⚠ Use caution when separating the laptop halves as they are still connected by two ribbon cables.

Step 7



- Lift the top half of the case enough to get your hand beneath it, and then remove the two ribbon cables that connect it to the motherboard.

To reassemble your device, follow these instructions in reverse order.