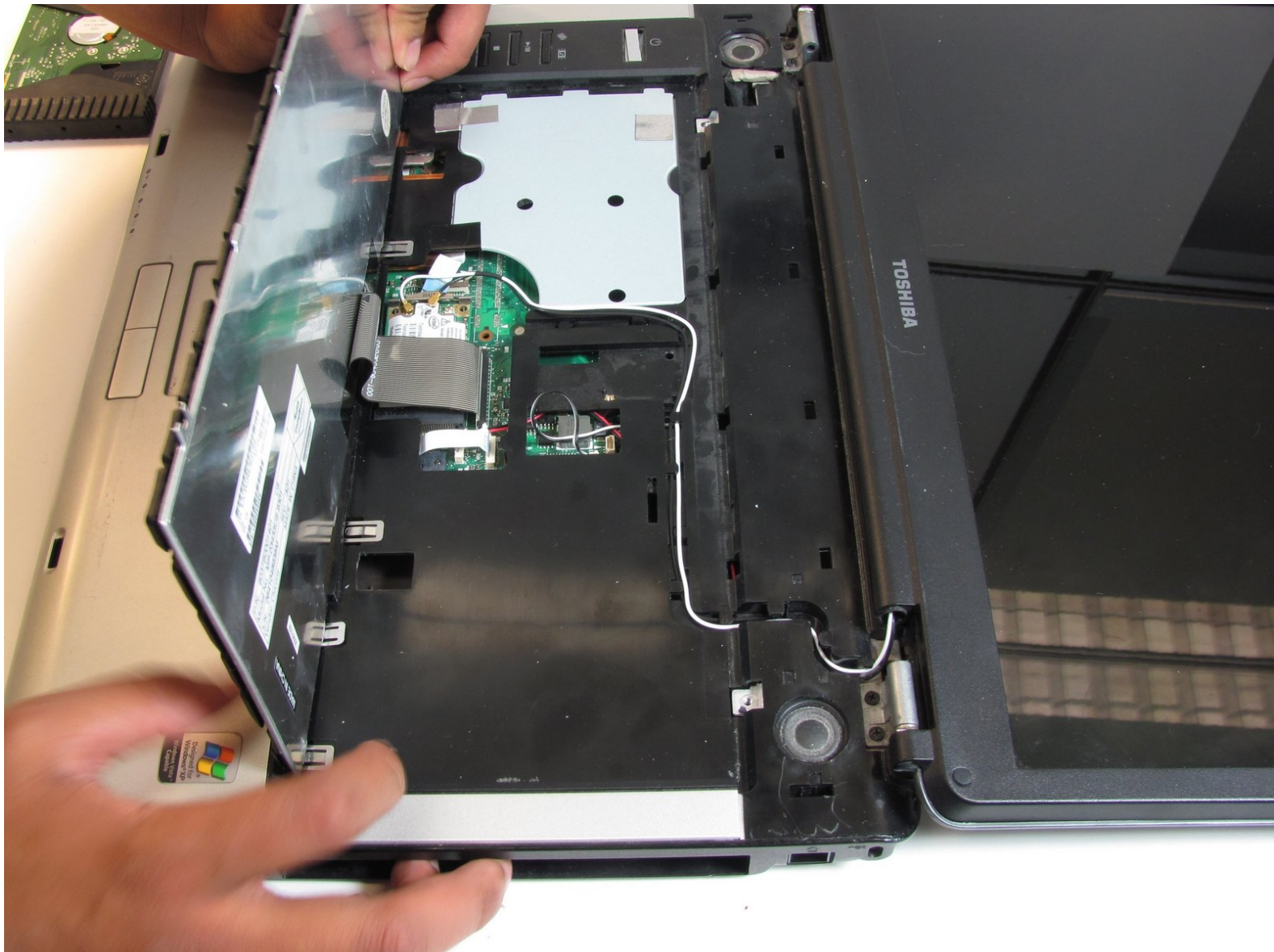




Toshiba Satellite A105-S4284 Keyboard Replacement

How to replace the Toshiba Satellite A105-S4284 keyboard

Written By: pfedigan



INTRODUCTION

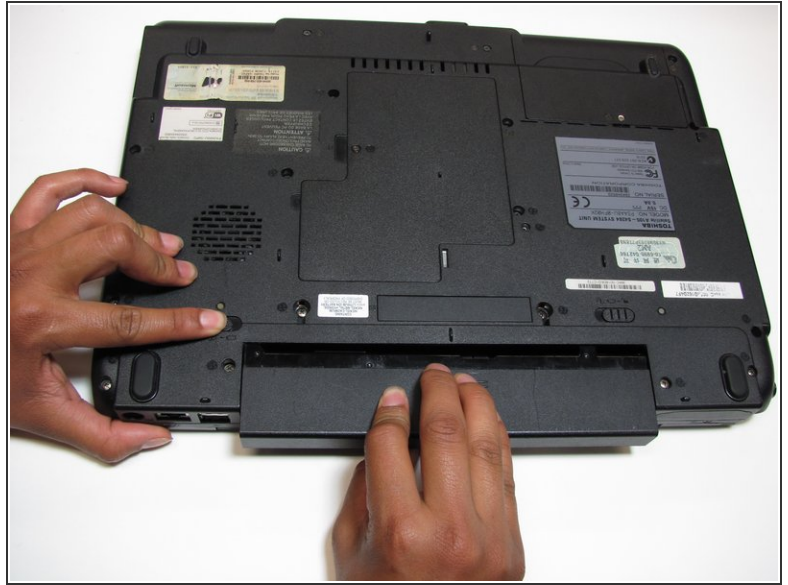
If your keys are not typing anything or the way they should, then check this guide to see how to safely remove and replace the keyboard input device on the computer. It will also contain detailed pictures on what to expect and watch out for, such as ribbons or wires.




TOOLS:

- [Phillips #1 Screwdriver](#) (1)
 - [iFixit Opening Tools](#) (1)
-

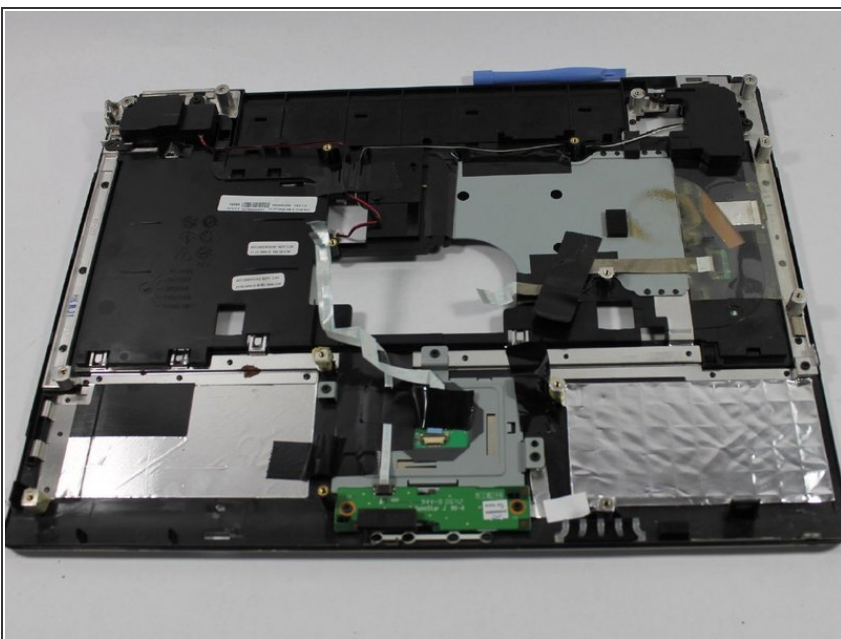
Step 1 — Battery



 Make sure your computer is turned off and the computer is not plugged in.

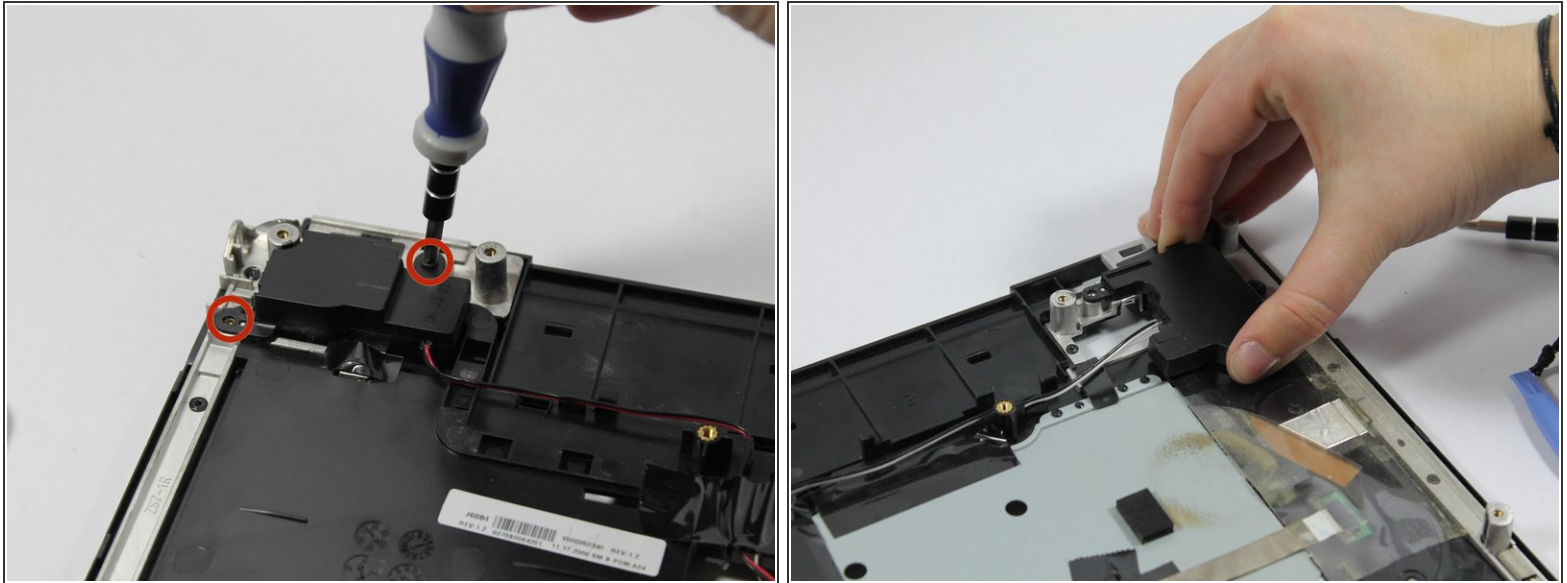
- Turn your laptop upside down, and slide the right release tab outward.
- Using your left hand, hold the left release tab towards the left side and then pull the battery out.

Step 2 — Speakers



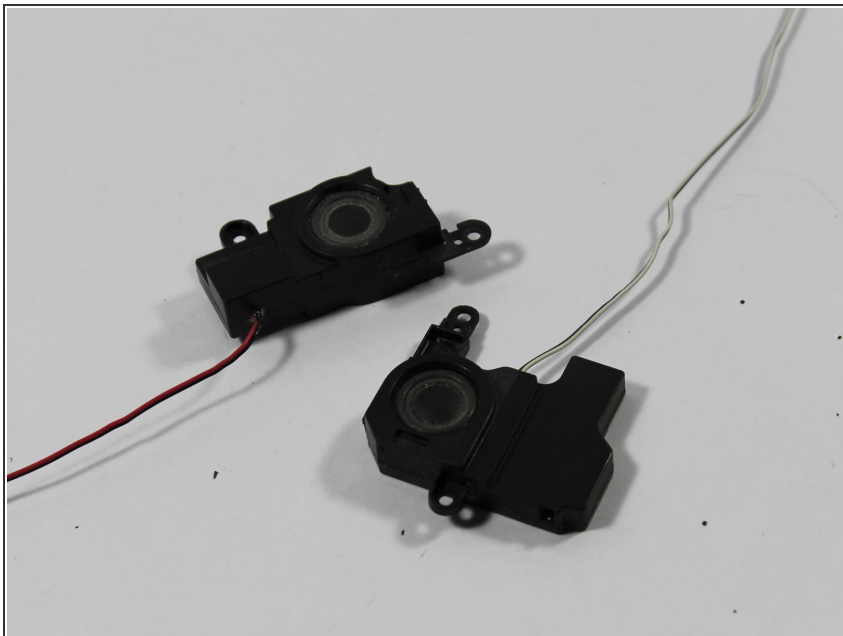
- Remove the lower half of the laptop and lay upper half on its top.

Step 3



- Using the Phillips screwdriver remove the two 4.0mm screws holding each of the speakers housings to the case.
- Remove the speakers from the case being careful of the wires.

Step 4



- The wires for the speakers are color coded. The red and black wires are for the right speaker, and the black and white wires are for the left speaker.

Step 5 — Keyboard



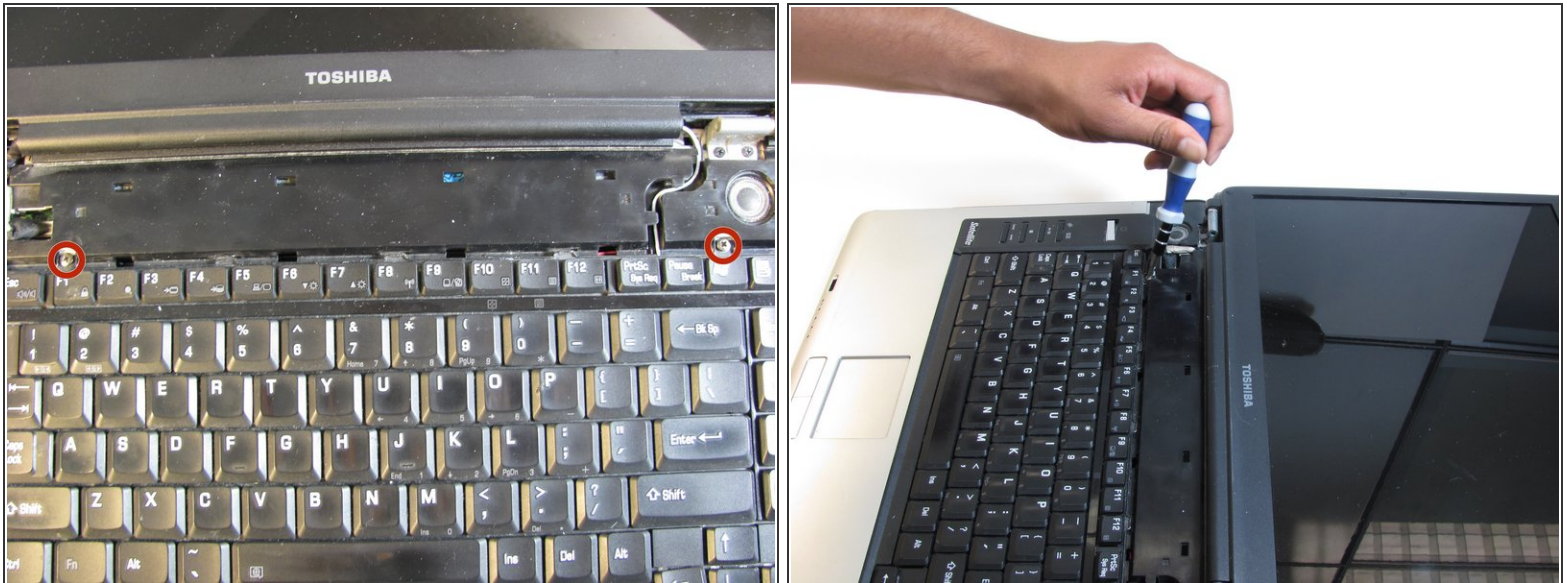
- i** Flip the laptop over so it is rightside up, and open the laptop all the way so that the screen is horizontal.

Step 6



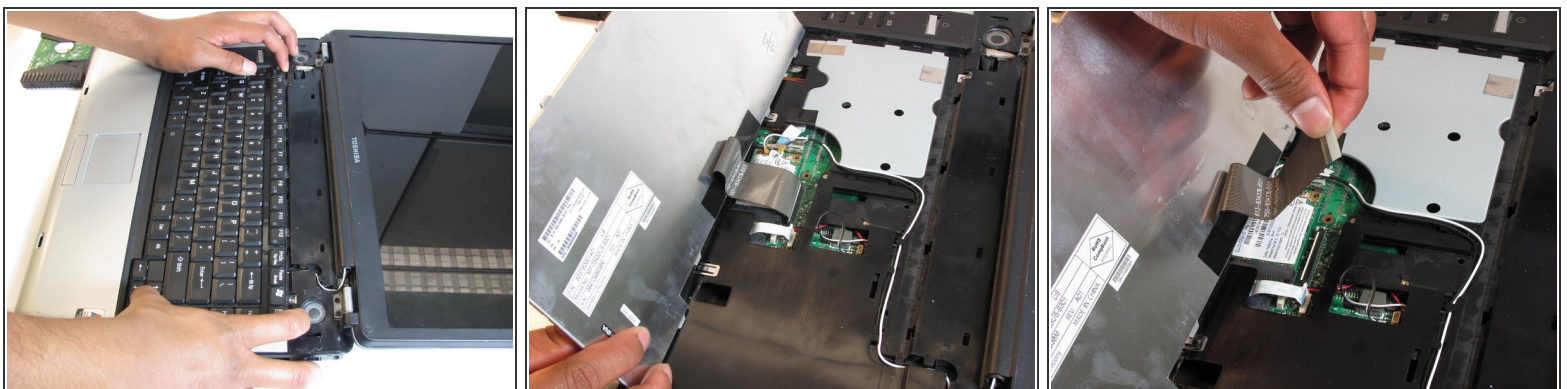
- Using the plastic opening tool, pry off the panel above the keyboard, starting near the right front speaker.
 - Use the plastic opening tool to pop off tabs along the length of this panel.
- i** This may feel like you're about to break something, but as long as you work your way down the panel and don't yank it out, the laptop will be fine.

Step 7



- Unscrew the two 4.5 mm screws holding the keyboard on with the Phillips #1 screwdriver.

Step 8



- Lift the keyboard gently from the side closest the screen.
- Pull out the ribbon connecting the keyboard to the laptop.

To reassemble your device, follow these instructions in reverse order.