



# Toshiba Satellite A205-S5812 Battery Replacement

How to replace the battery in a Toshiba Satellite A205-S5812.

Written By: Jamie Walker



## INTRODUCTION

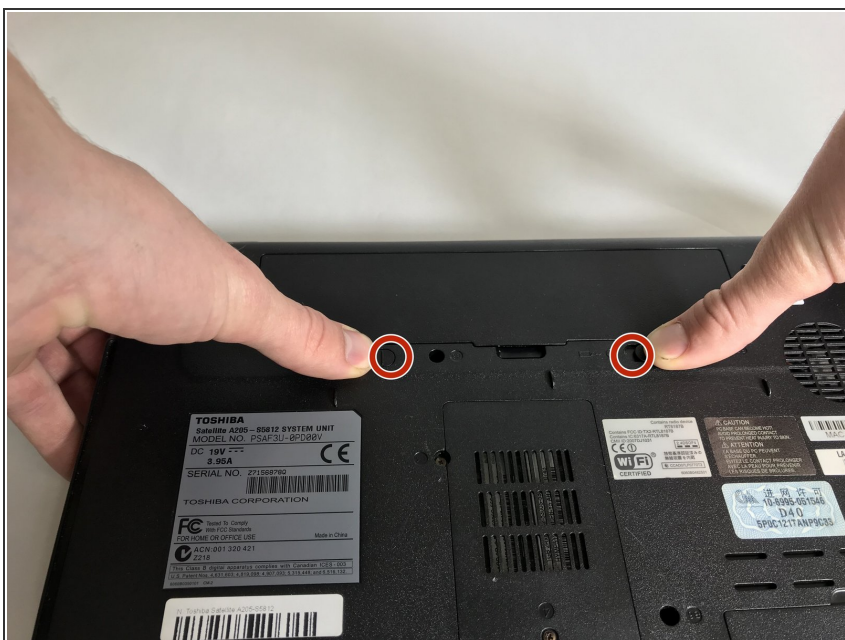
If your laptop will not power on after you have charged it and you have checked the RAM modules and the motherboard, use this guide to remove and replace your battery.

## Step 1 — Battery



- ⚠ Turn off your laptop before beginning.
- Turn the laptop over so the base of the laptop faces the ceiling.

## Step 2



- Push the two plastic tabs retaining the battery into the chassis to each respective side. This will push the battery up slightly and release it from the bottom of the notebook.

## Step 3



- Using a finger or small prying device, pull the battery upwards from the recessed area. Then, simply pull the battery out of the notebook and gently set it aside.

To replace the battery on your device, follow these instructions in reverse order.