



Toshiba Satellite A205-S5812 DVD Drive Replacement

How to replace a faulty DVD drive in a Toshiba Satellite A205-S5812.

Written By: Justin Harms



INTRODUCTION

If your laptop displays an error while reading a CD or DVD, does not play audio or video properly, or CD or DVD programs do not install or encounter errors after installation, then use this guide to remove and replace your DVD drive.

TOOLS:

- [Phillips #00 Screwdriver](#) (1)
-

Step 1 — Battery



- ⚠ Turn off your laptop before beginning.
- Turn the laptop over so the base of the laptop faces the ceiling.

Step 2



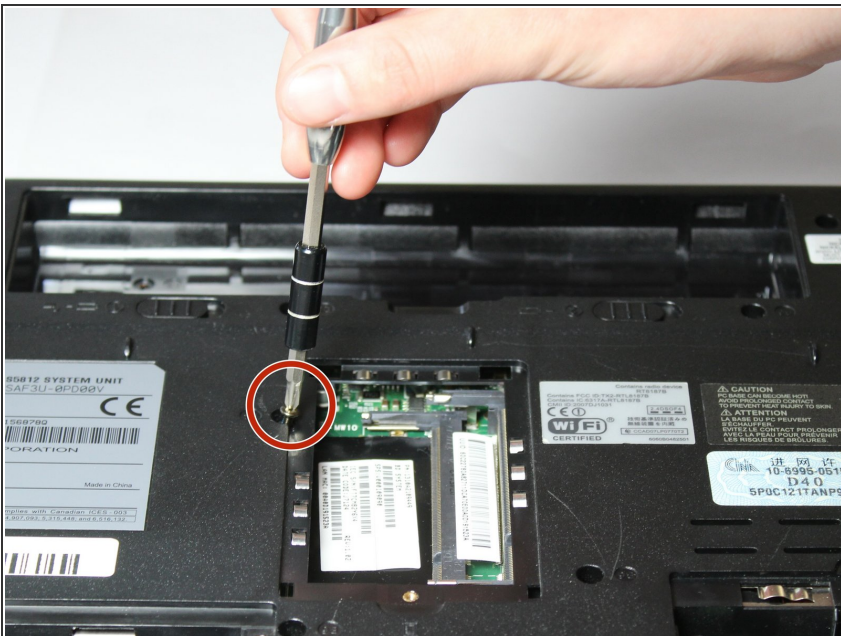
- Push the two plastic tabs retaining the battery into the chassis to each respective side. This will push the battery up slightly and release it from the bottom of the notebook.

Step 3



- Using a finger or small prying device, pull the battery upwards from the recessed area. Then, simply pull the battery out of the notebook and gently set it aside.

Step 4 — DVD Drive



- Remove the 3mm screw using a Phillips #00 screwdriver located beneath the RAM module cover.

This screw holds the DVD drive in place.

Step 5



- Carefully slide the DVD drive out of the side of the laptop.

To reassemble your device, follow these instructions in reverse order.