



Toshiba Satellite A210 Keyboard Replacement

This guide will show you how to remove the keyboard from the laptop.

Written By: Youlen



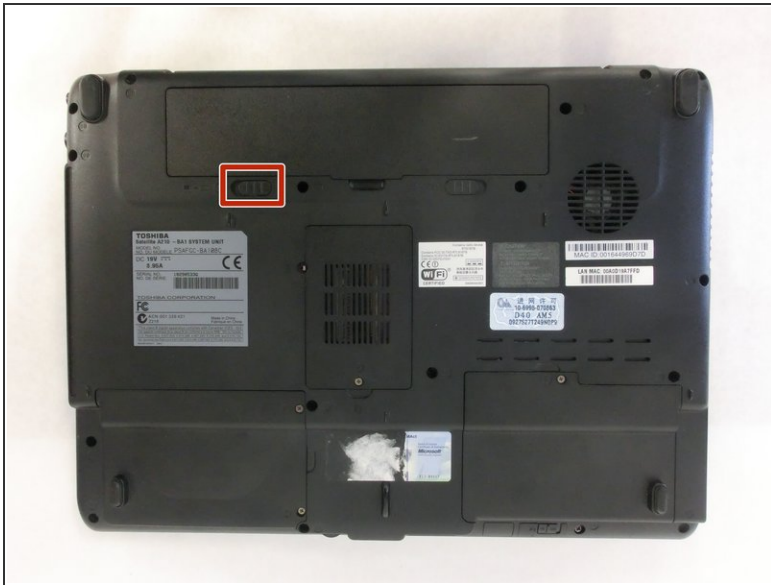
INTRODUCTION

In this guide you will learn how to remove a keyboard safely. Before you begin this guide you should have all required materials and tools necessary to properly remove the keyboard.

TOOLS:

- [Phillips #1 Screwdriver](#) (1)
-

Step 1 — Battery



- ⚠ Unplug the AC adapter and all other auxiliary components from the laptop.
- Slide the battery lock tab away from the center of the laptop to unlock the battery.

Step 2



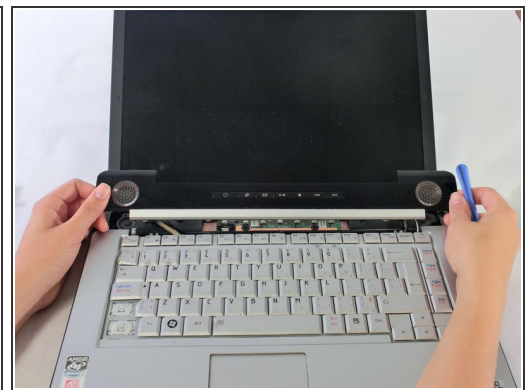
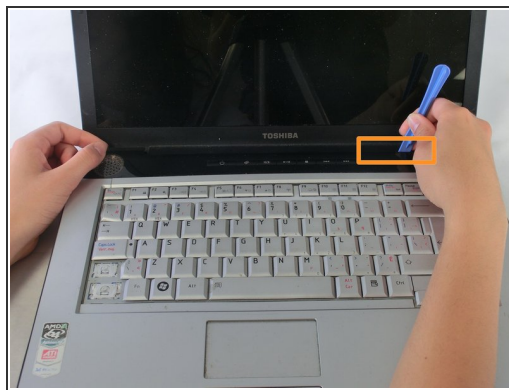
- Slide the battery release tab away from the center of the laptop and hold it.
- Lifting from the small notch between the two tabs, pull the battery out of the laptop.

Step 3 — Keyboard



- Unscrew the 4 highlighted screws with a PH1 screwdriver.

Step 4



- Orient the laptop so that the screen is open and facing you.
- Slide the plastic opening tool underneath the top edge of the black plastic insert.
- Pull it off and set aside.

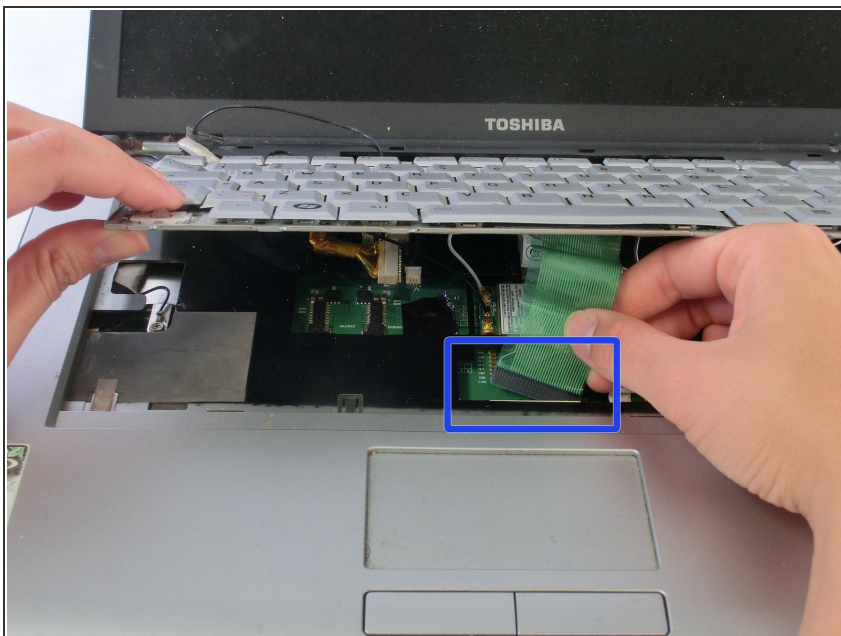
Step 5



- Remove the 2 PH1 screws.

⚠ Lift the keyboard from the top being careful not to remove it fully. There is still a ribbon cable that connects the keyboard to the laptop.

Step 6



- Disconnect the keyboard ribbon cable and remove the keyboard from the laptop.

To reassemble your device, follow these instructions in reverse order.