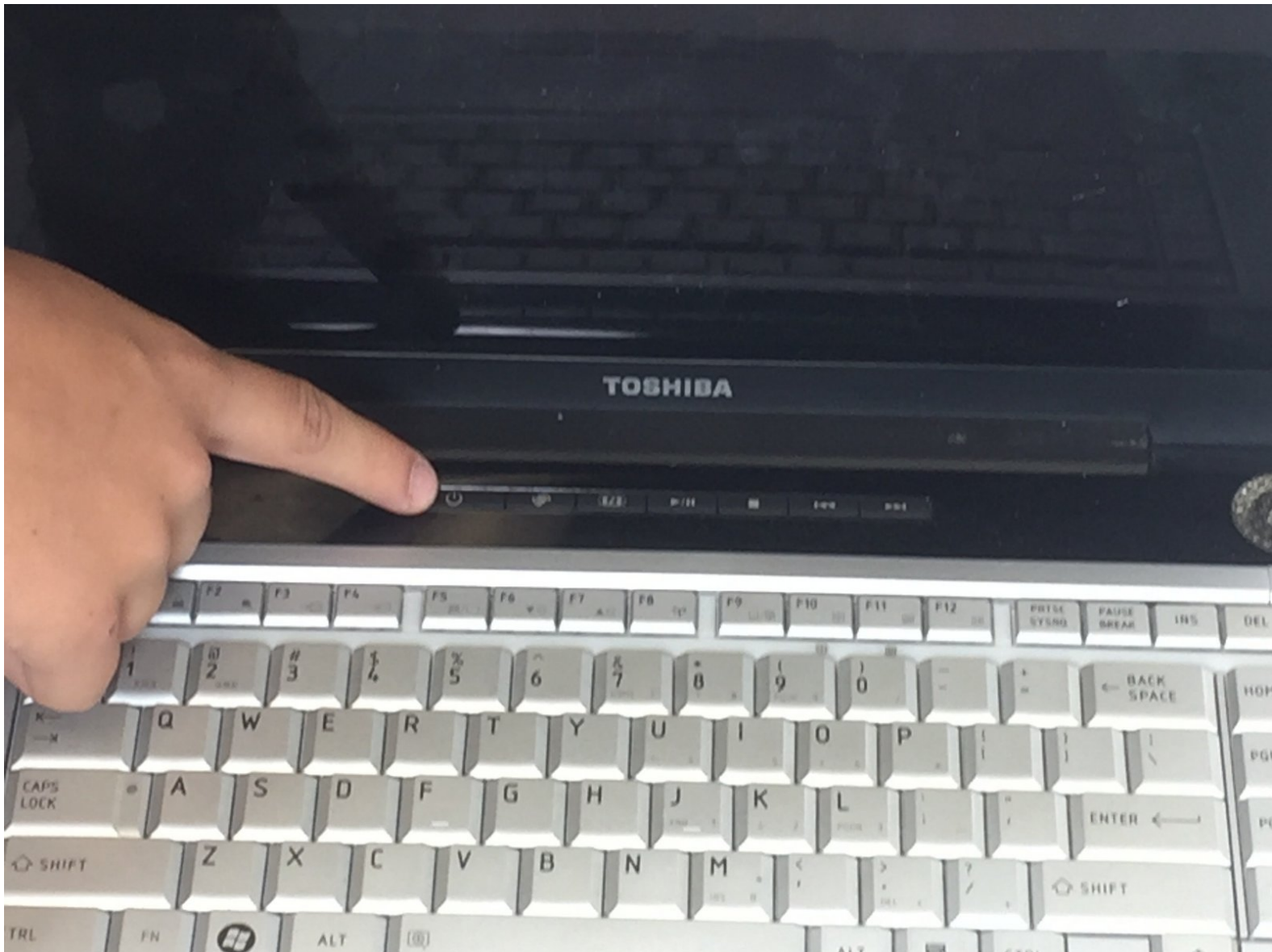




# Toshiba Satellite A215-S4757 Battery Replacement

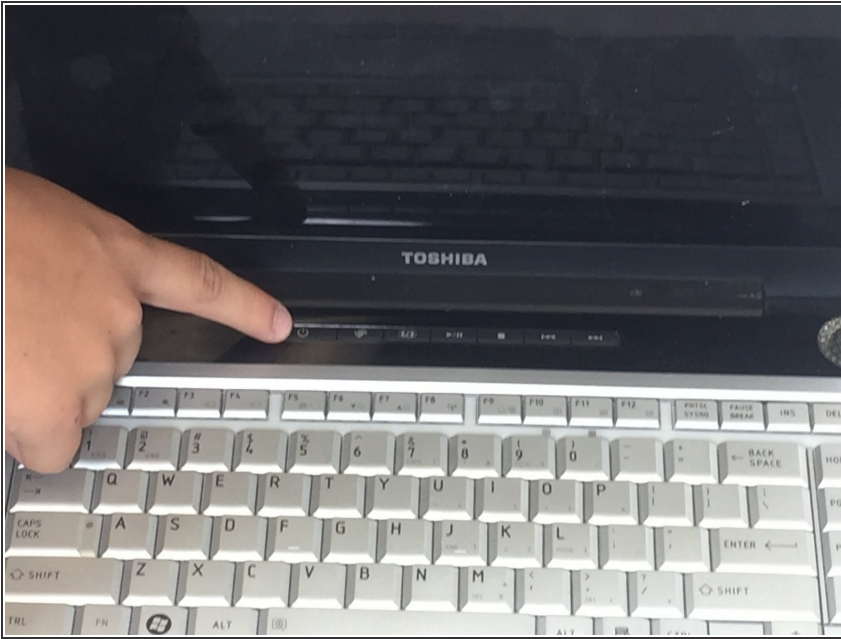
We will demonstrate how to detach the battery from your Toshiba Satellite, and how to replace a new battery.


Written By: Jacob Brown



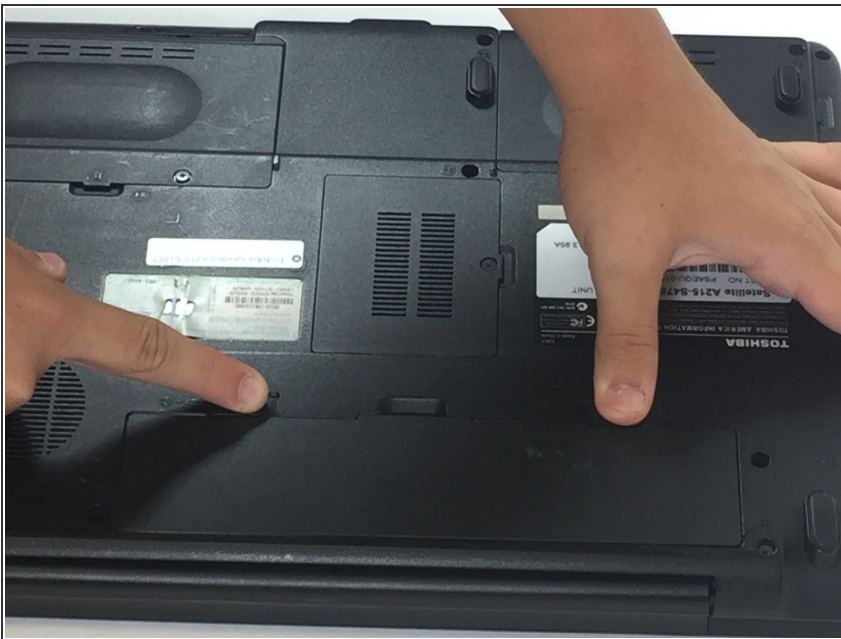
This document was generated on 2019-10-03 07:08:22 PM (MST).

## Step 1 — Battery



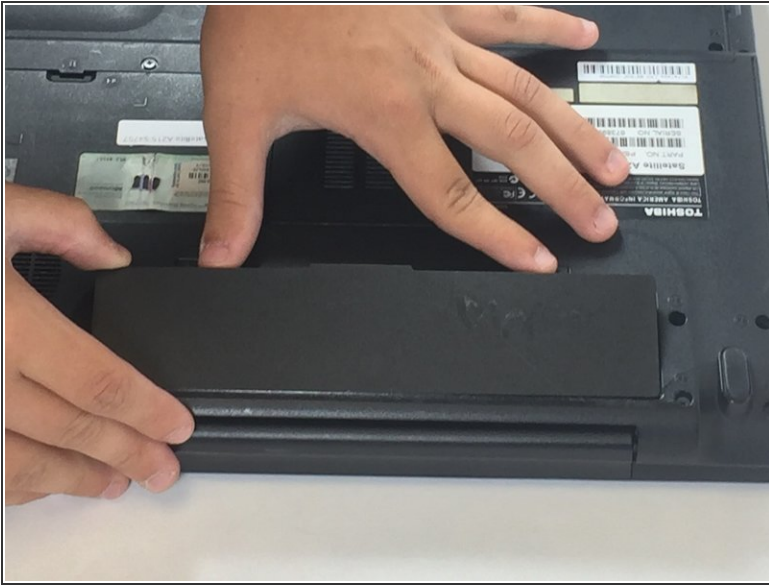
 Before removing anything on your Toshiba Satellite, make sure your computer is turned off, and your power adapter is not plugged in.

## Step 2



- Turn your Satellite over and locate your battery.
- Locate the battery clips.
- With your thumb and pointer fingers slide them outward at the same time, and hold.

## Step 3



- Gently lift the battery out of its socket until completely removed and release the clips.
- Your battery is now removed from your computer.

To reassemble your device, follow these instructions in reverse order.