



Toshiba Satellite A215-S4757 Display Screen Replacement

In this guide we will show you how to disassemble the display screen to replace new display.

Written By: Jacob Brown

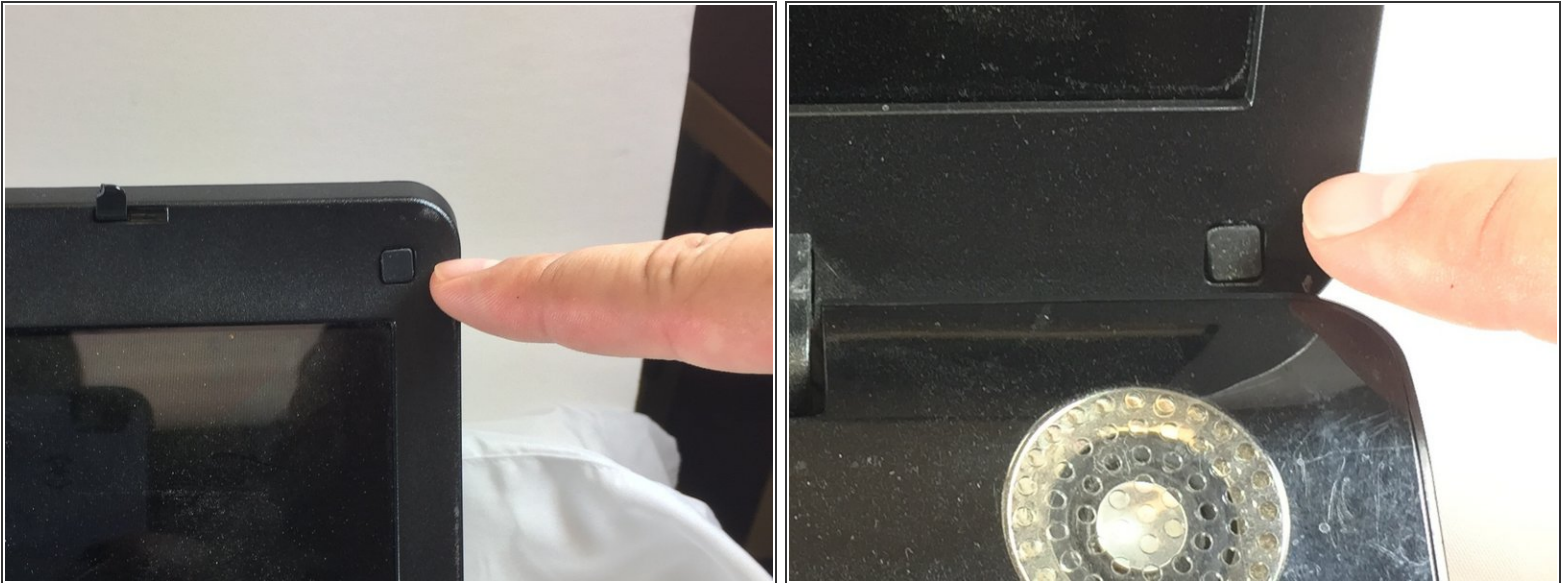




TOOLS:

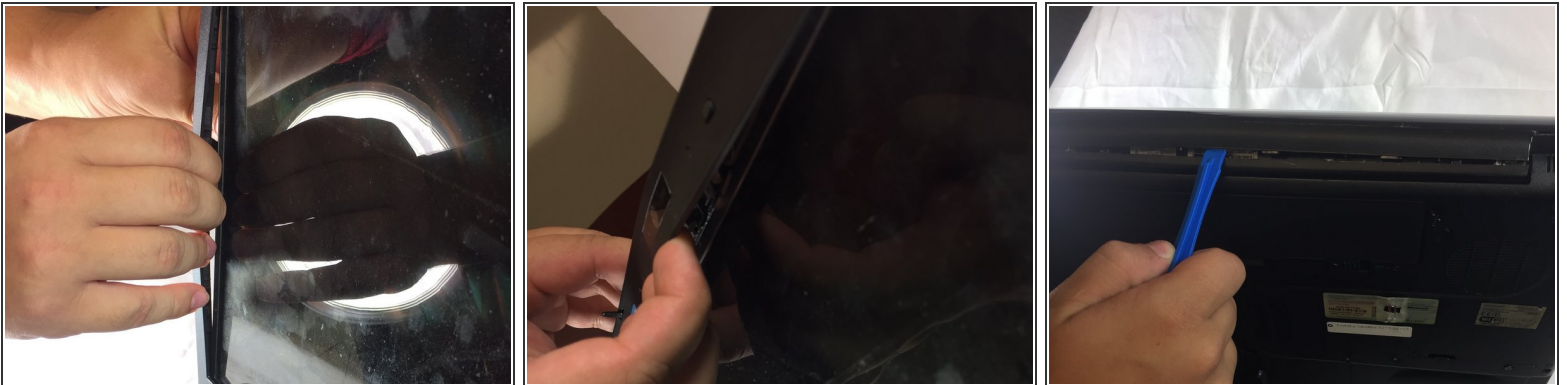
- [iFixit Opening Tools](#) (1)
-

Step 1 — Display Screen



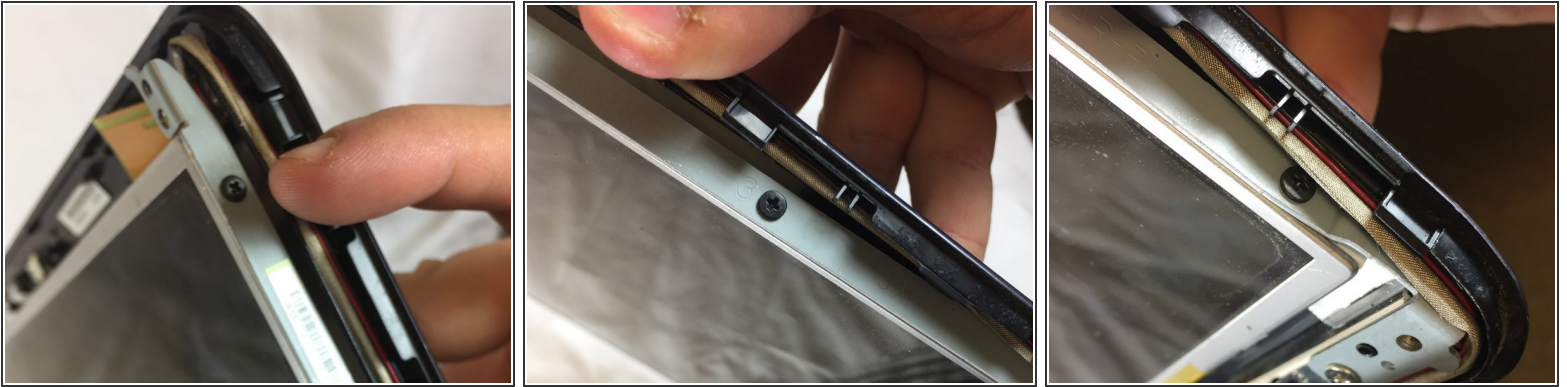
- First, remove the four rubber screw coverings located at the top corners and bottom corners of the screen.
- Remove the four screws underneath each cover and place them somewhere secure.

Step 2



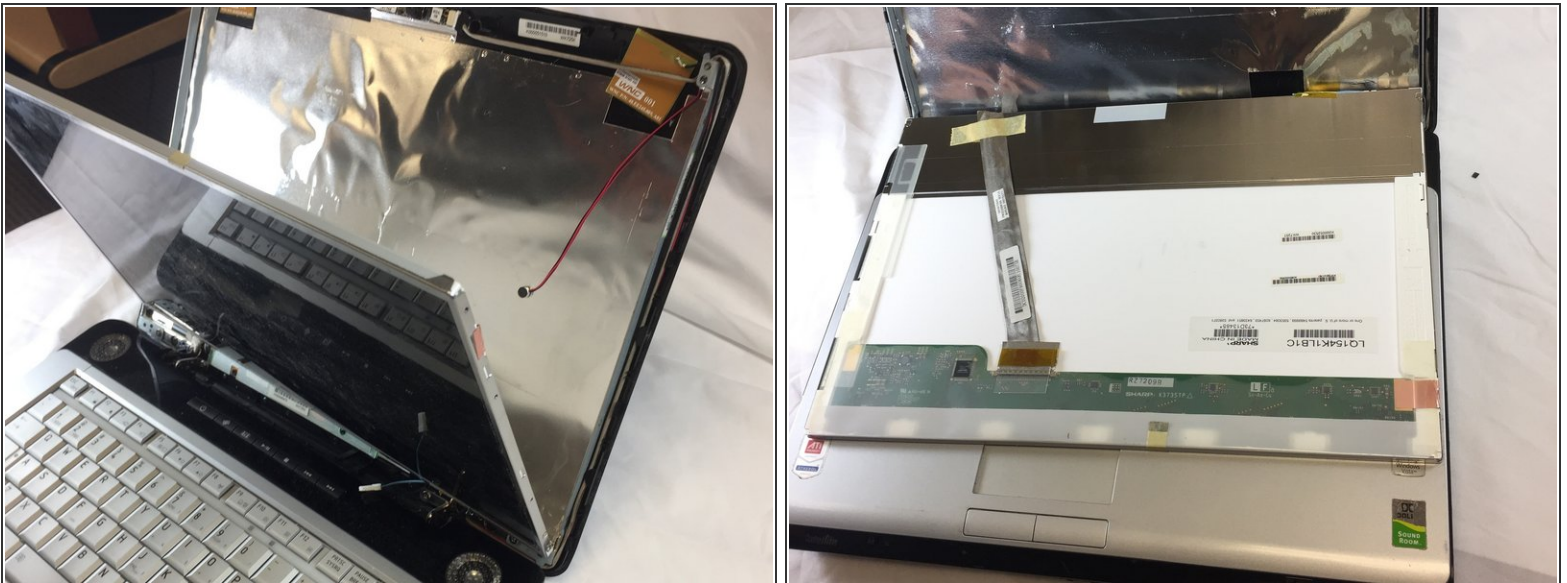
- Remove the plastic paneling around the screen, and at the bottom of the display.
- ⓘ You may need a plastic opening tool to pry the back crease open.

Step 3



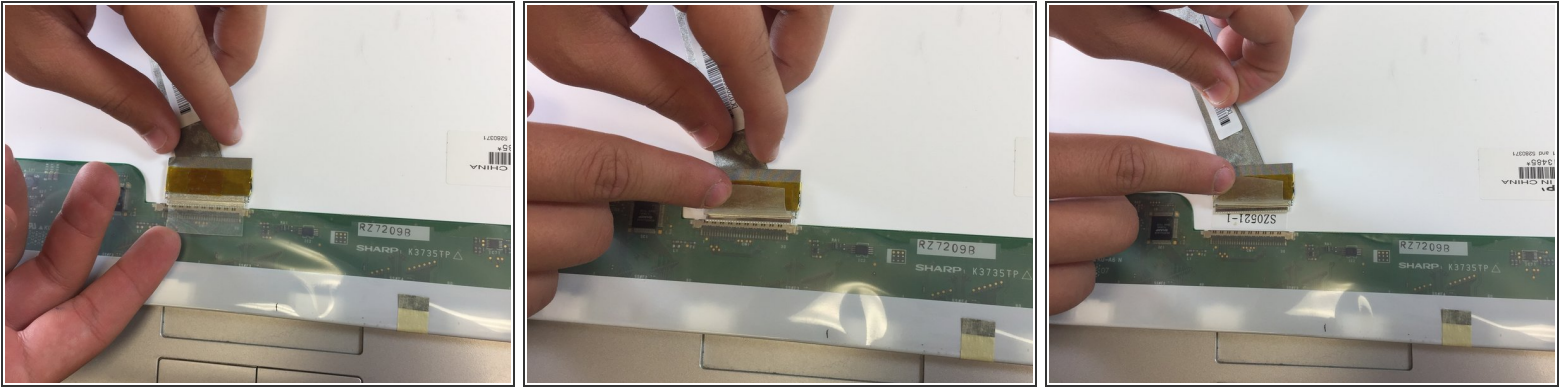
- Remove the three screws on each side of the display, and place them somewhere secure.

Step 4



- Gently move the display forward so you can see the back of the component.

Step 5



- On the back of the display, there is a wire that is plugged in to the display and secured with tape.
- Gently lift the tape, leaving it attached to the wire.
- Pull the wire out of its socket in the display backing.
- The display is now fully detached!

To reassemble your device, follow these instructions in reverse order.