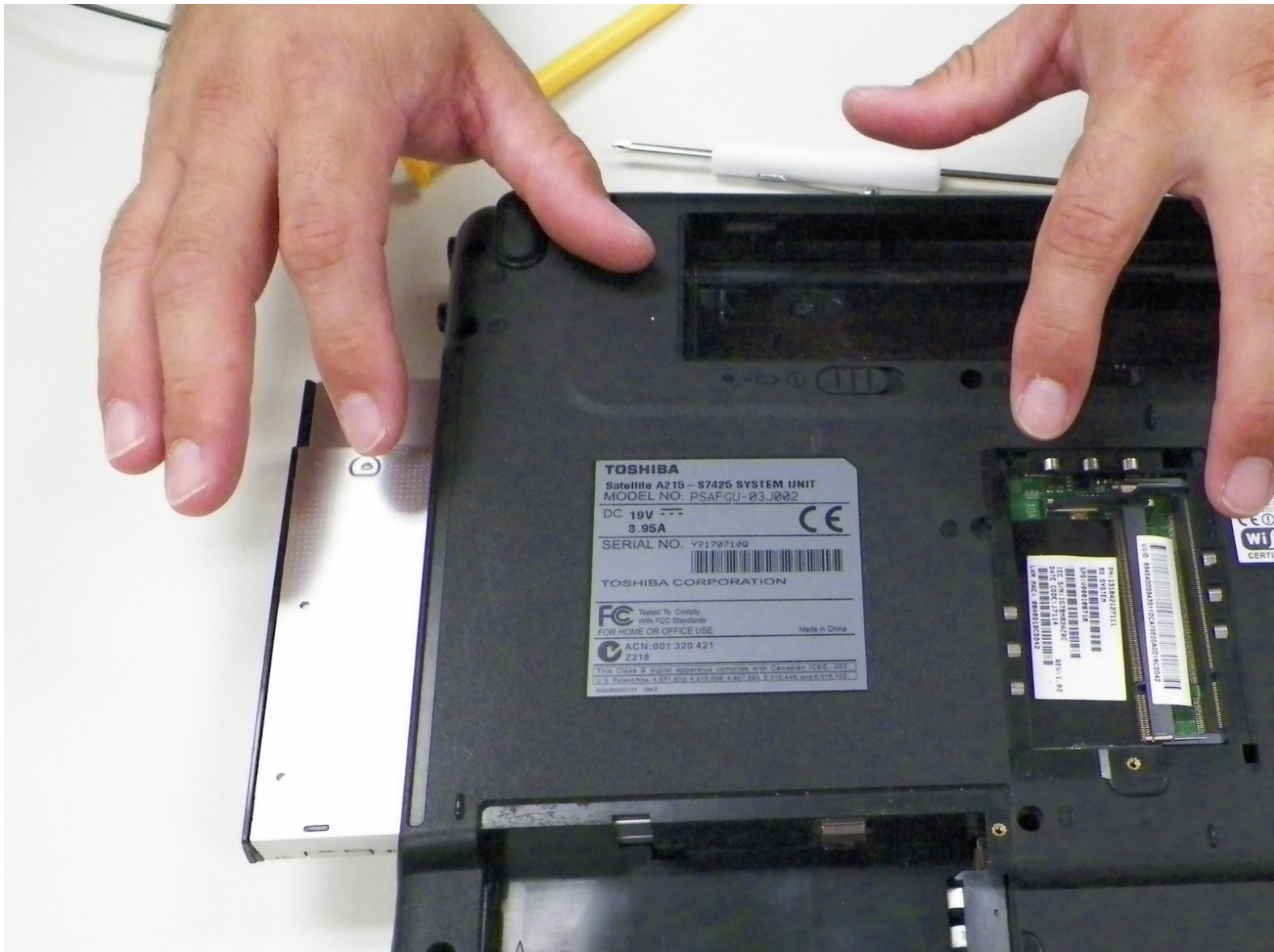




# Toshiba Satellite A215-S7425 Optical Drive Replacement

This guide is for Toshiba Satellite A215-S7425 Optical Drive removal

Written By: Marianne

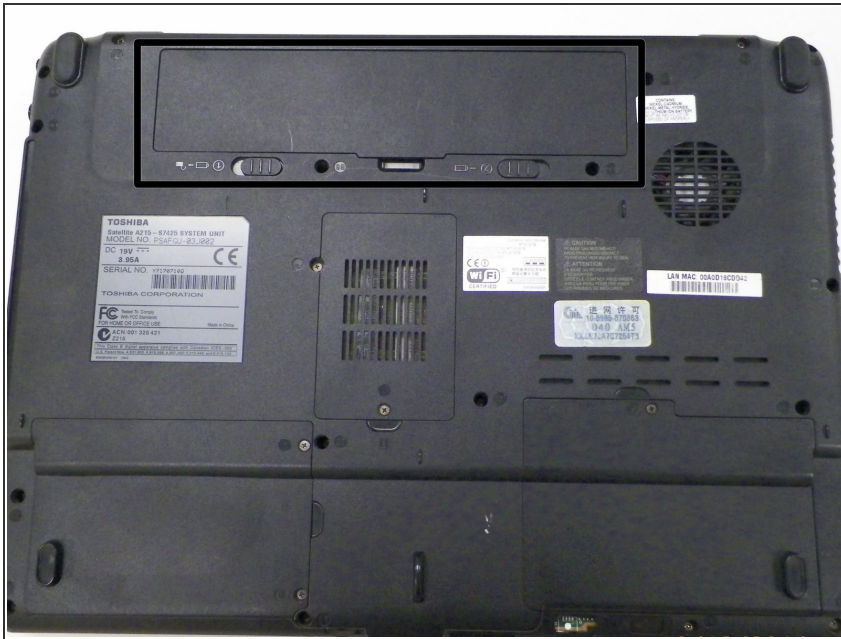




## TOOLS:

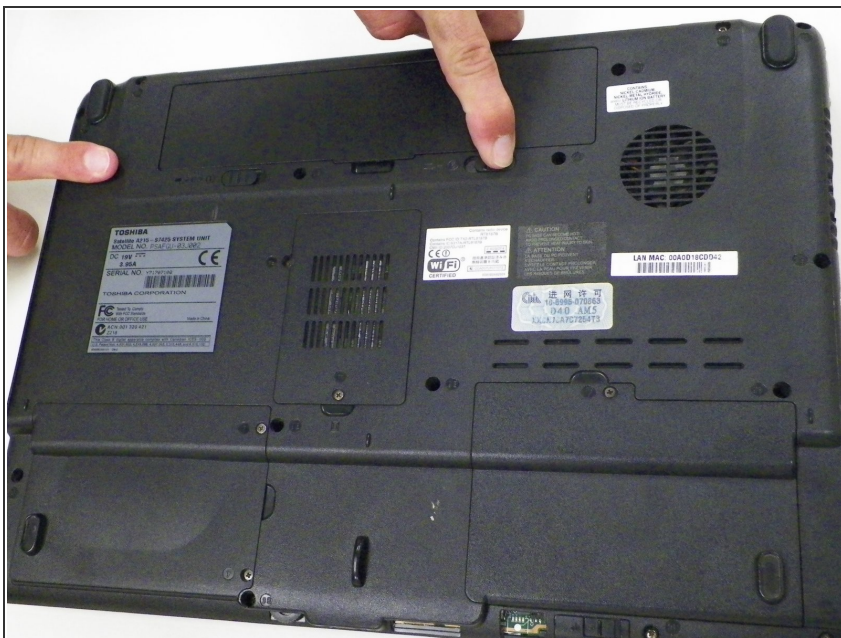
- [Phillips #1 Screwdriver](#) (1)
-

## Step 1 — Battery



- Turn off the computer.
- Disconnect the charging cable from computer.
- ⚠ Failure to unplug the cable could result in electric shock.
- Flip the computer upside down.

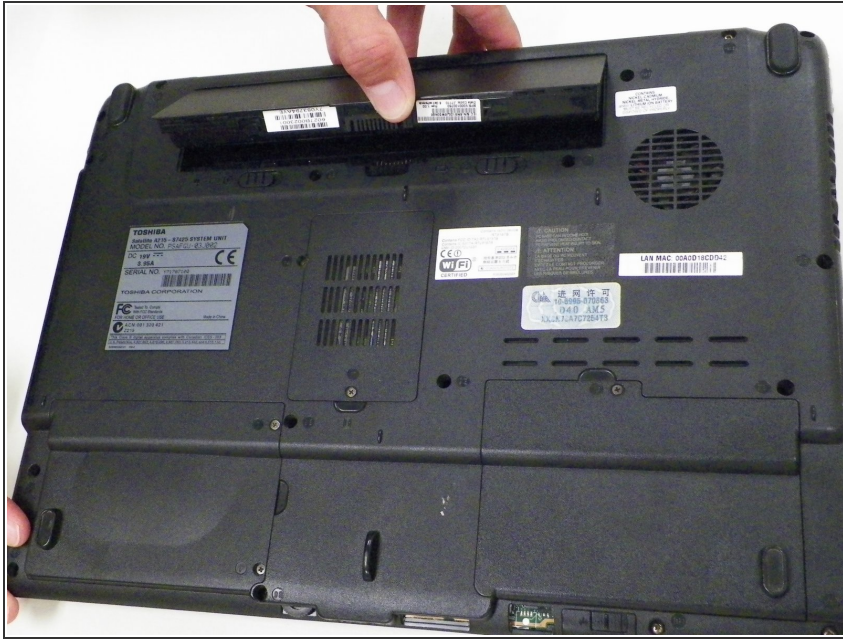
## Step 2



- Slide latches labeled #1 and #2, located outside the battery cover, away from each other.
- ⓘ Latch #1 will click over and stay while latch #2 will have to be held for battery to release.

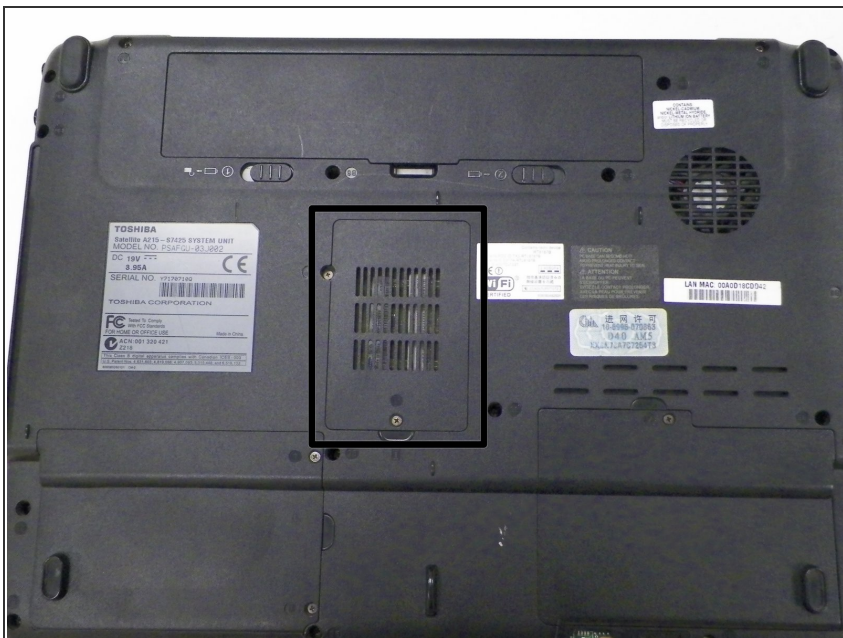


## Step 3



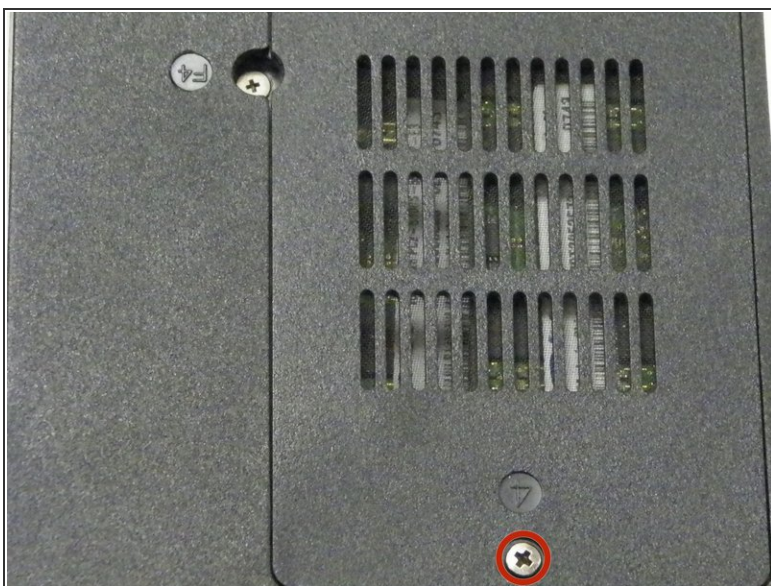
- Gently lift and pull the battery out of the device.

## Step 4 — RAM



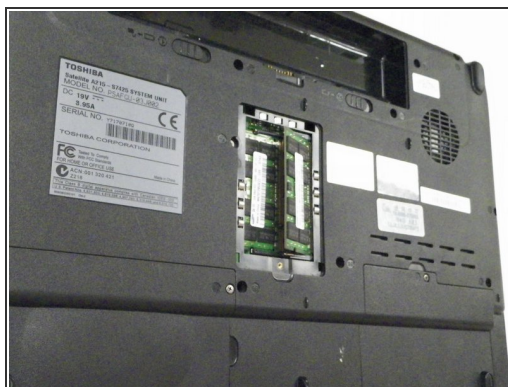
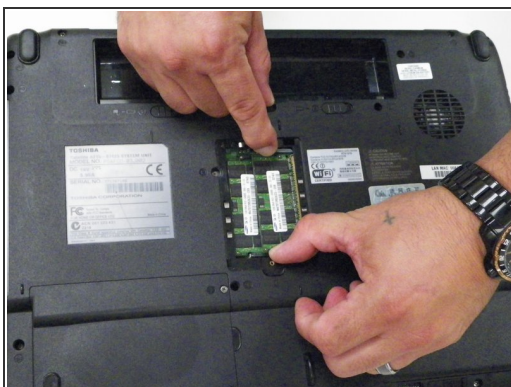
- Locate the RAM vented plastic cover in the center of the device.

## Step 5



- Loosen 1 Phillips 4.2 mm size captive screw and lift cover off device to expose 2 RAM sticks.

## Step 6



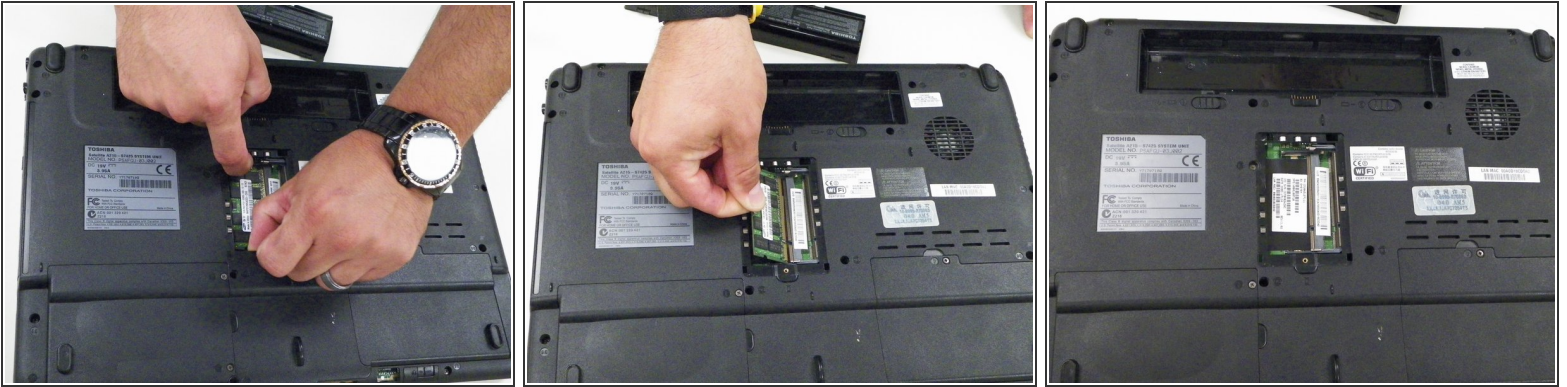
- Locate 2 metal pinchers on either side of the 1st RAM stick.
- Use a finger from each hand to push the 2 pinchers simultaneously away from the stick of RAM and towards the exterior of the case.
- The RAM stick will automatically rise up. Gently pull out the RAM stick with one hand.



The use of a anti-static wrist strap while working with the RAM is advise to prevent electrostatic discharge(ESD) from damaging the RAM.

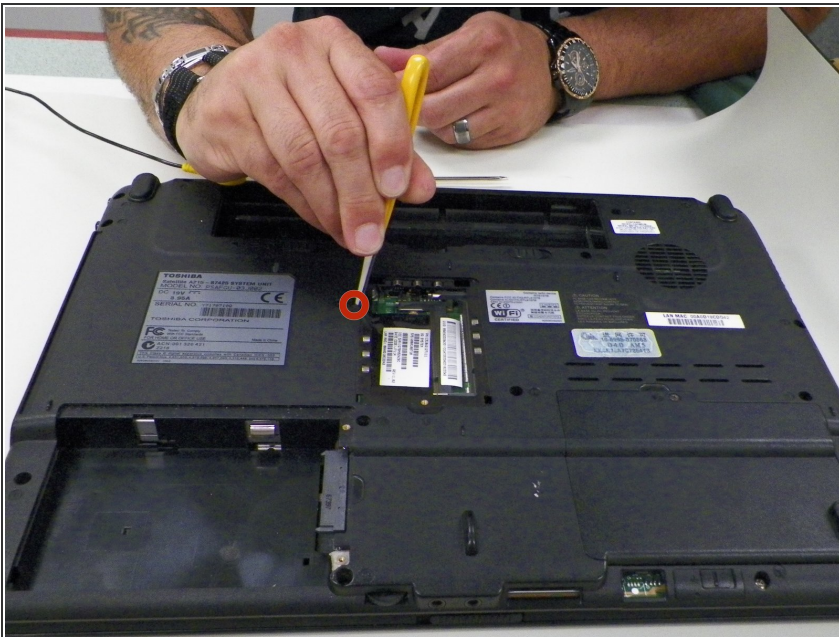


## Step 7



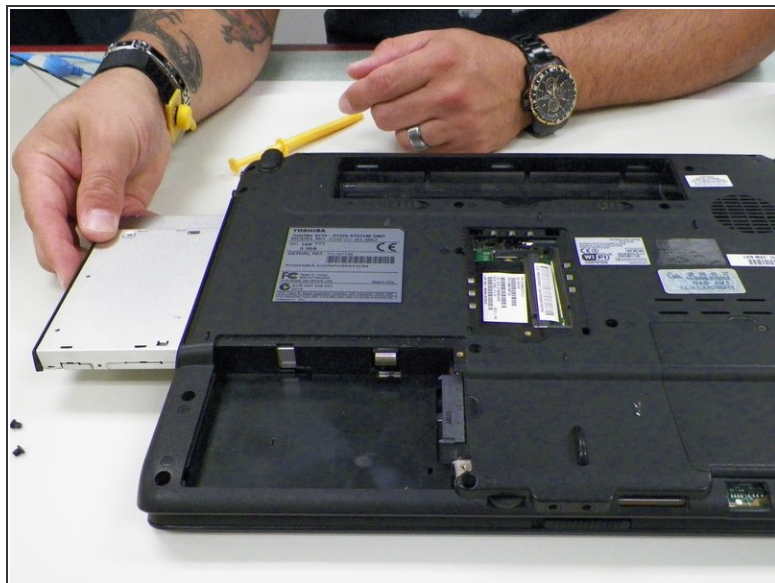
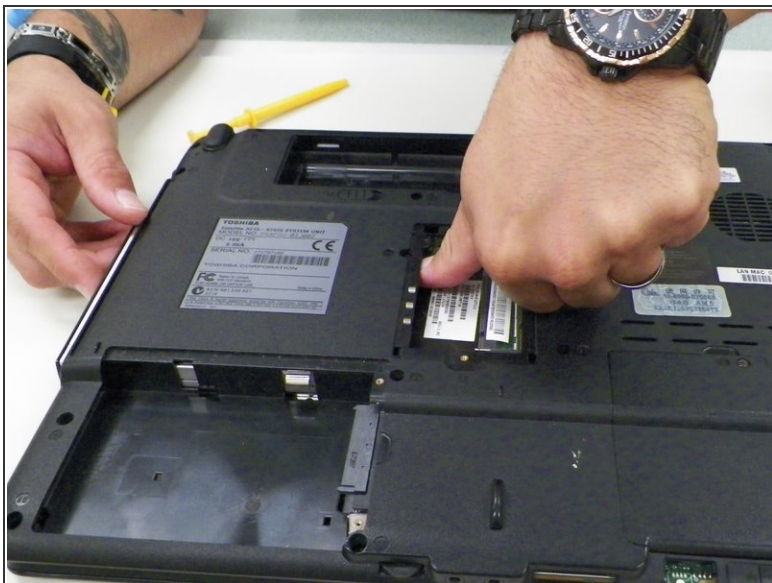
- To remove the 2nd RAM stick, repeat previous steps.
- ⓘ You will be unable to remove 2nd RAM stick if the first one is not removed first.

## Step 8 — Optical Drive



- Locate and remove 1 Phillips 4.2 mm size screw along right side of RAM container.
- ⓘ Tweezers may be needed to lift out the screw.

## Step 9



- Push down metal rod until optical drive pops out from its container on the side of the device.

⚠ To avoid damage to your RAM, make sure RAM is removed and out of the way before beginning this step.

To reassemble your device, follow these instructions in reverse order.