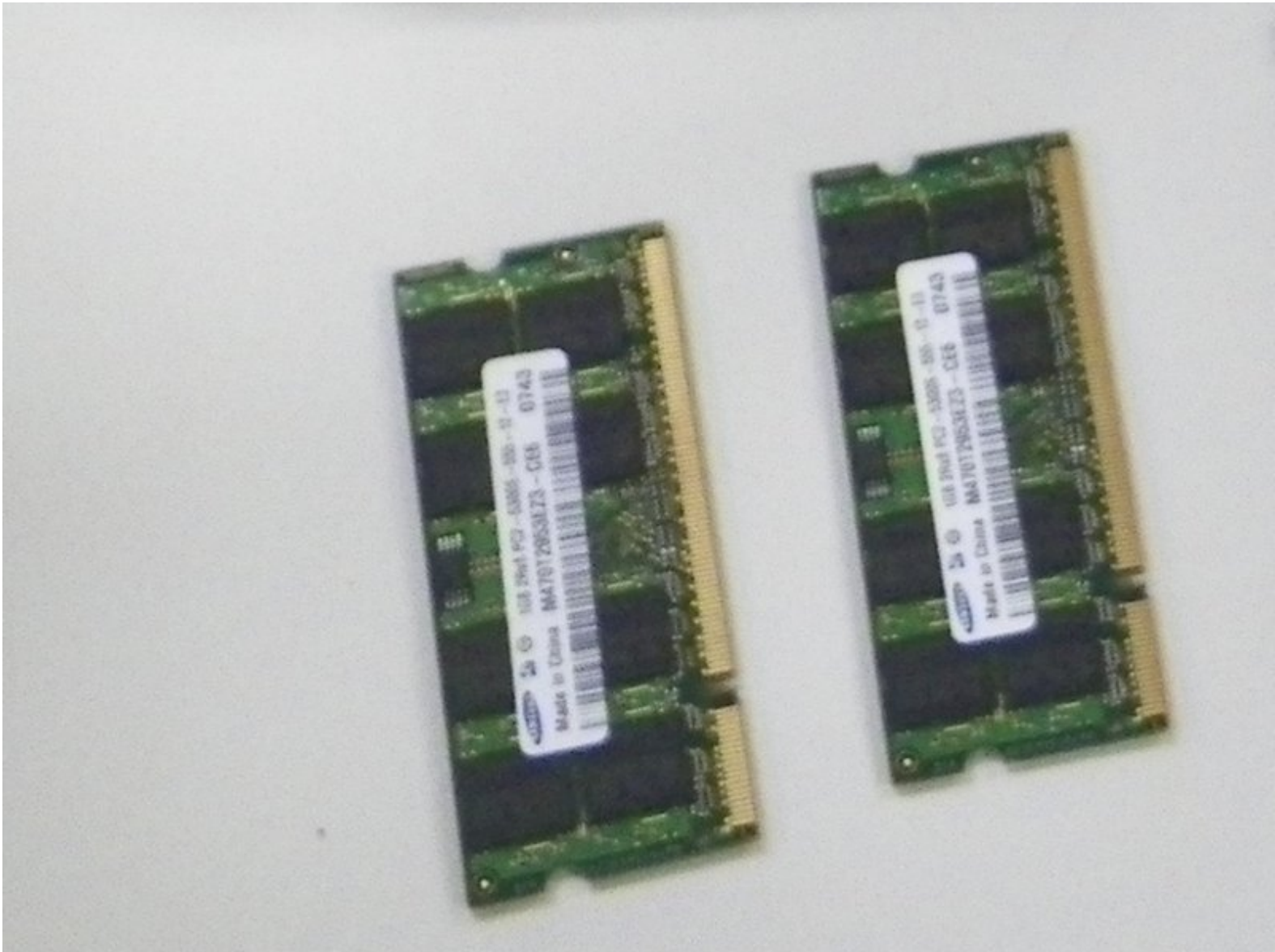




Toshiba Satellite A215-S7425 RAM Replacement

This guide is for Toshiba Satellite A215-S7425 RAM replacement.

Written By: Marianne

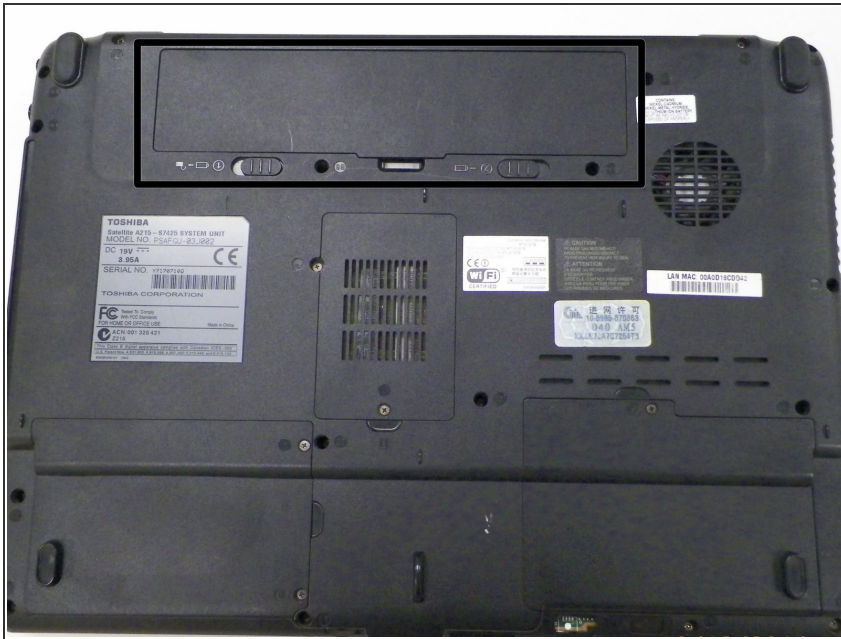




TOOLS:

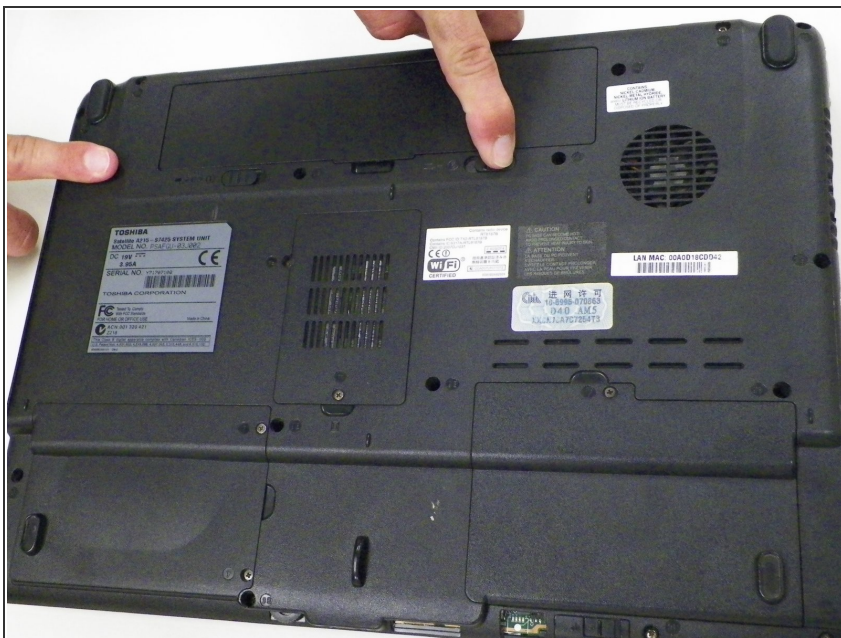
- [Phillips #1 Screwdriver](#) (1)
 - [Anti-Static Wrist Strap](#) (1)
-

Step 1 — Battery



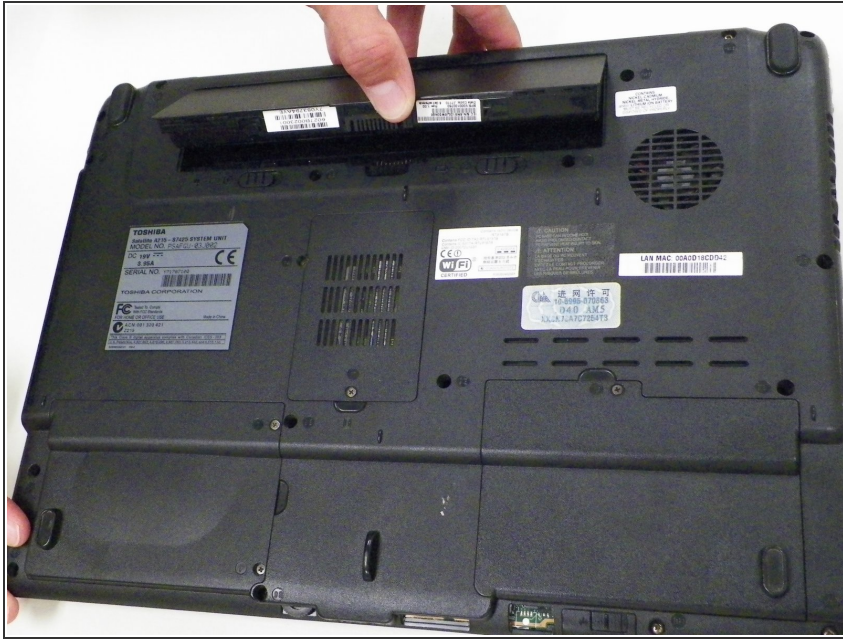
- Turn off the computer.
- Disconnect the charging cable from computer.
- ⚠ Failure to unplug the cable could result in electric shock.
- Flip the computer upside down.

Step 2



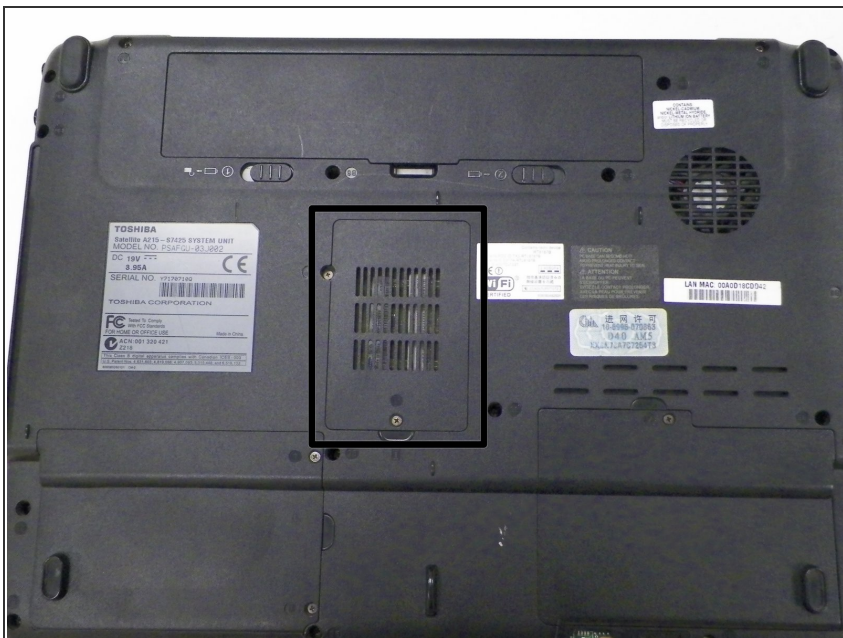
- Slide latches labeled #1 and #2, located outside the battery cover, away from each other.
- ⓘ Latch #1 will click over and stay while latch #2 will have to be held for battery to release.

Step 3



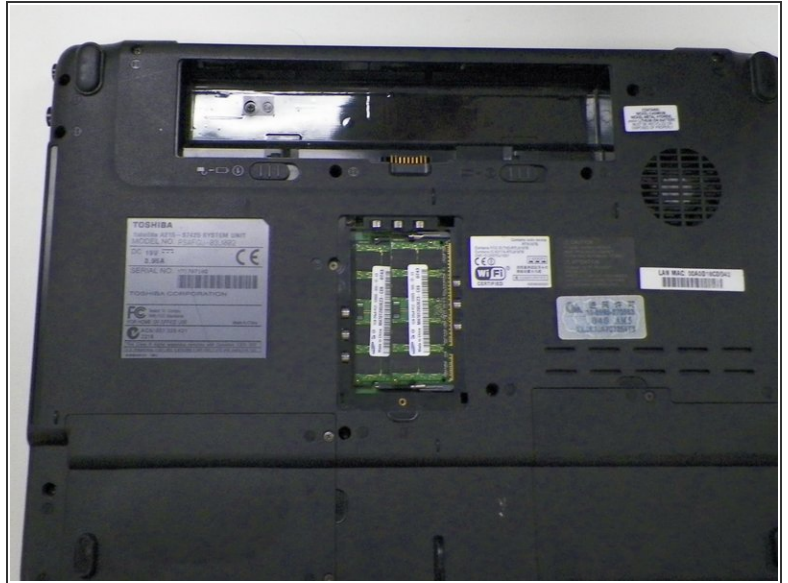
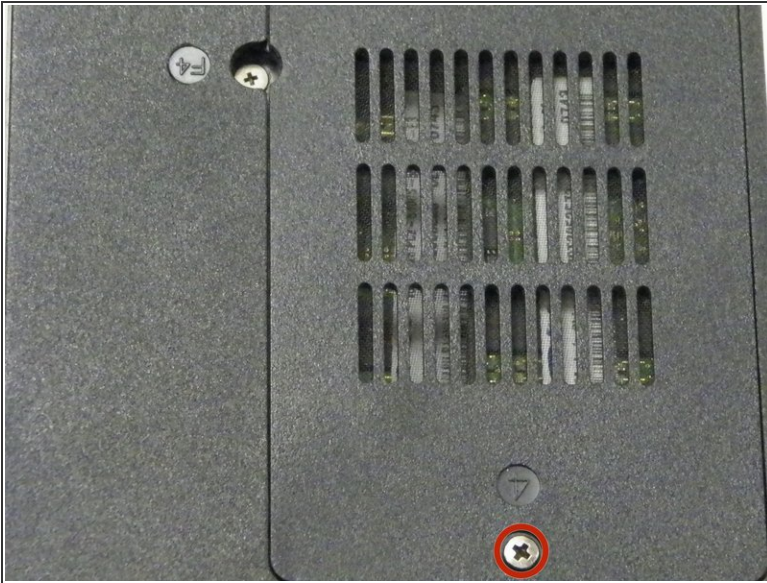
- Gently lift and pull the battery out of the device.

Step 4 — RAM



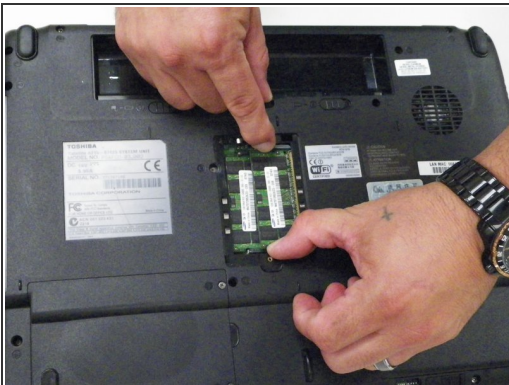
- Locate the RAM vented plastic cover in the center of the device.

Step 5




- Loosen 1 Phillips 4.2 mm size captive screw and lift cover off device to expose 2 RAM sticks.

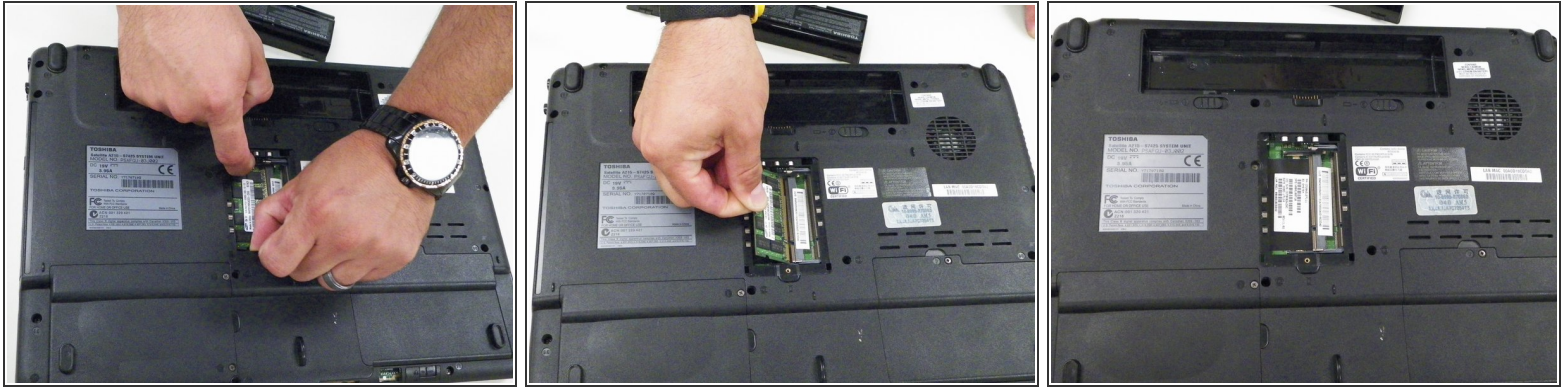
Step 6



- Locate 2 metal pinchers on either side of the 1st RAM stick.
- Use a finger from each hand to push the 2 pinchers simultaneously away from the stick of RAM and towards the exterior of the case.
- The RAM stick will automatically rise up. Gently pull out the RAM stick with one hand.

 The use of a anti-static wrist strap while working with the RAM is advise to prevent electrostatic discharge(ESD) from damaging the RAM.

Step 7



- To remove the 2nd RAM stick, repeat previous steps.

 You will be unable to remove 2nd RAM stick if the first one is not removed first.

To reassemble your device, follow these instructions in reverse order.