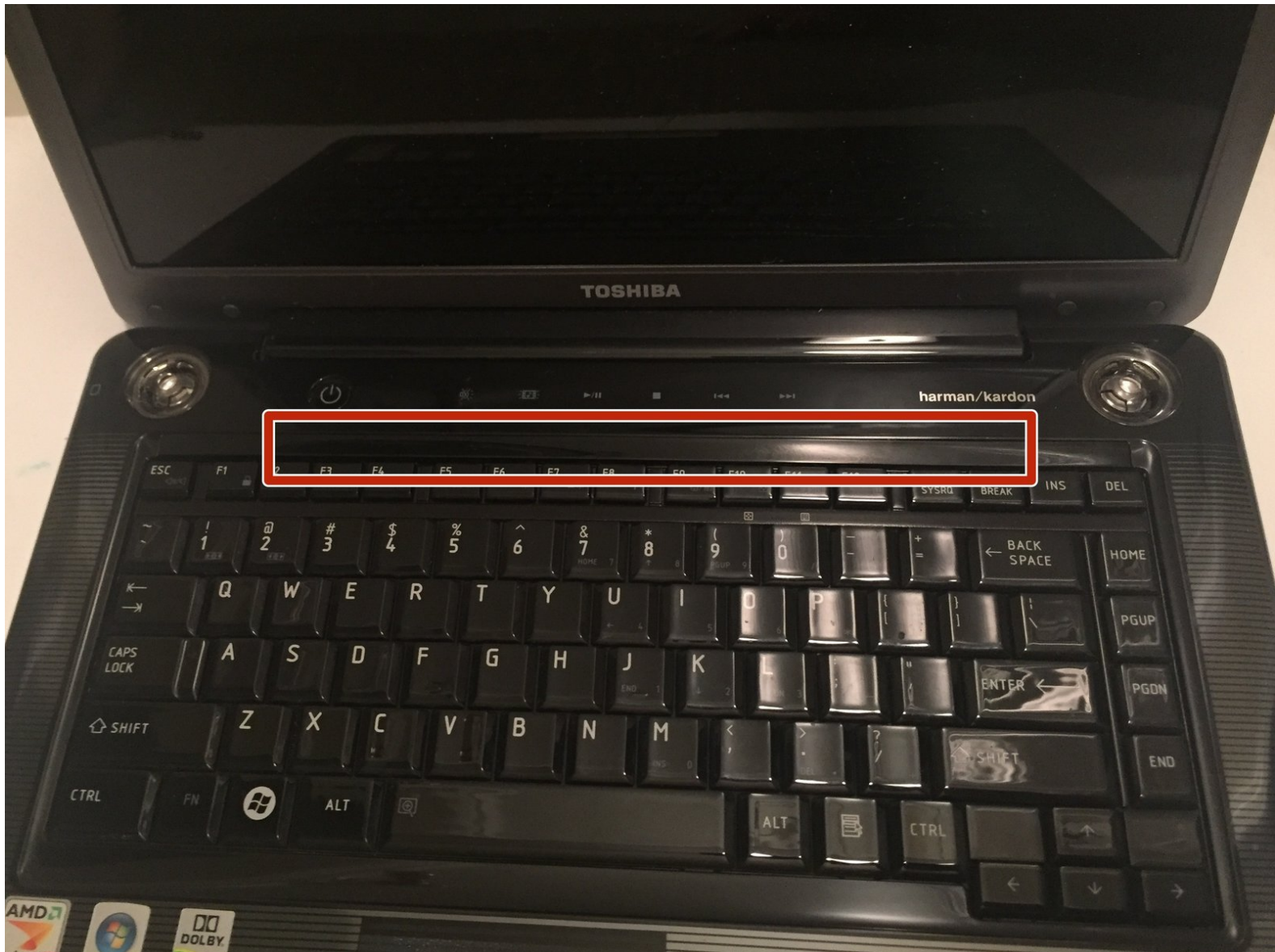




Toshiba Satellite A305-S6848 Keyboard Replacement

Replace the keyboard to fix any keyboard dysfunctions.

Written By: Joshua E Hong



INTRODUCTION

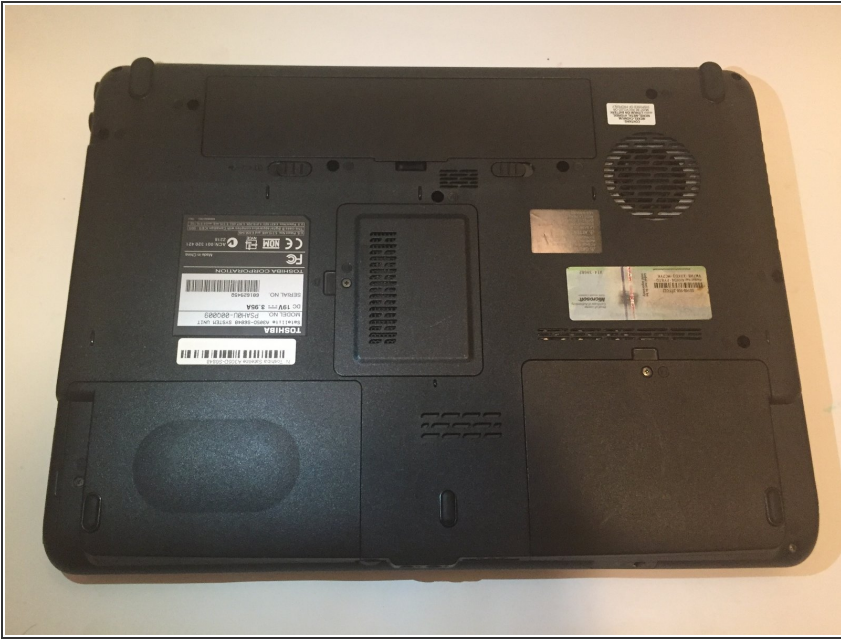
This guide teaches you how to replace the battery in a Toshiba Satellite A305-S6848 laptop.



TOOLS:

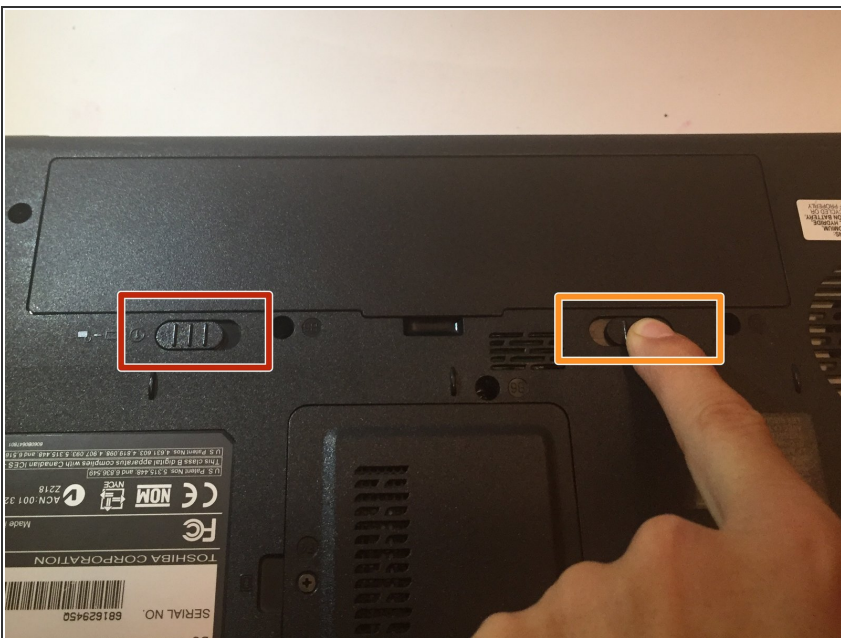
- [Metal Spudger](#) (1)
 - [Phillips #0 Screwdriver](#) (1)
-

Step 1 — Battery



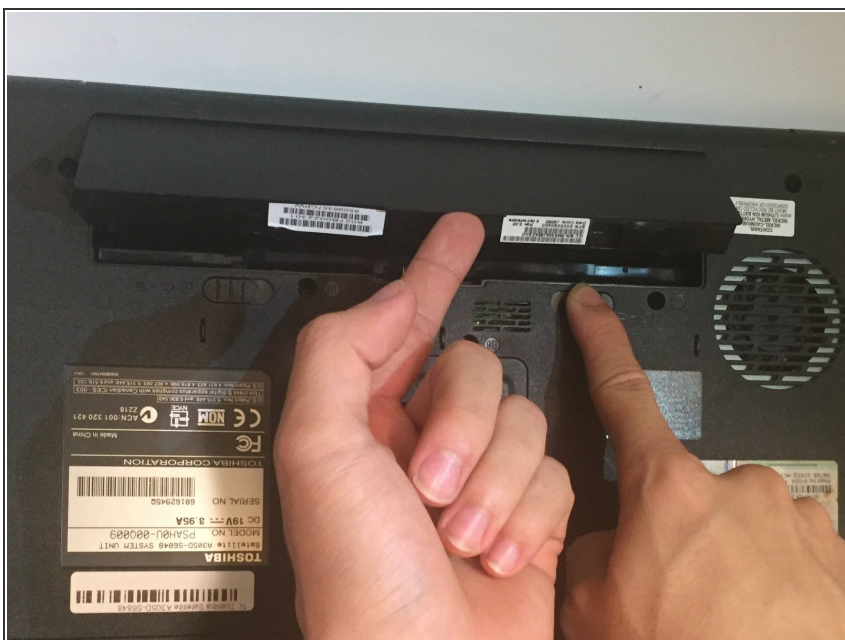
- Close laptop and turn it upside down.

Step 2



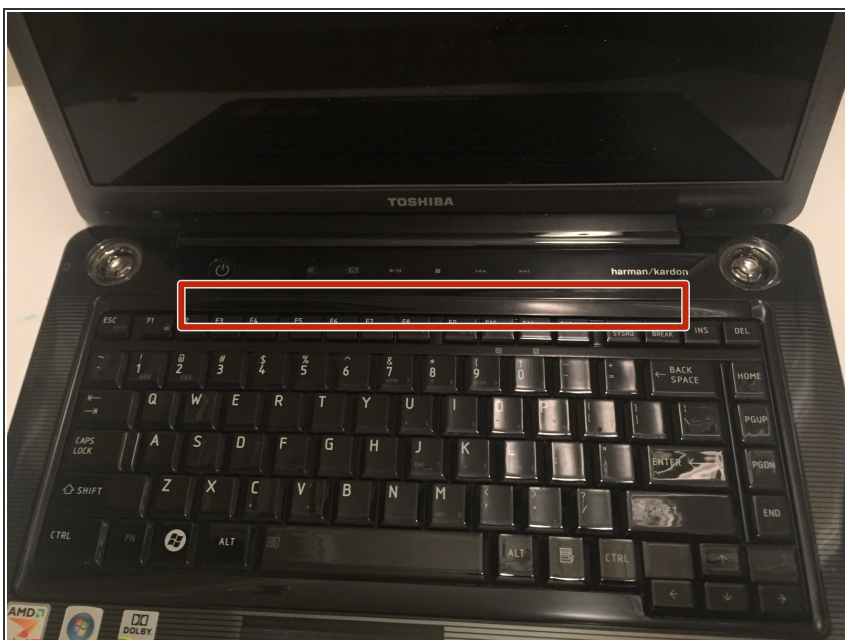
- Move the left locking hatch to the left.
- Hold the right spring latch to the right.

Step 3



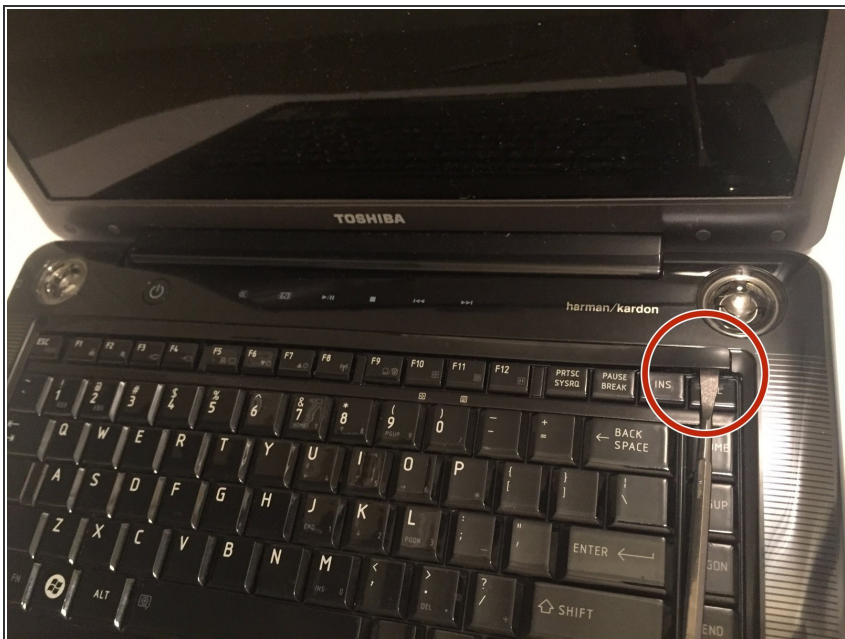
- Carefully remove the battery from the laptop.

Step 4 — Keyboard



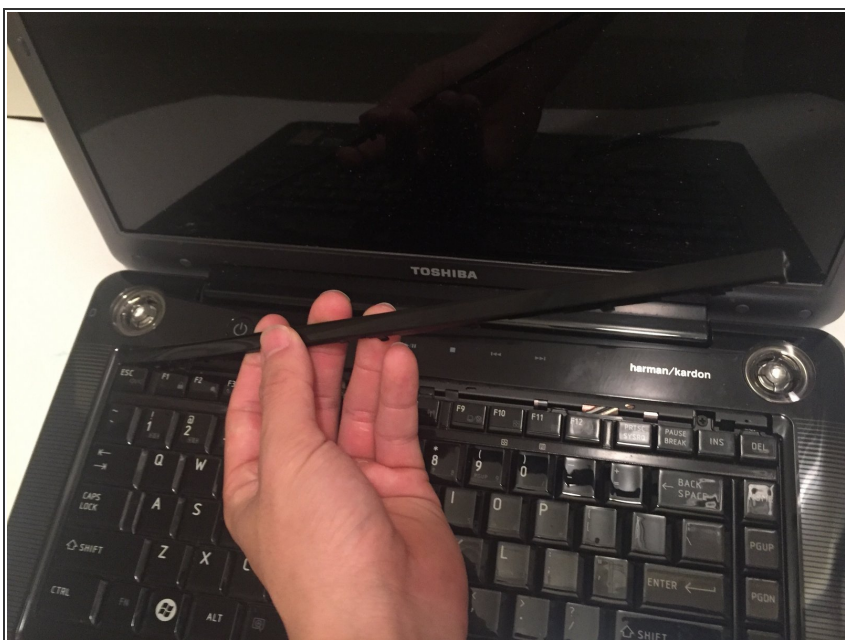
- The keyboard is held in by a locking strip between the screen and the keyboard.

Step 5



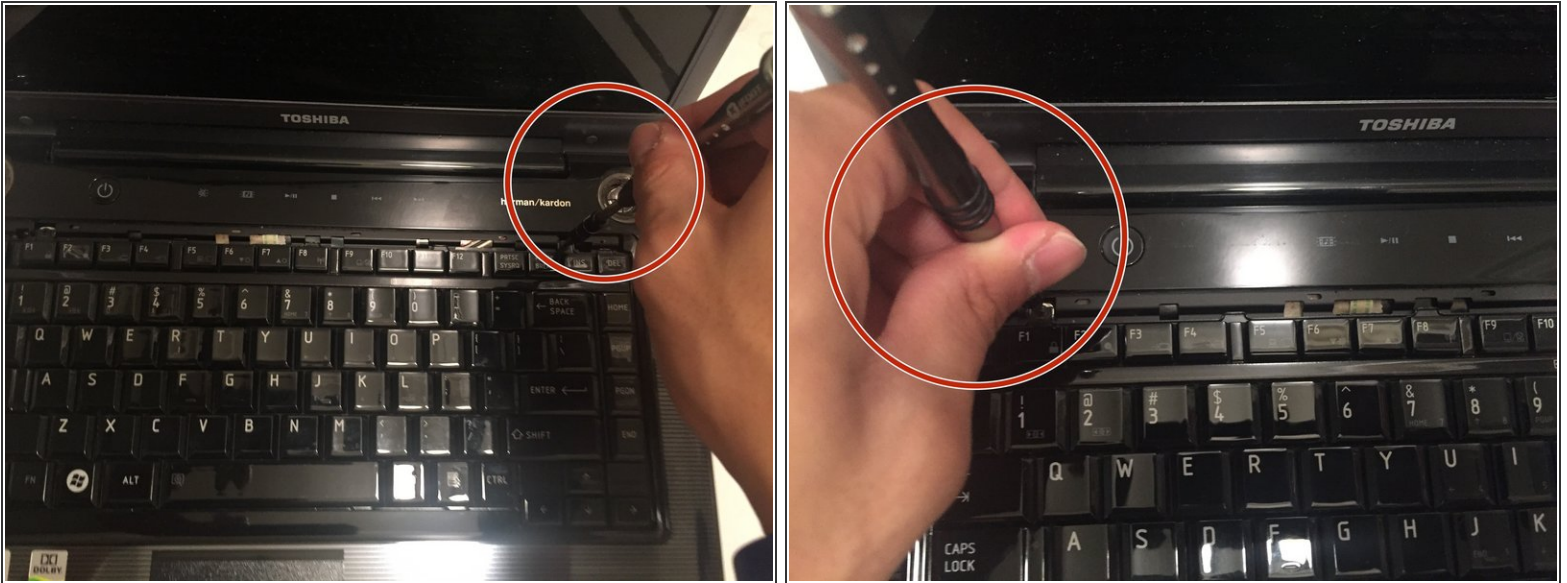
- Use the metal spudger to pry out the right portion of the locking piece just above the DEL key.

Step 6



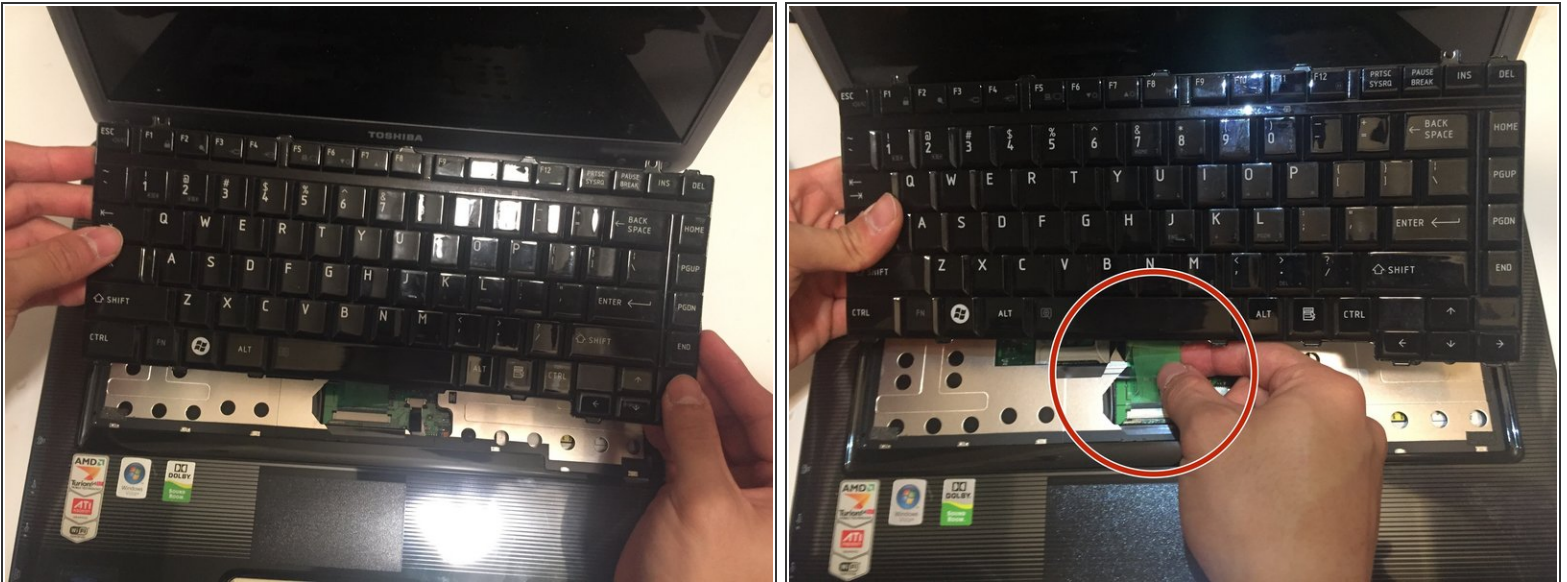
- Use your hand to take out locking strip from the right portion that was pried out.

Step 7



- Use the Phillip's #0 screwdriver to take out the two 5.8 mm Phillip's #0 screws from the top right and left corners of the keyboard.

Step 8



- Lift the keyboard up slightly. Use caution as the keyboard ribbon cable is still attached below the keyboard.
- Disconnect the keyboard by flipping the locking clip upwards.

This document was generated on 2019-10-11 12:37:03 PM (MST).

To reassemble your device, follow these instructions in reverse order.