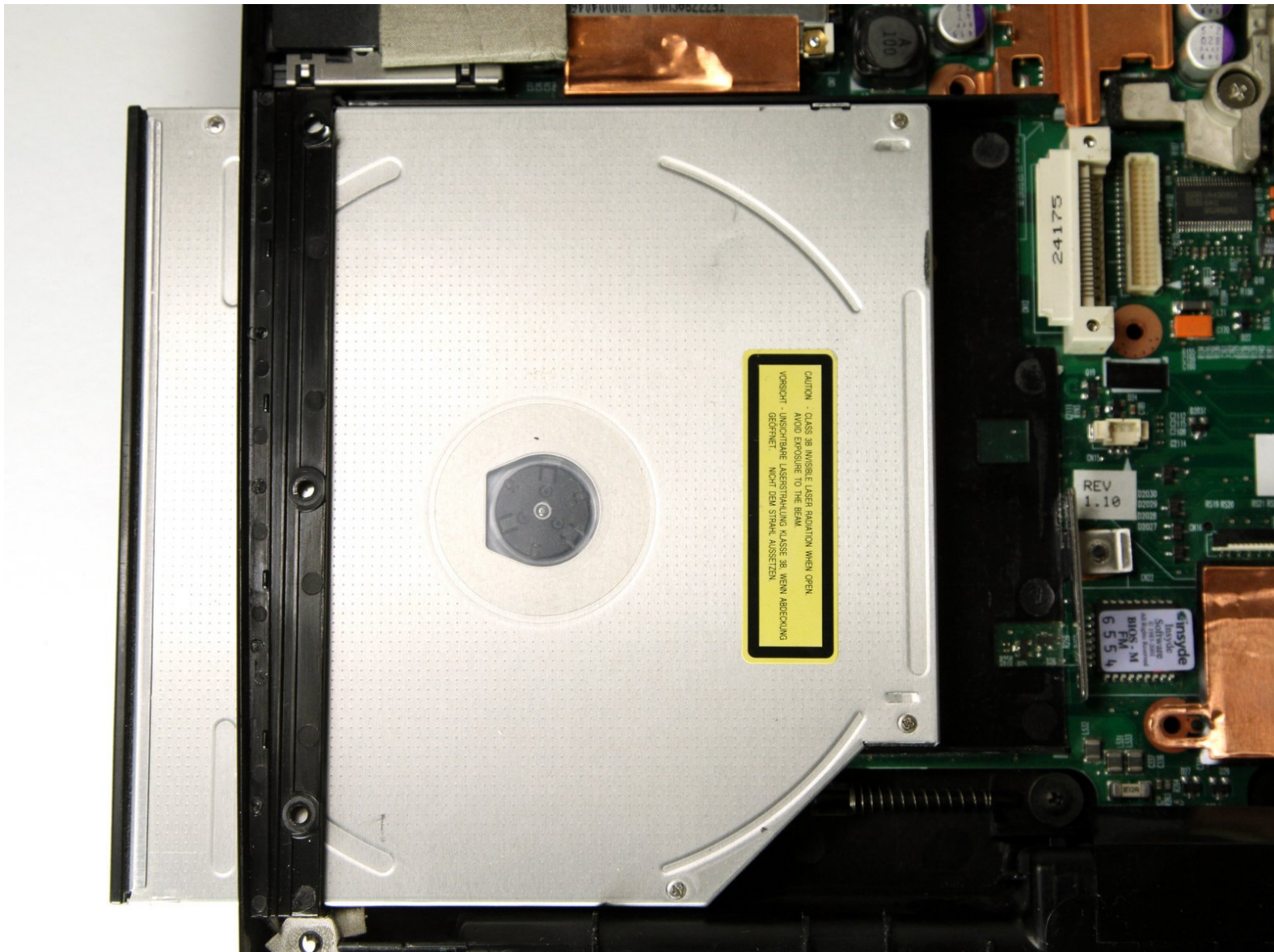




# Toshiba Satellite A65-S126 Optical Drive Replacement

Replace a broken optical drive on a Toshiba A65-S126.

Written By: Geoff Wacker



---

## INTRODUCTION

This guide provides step by step instructions of how to replace a faulty optical drive.

---



### TOOLS:

- [Phillips #00 Screwdriver](#) (1)
  - [iFixit Opening Tools](#) (1)
-

## Step 1 — Battery



- Flip the laptop over so the bottom is facing up.
- Slide each of the three tabs on the bottom half of the assembly into the unlocked position.

## Step 2



- Gently lift the battery out of the computer.

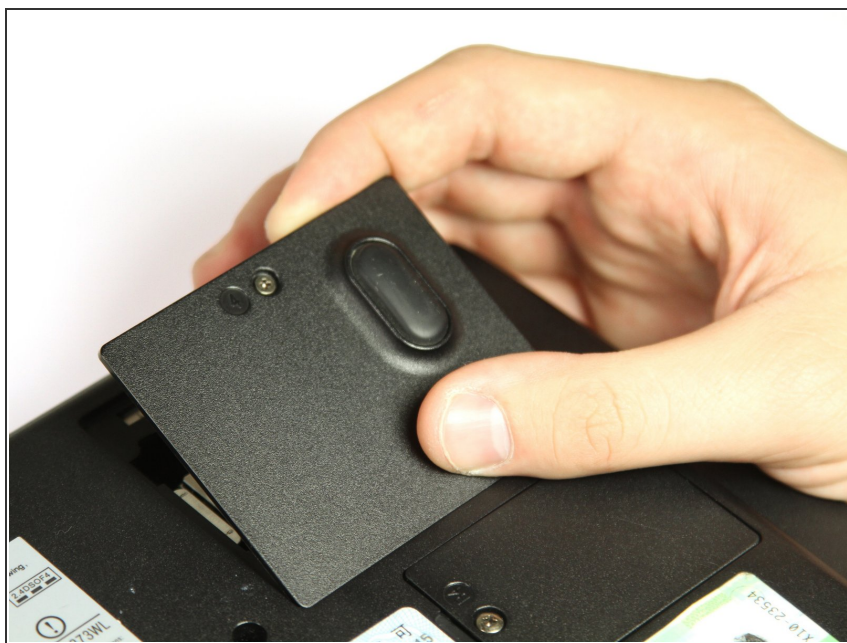


## Step 3 — Upper Assembly



- Remove the single 3mm Phillips #00 screw that secures the wireless card cover.

## Step 4



- Remove the WIFI module cover. It will pull right off.

## Step 5



- Unplug the white and black wires from the WiFi module.

## Step 6



- Remove the twelve 8mm button head Phillips #00 B8 screws.
- Remove the two 14 mm button head Phillips #00 B14 screws.
- Remove the two 10 mm Phillips #00 battery compartment screws.
- Remove the two 8 mm Phillips #00 screws.



## Step 7



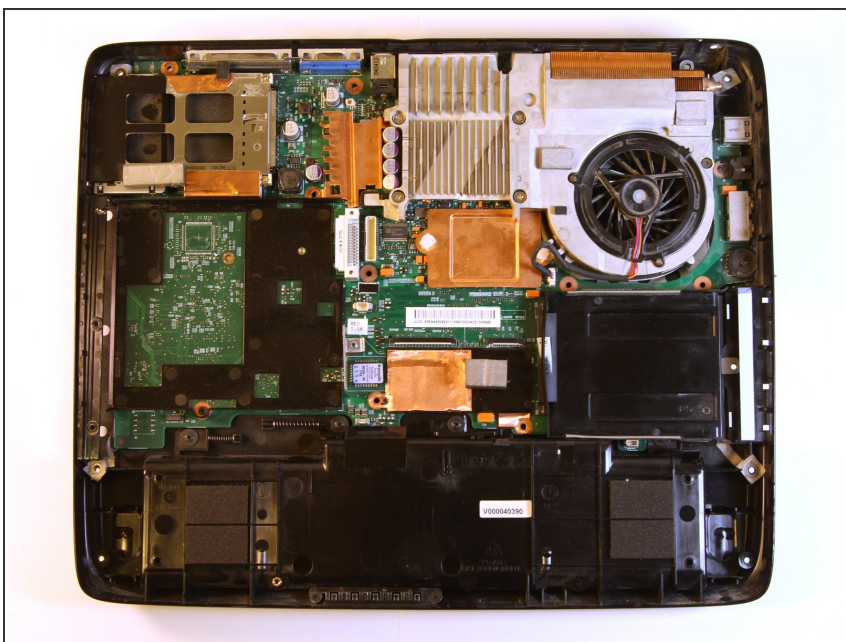
- Remove the seven 4mm flat Phillips #00 screws.
- Remove the seven 20mm button head Phillips #00 screws.

## Step 8



- Use the plastic opening tool to pry the two halves apart.

## Step 9 — Optical Drive



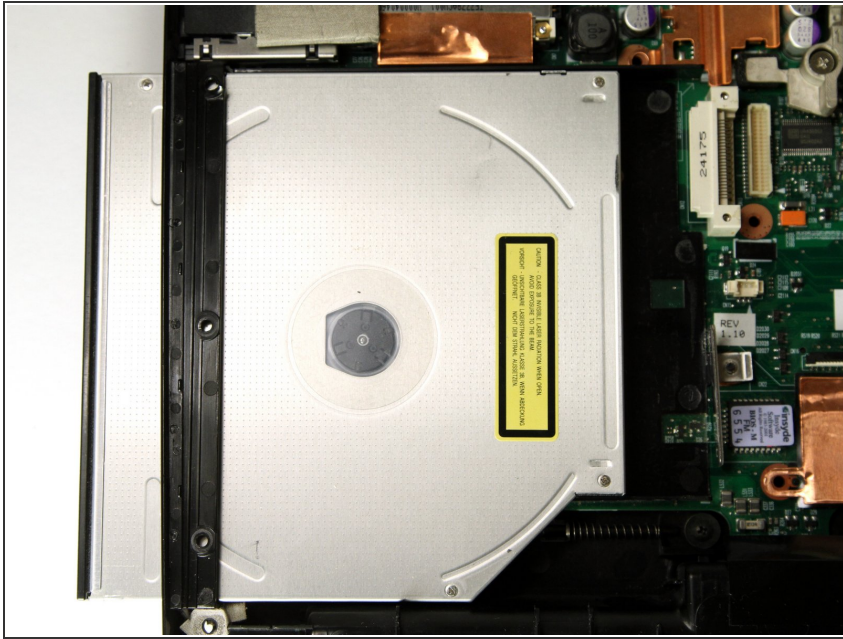
- Orient the bottom assembly as displayed.

## Step 10



- Remove the two 3 mm Phillips #00 screws.

## Step 11



- Slide the optical drive out of the laptop through the opening on the left side of the bottom assembly.

To reassemble your device, follow these instructions in reverse order.