



Toshiba Satellite A660-ST3NX2X RAM Replacement

This replacement guide will show you step-by-step how to replace faulty RAM in your Toshiba Satellite A660-ST3NX2X.

Written By: Cassie Pickett



INTRODUCTION

This replacement guide is to walk you through a RAM replacement on your Toshiba Satellite A660-ST3NX2X. Before starting this replacement, make sure you have a replacement RAM stick that is made for this computer and model. Also, make sure the computer is powered off and completely shut down before completing this replacement.



TOOLS:

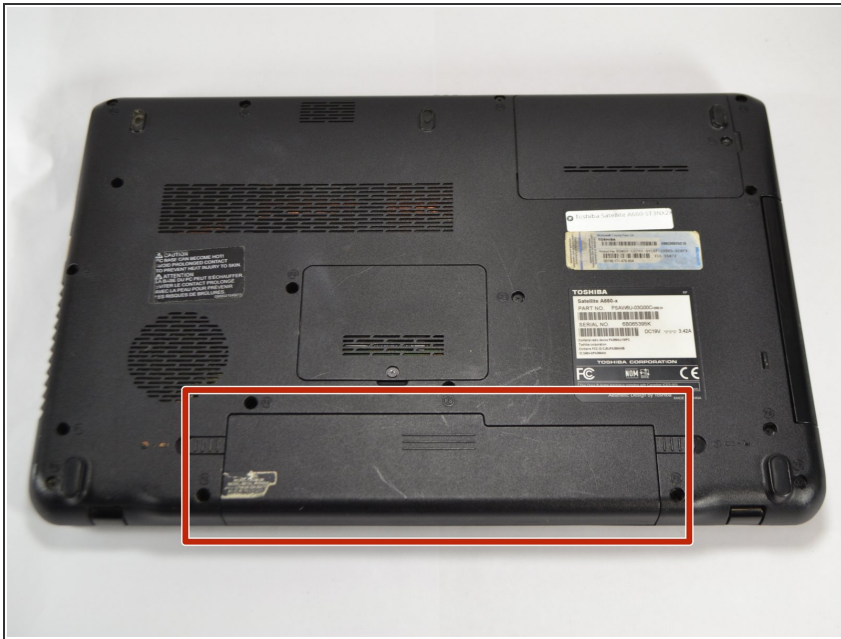
- [JIS Driver Set](#) (1)
J00



PARTS:

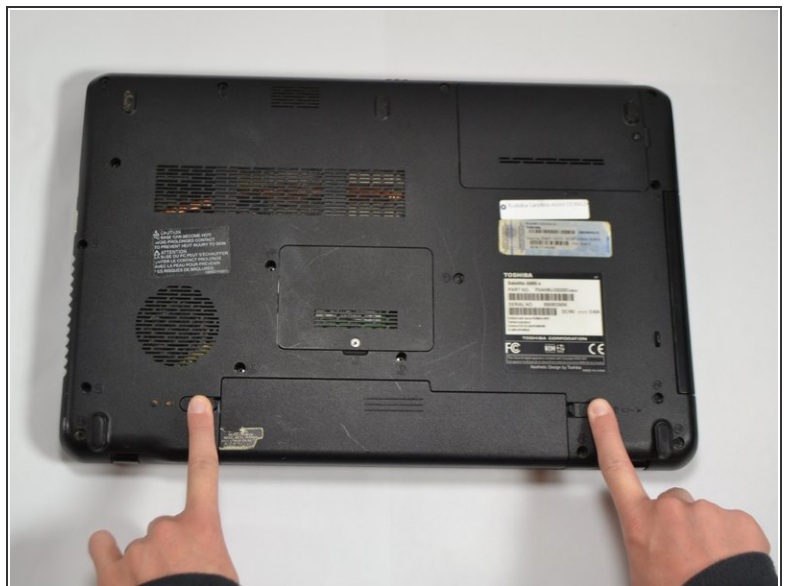
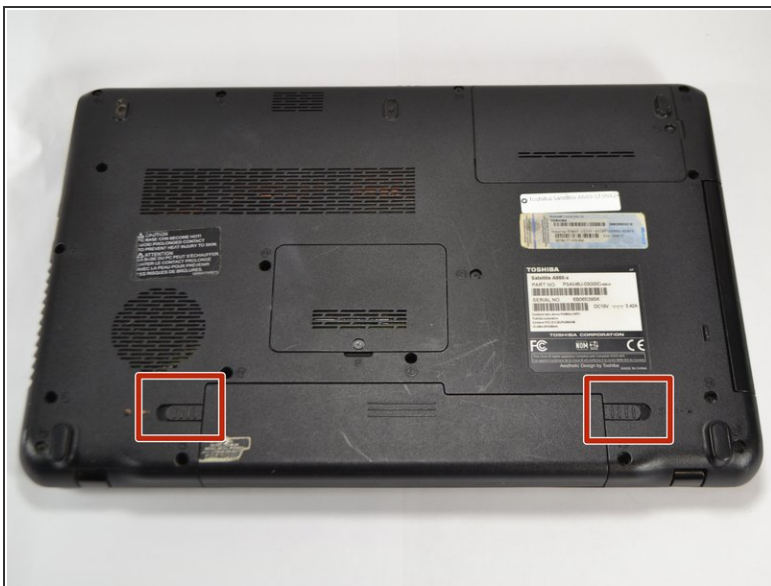
- [PC2-6400 4 GB RAM Chip](#) (1)

Step 1 — Battery



- ⚠️ Unplug all cables and other devices from the computer before starting this replacement.
- Turn the computer over, so the screen is facing down and the battery is positioned in front of you.

Step 2



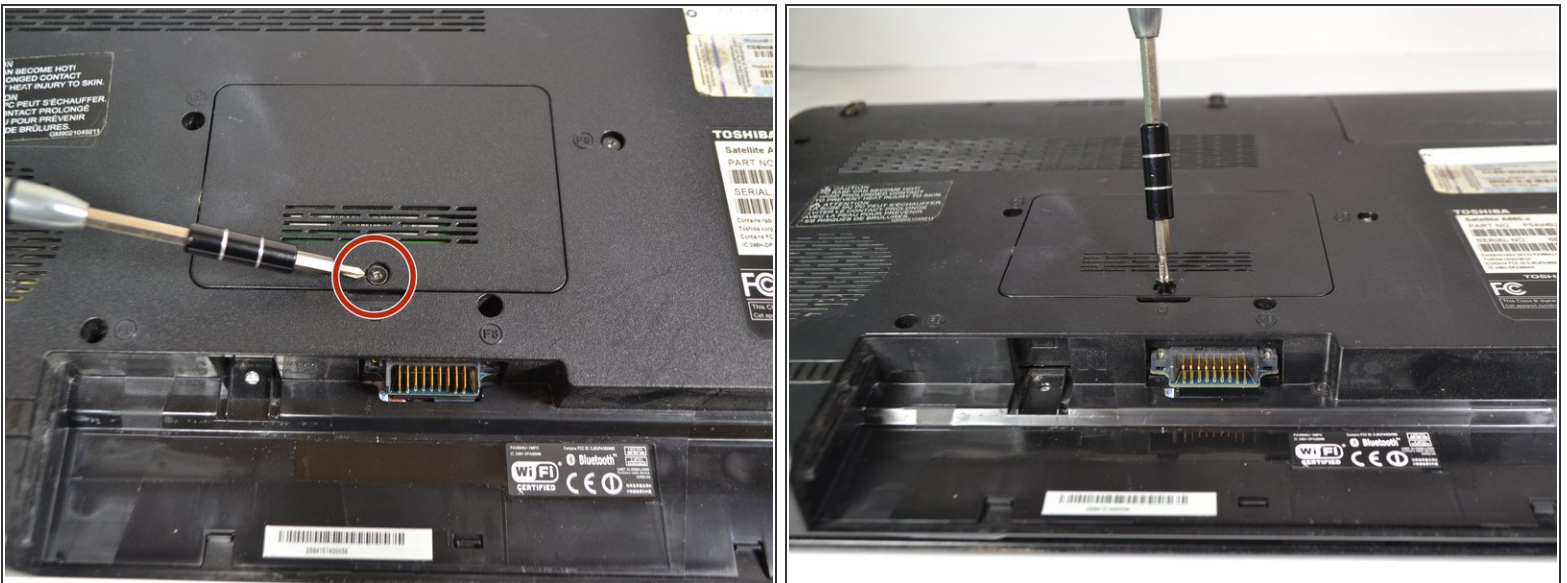
- Locate the two sliding tabs on either side of the battery.
- Using both hands, place one finger on each tab and slide them to the sides and away from each other.

Step 3



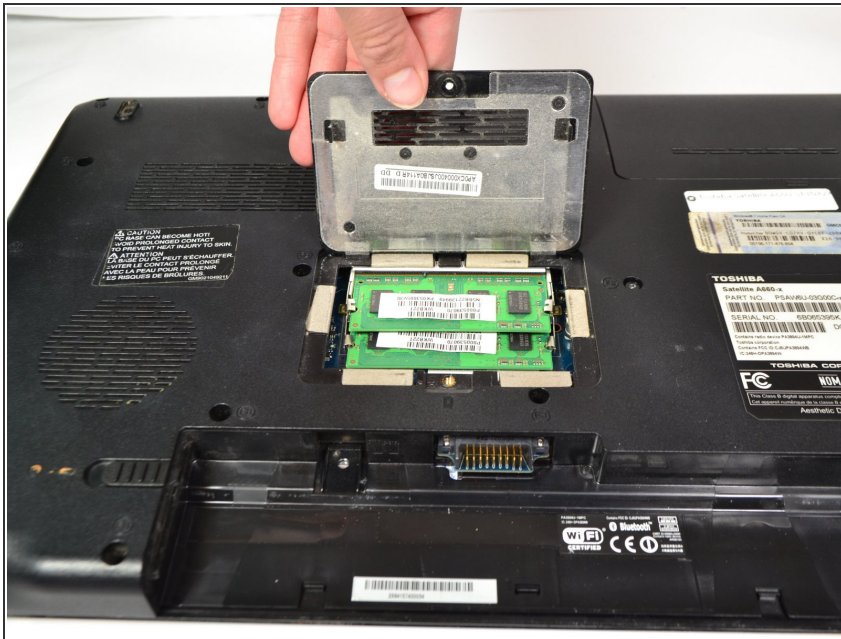
- Pull the battery out, keeping the tabs pushed to the side.
- ❗ The right tab on this laptop stayed pushed to the right without needing to be held in place.

Step 4 — RAM Memory



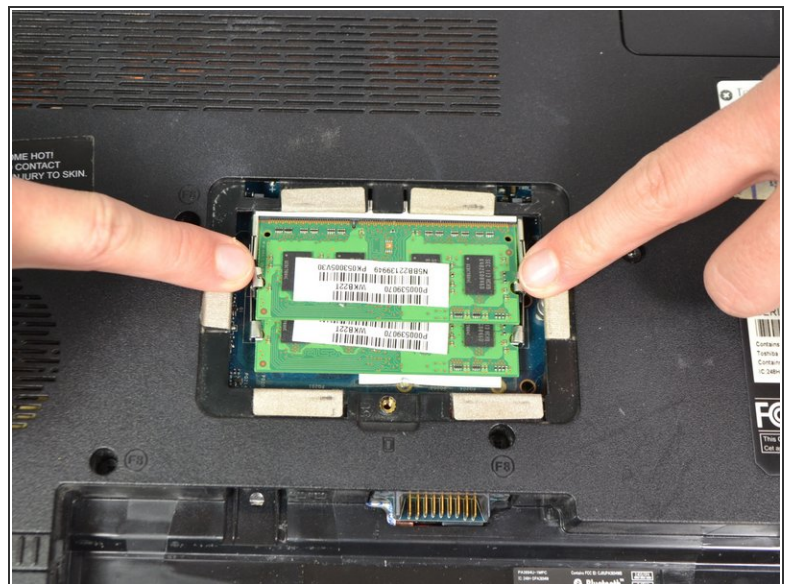
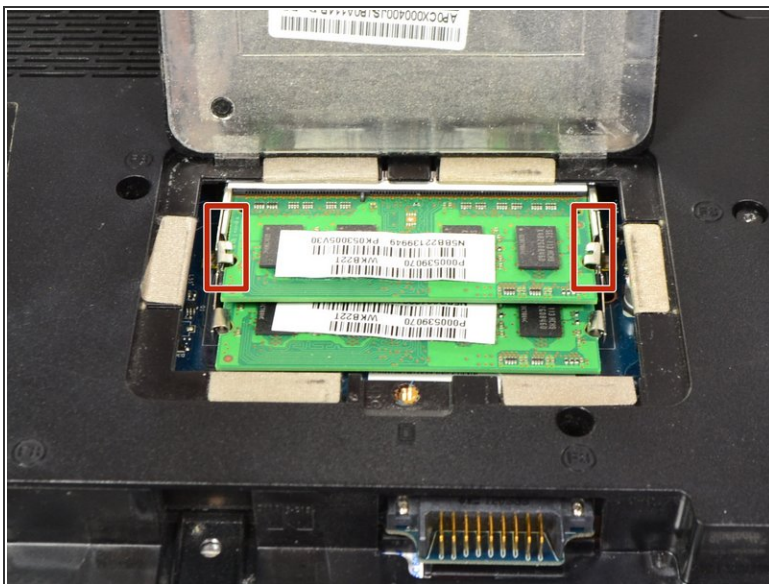
- Use a J00 bit to unscrew the single 4mm screw that leads to the RAM Memory compartment.

Step 5



- Open the hatch that holds the RAM cards.

Step 6



- Pull apart the two metal tabs that are holding the RAM cards in place.
- You will feel the card pop up from its held position, indicating it can safely be pulled out.

Step 7



- Pull out the top RAM card.

Step 8



- Use tabs on the sides of the bottom RAM card to release the RAM card.
- Remove the bottom RAM card, just as the top RAM card was removed.

To reassemble your device, follow these instructions in reverse order.