



Toshiba Satellite A75-S226 CD Drive Replacement

Written By: Garrett Gudgel



INTRODUCTION

This a very simple guide to replace or remove the CD-ROM drive from your Toshiba Satellite A75-S226. Remember when repairing the internal components of an electronic device, a dry and clean environment is ideal.



TOOLS:

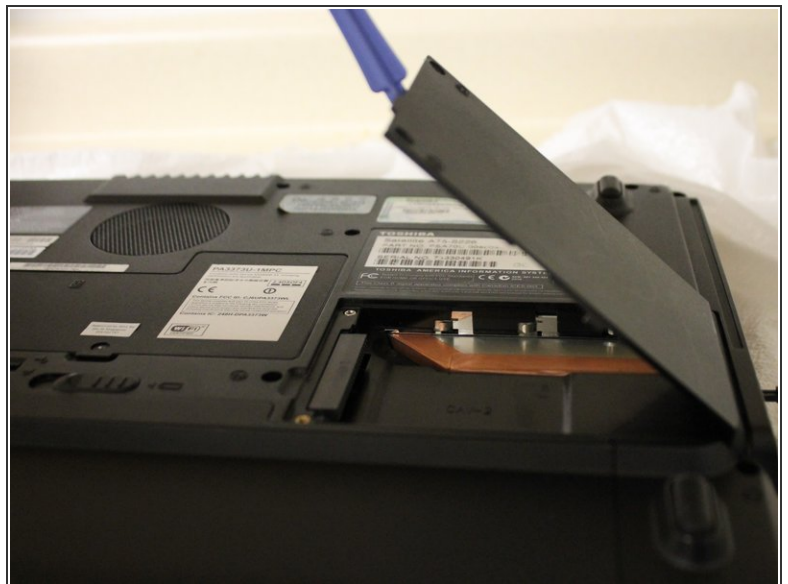
- [Phillips #1 Screwdriver](#) (1)
-

Step 1 — Optical Drive



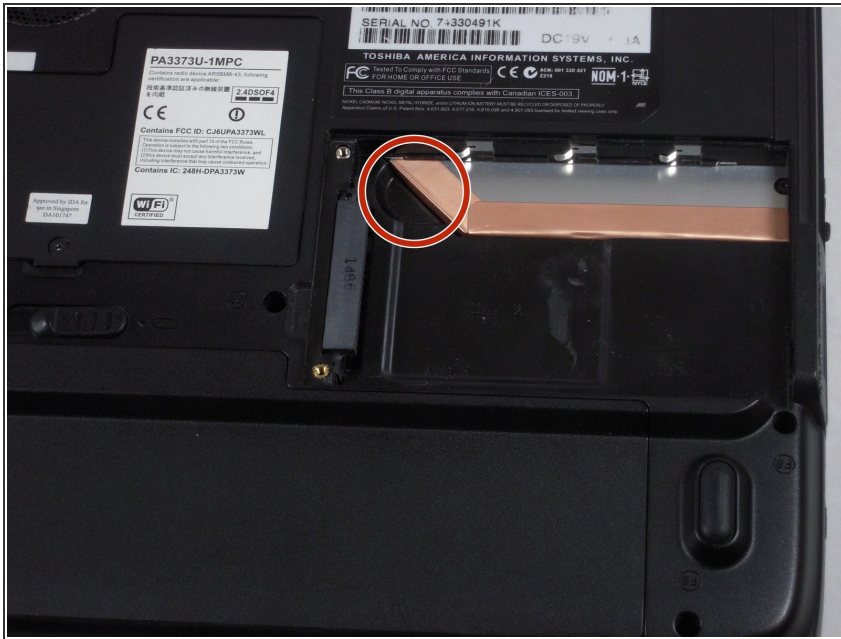
- Remove the two 5.62 mm screws from the optical drive cover.

Step 2



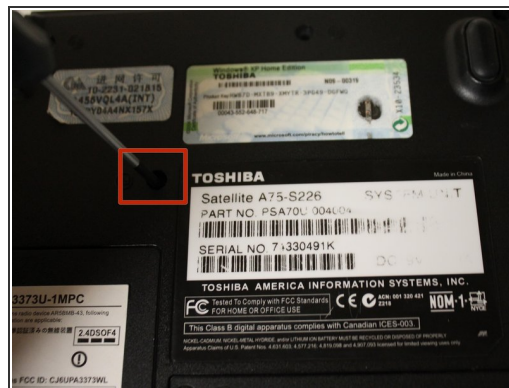
- Remove the optical drive cover.
- A plastic opening tool or a fingernail may be helpful in lifting it from its groove.

Step 3



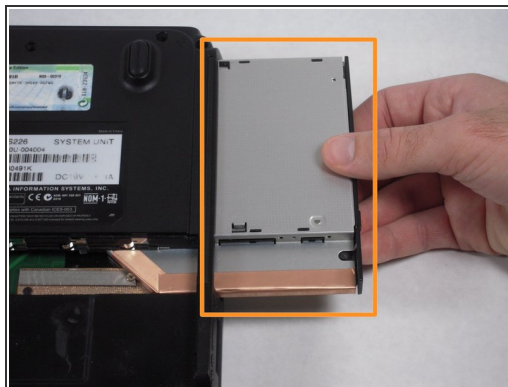
- Using the inset divot, push the optical drive out of the laptop to remove.

Step 4 — CD Drive



- Remove the 8.6 mm screw.

Step 5



- Push the bottom left corner of the CD Drive until the drive protrudes from the case.
- When a good amount of the CD Drive is showing on the right side, gently pull it out completely.

To reassemble your device, follow these instructions in reverse order.