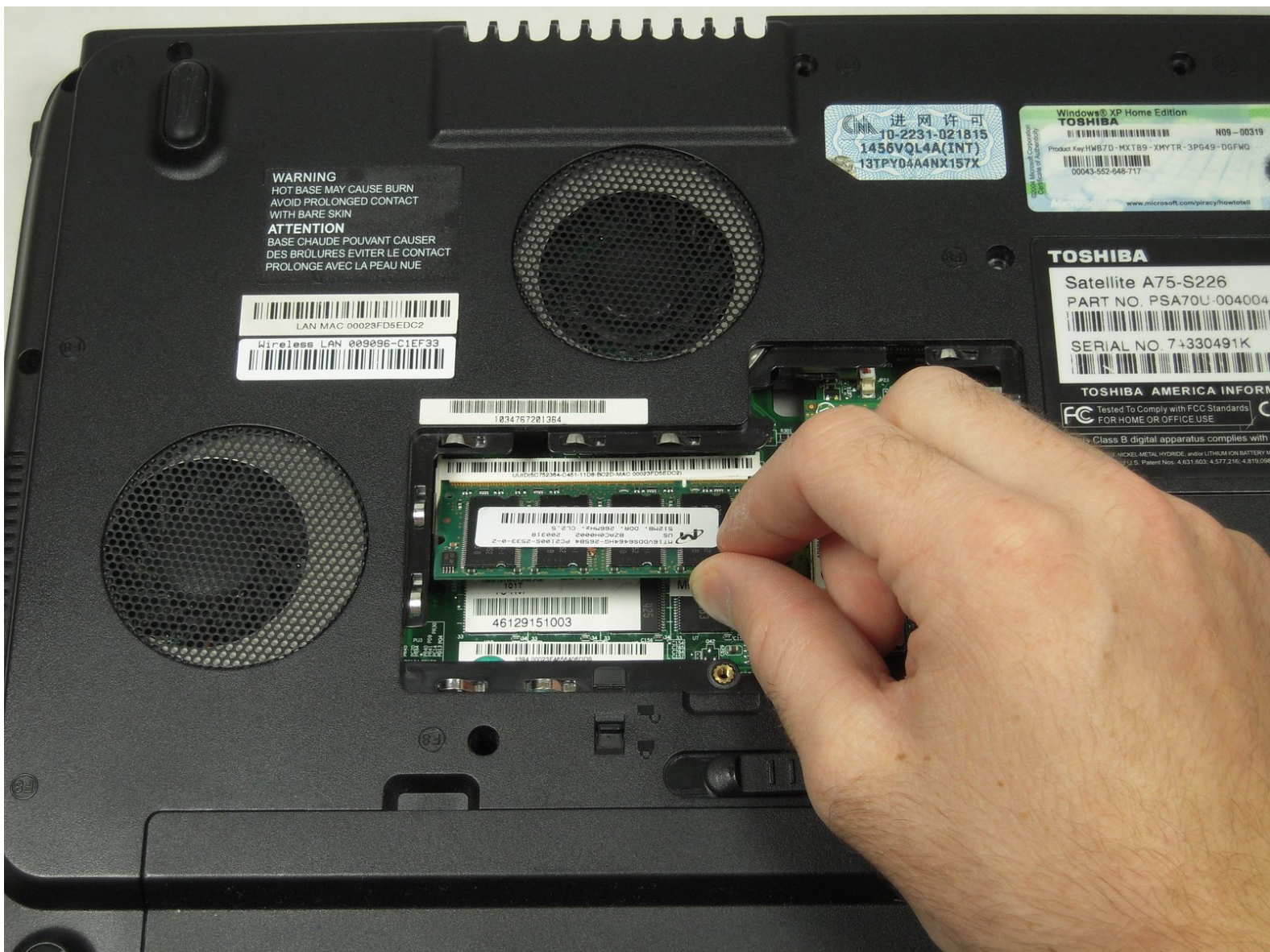




Toshiba Satellite A75-S226 Memory Replacement

Written By: Garrett Gudgel

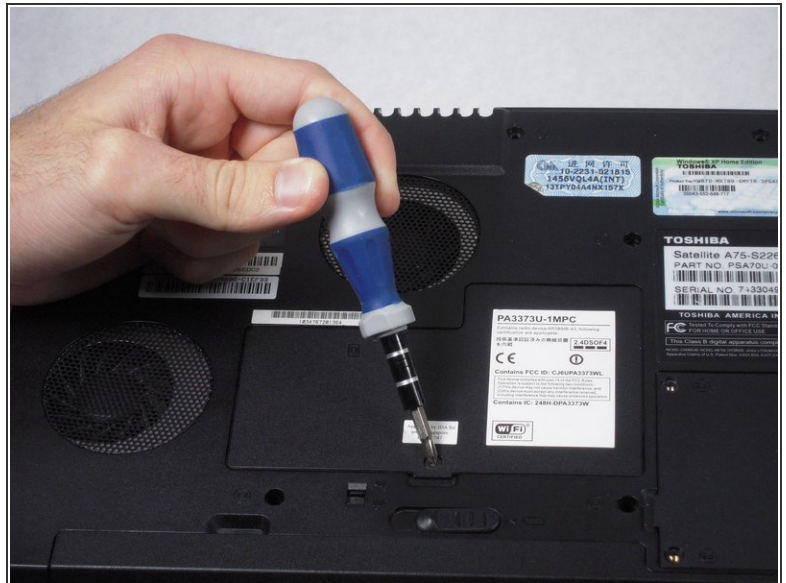




TOOLS:

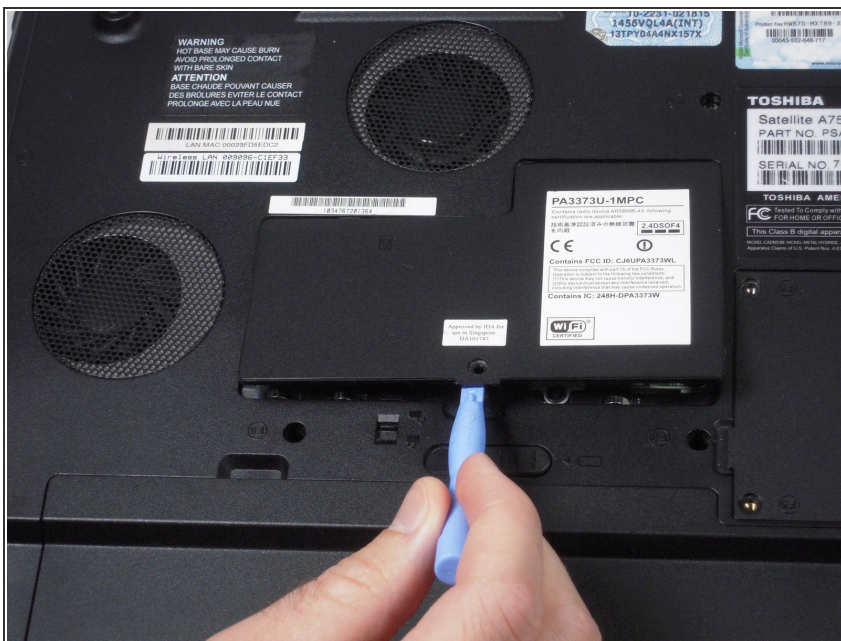
- [Phillips #1 Screwdriver](#) (1)
 - [iFixit Opening Tools](#) (1)
-

Step 1 — Wi-Fi/Memory Cover



- Remove the 5.75 mm screw from the cover panel.
- ❗ Turn the laptop over with the screen facing down.

Step 2



- Lift up the cover panel using a plastic opening tool.

Step 3 — Memory



- Match the notch on the left of the gold edge of the memory with the notch of the laptop.
- Insert the memory into the slot.

Step 4



- Push down on the memory gently until it clicks into place.

To reassemble your device, follow these instructions in reverse order.