



Toshiba Satellite A75-S226 Optical Drive Replacement

This a very simple guide to replacing or remove the CD-ROM drive from your Toshiba Satellite A75-S226.

Written By: Garrett Gudgel



This document was generated on 2019-09-26 01:29:52 AM (MST).

INTRODUCTION

This a very simple guide to replacing or remove the CD-ROM drive from your Toshiba Satellite A75-S226.



TOOLS:

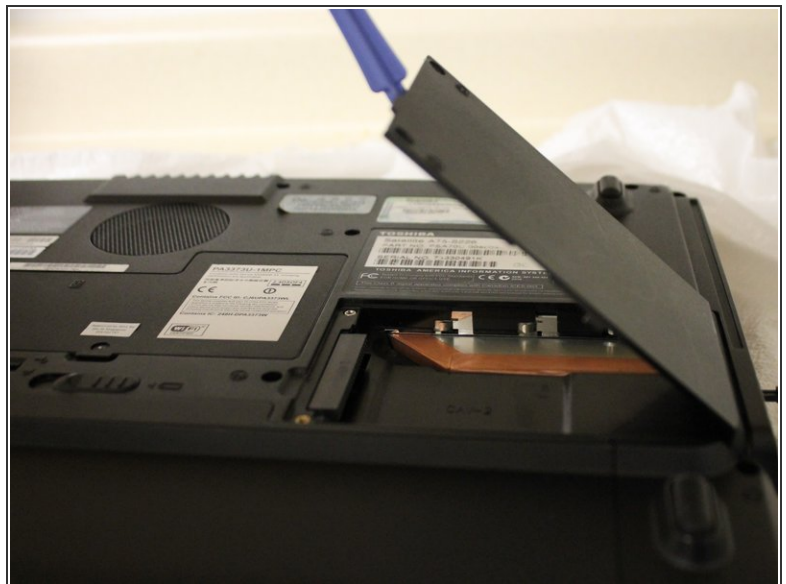
- [Phillips #1 Screwdriver](#) (1)
-

Step 1 — Optical Drive



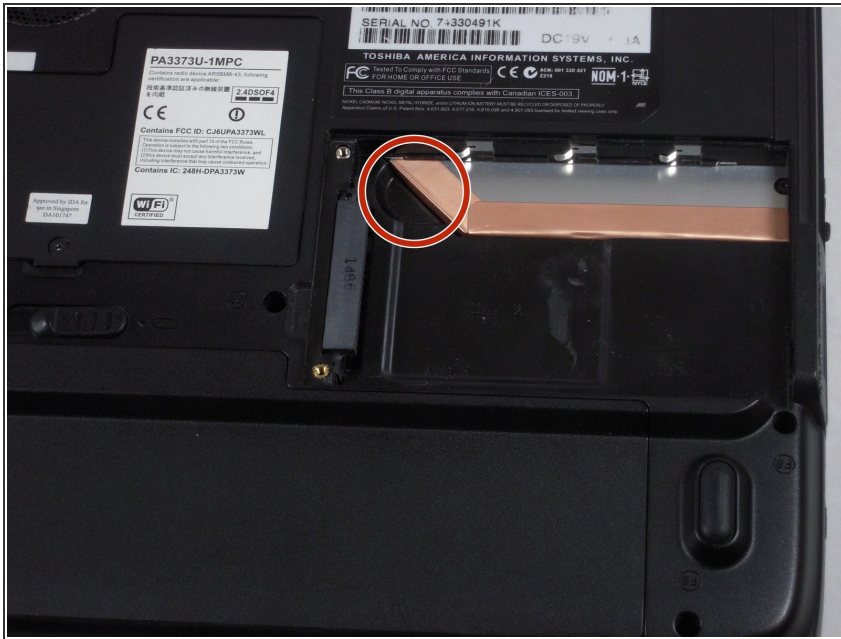
- Remove the two 5.62 mm screws from the optical drive cover.

Step 2



- Remove the optical drive cover.
- A plastic opening tool or a fingernail may be helpful in lifting it from its groove.

Step 3



- Using the inset divot, push the optical drive out of the laptop to remove.

To reassemble your device, follow these instructions in reverse order.