



# Toshiba Satellite A75-S226 Wi-Fi Card Replacement

Written By: Garrett Gudgel

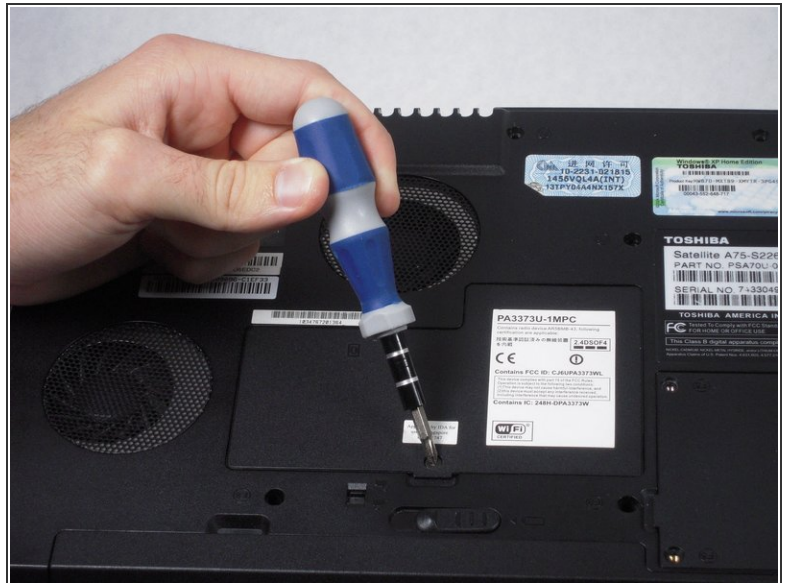




## TOOLS:

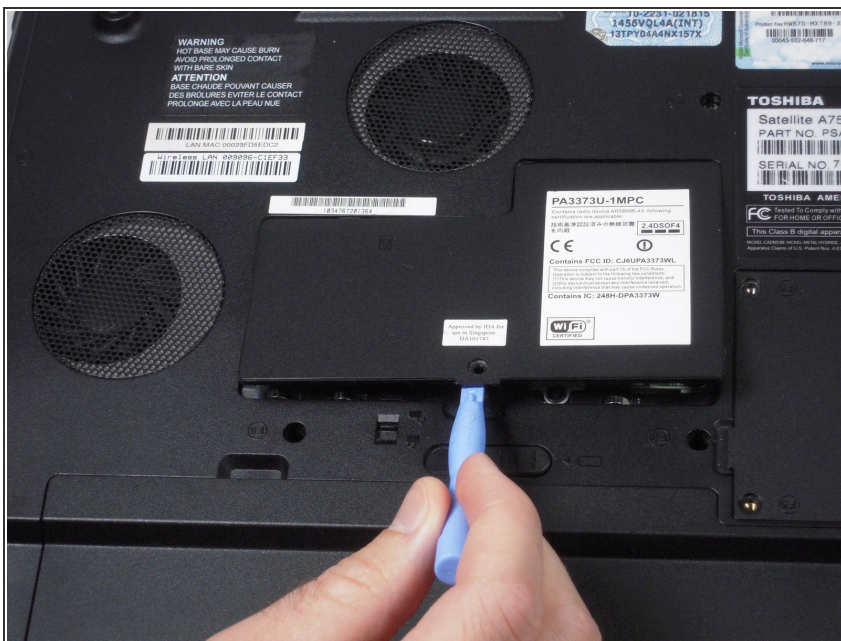
- [Phillips #1 Screwdriver](#) (1)
- [iFixit Opening Tools](#) (1)

## Step 1 — Wi-Fi/Memory Cover



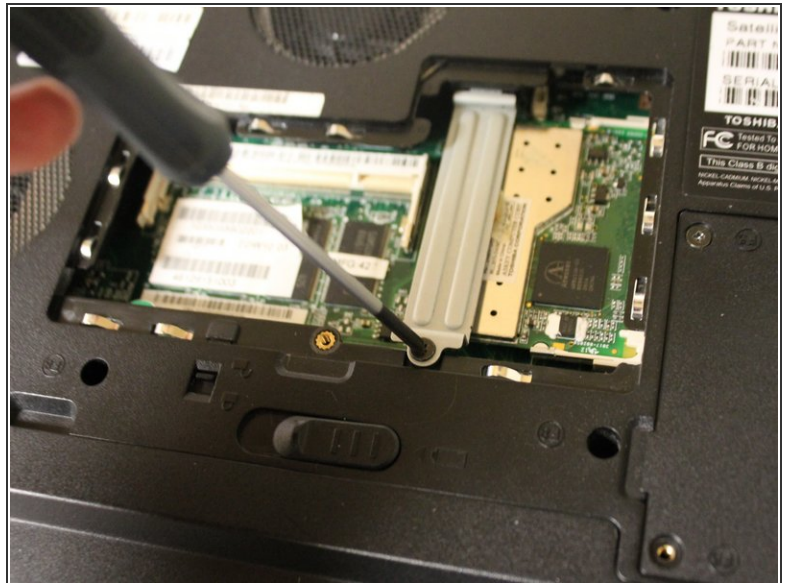
- Remove the 5.75 mm screw from the cover panel.
- ⓘ Turn the laptop over with the screen facing down.

## Step 2



- Lift up the cover panel using a plastic opening tool.

## Step 3 — Wi-Fi Card



- Remove the 5.64 mm screw from the bottom of the crossing bar.
- Remove the crossing bar.

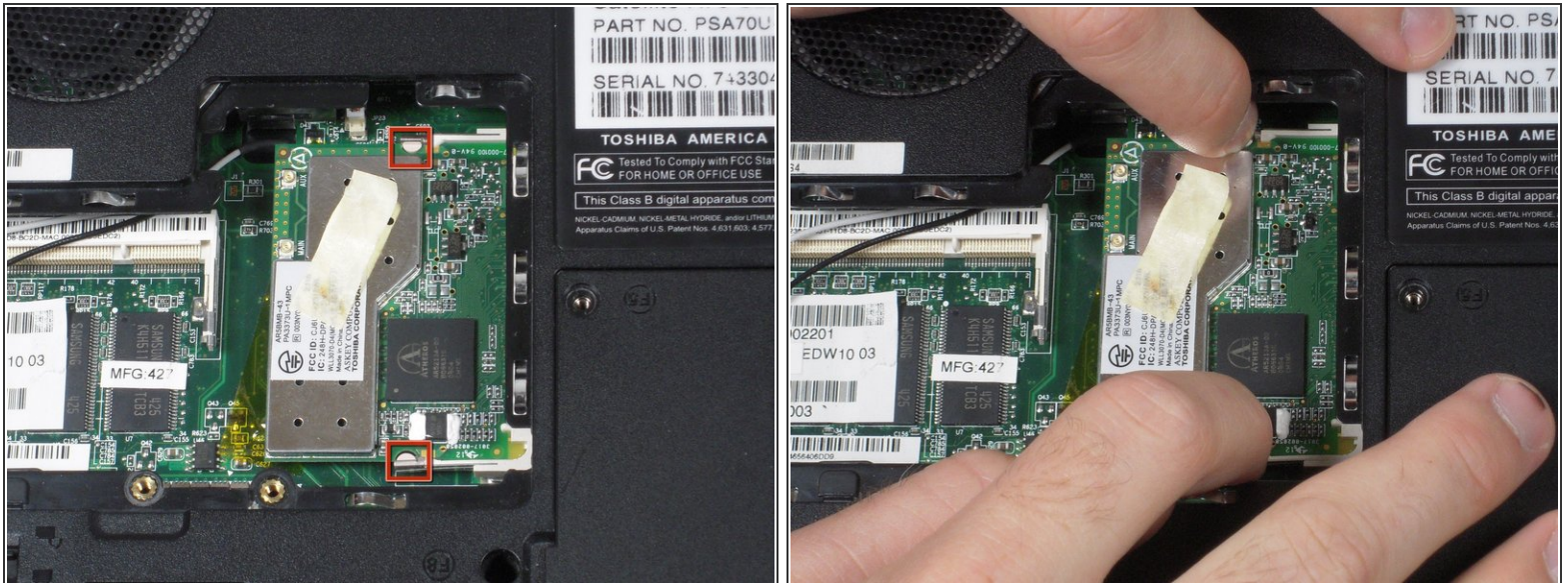
## Step 4



- Use a plastic opening tool to disconnect the black and white antenna cable's connectors from the Wi-Fi card.
- ⓘ Note that the black wire is connected to the port that is labeled main.

This document was generated on 2019-09-17 10:28:23 PM (MST).

## Step 5



- Use fingers to push the clips away from memory card.

## Step 6



- Use fingers to remove the Wi-Fi card.

To reassemble your device, follow these instructions in reverse order.