



# Toshiba Satellite A85-S107 15" Back Panel Replacement

This guide will teach you to open up a back panel on the Toshiba Satellite A85-S107 15" to repair the RAM and Wireless Card.

Written By: Shravani Kakarla



---

## INTRODUCTION

If you need to access your RAM and Wireless Card, this guide will help you to open up the back panel.



### TOOLS:

- [Phillips #0 Screwdriver](#) (1)
-

## Step 1 — Back Panel



- Power off the laptop.

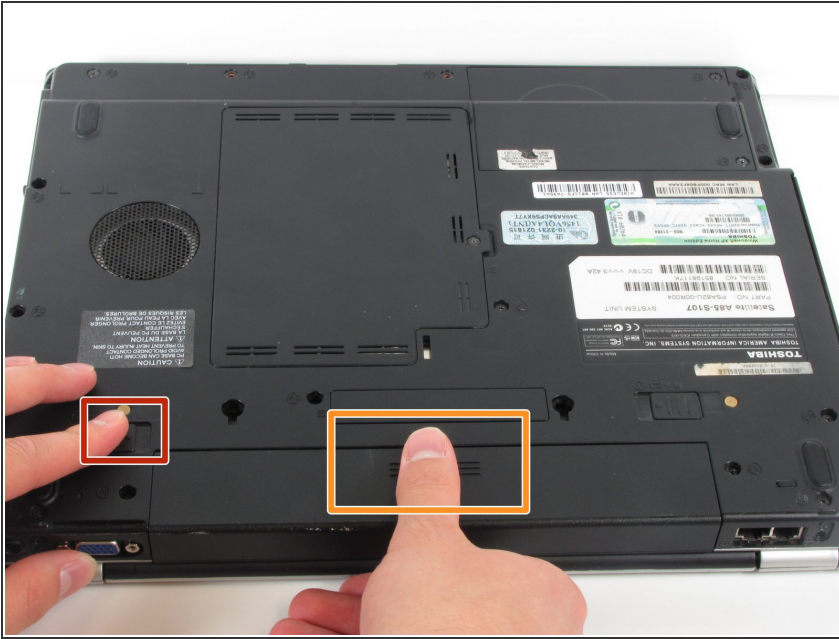
⚠ Disconnect the power cable from the laptop. If you do not, electric shock may result.

## Step 2



- Flip the laptop over and orient it such that the battery faces towards you and the front faces away from you as shown in the diagram.
- Unlock the battery by sliding the tab shown to the right.
- This tab will latch into place.

## Step 3



- Slide the tab shown to the left and remain holding it.
- ⓘ This tab does not lock into place like in the first step.
- Place your thumb on the grips of the battery as shown.
- While holding onto the grips, pull the battery towards you and away from the laptop.

## Step 4



- Loosen this 5 mm Phillips #0 screw found in the center of the lower case.
- ⓘ The screw will not come out completely, it will stay connected to the center plate.



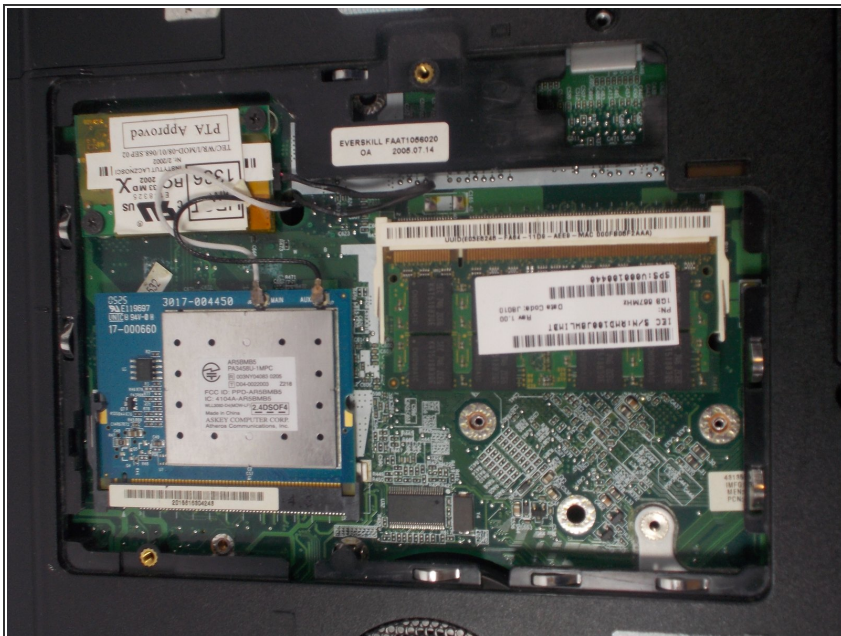
## Step 5



- Remove the center plate by lifting it and sliding it to the right.

⚠ If the back panel is difficult to remove and feels like it is going to break, DO NOT force it. Check to confirm that the screw is loose before attempting again.

## Step 6



- The computer should be open with many of the internal components shown. You can now access the RAM, and wireless card.

To reassemble your device, follow these instructions in reverse order.