



Toshiba Satellite A85-S107 15" RAM Replacement

This guide will demonstrate how to install RAM.

Written By: Travis



INTRODUCTION

Use this guide to replace or install RAM in your Toshiba laptop.



TOOLS:

- [Phillips #0 Screwdriver](#) (1)



PARTS:

- [PC2100 512 MB RAM Chip](#) (1)

Step 1 — Back Panel



- Power off the laptop.

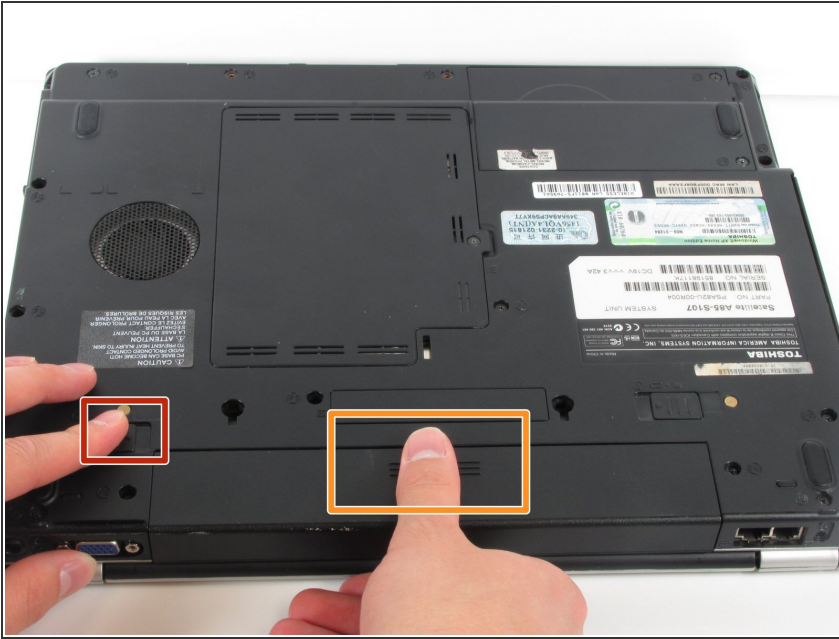
⚠ Disconnect the power cable from the laptop. If you do not, electric shock may result.

Step 2



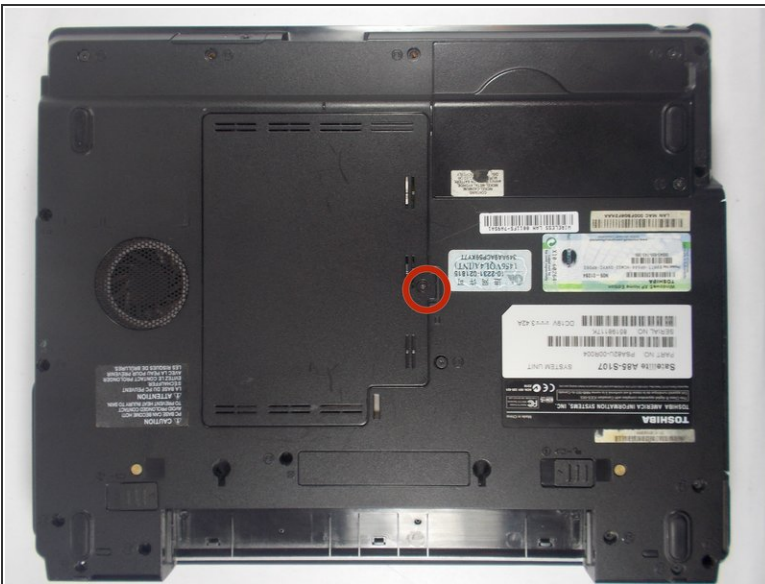
- Flip the laptop over and orient it such that the battery faces towards you and the front faces away from you as shown in the diagram.
- Unlock the battery by sliding the tab shown to the right.
- This tab will latch into place.

Step 3



- Slide the tab shown to the left and remain holding it.
- ⓘ This tab does not lock into place like in the first step.
- Place your thumb on the grips of the battery as shown.
- While holding onto the grips, pull the battery towards you and away from the laptop.

Step 4



- Loosen this 5 mm Phillips #0 screw found in the center of the lower case.
- ⓘ The screw will not come out completely, it will stay connected to the center plate.

Step 5



- Remove the center plate by lifting it and sliding it to the right.

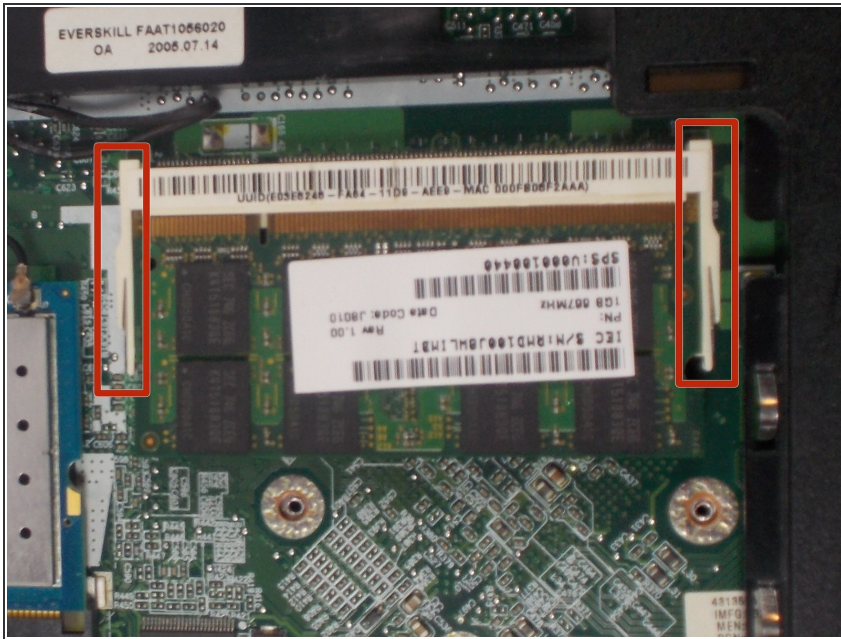
⚠ If the back panel is difficult to remove and feels like it is going to break, DO NOT force it. Check to confirm that the screw is loose before attempting again.

Step 6



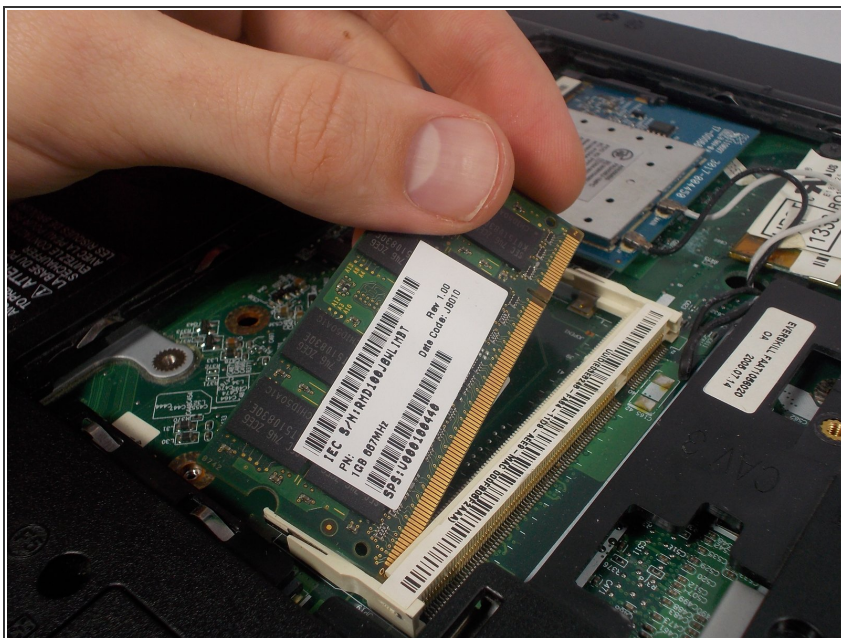
- The computer should be open with many of the internal components shown. You can now access the RAM, and wireless card.

Step 7 — RAM



- Push the two white tabs away from the RAM. The left side of the RAM should pop out of its holder.

Step 8



- Pull the RAM out of the dock by lifting it from the left side and sliding it towards the left.

To reassemble your device, follow these instructions in reverse order.