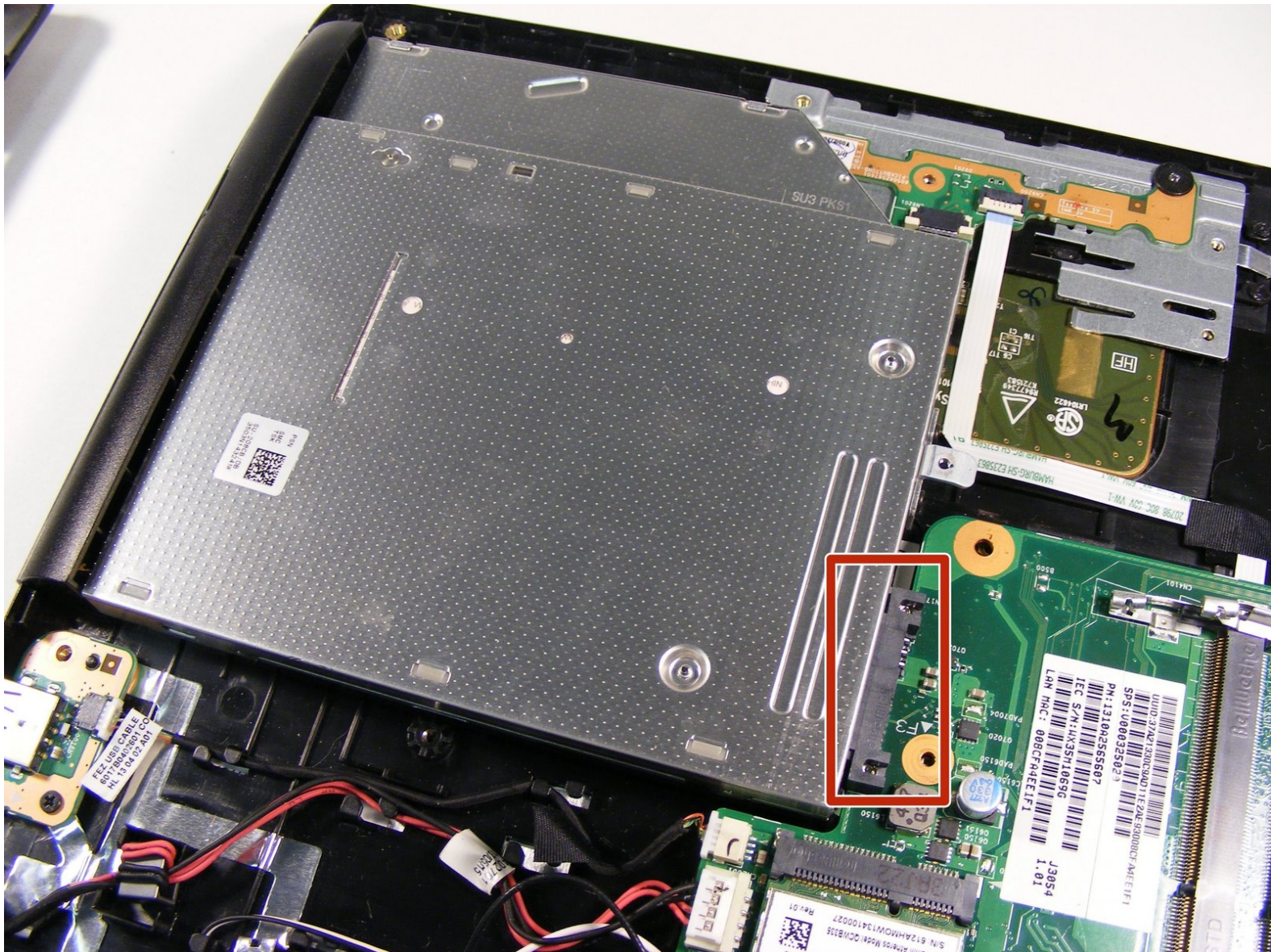




Toshiba Satellite C50D-A Optical Drive Replacement

In this guide, we will show you how to replace the optical drive in your Toshiba Laptop.

Written By: Amber van Solingen



INTRODUCTION

This guide details how to replace the optical drive in your laptop. You will need a pry tool and Phillips screwdriver to complete the prerequisite steps (removing the back of the device) to access the optical drive, remove it, and replace it with a new one.




TOOLS:

- [iFixit Opening Tools](#) (1)
 - [Phillips #1 Screwdriver](#) (1)
-

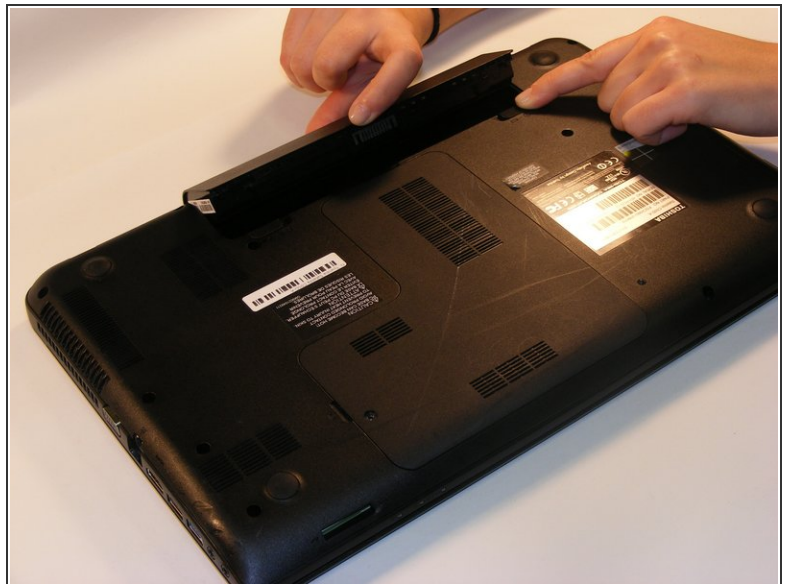
Step 1 — Battery



- Click button 1 to the unlocked position.

 This button will have a 1 by it.

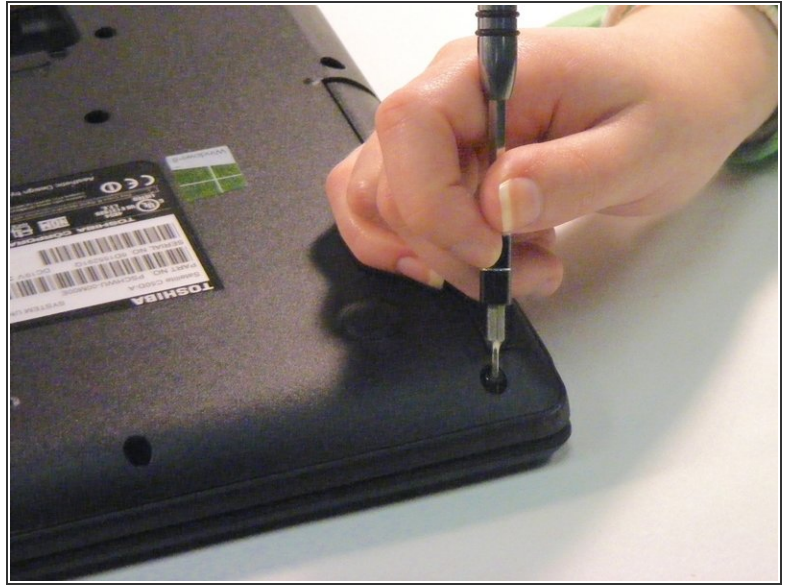
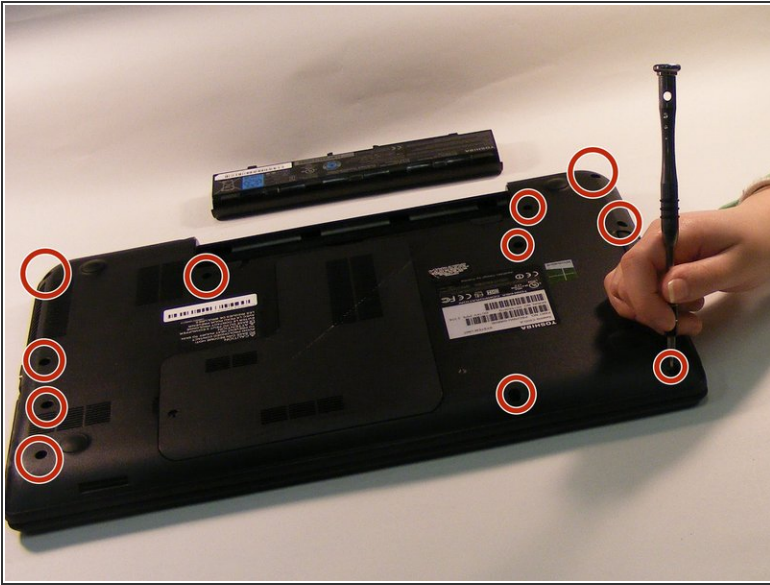
Step 2



- Push and hold button 2 to the left.
- As you push button 2 to the left position, simultaneously lift up the battery pack.

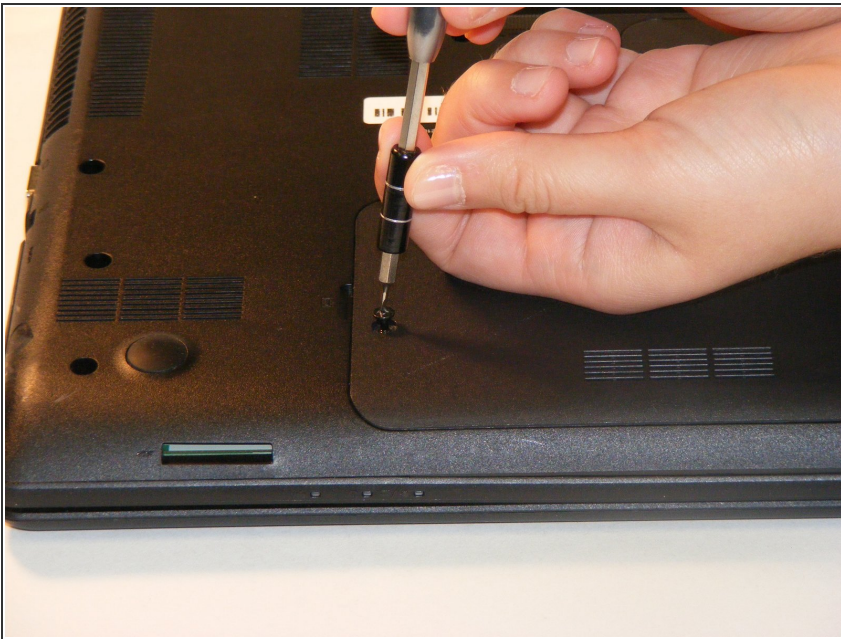
 This button will have a 2 by it.

Step 3 — Lower Case



- Using the Phillips #1 screwdriver, remove the eleven 2.5mm screws.

Step 4



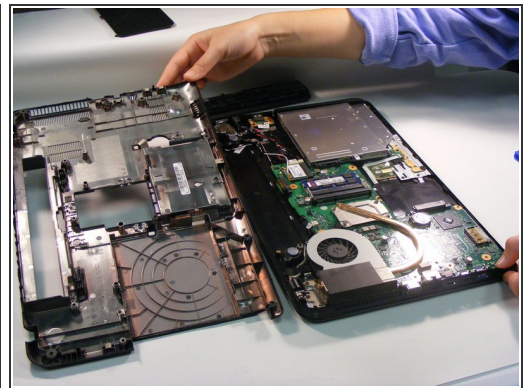
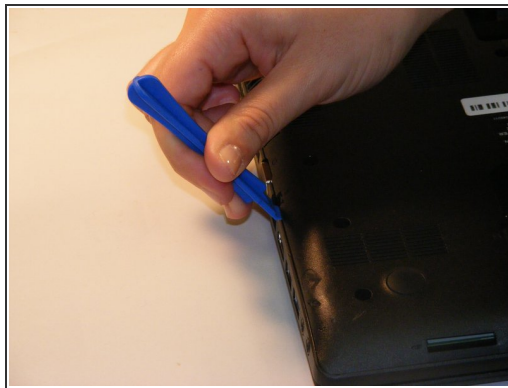
- Remove the one 2.5mm Phillips #1 middle plate screw.

Step 5



- Lift up the middle vent panel.
- Set the panel to the side.

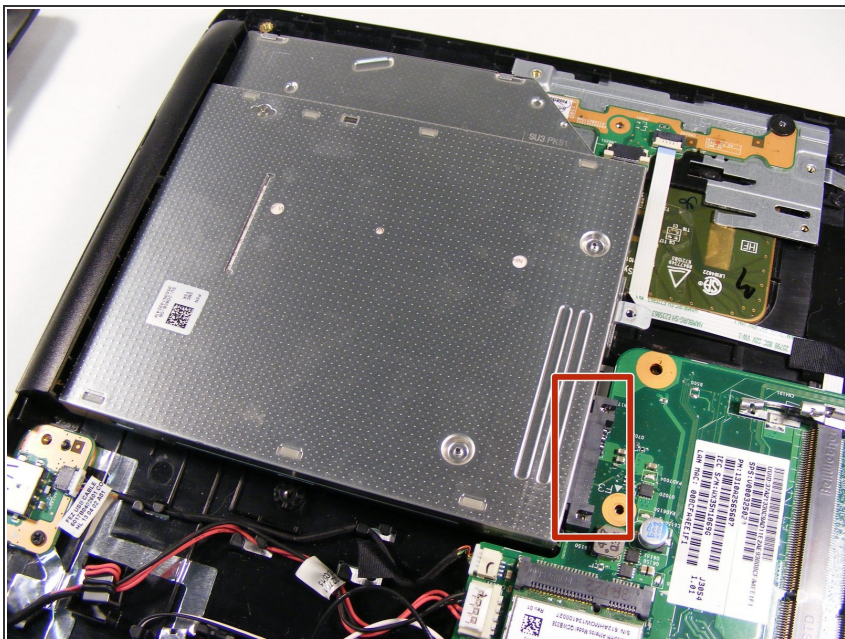
Step 6



- Using the plastic opening tool, remove the outer panel and set to the side.

⚠ Be careful not to break the back of the computer.

Step 7 — Optical Drive



- Locate the optical drive and find where it is slotted into the motherboard.
- ⚠ Be careful not to break the attachment site.

Step 8



- Gently lift up the optical drive at a slight angle, and pull it towards you to remove it.

To reassemble your device, follow these instructions in reverse order.