



# Toshiba Satellite C55-A5140 RAM Replacement

Upgrade or replace system RAM to improve performance.

Written By: Cameron Chapman



---

## INTRODUCTION

If your computer is running unusually slow or will not load the home screen, the computer's RAM may need to be replaced. RAM stands for Random Access Memory which allows the computer to run faster by storing temporary files for quick access. Over time, the RAM can become corrupted which will require replacement. In general, a computer's overall speed can be increased by installing a larger amount of RAM.

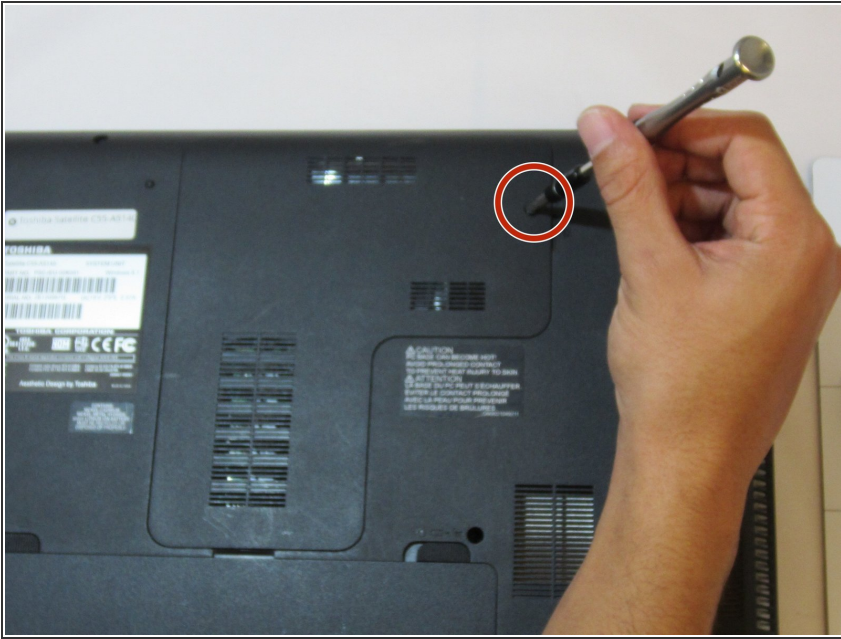


### TOOLS:

- [iFixit Opening Tools](#) (1)
  - [Philips Head Screwdriver: Size J1](#) (1)
-



## Step 1 — RAM



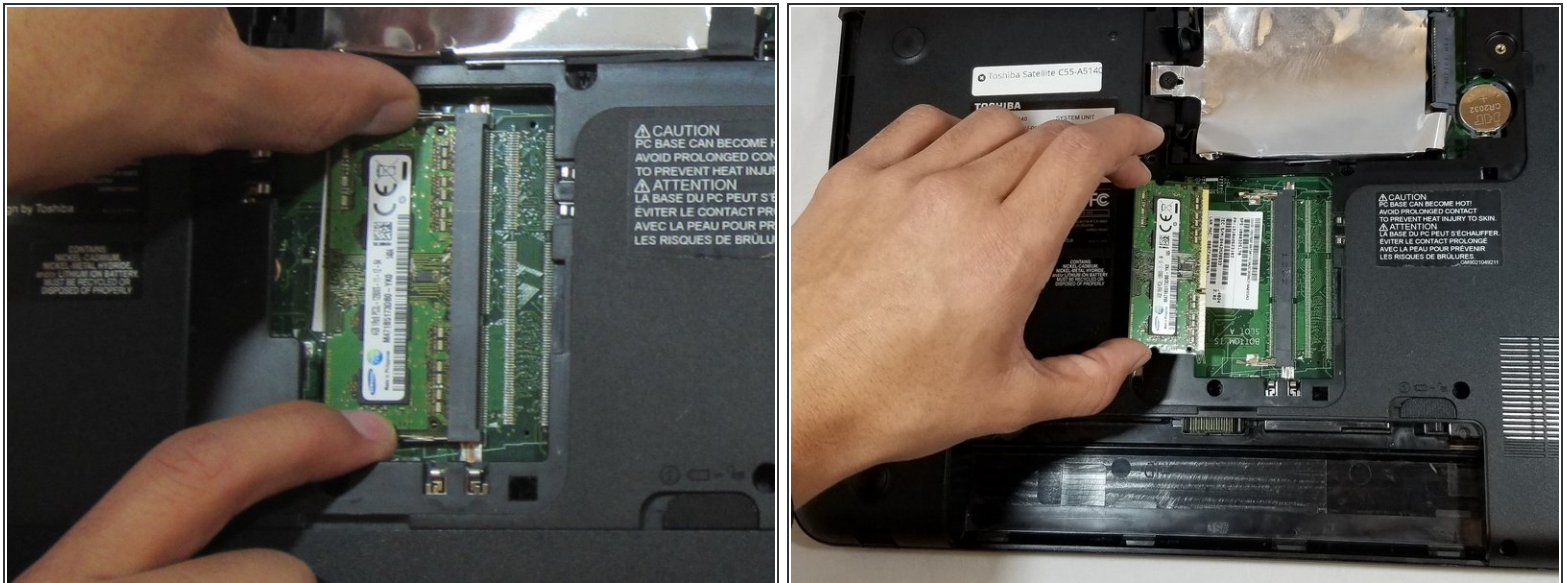
- Make sure that the device is unplugged, completely off, and that the device is not warm to the touch.
- Flip the device over, and unscrew the 5mm PH#1 screw on L shaped access panel.
- ❗ Screw will not come out of access panel: simply unscrew until loose.

## Step 2



- Use the plastic opening tool to open access panel by sliding it into notch near screw and prying access panel(L-shaped) away from device.
- Pull panel completely free from device and set aside.

## Step 3



- Push the two metal tabs on each side of RAM stick outward (away from RAM) to unlock from tray.
- Pull ram straight out (away from connector) to remove.

To reassemble your device, follow these instructions in reverse order. After sliding new RAM into tray, push straight downward to lock it into position.