



Toshiba Satellite C55-A5286 Hard Drive Replacement

How to replace a Toshiba Satellite C55-A5286 hard drive.

Written By: Nicole Zellers



INTRODUCTION

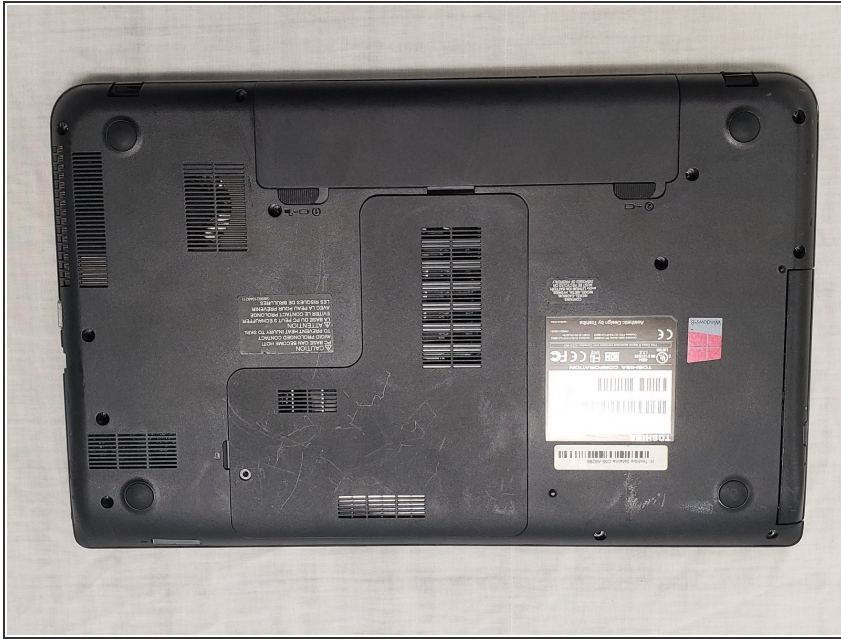
This guide will show you how to remove or replace the hard drive of the Toshiba Satellite C55-A5286 laptop. A Phillips screwdriver of head size PH0 is required for this guide.




TOOLS:

- [Phillips #0 Screwdriver](#) (1)
-


Step 1 — Hard Drive



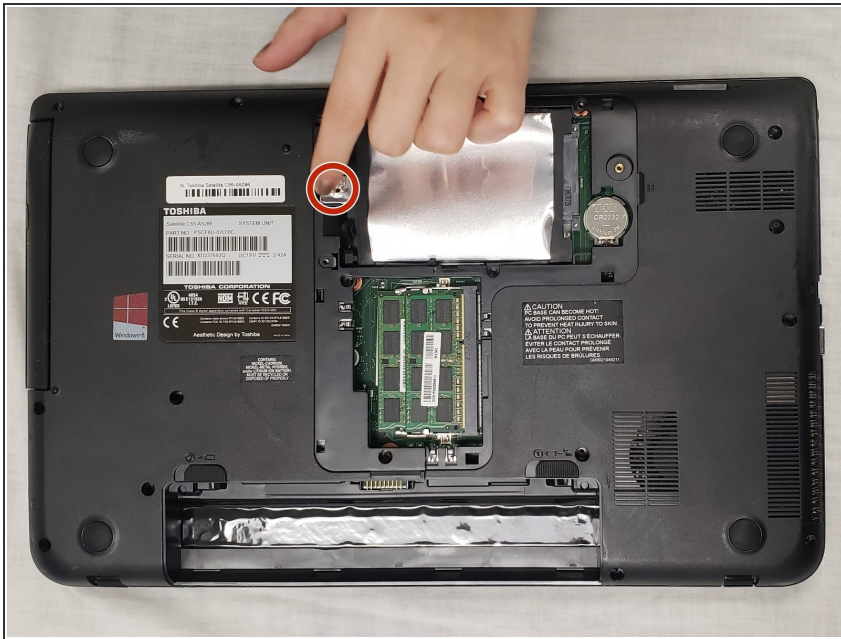
 Unplug the AC adapter and all other auxiliary components from the laptop.

Step 2



-  There is a removable panel on the underside of the laptop with one 5-mm screw holding it in place.
- Use the screwdriver to remove the screw and then remove the back panel.

Step 3



- i** Underneath this panel is a silver square with rubber around the edges. This is the hard drive. On the side of the hard drive nearest to the manufacturer's label, there is a large, flat 8-mm screw that is holding the hard drive in place.
- Use the screwdriver to remove the screw.

Step 4



- Carefully hold the sides of the hard drive with the rubber and pull the hard drive out. It should remove fairly easily.

To reassemble your device, follow these instructions in reverse order.