



# Toshiba Satellite C55-A5310 Optical Drive Replacement

How to replace a Toshiba Satellite C55-A5310 optical drive.

Written By: Kari Rodgers





## TOOLS:

- [iFixit Opening Tools](#) (1)
  - [JIS #000 Screwdriver](#) (1)
-

## Step 1 — Battery



- Push the left tab with your left hand.
- Then push the right tab with your right hand.
- While your right hand is still pushing, remove the battery with your left hand.

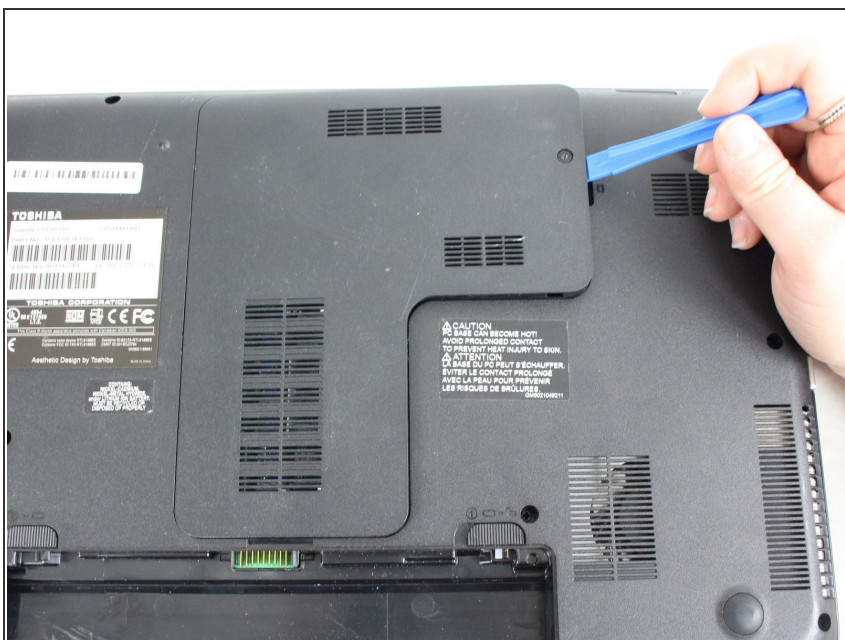
## Step 2 — Optical Drive



- Remove one screw with a JIS #000 screwdriver.
- ⓘ This screw does not come completely out, but you will still be able to get the panel off.

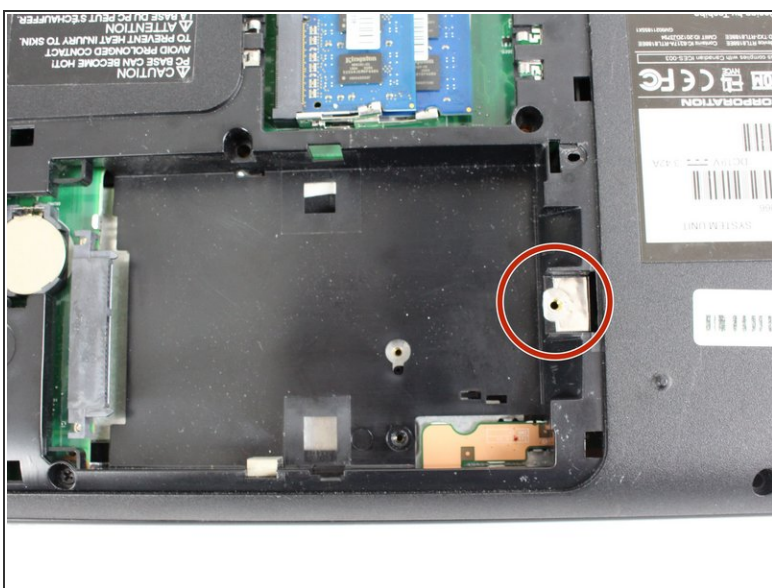


## Step 3



- Use the plastic opening tool to pry open the back panel. Make sure to loosen all four sides then lift up.

## Step 4



- Remove a .5mm screw with a JIS #000 screwdriver.

## Step 5



- Using a plastic opening tool, pry open the disk drive. Once it has loosened it will pull out.

To reassemble your device, follow these instructions in reverse order.