



Toshiba Satellite C55-B5200 Hard Disk Drive Replacement

A hard drive replacement guide for a Toshiba Satellite C55-B5200 laptop.

Written By: Pablo Andrade



INTRODUCTION

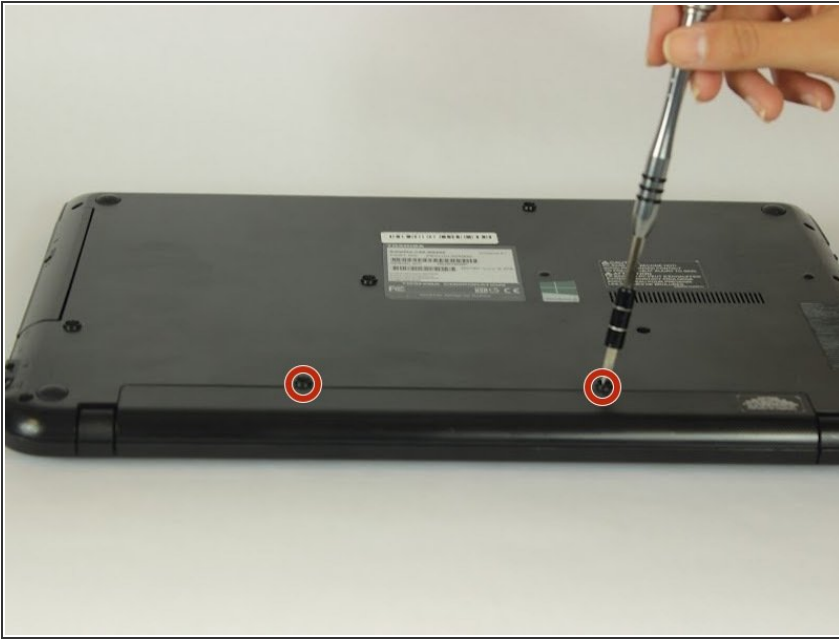
A hard drive replacement guide for a Toshiba Satellite C55-B5200 laptop.



TOOLS:

- [iFixit Opening Tools](#) (1)
 - [Phillips #0 Screwdriver](#) (1)
-

Step 1 — Battery



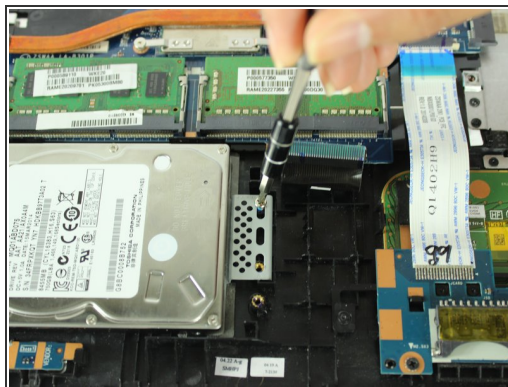
- Turn the laptop off and remove all sources of power.
- Flip the laptop over so that way the bottom is facing towards you.
- Remove the two 6.6mm Phillips #0 screws from the battery.

Step 2



- Pull the battery out of the laptop.

Step 3 — Hard Disk Drive



- Remove the two 4.6mm Phillips #0 screws from disk drive.
- Lift the disk drive and pull out to remove.

To reassemble your device, follow these instructions in reverse order.