



# Toshiba Satellite C55-B5200 Keyboard Replacement

Written By: Pablo Andrade



---

# INTRODUCTION

Standard Keyboard with 10-key and touchpad with multi-touch control

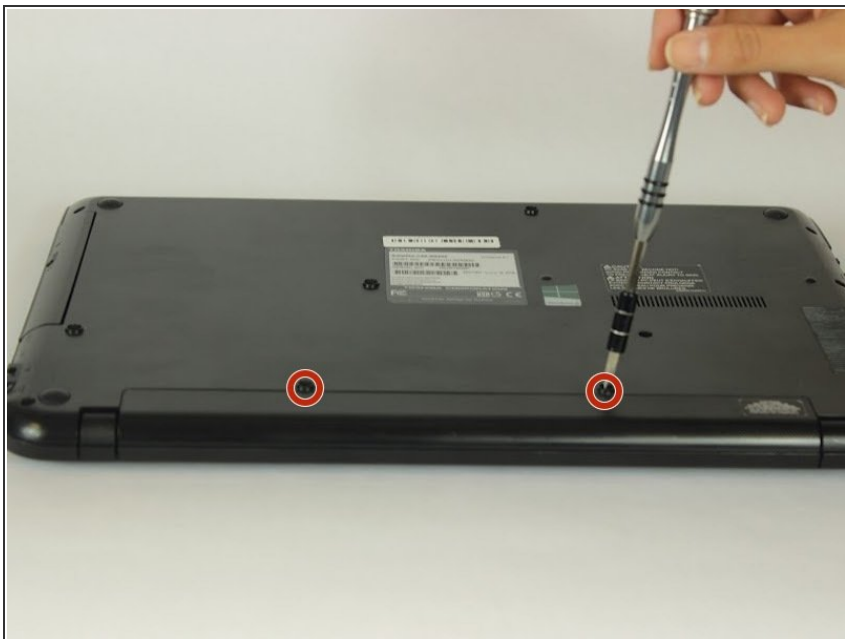
---



## TOOLS:

- [Tweezers](#) (1)
  - [iFixit Opening Tools](#) (1)
  - [Phillips #0 Screwdriver](#) (1)
-

## Step 1 — Battery



- Turn the laptop off and remove all sources of power.
- Flip the laptop over so that way the bottom is facing towards you.
- Remove the two 6.6mm Phillips #0 screws from the battery.

## Step 2



- Pull the battery out of the laptop.

## Step 3 — Keyboard



- Remove the thirteen 6.6mm Phillips #0 screws on the back of the device.

## Step 4



- Use a plastic opening tool to lift and remove the bottom panel.



## Step 5



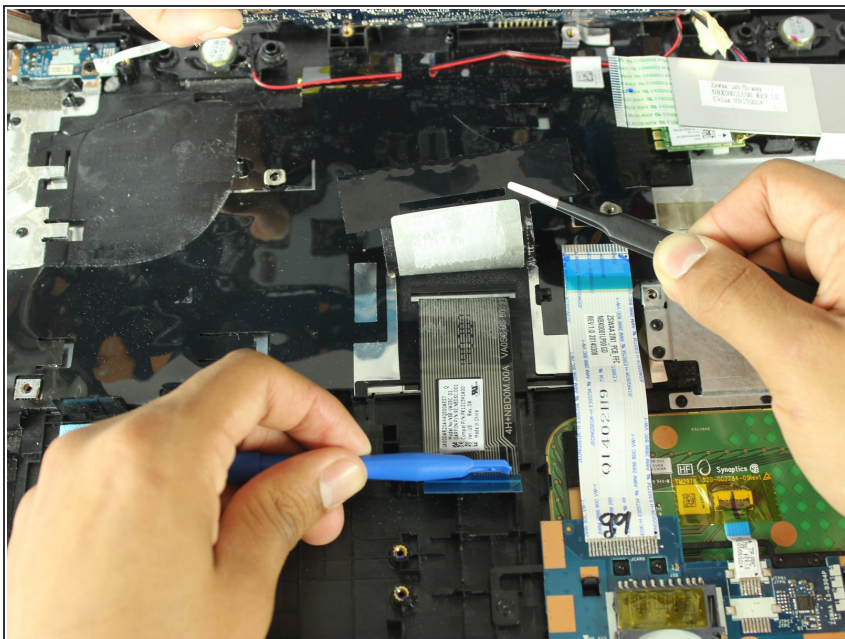
- Remove the six 2.3mm Phillips #0 screws from the motherboard.
- Use a pair of tweezers to lift up the tab on the ZIF connector and pull out the ribbon cable.

## Step 6



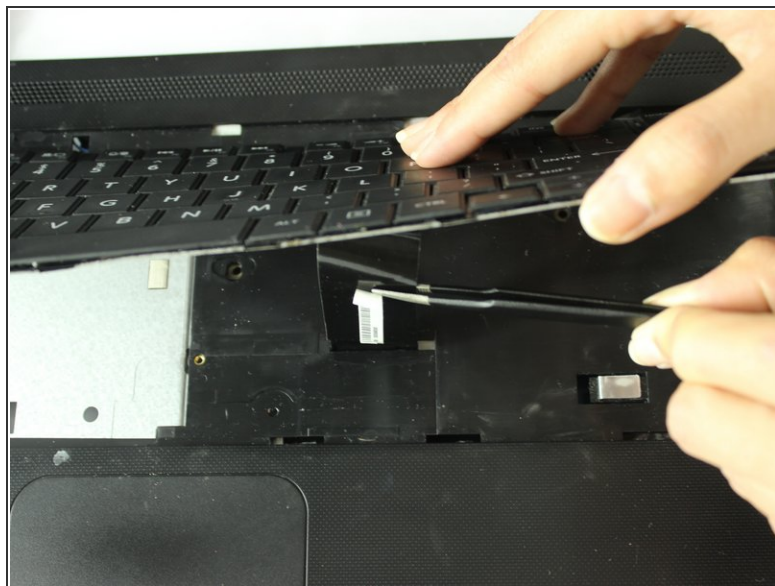
- Disconnect the wires from the motherboard.
- Lift and remove the disk drive.
- Lift and remove the hard drive.

## Step 7



- Lift up the motherboard
- Use tweezers to carefully peel apart IDE ribbon cables connected from motherboard to keyboard

## Step 8



- Use a plastic opening tool to unlatch the keyboard from the device
- Lift the keyboard off the laptop, careful of the IDE ribbon cable

To reassemble your device, follow these instructions in reverse order.