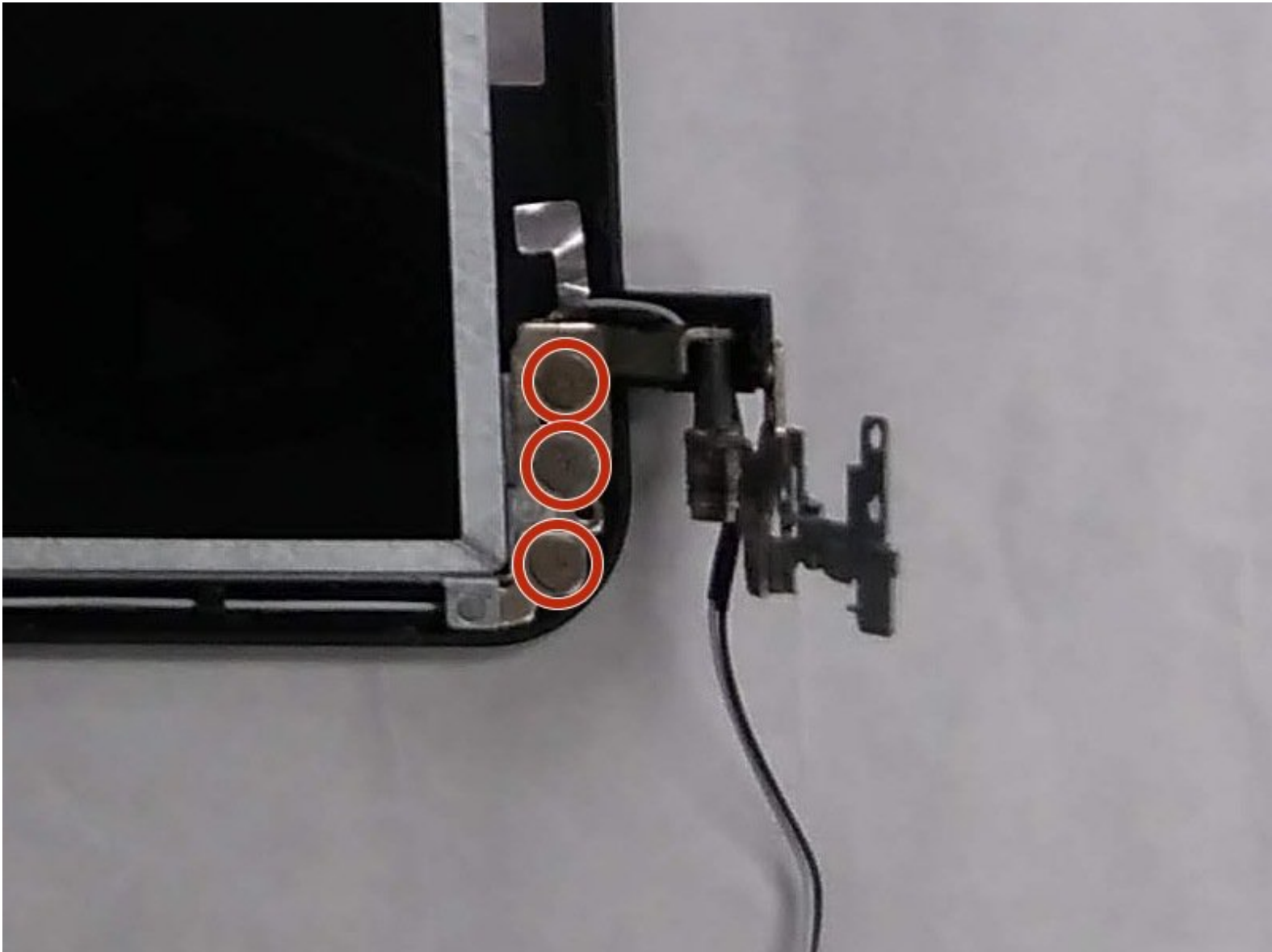




Toshiba Satellite C55-B5302 Webcam Replacement

This guide will show you how to remove the Toshiba Satellite C55-B5302 webcam.

Written By: David Browning



INTRODUCTION

These are the steps for removing the webcam from your Toshiba Satellite C55-B5302 laptop. Since the webcam is delicate in nature and has photosensitive parts, you should be careful when handling the webcam unit and make sure not to scratch the lens or expose it to bright light for too long.



TOOLS:

- [Phillips #0 Screwdriver](#) (1)
 - [Phillips #00 Screwdriver](#) (1)
 - [iFixit Opening Tools](#) (1)
 - [Metal Spudger Set](#) (1)
-

Step 1 — Battery



- Flip laptop upside down so you can see the screws.

Step 2



- Using the Phillips #0 screwdriver, remove the two 7 mm screws from the back casing.

Step 3



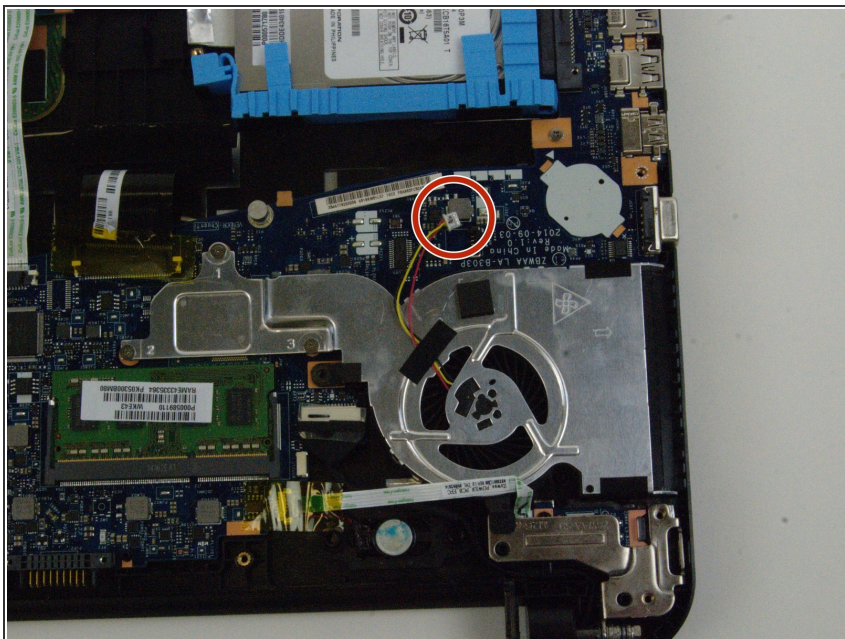
- Pull the battery from the back of the laptop for removal from the laptop.

Step 4 — Fan



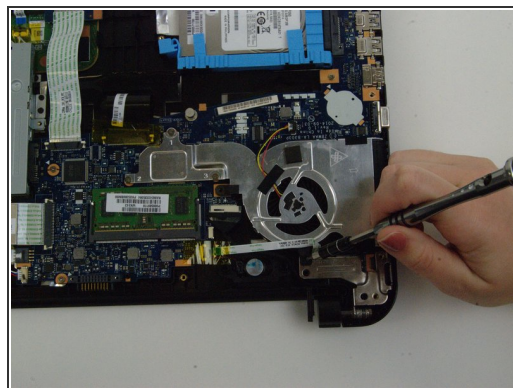
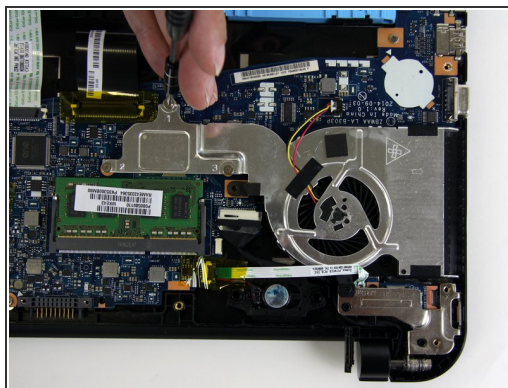
- Remove the remaining 7 mm screws on the back panel of the laptop with a Phillips #0 screwdriver.
 - Use the plastic opening tool to pry up a corner of the back panel and continue to pop the back panel off.
- i** Expect to hear popping as you pull the back panel off.

Step 5



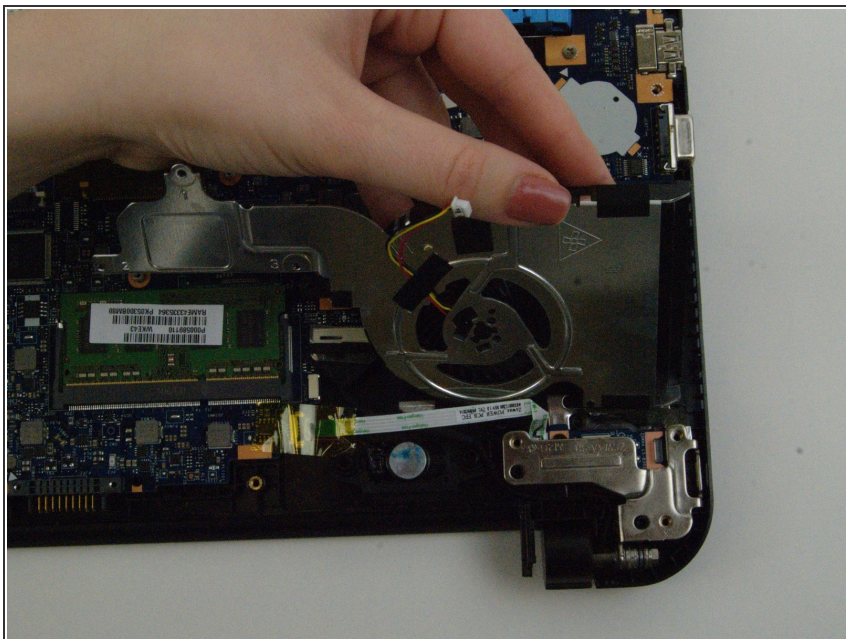
- Disconnect the fan wire from the motherboard.

Step 6



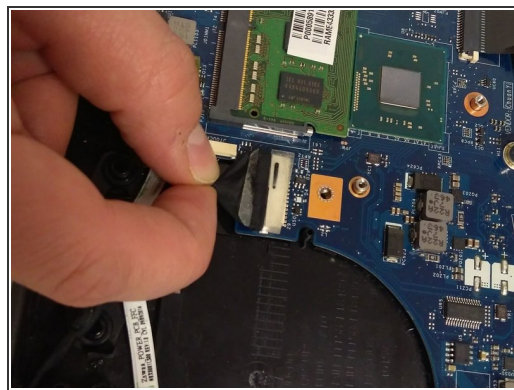
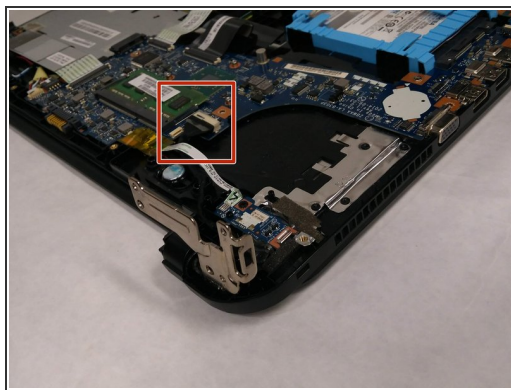
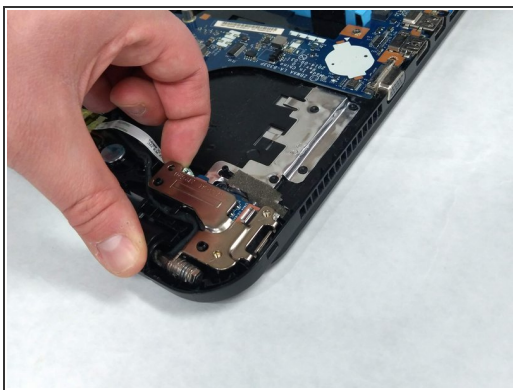
- Remove the three 3 mm screws with a Phillips #00 screwdriver.
- Remove the 5 mm screw with a Phillips #0 screwdriver.

Step 7



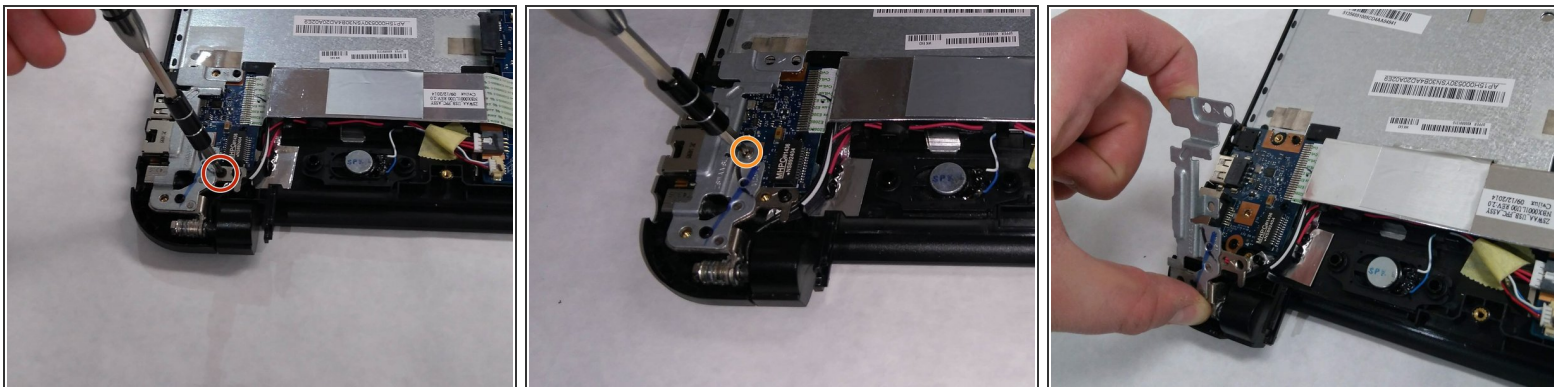
- You can now lift the fan out of the laptop.

Step 8 — Screen Bezel



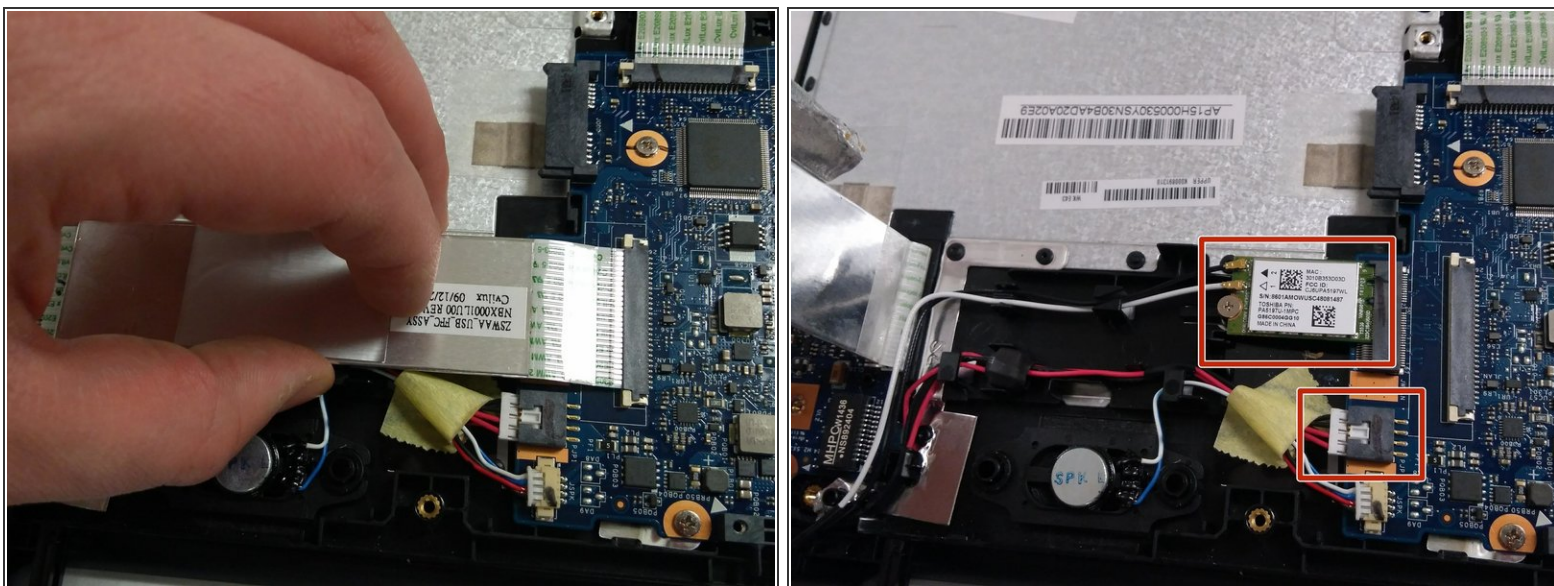
- After the fan has been removed, lift the hinge so as to get access to the parts below it.
- Remove the the black colored cable that is now exposed.

Step 9



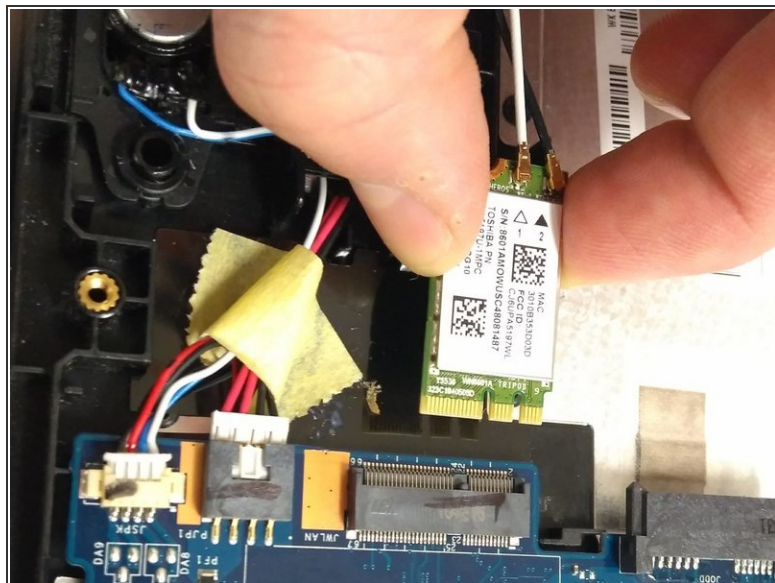
- Remove the 7 mm Phillips #0 screw on the other hinge.
- Remove the 3.1 mm Phillips #0 screw on the the same hinge.
- Lift the hinge up and towards you.

Step 10



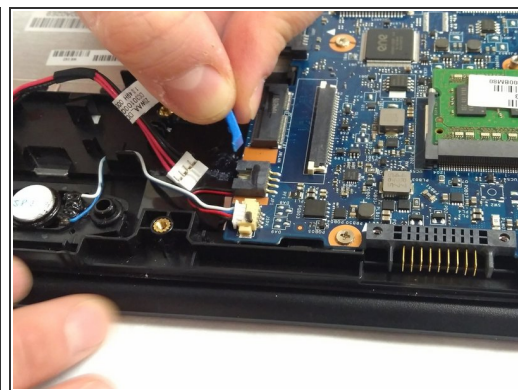
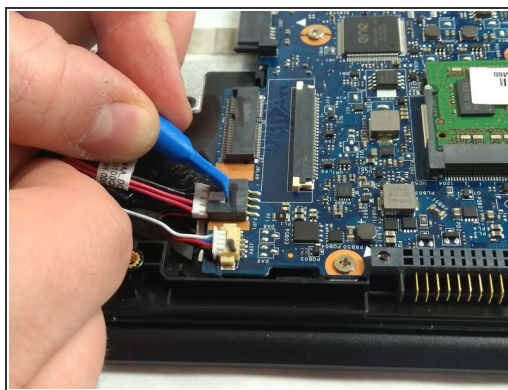
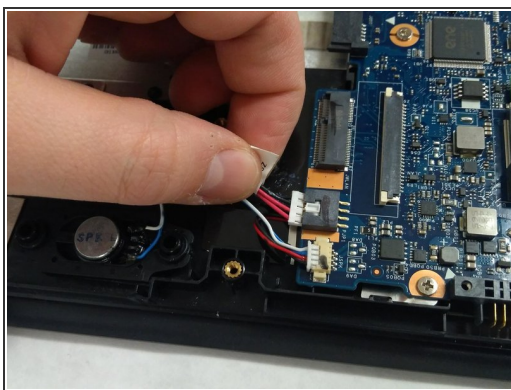
- Pull out the wide cable to reveal the components underneath.

Step 11



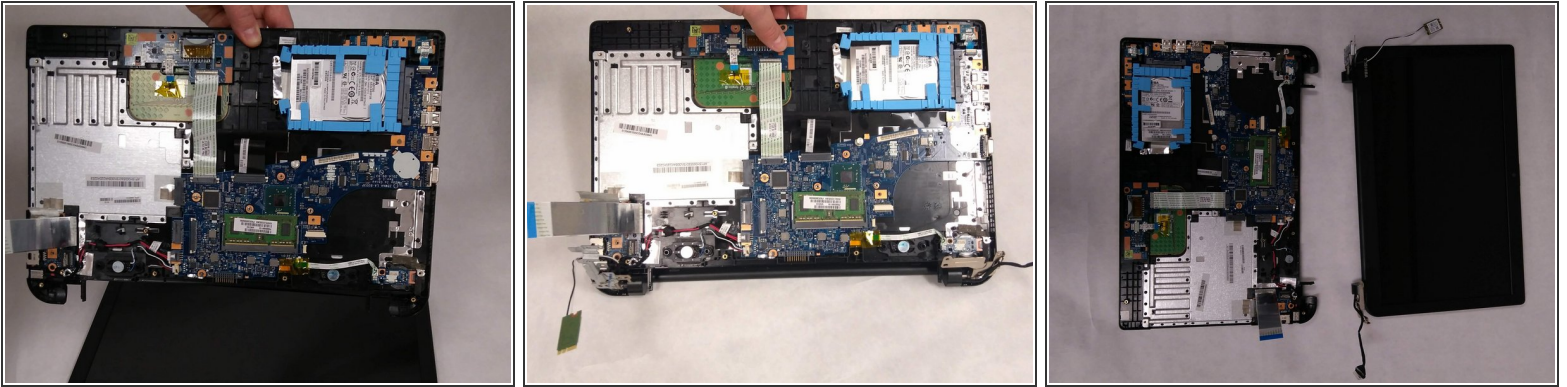
- Remove the 3.1 mm Phillips #0 screw holding the chip in place.
- Pull out the chip.

Step 12



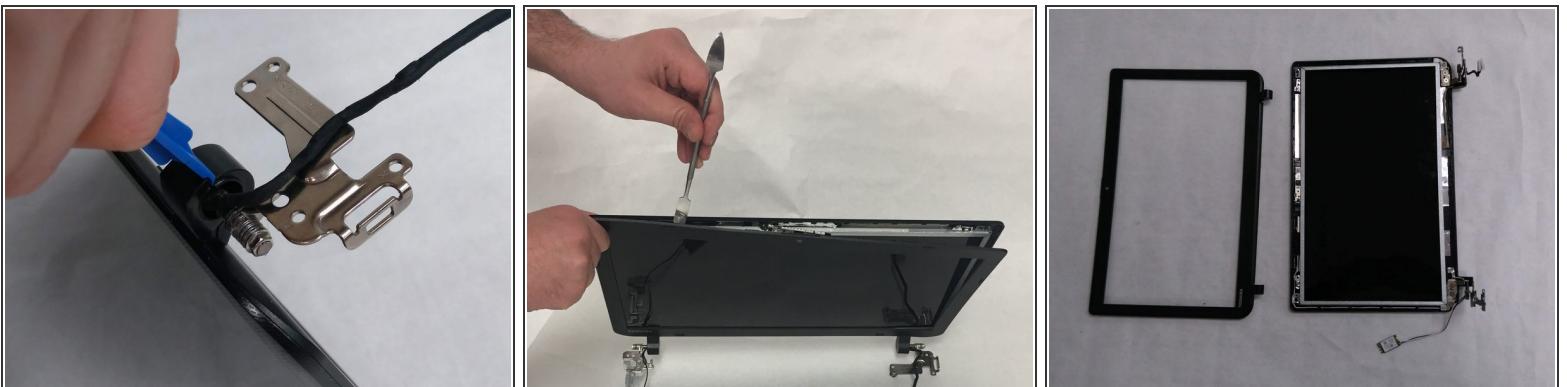
- Hold the cable that is to be removed.
- Use an iFixit opening tool to push down on the white protrusion of cable connector.
- Now you can pull out the cable.

Step 13



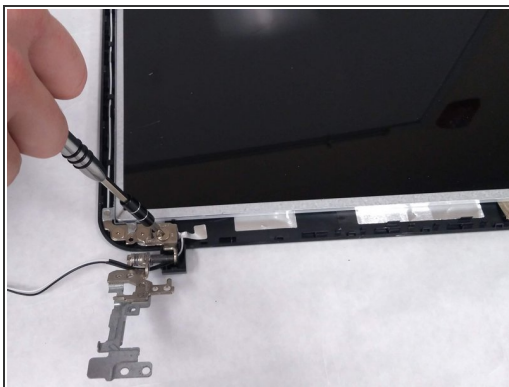
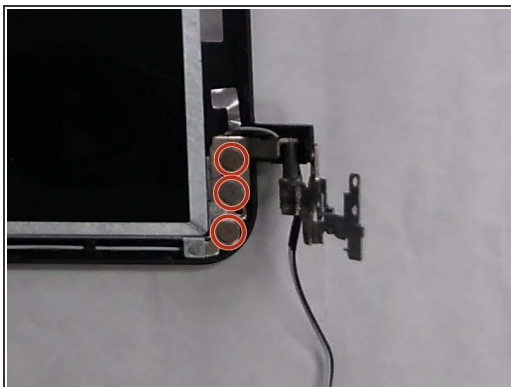
- Pivot and lift up the monitor and separate it from the base of the laptop.

Step 14



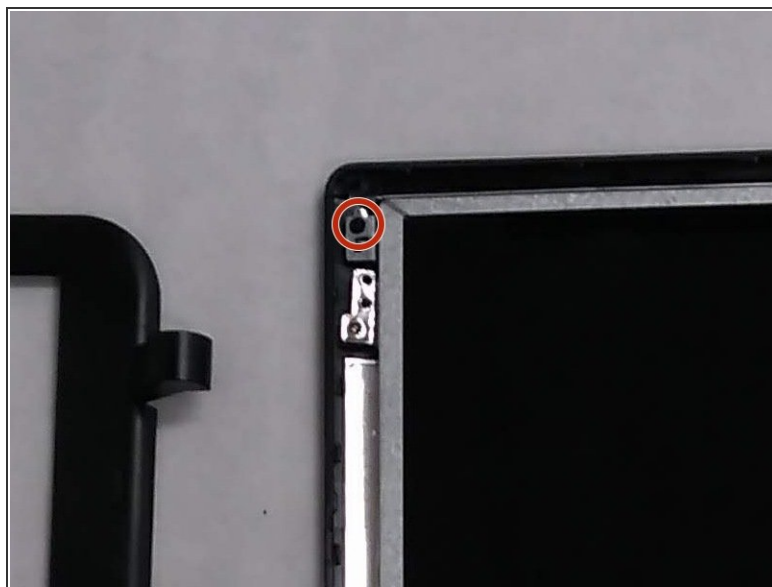
- Use an iFixit opening tool to separate the two halves of the bezel starting at both the plastic hinges.
 - Use the metal spudger to separate the rest of the bezel.
- ⚠ Be careful not to scratch the screen with the metal spudger.
- ⓘ You may hear some sounds as the clips on the bezel disconnect from the back cover. This is normal.

Step 15 — Webcam



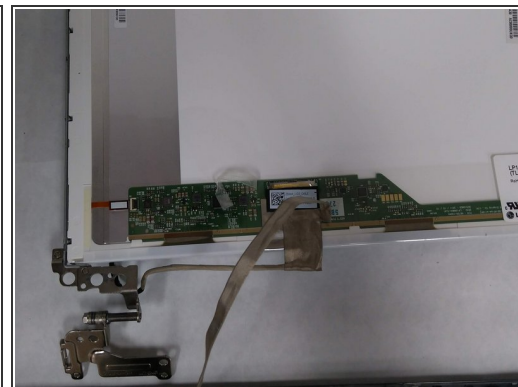
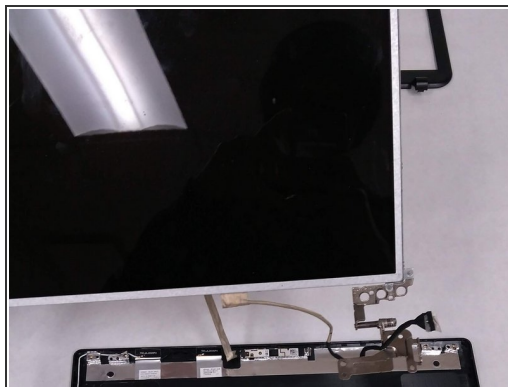
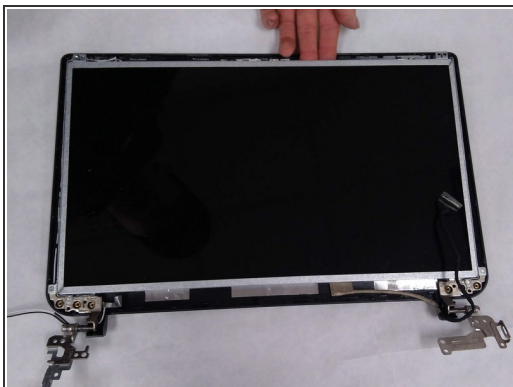
- Remove the three 4.1 mm Phillips #0 screws attaching each hinge to the screen.

Step 16



- Remove the two 3.1 mm Phillips #0 screws at the top of the screen.

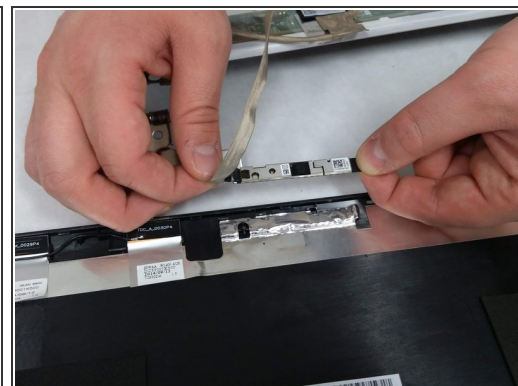
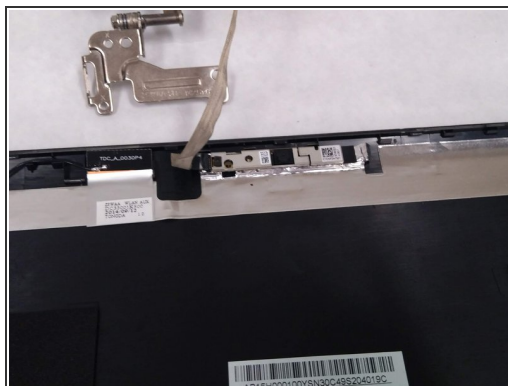
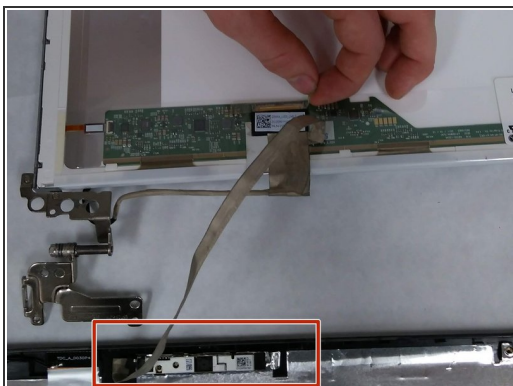
Step 17



- Pull up on and turn over the screen to expose the wire connecting the webcam to the screen.

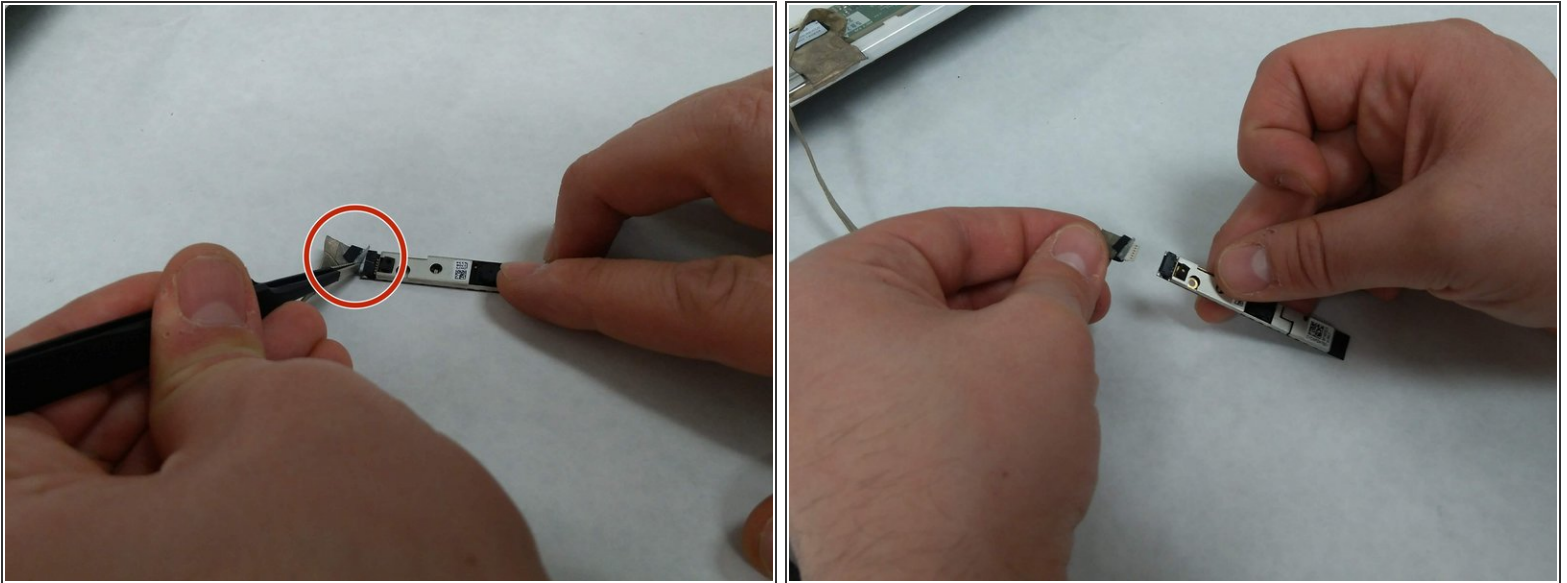
⚠ Be careful not to pull up on the screen too far and damage the wire.

Step 18



- Once the screen has been detached and turned over, remove the webcam from its place on the bezel.

Step 19



- Carefully, take off the tape connecting the webcam to the circuit board using a set of tweezers.
- Once the tape has been removed, you can disconnect the webcam from the wire completely.

To reassemble your device, follow these instructions in reverse order.