



Toshiba Satellite C55-C5240 Screen Replacement

This guide shows you how to remove the screen.

Written By: Angela Rodriguez



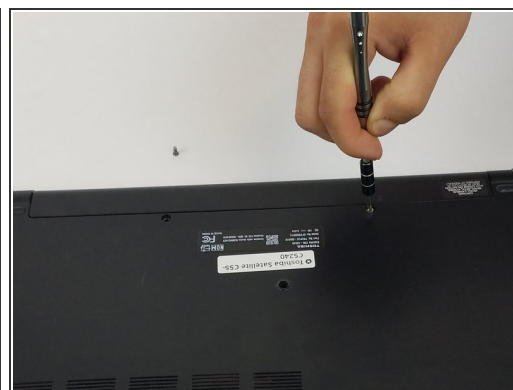
INTRODUCTION


When the screen is cracked or just does not work, it will need to be replaced. This is the guide you need to help you do that.

TOOLS:

- [iFixit Opening Tools](#) (1)
 - [Tweezers](#) (1)
 - [Phillips #1 Screwdriver](#) (1)
 - [Phillips #00 Screwdriver](#) (1)
-

Step 1 — Battery



 Make sure you turn off the laptop before starting.

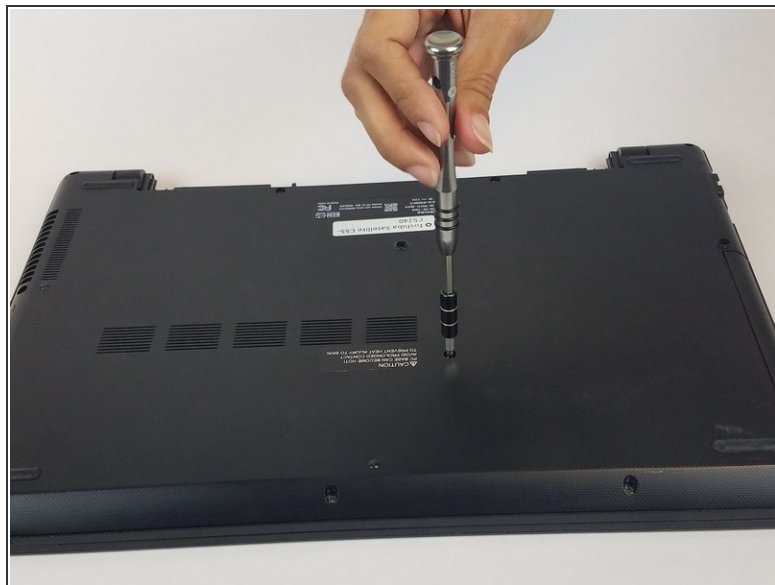
- Remove the two 6.5mm PH1 Phillips screws securing the battery.

Step 2



- Pull the battery out, keeping it flat and parallel to the laptop so that it slides out easily.

Step 3 — Back cover



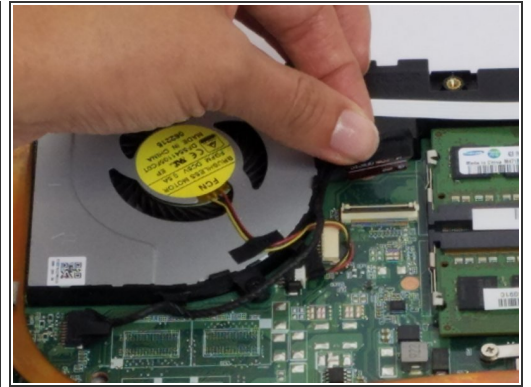
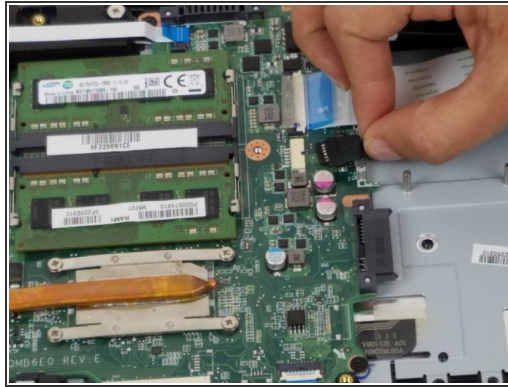
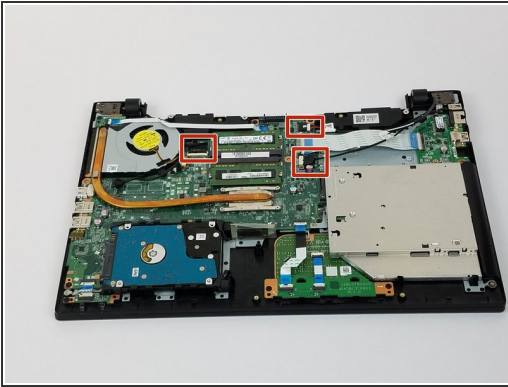
- Unscrew the ten 6.5mm PH1 Phillips head screws that hold down the back cover.

Step 4



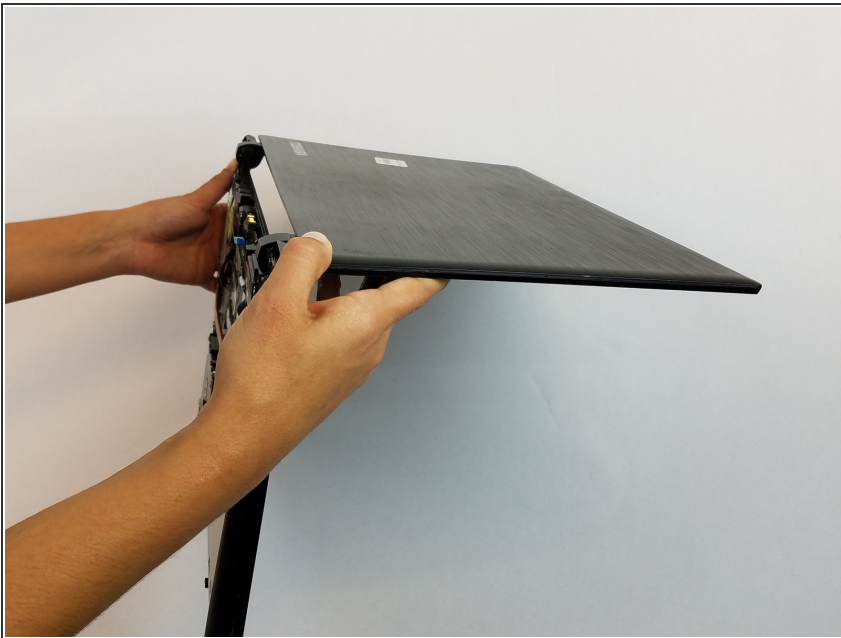
- Using the plastic opening tools, open the back cover and remove it from the laptop.
- ⓘ It is recommended that you start from a corner and run the tool along the edge of the cover.
- ⚠ Be careful not to bend or crack the cover.

Step 5 — Screen



- Carefully disconnect these three cables.

Step 6



- Open the laptop at a right angle to make the later removal much easier.

Step 7



- Unscrew the four PH1 Phillips head screws on the hinges.

Step 8



- Separate the screen from the rest of the laptop.
- ⓘ Make sure the cables do not catch on the bottom piece.

Step 9



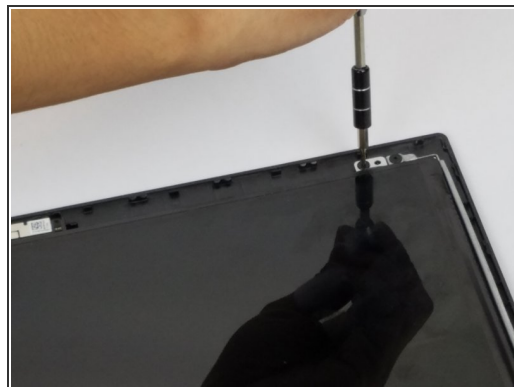
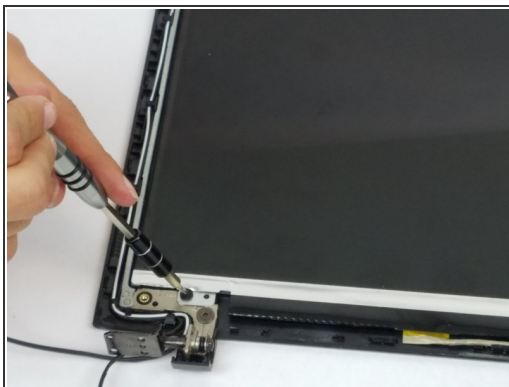
- Using a pair of tweezers, remove the two stickers on the bottom of the screen.
- Unscrew the two screws underneath.

Step 10



- Stick the plastic opening tool underneath the screen bezel and run it along the edge of the screen.
- ⓘ Loosen each hinge separately, it would be more difficult otherwise.

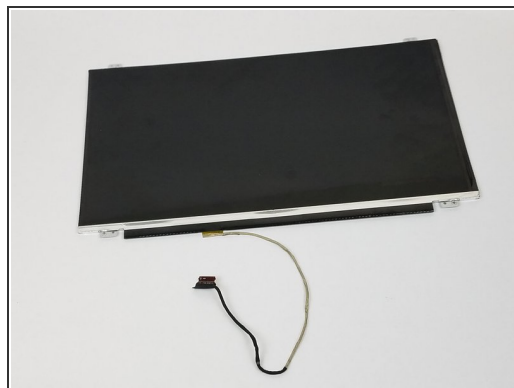
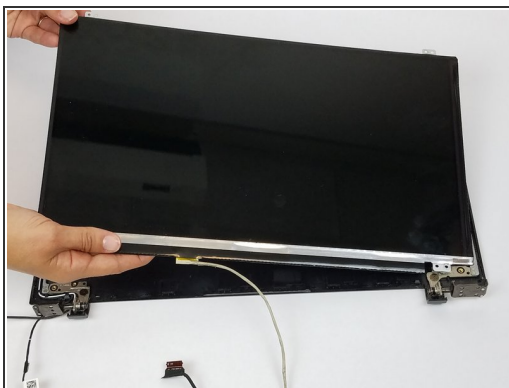
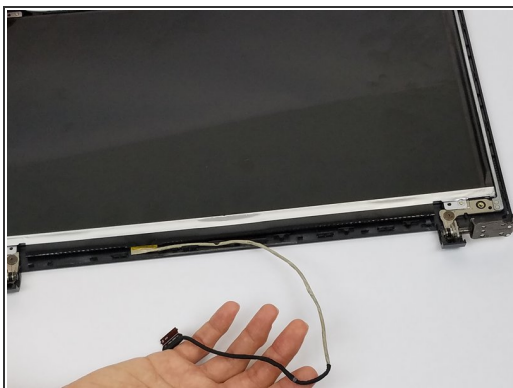
Step 11



- Unscrew the four inner screws around the screen.

- ⓘ Leave the two outer screws on the top alone.

Step 12



- ⓘ Mind the cable on the bottom of the screen.

- Simply lift the screen out.

To reassemble your device, follow these instructions in reverse order.