



Toshiba Satellite C55D-A5108 Hard Drive Replacement

How to replace the Toshiba Satellite C55D-A5108 hard drive.

Written By: Geoffrey Souza



INTRODUCTION

This guide may be required if the Toshiba Satellite C55D-A5108 is failing to boot into Windows or if you need more space to store files. Before replacing the drive please make sure you have a drive to put into the computer and that it is compatible with the components within the laptop (can be found on the manufacture's website.)



TOOLS:

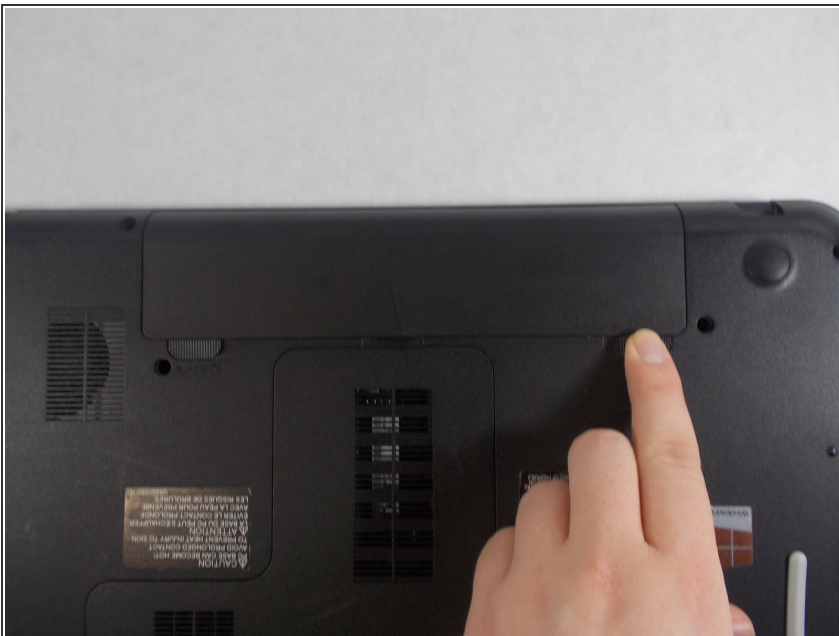
- [Phillips #0 Screwdriver](#) (1)
-

Step 1 — Battery



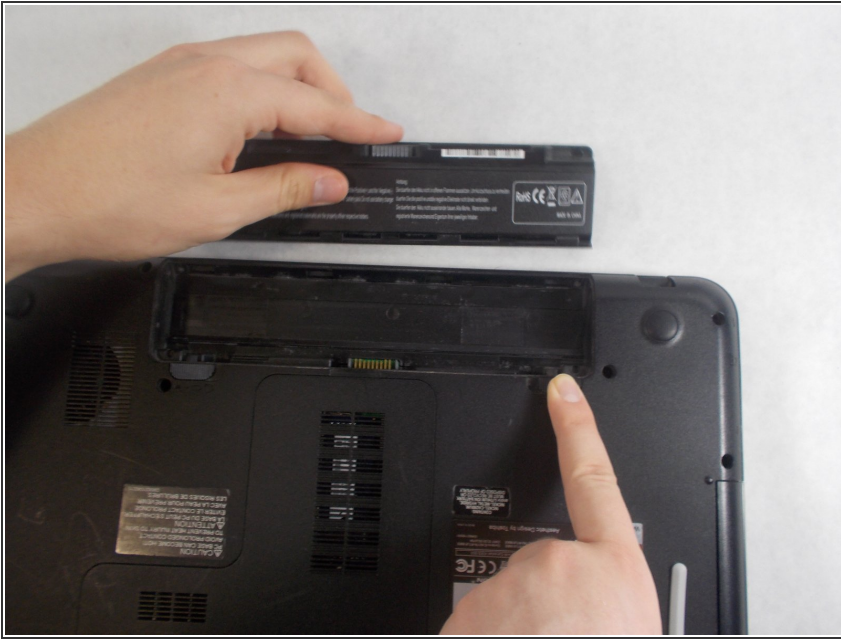
- Flip over the device so that the model stickers are facing up.

Step 2



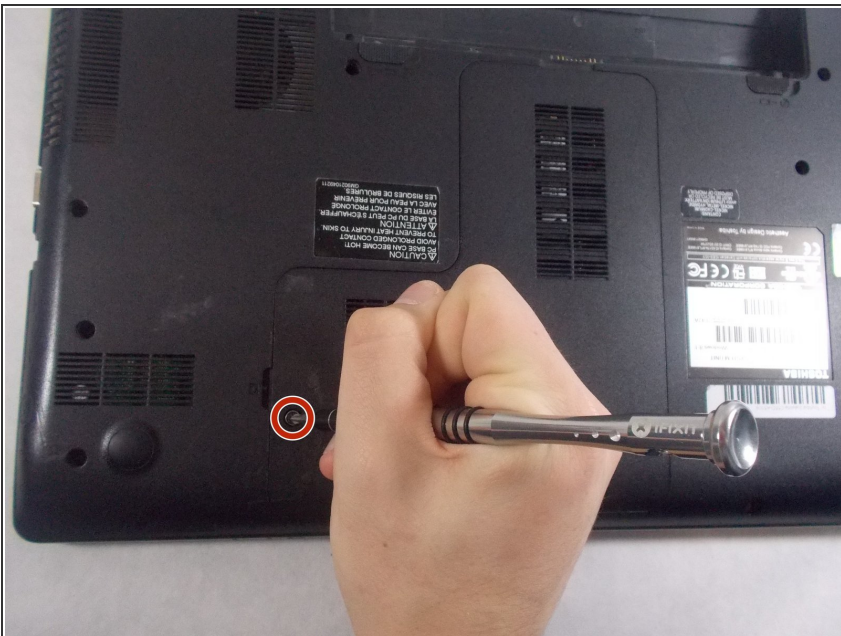
- Move the right notch to the unlock position by sliding it to the right.

Step 3



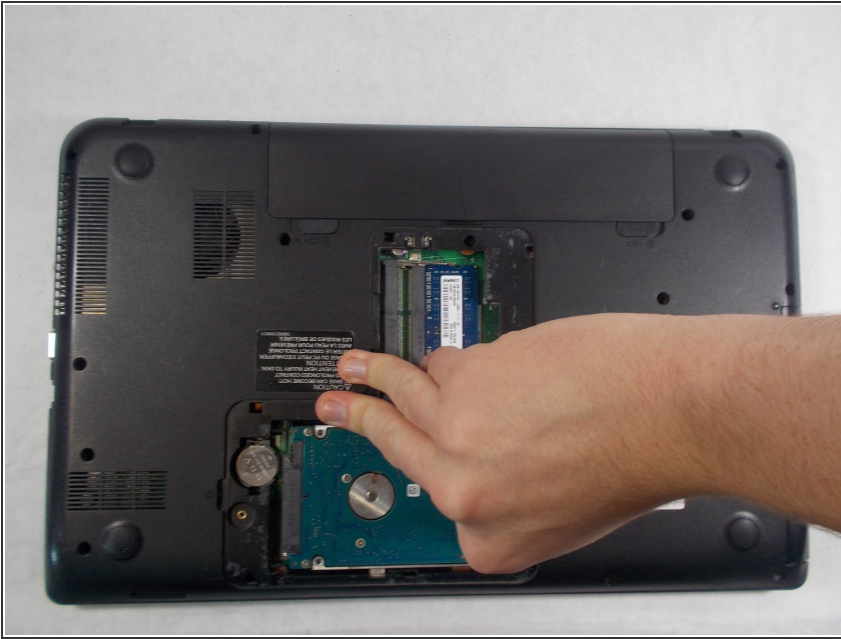
- Hold the left notch in an unlocked position with one hand and use the other hand to slide the battery out.

Step 4 — Hard Drive



- Remove the Phillips #0 screw from the memory cover.

Step 5



- Grasp the side of the hard drive opposite the circular battery, and carefully pull out the drive by moving it away from the circular battery.

To reassemble your device, follow these instructions in reverse order.