



Toshiba Satellite C55D-A5170 RAM Replacement

How to replace and upgrade RAM on a Toshiba C55D-A5170.

Written By: Marshall WahlstromHelgren



INTRODUCTION

How to remove, replace and upgrade RAM on a Toshiba Satellite C55D-A5170. You can upgrade up to 16 GB for this model computer.

TOOLS:

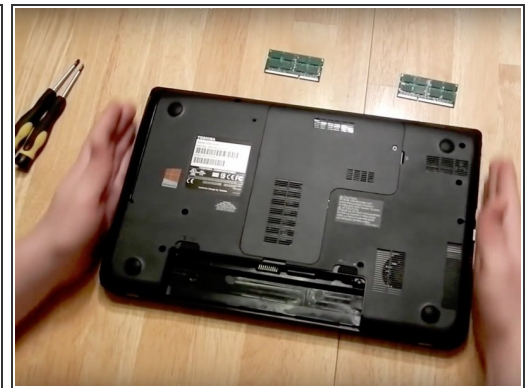
- [Phillips #0 Screwdriver](#) (1)
-

Step 1 — Turning the Computer off and Disconnecting the AC Power

- Step 1: First make sure the Computer is off and the AC Adapter is disconnected. You will then flip the computer over. Go to Step 2 for more.



Step 2 — Removing the Battery



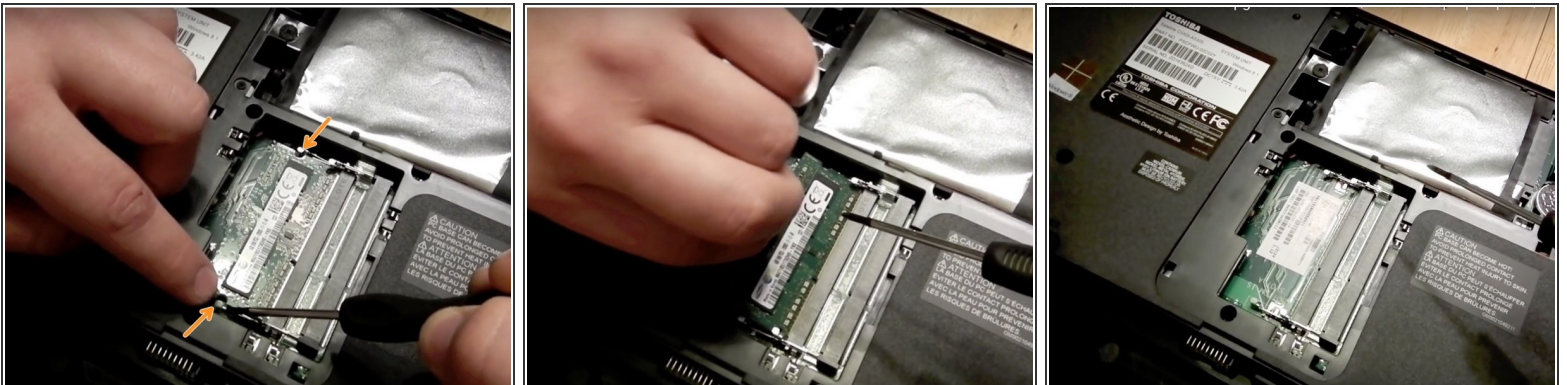
- Step 2: Now locate the Tabs located on the Right and Left sides of the battery.
- The Right tab will be in locked position on the bottom casing you will simply push that tab to the unlocked position. The Left Tab you must hold in place with your thumb then the Battery can be removed.
- If you see the third picture, This is what the laptop looks like when the battery is removed. Onto Step 3.

Step 3 — Removing the Hard Drive and RAM Plastic Cover



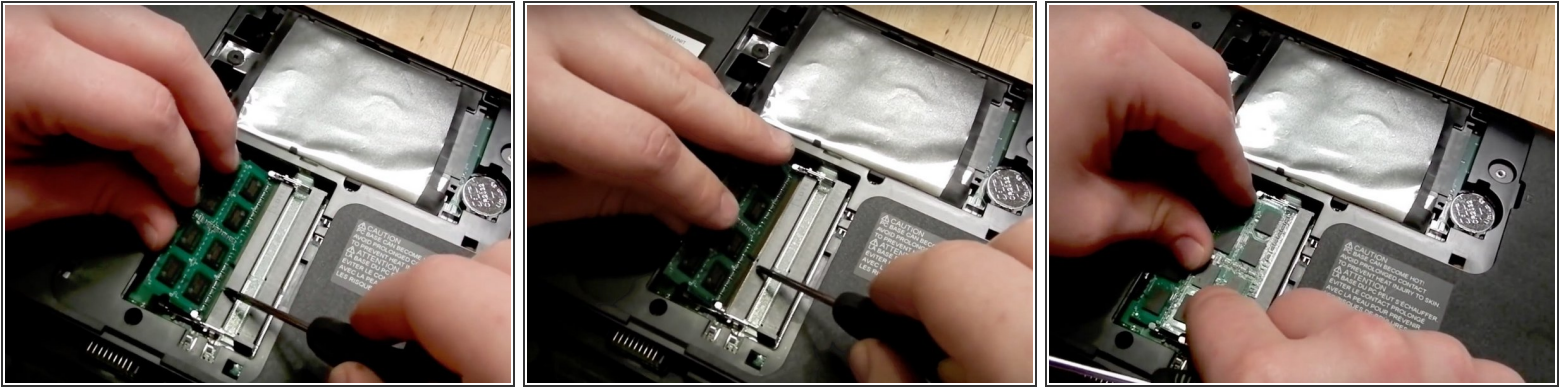
- Step 3: You will then locate the screw in the top right corner, you will then pull up gently on the opening as indicated by the arrows in the pictures.

Step 4 — Removing the old RAM



- Step 4: Using your thumbs release the tabs on each side of the chip by simultaneously pushing each tab away from the RAM. These tabs lock the chip in place and releasing them will cause the chip to "pop" up.
- Once the Ram pops up you then remove it.

Step 5 — Installing the New RAM (Finish)



- Step 5: Insert the new RAM at an angle, and make sure you line the pins of the Chip up with the Pins of the Slot and push it gently but firmly as far in as it will go. Then gently push it down until the tabs lock it in place.
- Note from the first Bullet point: If you are installing two RAM Chips then you will repeat this process again after you install the first chip.
- Then put the plastic cover back on and screw the screw in place. Replace Battery back in its place. Then reconnect the power.
- To make sure your computer is reading all the RAM. Do the following: For Windows XP, Vista and 7 users: From the Desktop or Start Menu, right-click on Computer and select Properties. In the System Properties window, the system will list "Installed memory (RAM)" with the total amount detected.
- For Windows 8 & 8.1 users you do the following: **Step 1:** Right Click My Computer, then Click on Properties. **Step 2:** Click Installed Memory (RAM)
- For Windows 10 users: Open System Properties. (Right-click the Start menu, select System and then click Change Settings, or use the Control Panel.) 2. In the System Properties dialog box, on the Advanced tab, click the Settings button in the Performance section.

To reassemble your device, follow these instructions in reverse order.